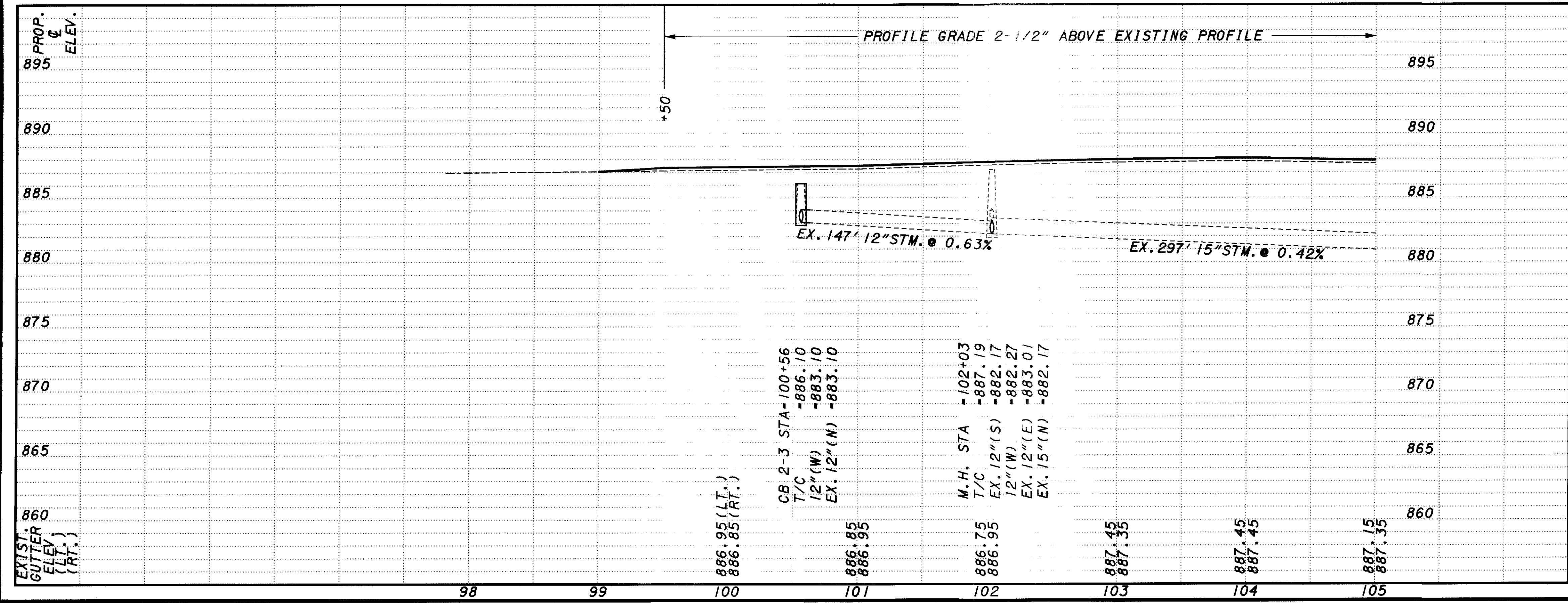
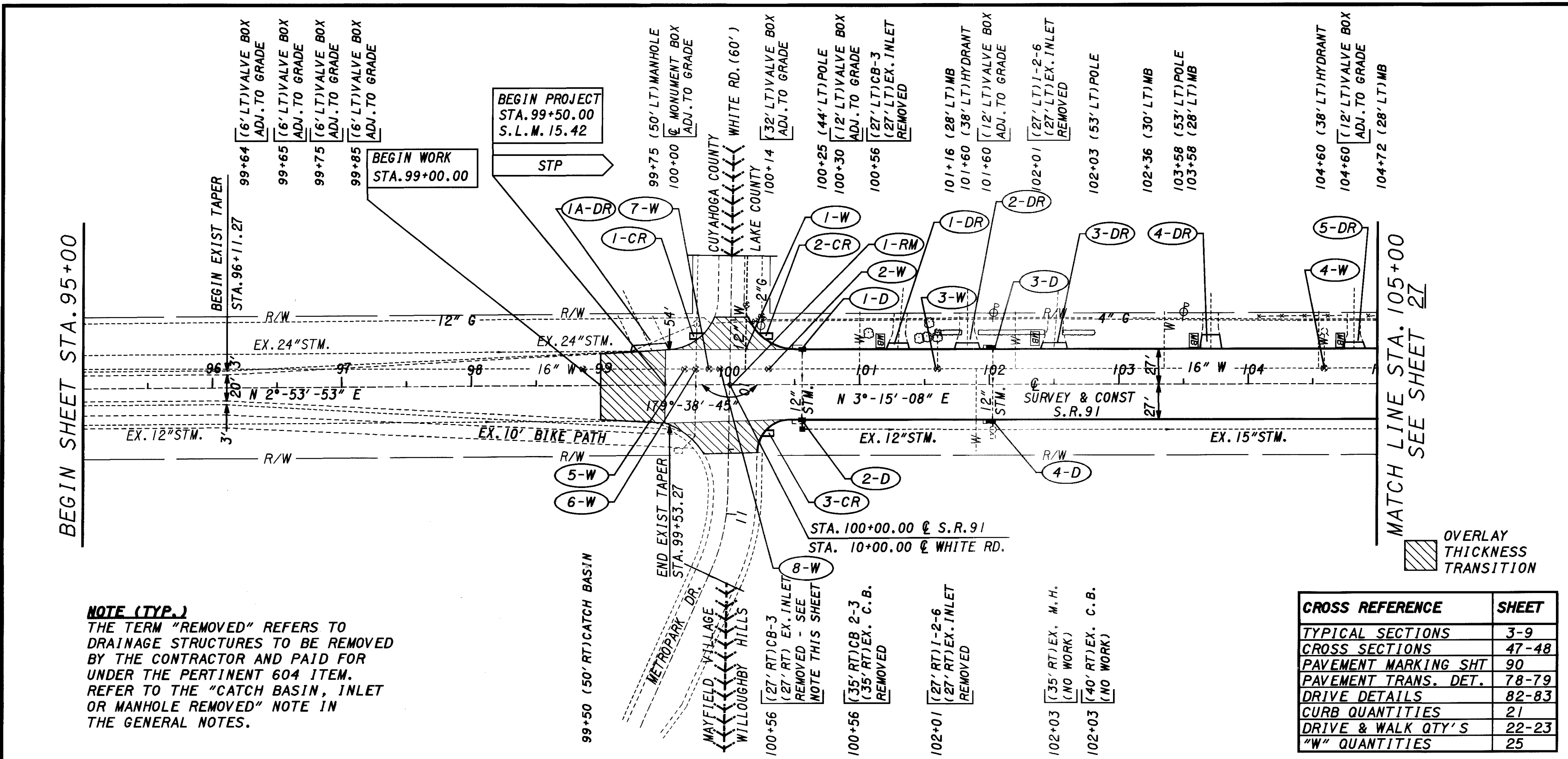


PLOTTED BY: fkonopka  
 PLOTTED FROM: /1/pd/bkruse/pid09864/09864qpa.dgn  
 09864CPA.DGN  
 PLOT SUBMITTED: 09-OCT-1998 09:12



| REF. NO.                               | STATION TO STATION | CONDUIT, TYPE |          |          |         | 603    |                     | 604               |               |
|--|--------------------|---------------|----------|----------|---------|--------|---------------------|-------------------|---------------|
|  |                    | B<br>12"      | C<br>12" | F<br>15" | F<br>6" | LN.FT. | CATCH BASIN NO. 2-3 | CATCH BASIN NO. 3 | INLET NO. 2-6 |
| 1-D                                    | 100+56 LT          | 2             |          |          |         | 20     | 1                   | 1                 |               |
| 2-D                                    | 100+56 RT          | 2             | 10       |          |         | 20     | 1                   | 1                 |               |
| 3-D                                    | 102+03 LT          | 2             |          |          |         | 10     |                     |                   | 1             |
| 4-D                                    | 102+03 RT          | 2             |          |          |         | 10     |                     |                   | 1             |
| TOTALS CARRIED TO DRAINAGE SUB-SUMMARY |                    | 8             | 18       |          |         | 60     | 1                   | 2                 | 2             |



| CROSS REFERENCE      | SHEET |
|----------------------|-------|
| TYPICAL SECTIONS     | 3-9   |
| CROSS SECTIONS       | 47-48 |
| PAVEMENT MARKING SHT | 90    |
| PAVEMENT TRANS. DET. | 78-79 |
| DRIVE DETAILS        | 82-83 |
| CURB QUANTITIES      | 21    |
| DRIVE & WALK QTY'S   | 22-23 |
| "W" QUANTITIES       | 25    |