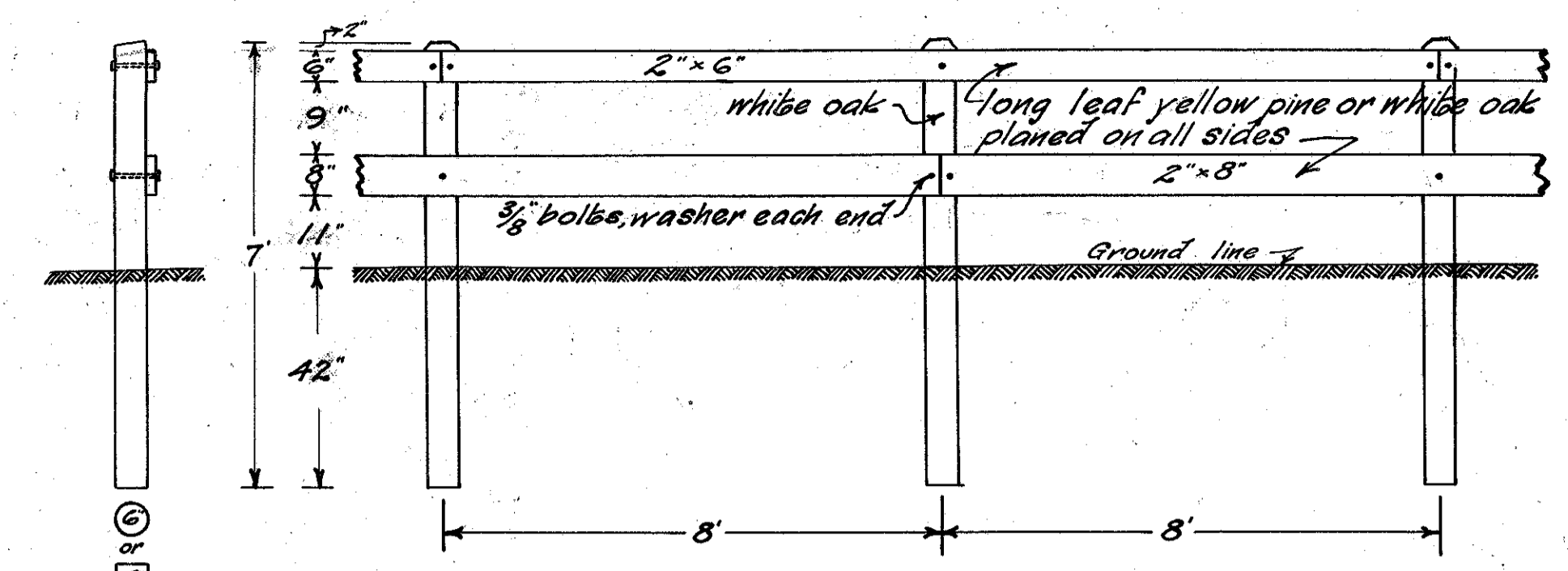
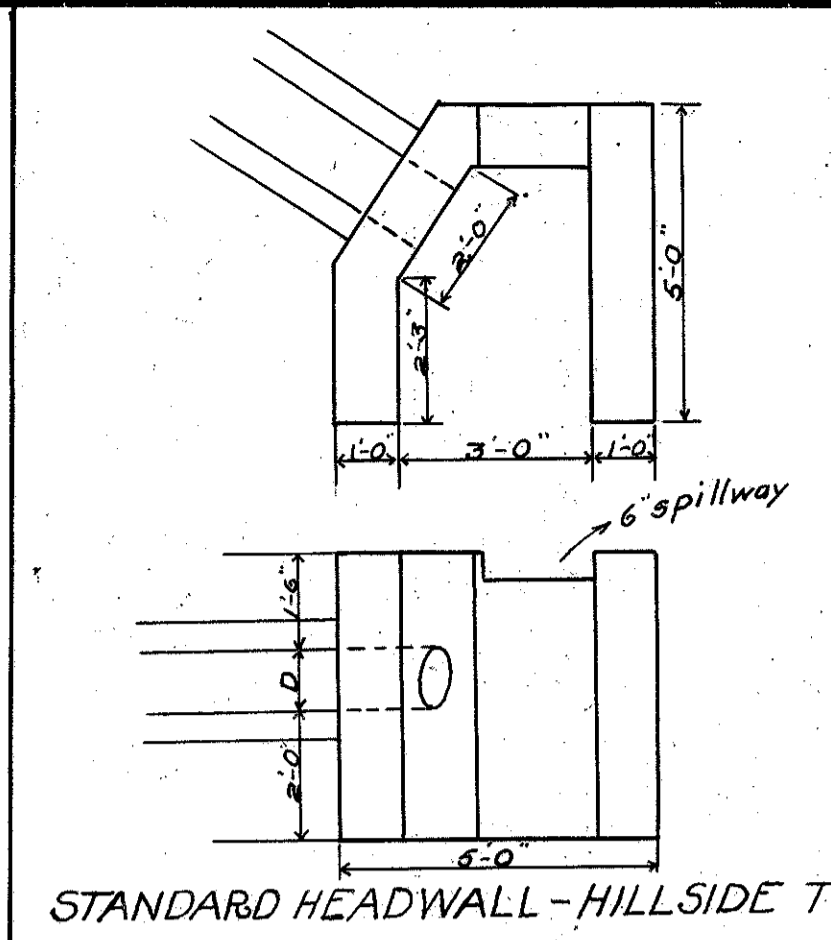


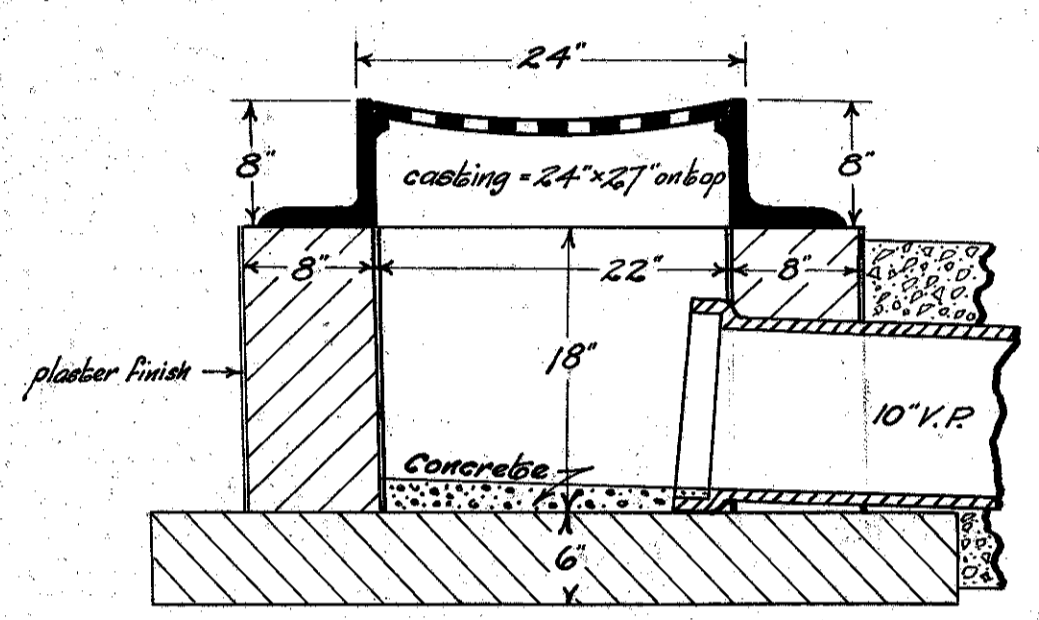
I.G.H. No. 466 SEG. D  
LAKE COUNTY



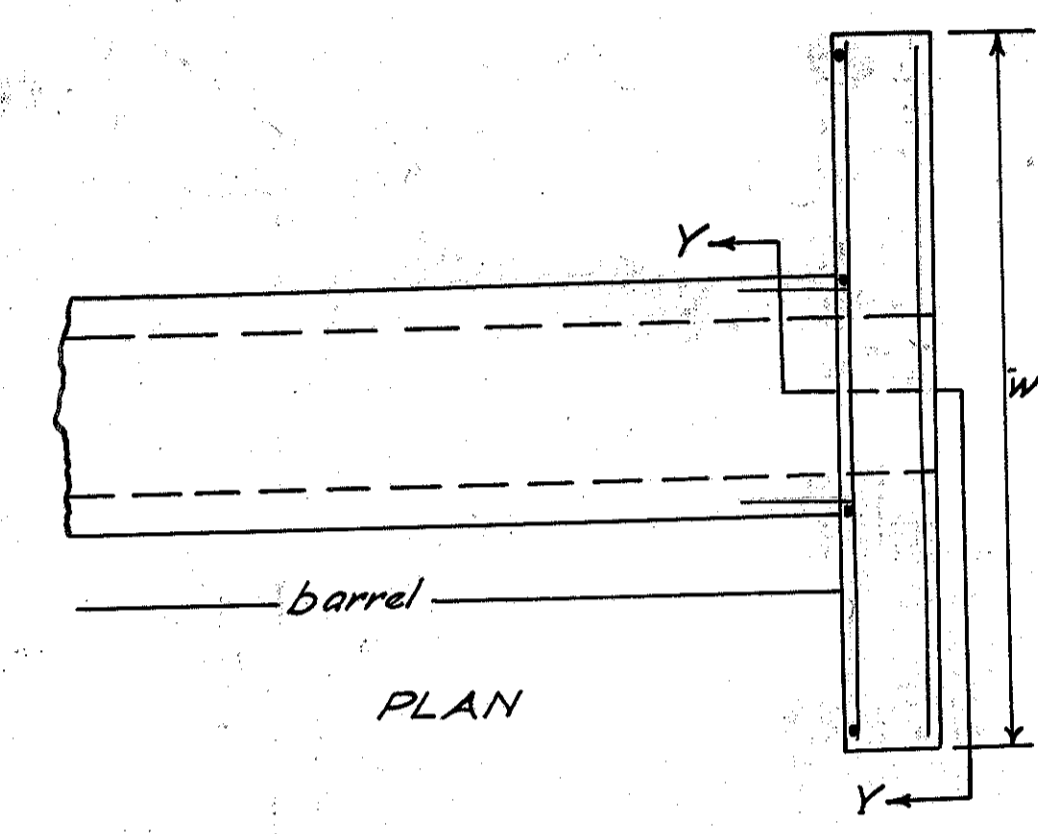
TYPE-B GUARD RAIL  
See page 9 for plan of type D rail



STANDARD HEADWALL - HILLSIDE TYPE

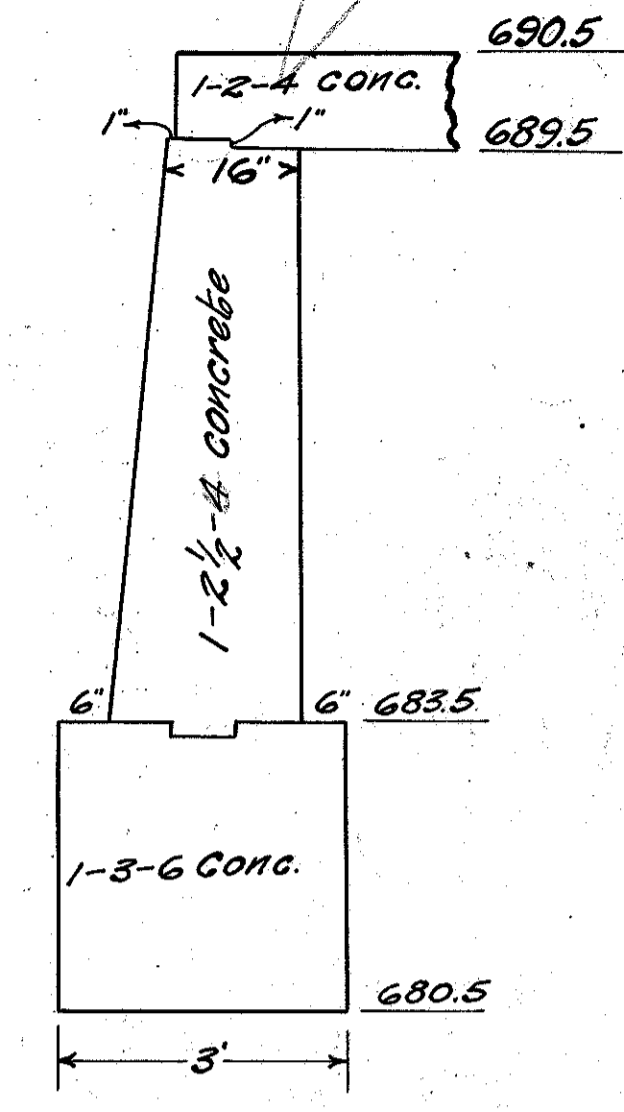


SECTION THRU INLET BASIN IN GUTTER CURB ON LEFT OF C

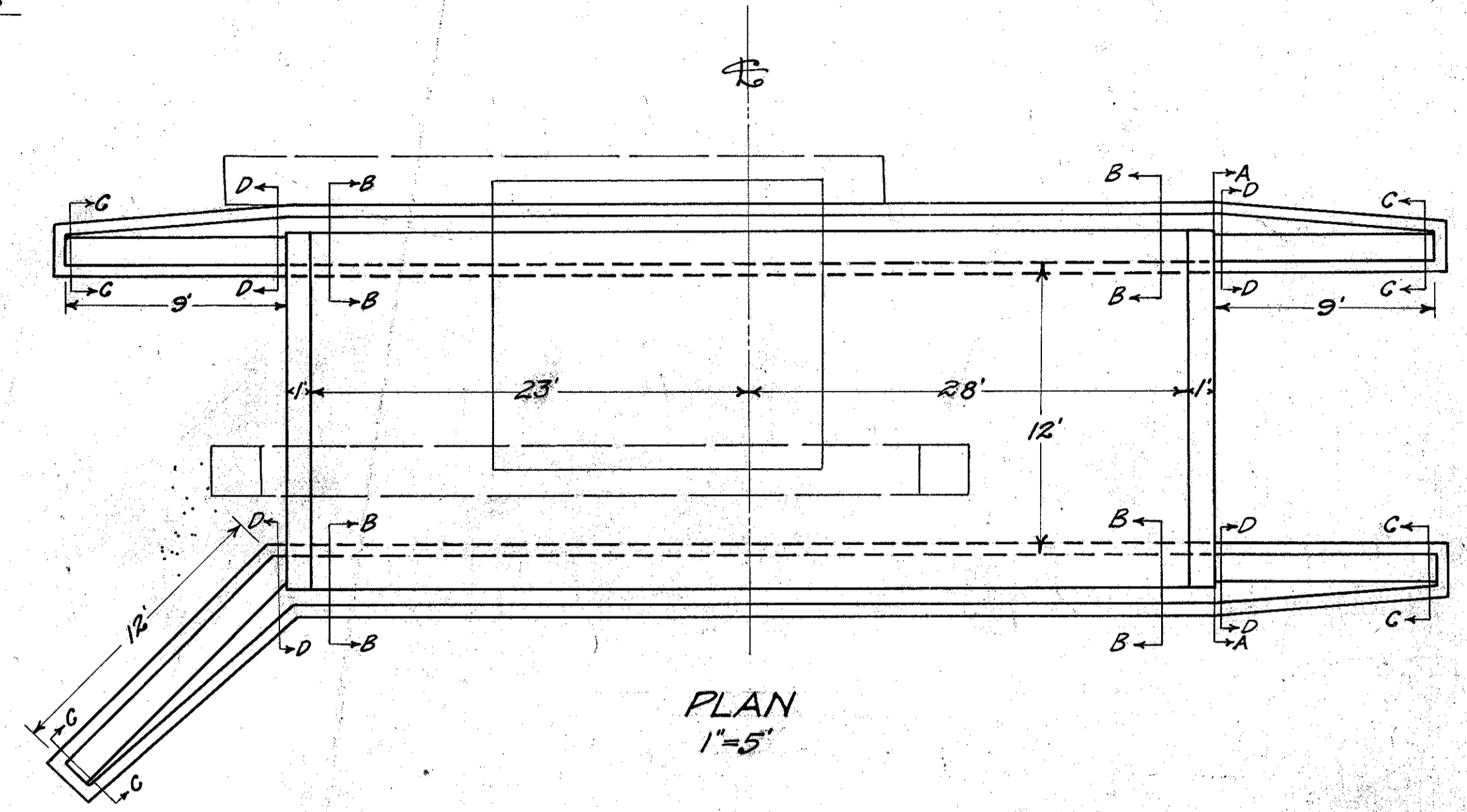


PLAN

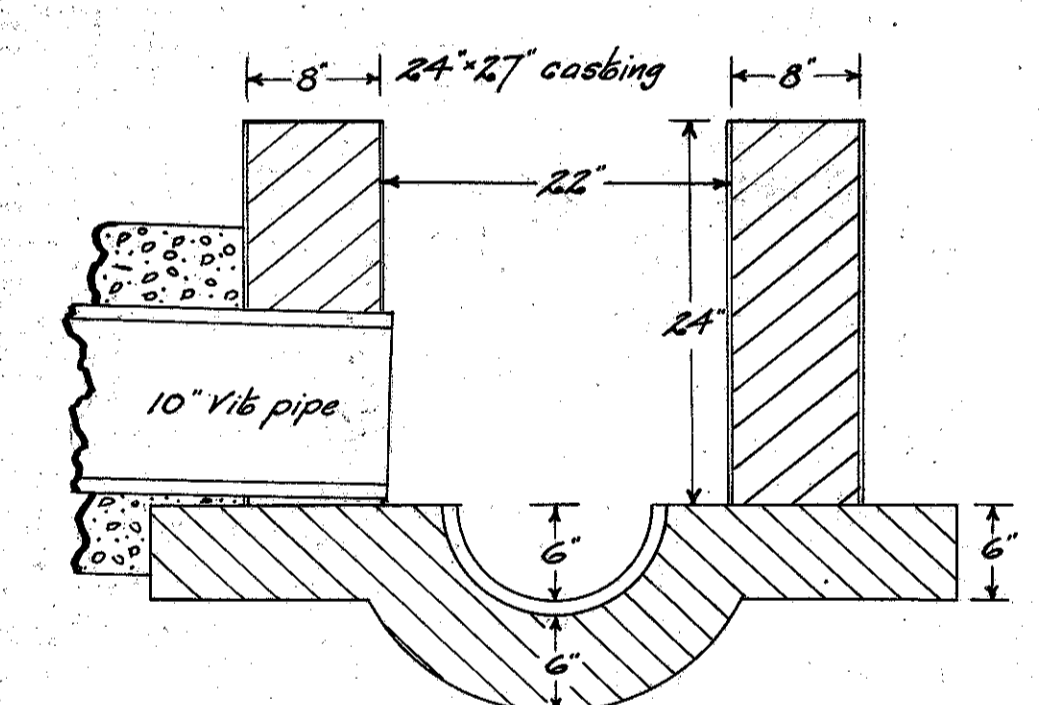
VIEW Y-Y



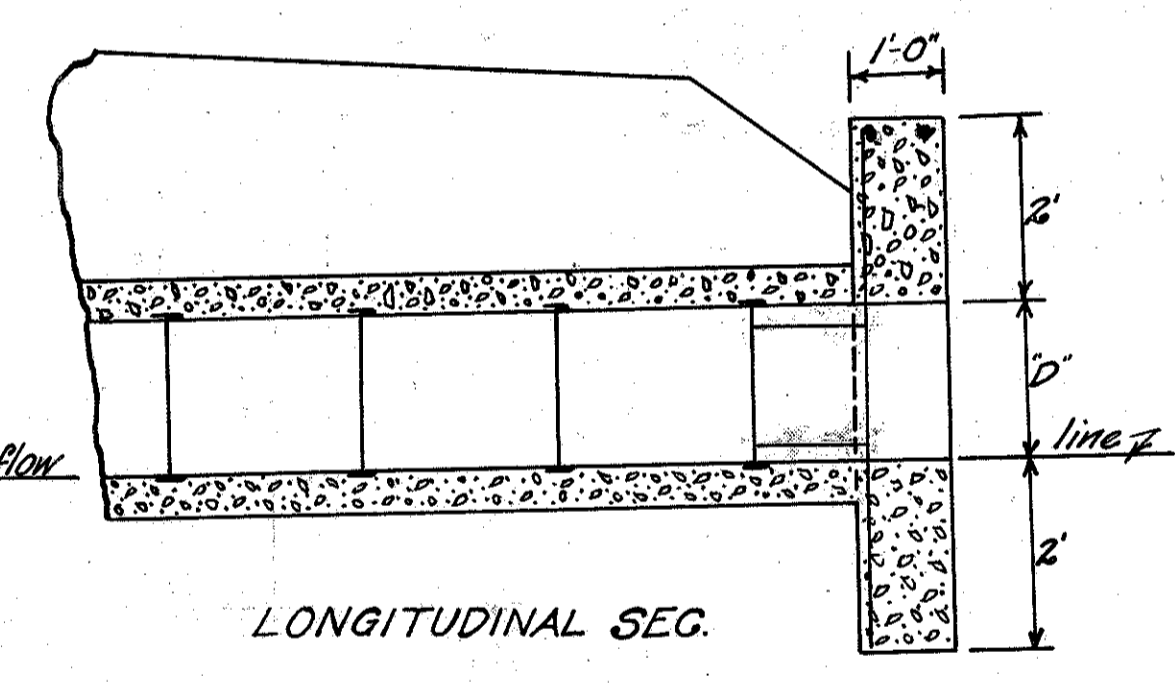
SECTION B-B  
1"=2'



PLAN  
1"=5'



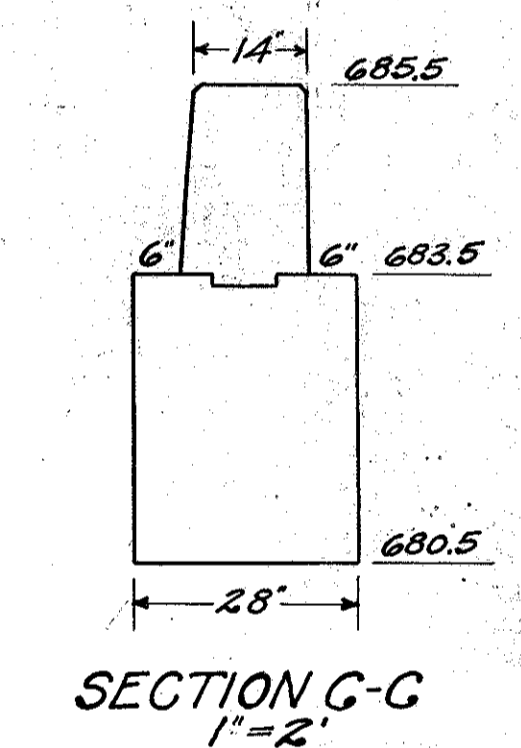
SECTION THRU INLET BASIN IN GUTTER CURB ON RIGHT OF C



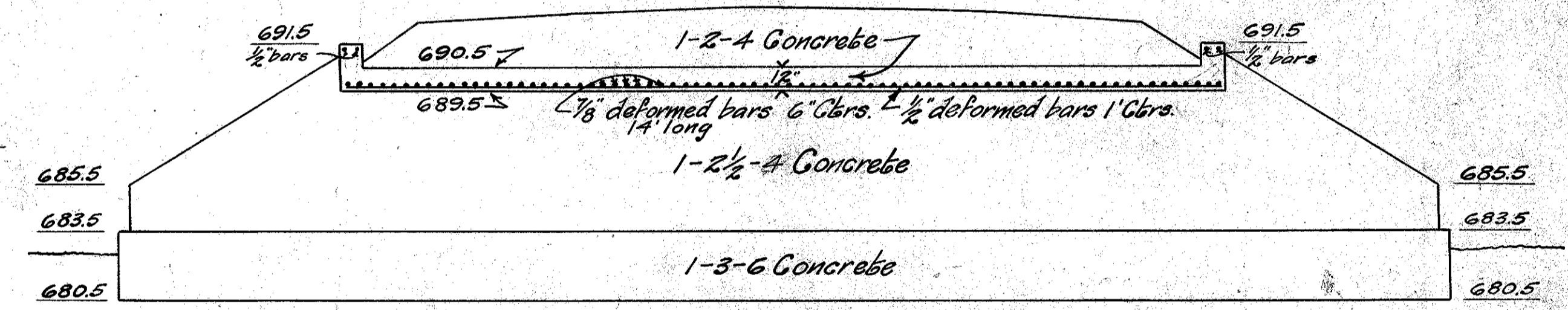
LONGITUDINAL SEC.

STANDARD ENCASED VIT. PIPE CULVERT

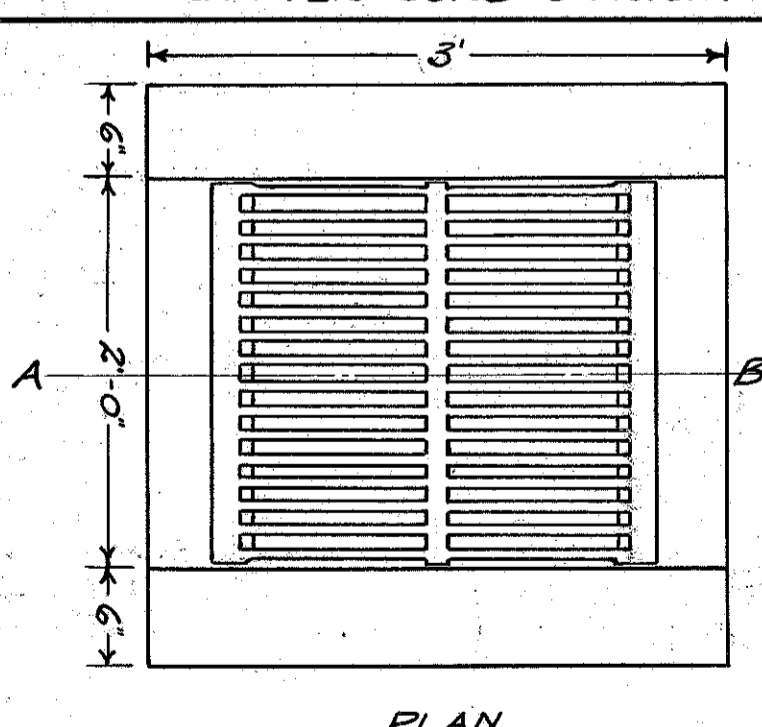
D" diam. pipe	W" width headwall	CU YDS. CONC. 2 1/2" thick	CU YDS. CONC. 1 1/2" thick
12"	5'-6"	2.0	.108
15"	6'-3"	2.3	.130
18"	7'-0"	2.7	.154
20"	7'-6"	3.0	.172
22"	8'-0"	3.2	.192
24"	8'-6"	3.5	.208
27"	9'-6"	4.0	.239
30"	10'-6"	4.6	.268
33"	11'-6"	5.2	.291
36"	12'-6"	5.8	.328



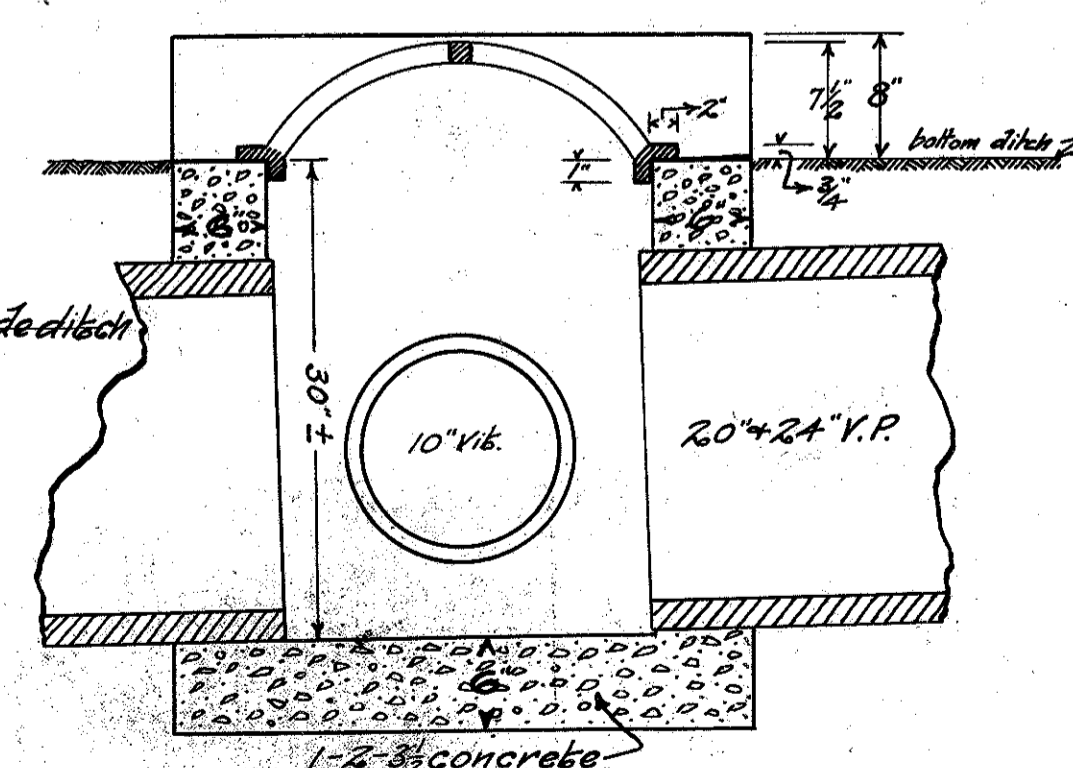
SECTION G-G  
1"=2'



ELEVATION OF NORTH WALL SHOWING SLAB & REINFORCING  
1"=5'

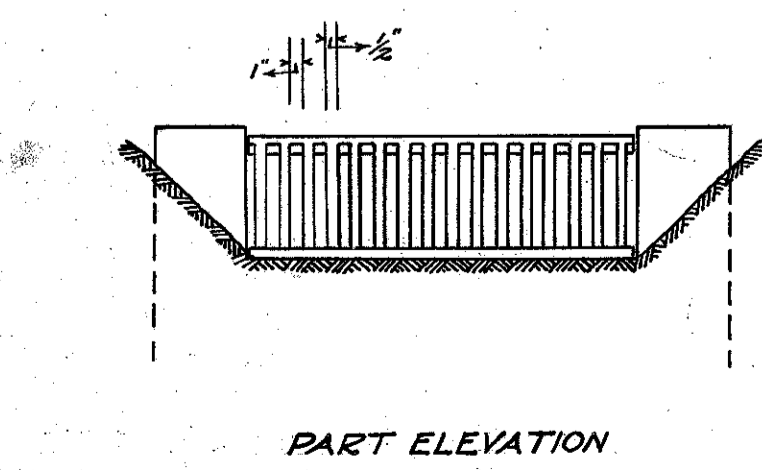


PLAN

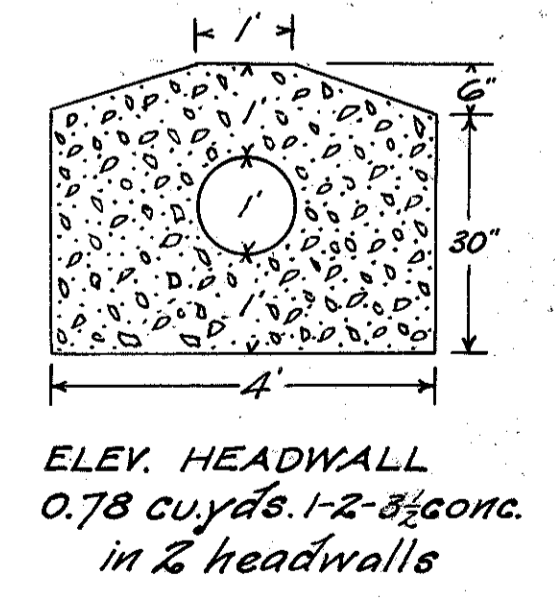


SECTION A-B

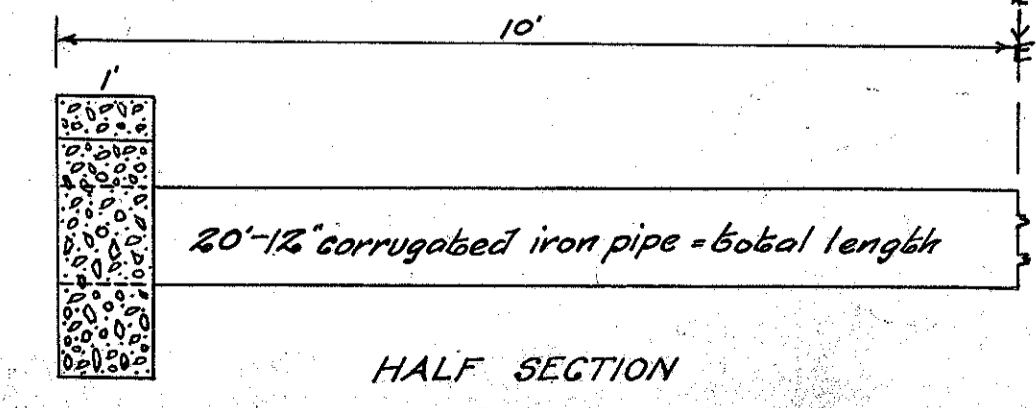
INLET BASIN IN DITCH LINE



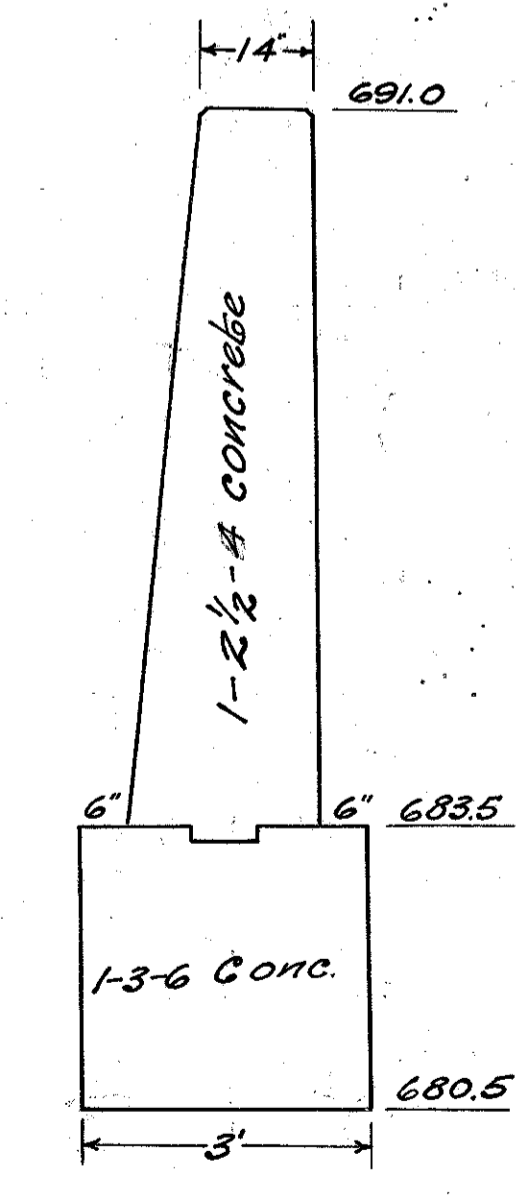
PART ELEVATION



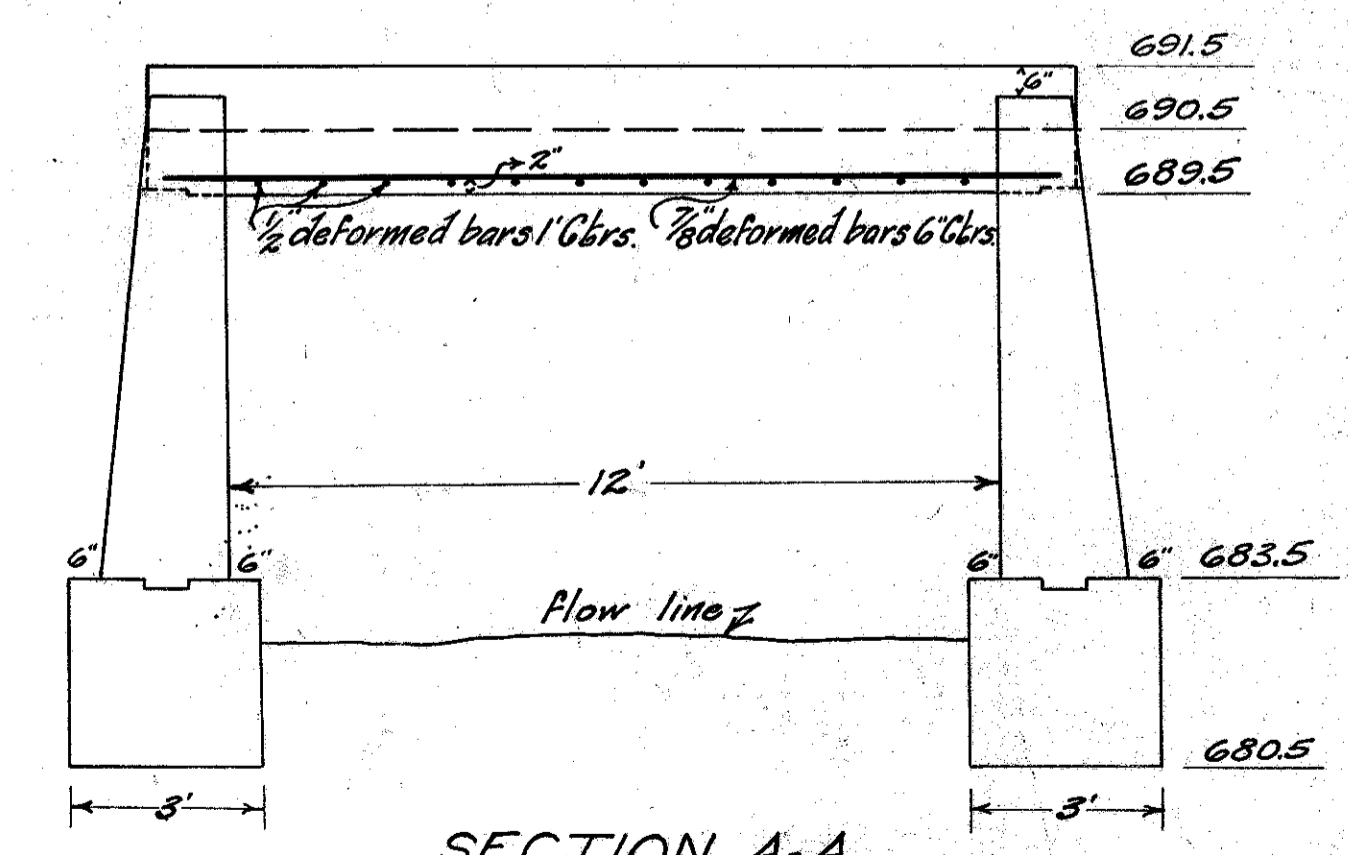
ELEV. HEADWALL  
0.78 cu yds. 1-2-3/4 conc. in 2 headwalls



PIPE CULVERT FOR DRIVEWAYS



SECTION D-D  
1"=2'



SECTION A-A  
1"=3'

QUANTITIES  
Remove old bridge & both walls  
30 cu yds. old stone to be removed  
131 cu yds. excavation  
47.4 cu yds. 1-3-5 concrete  
49.7 cu yds. 1-2-1/2 #4 concrete  
295 cu yds. 1-2-3/4 concrete  
3833 lbs. steel

CULVERT AT STA. 112+55

Note: Measurements & Quantities O.K.  
Length does not scale due to relocation & grade change