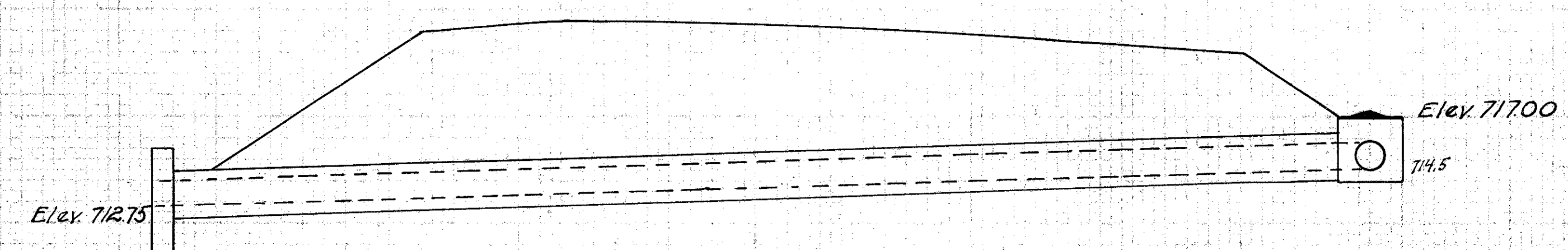


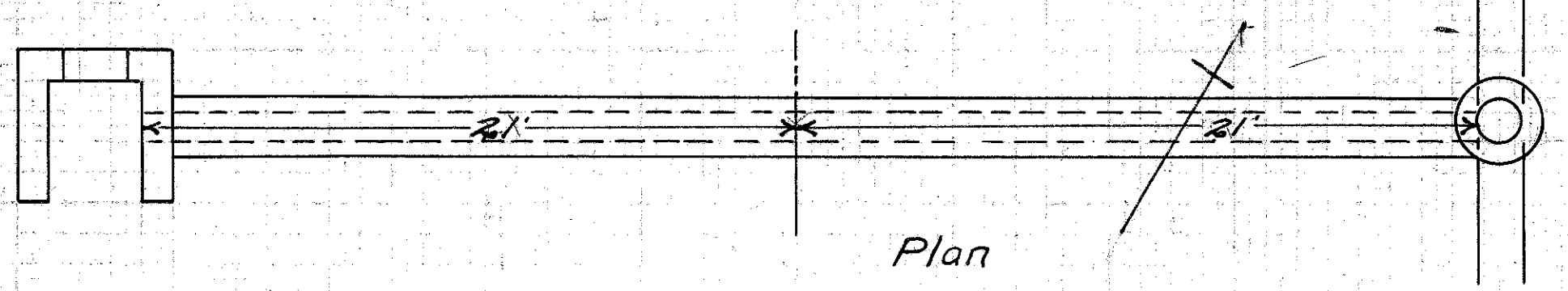
Plan



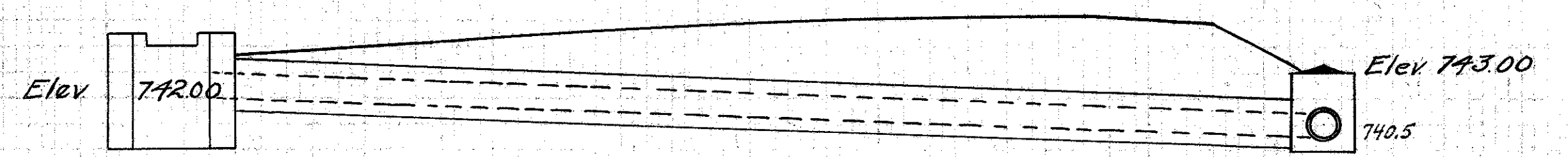
Gross-Section
Culvert No. 10

Material	Vib. pipe	Grade Elevation	720.55	Estimated Quantities
Type	Vib. pipe (enc.)	Grade %	8.00	Excav.
Size	12"	Scale	1" = 5'	1-2-3/4 conc.
Length	56'	Date	March 1925	1-3-5 conc.
Drainage Area				6 cu yds. 35 lbs. steel
Work Required	Build std 15" encased vib. pipe culvert 56' long - 1 headwall on L. + 1 inlet basin on R.			Inlet basin 1

Station 110+0



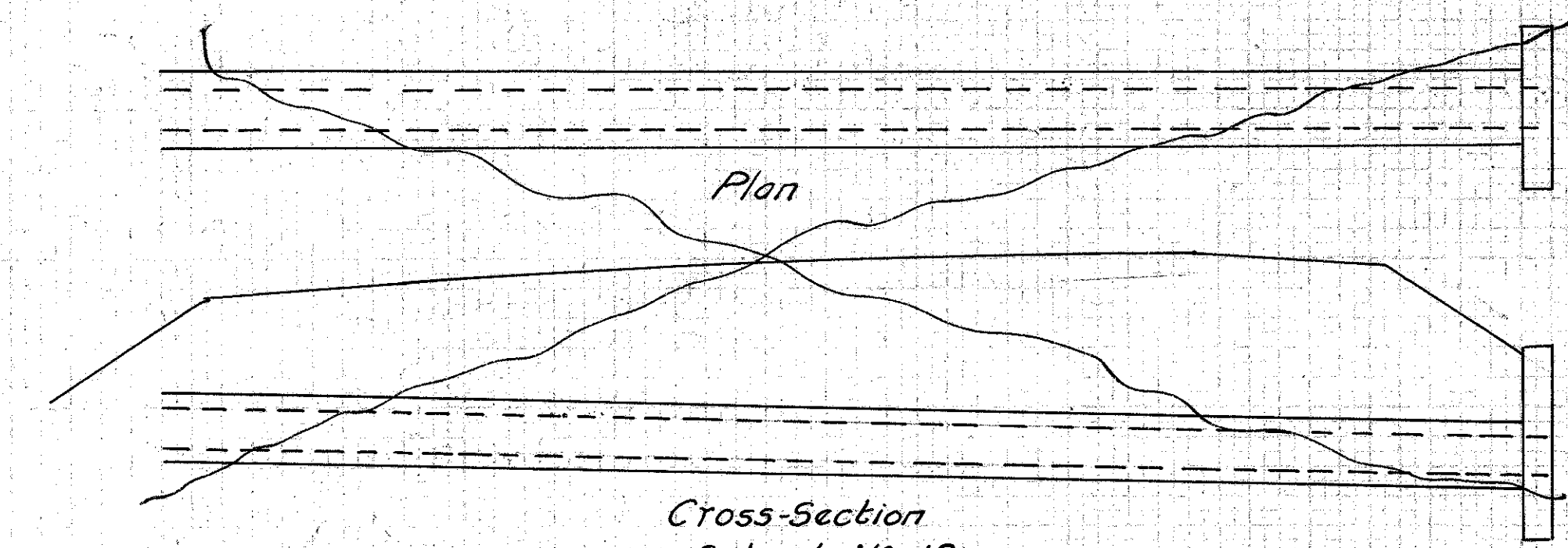
Plan



Gross-Section
Culvert No. 9

Material	Vib. Pipe	Grade Elevation	744.55	Estimated Quantities
Type	Vib. Pipe (encased)	Grade %	0%	Excavation
Size	12"	Scale	1" = 5'	15.0 cu yds.
Length	42'	Date	Mar 1925	1-2-3/4 Conc.
Drainage Area				2.0 "
Work Required	Build std 12" encased Vib pipe culvert - 1 U inlet on L + 1 inlet basin on R			1-3-5 Conc.
				4.5 "
				12" Vib Pipe
				42 lin. ft.
				Inlet Basin 1
				Steel Reinf.
				15 lbs.

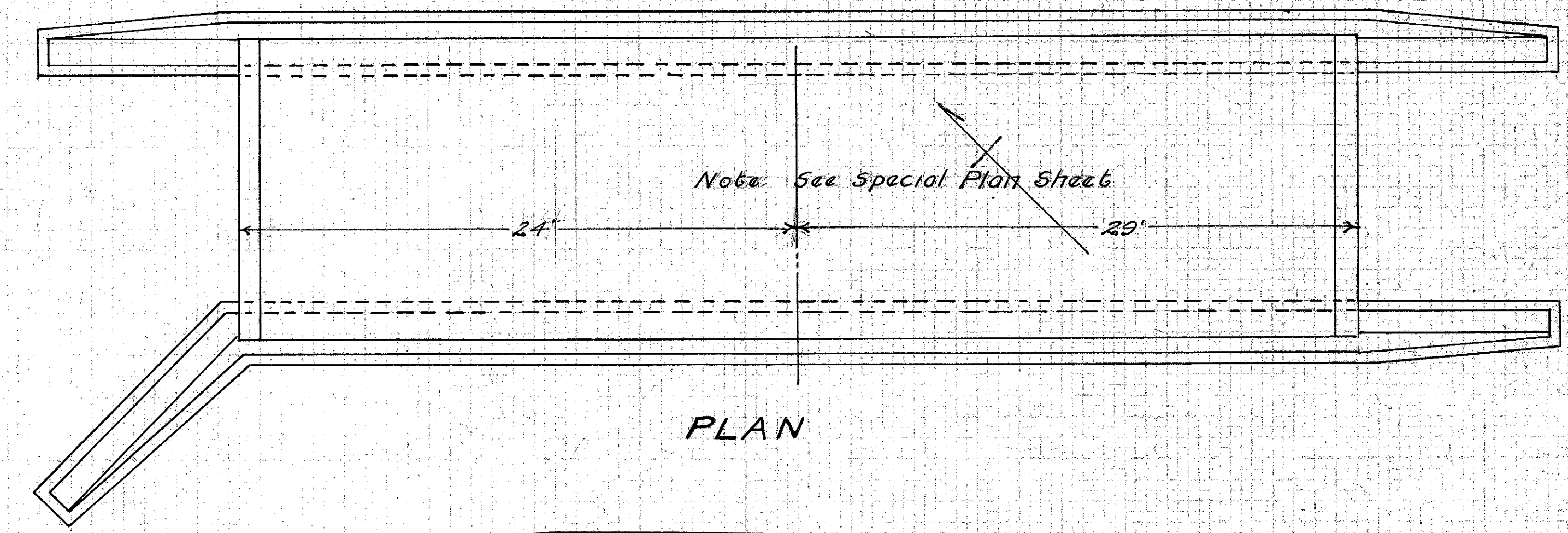
Station 107+00



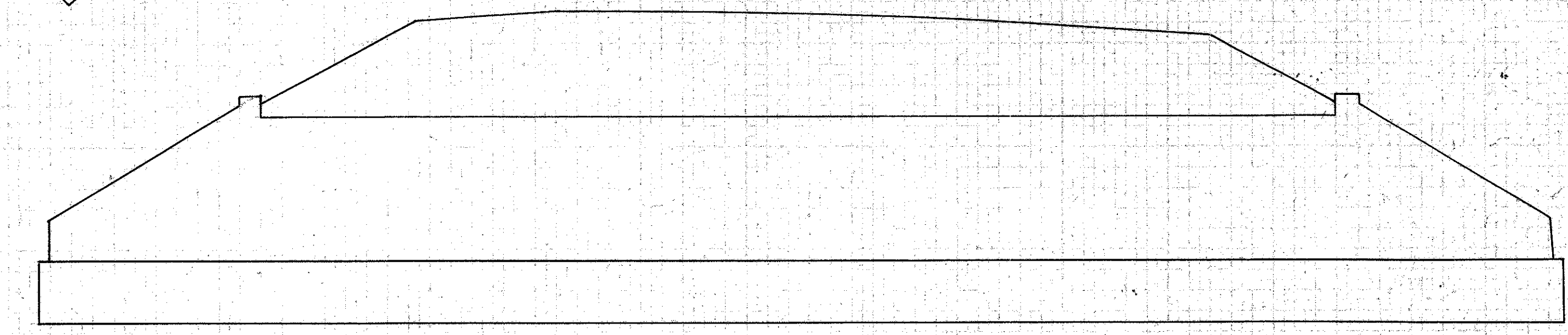
Cross-Section
Culvert No. 12

Material	Vib. Pipe	Grade Elevation	719.55	Estimated Quantities
Type	Vib. pipe. mill	Grade %	8%	Excav.
Size	15"	Scale	1" = 5'	1-2-4 conc.
Length	15'	Date	Mar 1925	1-3-6 conc.
Drainage Area				6 cu yds
Work Required	Build std 15" encased vib. pipe culvert + 1 headwall connect with sewer from Sta 120+50 on R.			15" Vib pipe
				46 lin. ft.

Station 118+40



PLAN



CROSS-SECTION

CULVERT No. 11

Material	Concrete	Grade Elevation	695.05	Estimated Quantities
Type	Slab Top	Grade %	4.0%	Remove old bridge + both walls
Size	12"	Scale	1" = 5'	Old stone relaid
Length	53'	Date	Mar 1925	111 cu yds.
Drainage Area				Excavation
Work Required	Build slab top culvert - Remove old stone walls and build retaining wall along bank of stream as directed by engineer.			1-3-5 Concrete
				47.4 cu yds.
				1-2-4 Concrete
				49.7 cu yds.
				1-2-3/4 Concrete
				29.5 cu yds.
				Steel Reinf.
				4438 lbs.

Station 112+50