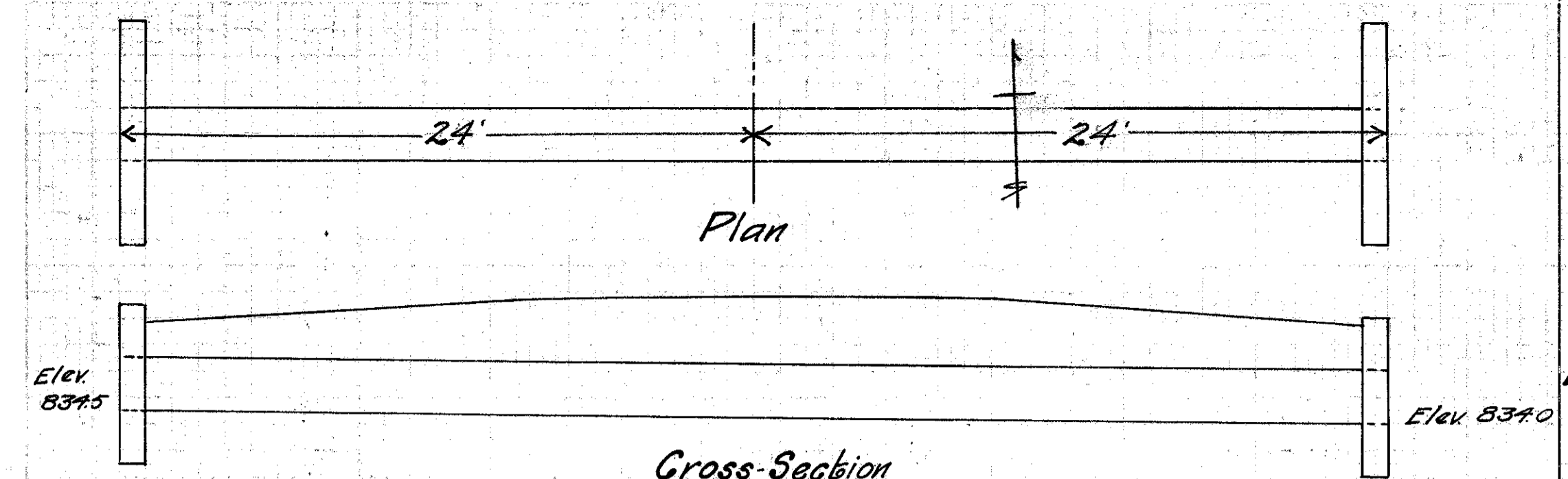


FED. RD. DIST. N <sup>o</sup>	STATE	FED. AID PROJECT	FISCAL YEAR	
	OHIO			27
				32

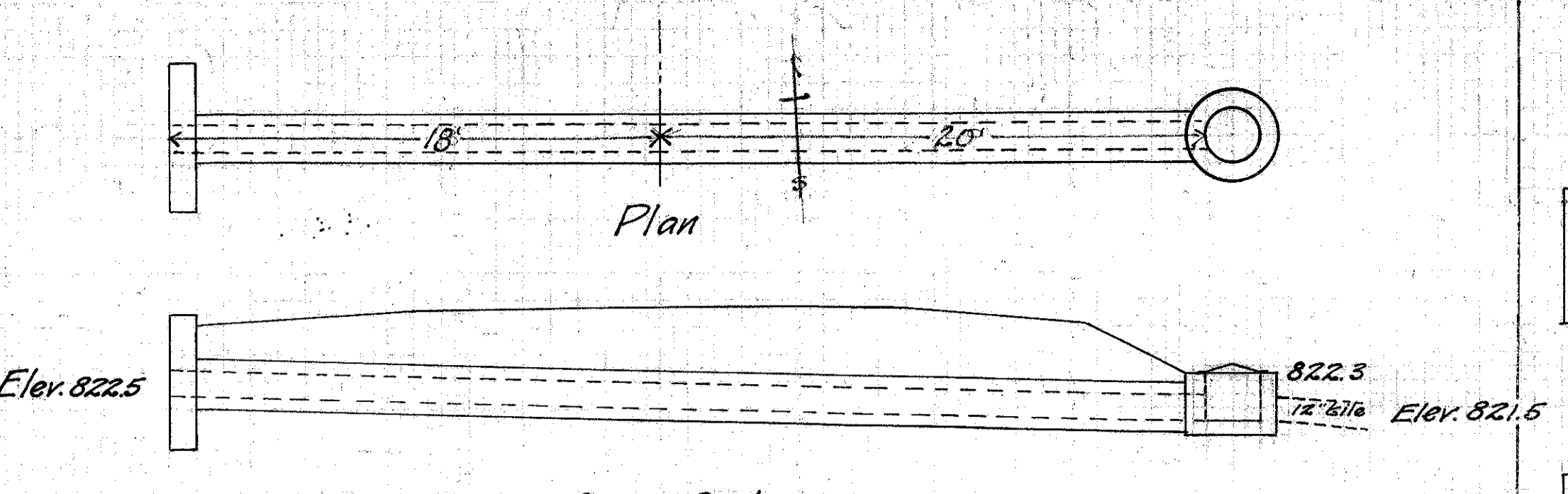
I.G.H. N<sup>o</sup> 466 SEC. D LAKE COUNTY



Gross-Section  
Culvert No. 3

Material Cor. iron pipe Grade Elevation 838.96 Estimated Quantities  
 Type Cor. pipe culv. Grade % 0.60 Excav. 17 cu. yds.  
 Size 24" Scale 1"=5' 1-2-3/4 conc. 3.5 cu. yds.  
 Length 48' Date March 1925 Old stone removed 4 cu. yds.  
 Drainage Area 24" corr. i. p. 48 lin. ft. 105 lbs. steel  
 Work Required Remove old coverstones & build std. 24" corr. pipe culvert & 2 std. hws. clean old ditch so to be

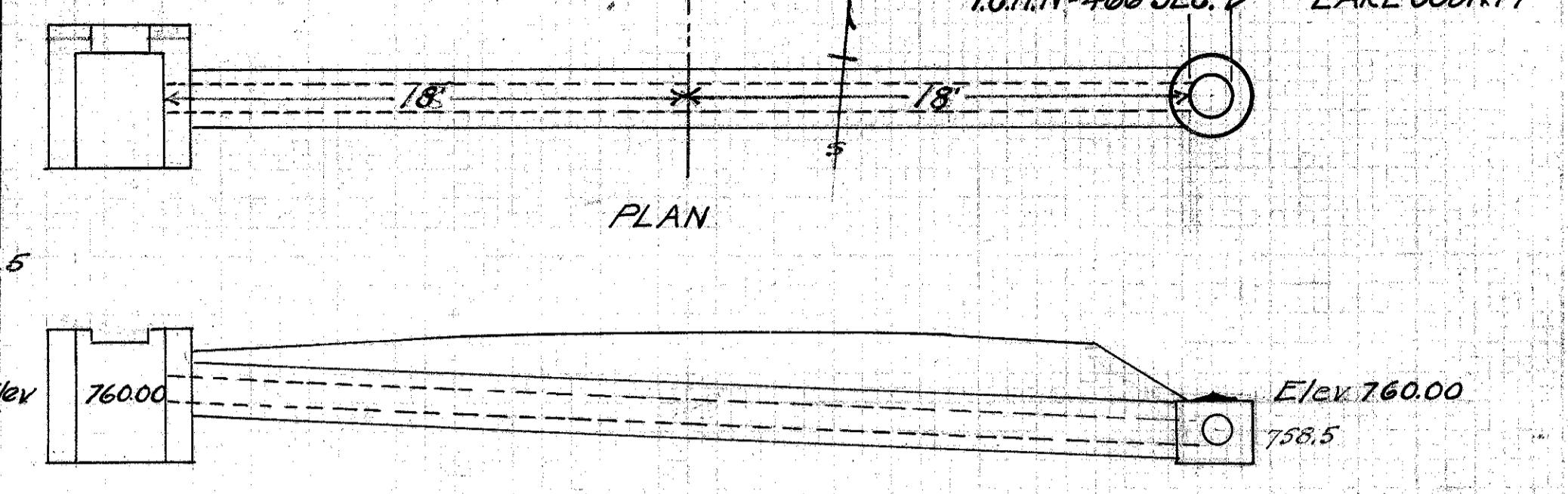
Station 67+71



Gross-Section  
Culvert No. 5

Material Vib. pipe Grade Elevation 825.81 Estimated Quantities  
 Type Vib. pipe (enc.) Grade % 0.64 Excav. 5 cu. yds.  
 Size 12" Scale 1"=5' 1-2-3/4 conc. 1 cu. yd.  
 Length 38' Date March 1925 1-3-5 conc. 4.1 cu. yds.  
 Drainage Area 1 1/2" v. pipe 38 lin. ft.  
 Work Required Remove 18' of 10" Vib. pipe & build 12" enc. vib. pipe culvert. 1 headwall on L & 1 inlet 20' to R. connect to 12" tile 33 lbs. steel

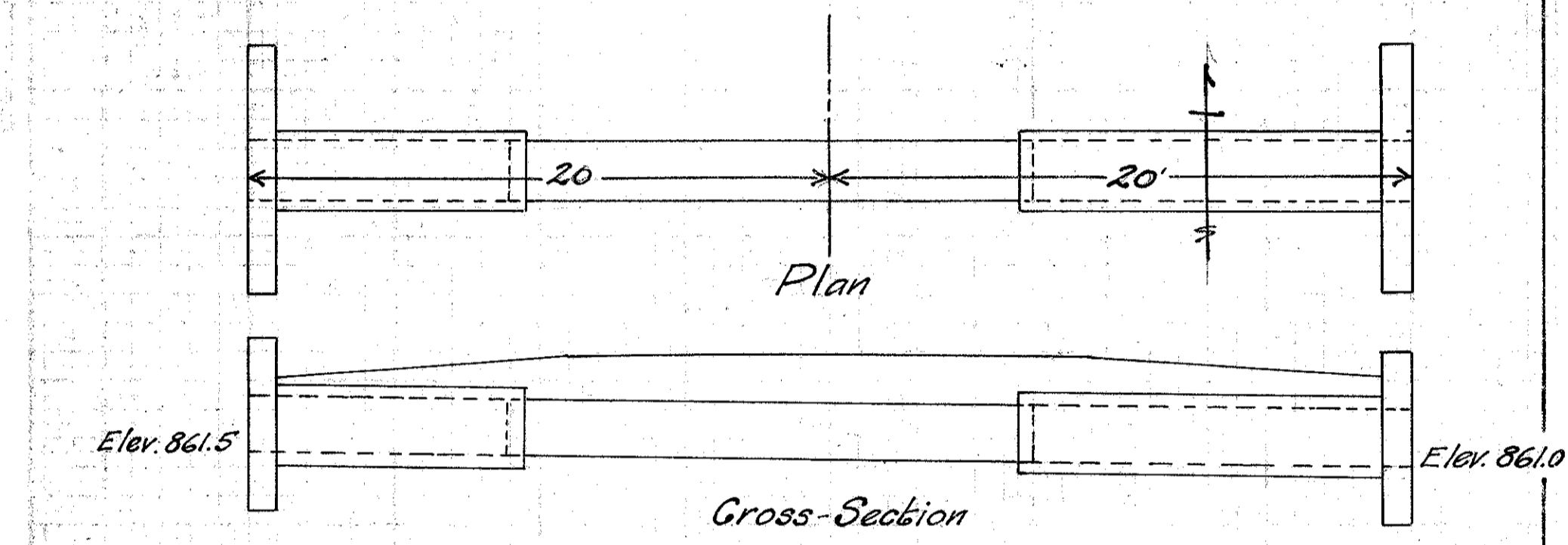
Station 78+58



Gross-Section  
Culvert N<sup>o</sup> 8

Material Vib. Pipe Grade Elevation 762.55 Estimated Quantities  
 Type Vib. pipe-hillside Grade % 8% Excav. 20 cu. yds.  
 Size 12" Scale 1"=5' 1-2-3/4 conc. 2.0  
 Length 36' Date Mar 1925 1-3-5 conc. 3.9  
 Drainage Area 566 Reinf 15 lbs.  
 Work Required Build std. 12" enc. vib. pipe culv. 12 Vib. Pipe 36 lin. ft. 36' long. 1 hws. on L & 1 inlet basin on R 1 Inlet basin 1

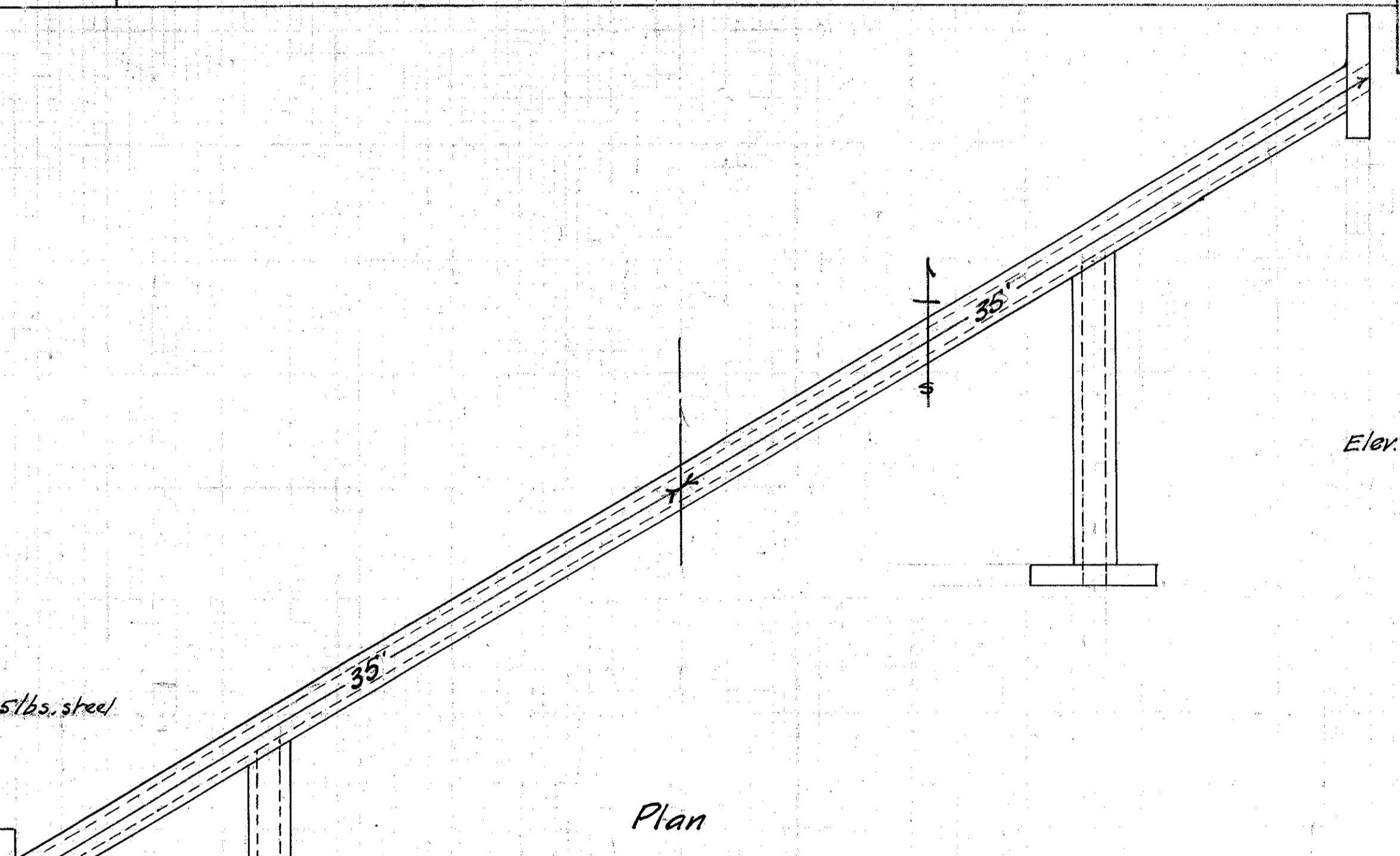
Station 103+25



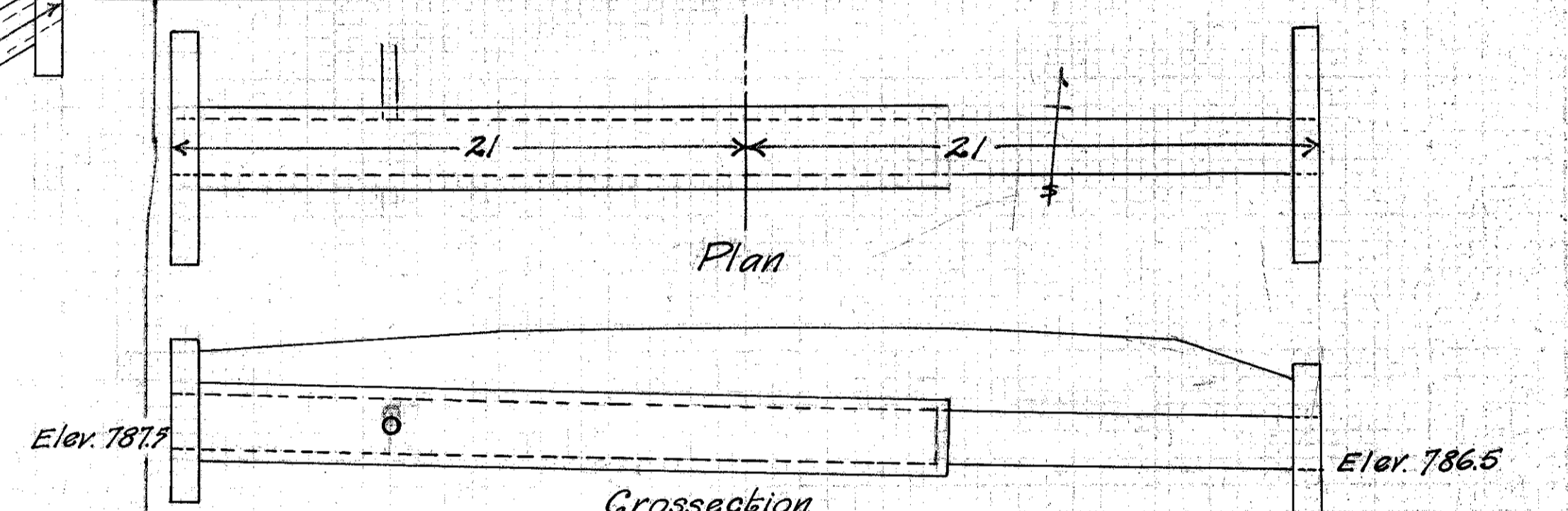
Gross-Section  
Culvert No. 2

Material Vib. pipe Grade Elevation 864.90 Estimated Quantities  
 Type Vib. pipe (enc.) Grade % 0.20 Excav. 7 cu. yds.  
 Size 24" Scale 1"=5' 1-2-3/4 conc. 3.5 cu. yds.  
 Length 40' Date March 1925 1-3-5 conc. 4.5 cu. yds.  
 Drainage Area 24" vib. pipe 40 lin. ft. 105 lbs. steel  
 Work Required Extend present 24" i. p. 14' to R. & 8' to L. with std. 24" encased verified pipe & build 2 std. headwalls clean out old cast iron pipe

Station 43+46



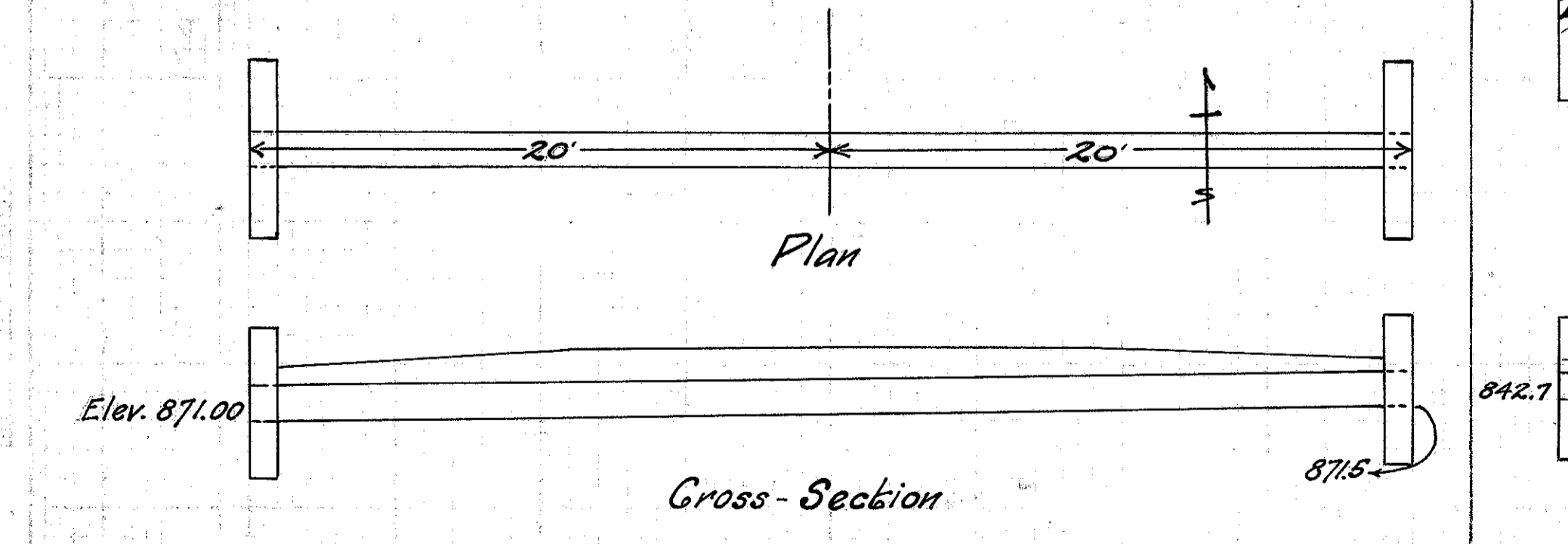
Plan



Gross-Section  
Culvert No. 7

Material Vib. Pipe Grade Elevation 791.89 Estimated Quantities  
 Type Vib. Pipe (encased) Grade % 0.80 Excav. 10.0 cu. yds.  
 Size 24" Scale 1"=5' 1-2-3/4 conc. 3.5 cu. yds.  
 Length 42' Date March 1925 1-3-5 conc. 5.8 cu. yds.  
 Drainage Area 24" Vib. Pipe 42 lin. ft. 24" x 6" T. 1  
 Work Required Remove 14' of 24" Cor. i. p. & lay on R. end of culvert. Remove & relay 24" Vib. Pipe & lay 6' of 24" Vib. Pipe along with 22' of new 24" Vib. Pipe in concrete. Connect 6" Vib. Pipe with 24" Vib. Pipe. Build 2 std. hws. 6" Vib. Pipe 8' lin. ft. 105 lbs. steel

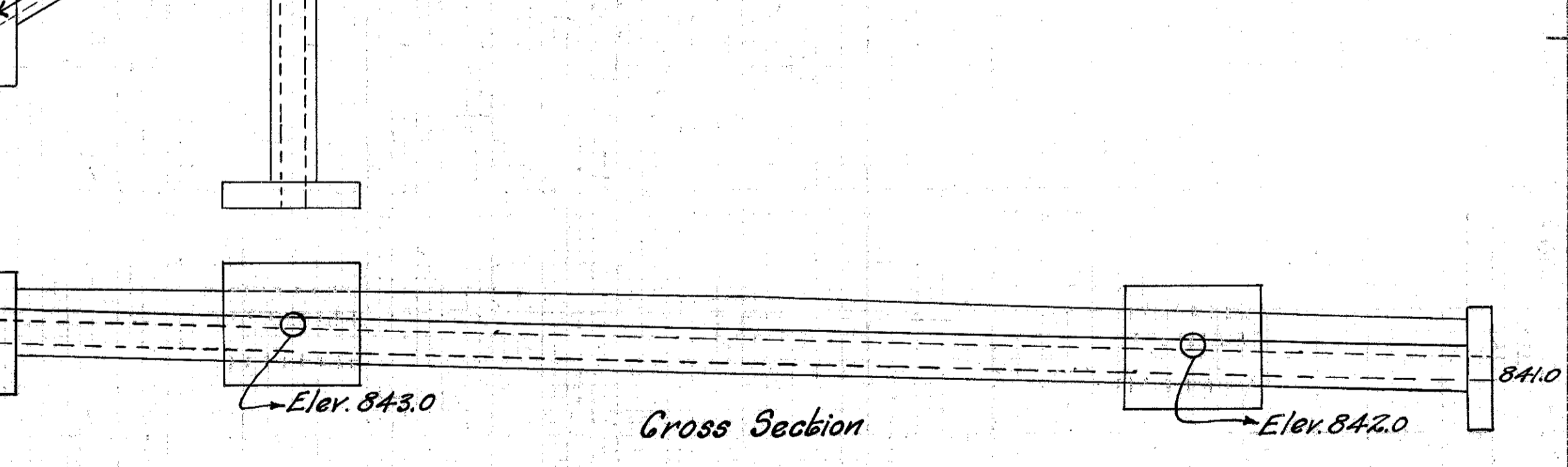
Station 92+36



Gross-Section  
Culvert No. 1

Material Cor. Iron Pipe Grade Elevation 873.87 Estimated Quantities  
 Type Std. Pipe Culv. Grade % 0.0 Excav. 6.0 cu. yds.  
 Size 15" Scale 1"=5' 1-2-3/4 conc. 2.3 cu. yds.  
 Length 40' Date March 1925 15" corr. i. p. 40 lin. ft. 70 lbs. steel  
 Drainage Area  
 Work Required Build 15" corr. iron pipe culvert & 2 std. headwalls

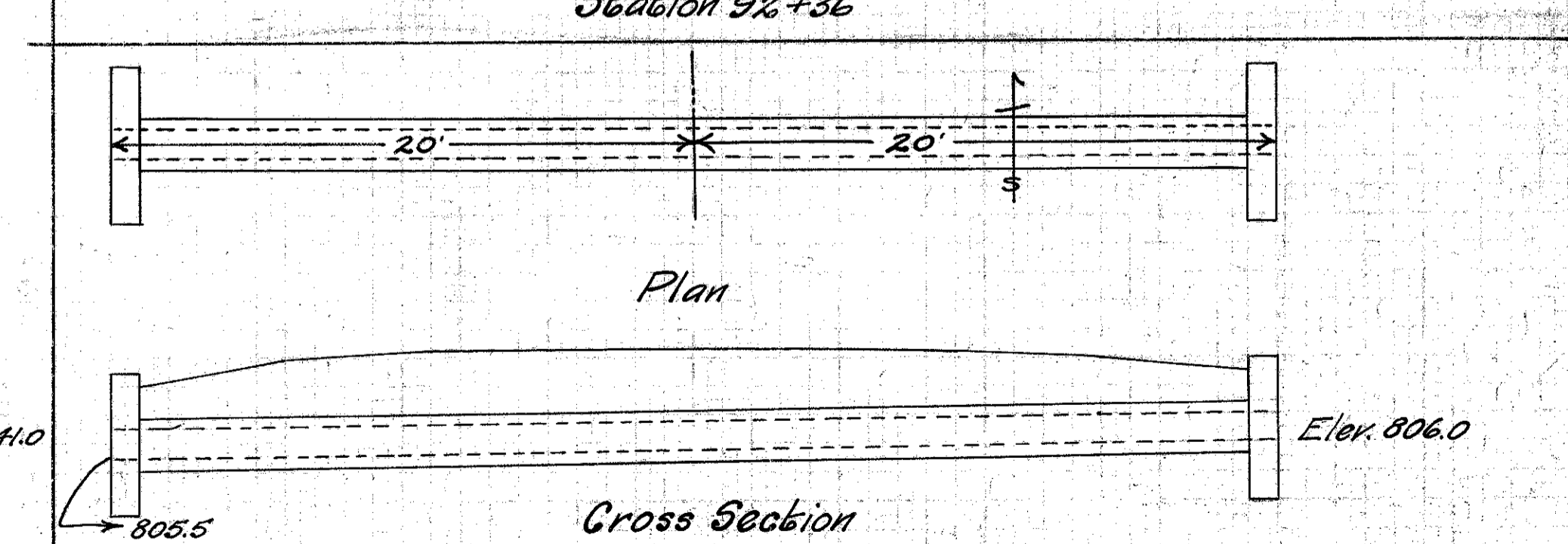
Station 25+04



Gross Section  
Culvert No. 4

Material Vib. pipe Grade Elevation 844.62 Estimated Quantities  
 Type Vib. pipe (enc.) Grade % 4.6 Excav. 11 cu. yds.  
 Size 12" Scale 1"=5' 1-2-3/4 conc. 4 cu. yds.  
 Length 70' Date March 1925 1-3-5 conc. 10.6 cu. yds.  
 Drainage Area 12" vib. pipe 94 lin. ft. 12" x 12" Y. 2  
 Work Required Build Std. 12" enc. vib. pipe culv. 70' long. Extend each Y. with 14"-12" enc. vib. pipe & build 4 hws. 130 lbs. steel

Sta. 72+0



Gross Section  
Culvert No. 6

Material Vib. pipe Grade Elevation 809.46 Estimated Quantities  
 Type Vib. pipe (encased) Grade % 0.72 Excav. 6 cu. yds.  
 Size 12" Scale 1"=5' 1-2-3/4 conc. 2 cu. yds.  
 Length 40' Date March 1925 1-3-5 conc. 4.3 cu. yds.  
 Drainage Area 12" Vib. pipe 40 lin. ft. 65 lbs. steel  
 Work Required Remove 26' of 10" Vib. pipe & build std. 12" encased Vib. pipe culvert 40' long & 2 headwalls.

Station 84+61