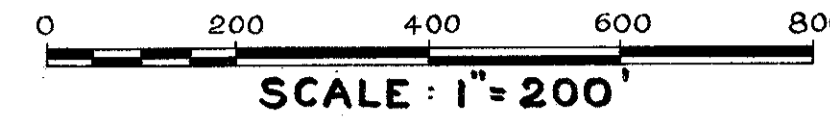


CENTERLINE PLAT



LAK 91-0.00-2.38

STATE ROUTE 91 RELOCATION FROM U.S.R. 6 TO S.R.84

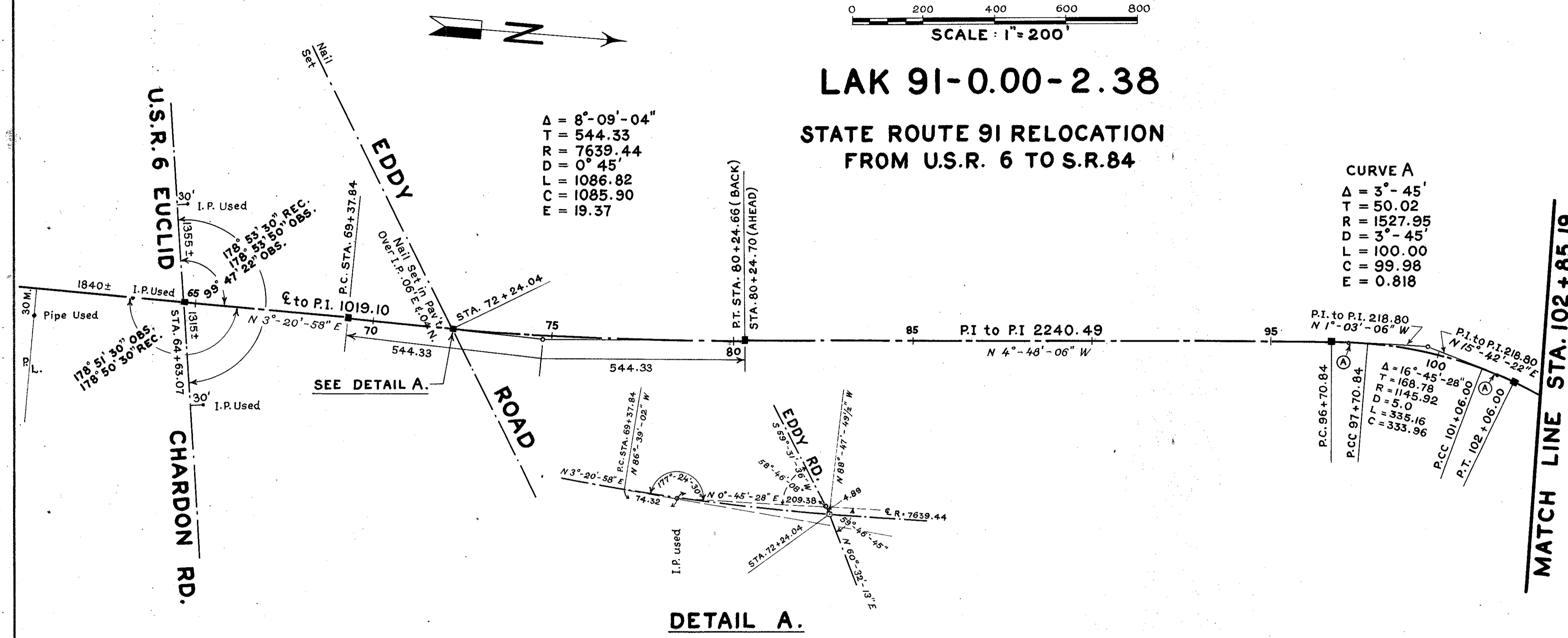
$\Delta = 8^{\circ}-09'-04''$
 $T = 544.33$
 $R = 7639.44$
 $D = 0^{\circ}-45'$
 $L = 1086.82$
 $C = 1085.90$
 $E = 19.37$

CURVE A
 $\Delta = 3^{\circ}-45'$
 $T = 50.02$
 $R = 1527.95$
 $D = 3^{\circ}-45'$
 $L = 100.00$
 $C = 99.98$
 $E = 0.818$

NOTE:

1. All Points marked are P.I. Points.
2. Centerline Reference Monuments Will be Set After Construction at:

- Sta. 64+63.07 (Intersection S.R. 91 and U.S.R. 6)
- P.C. Sta. 69+37.84
- Sta. 72+24.04 (Intersection EDDY RD. and S.R. 91)
- P.T. Sta. 80+24.66
- P.C. Sta. 96+70.84
- P.T. Sta. 102+06.00
- P.C. Sta. 104+88.64
- P.T. Sta. 109+67.21
- P.C. Sta. 122+89.83
- P.T. Sta. 126+66.08
- P.C. Sta. 128+27.57
- P.T. Sta. 131+61.74
- Sta. 131+74.69 (Intersection MAPLE GROVE and S.R. 91)
- Sta. 136+66.94 (Intersection S.R. 84 and S.R. 91)



DETAIL A.

MATCH LINE STA. 102+85.19

MATCH LINE STA. 102+85.19

CURVE B
 $\Delta = 2^{\circ}-37'-30''$
 $T = 50.01$
 $R = 2182.77$
 $D = 2^{\circ}-37'-30''$
 $L = 100.00$
 $C = 99.99$
 $E = 0.57$

STATE OF OHIO
 DEPARTMENT OF HIGHWAYS
 LAK 91-0.00-2.38
 CENTER LINE SURVEY
 CITY OF WILLOUGHBY
 VILLAGE OF WILLOUGHBY HILLS
 LAKE COUNTY
 SCALE: 1" = 200' JUNE 1961

ENGINEERS CERTIFICATE:

I hereby certify that this plat is a correct plat of the centerline survey for the above titled project as surveyed and planned.

DATE JUNE 20 1961

 DIVISION DEPUTY DIRECTOR

DATE June 27 1961

 REGISTERED SURVEYOR NO 331 OHIO

