

RIGHT OF WAY & CURVE DATA	
Δ = 47° 18' 08"	D = 11° 48' 00"
R = 486.31'	T = 212.98'
Ch = 390.18'	L = 401.44'

CONSTRUCTION & CURVE DATA	
Δ = 47° 18' 08"	D = 6° 00' 00"
R = 954.93'	Ch = 766.17'
T = 418.21'	L = 783.37'
E = 87.55'	

CURVE DATA PROPOSED R/W LINE	
Δ = 43° 04' 15"	D = 35° 10' 25"
R = 162.89'	T = 64.28'
Ch = 119.59'	L = 122.45'
E = 12.22'	

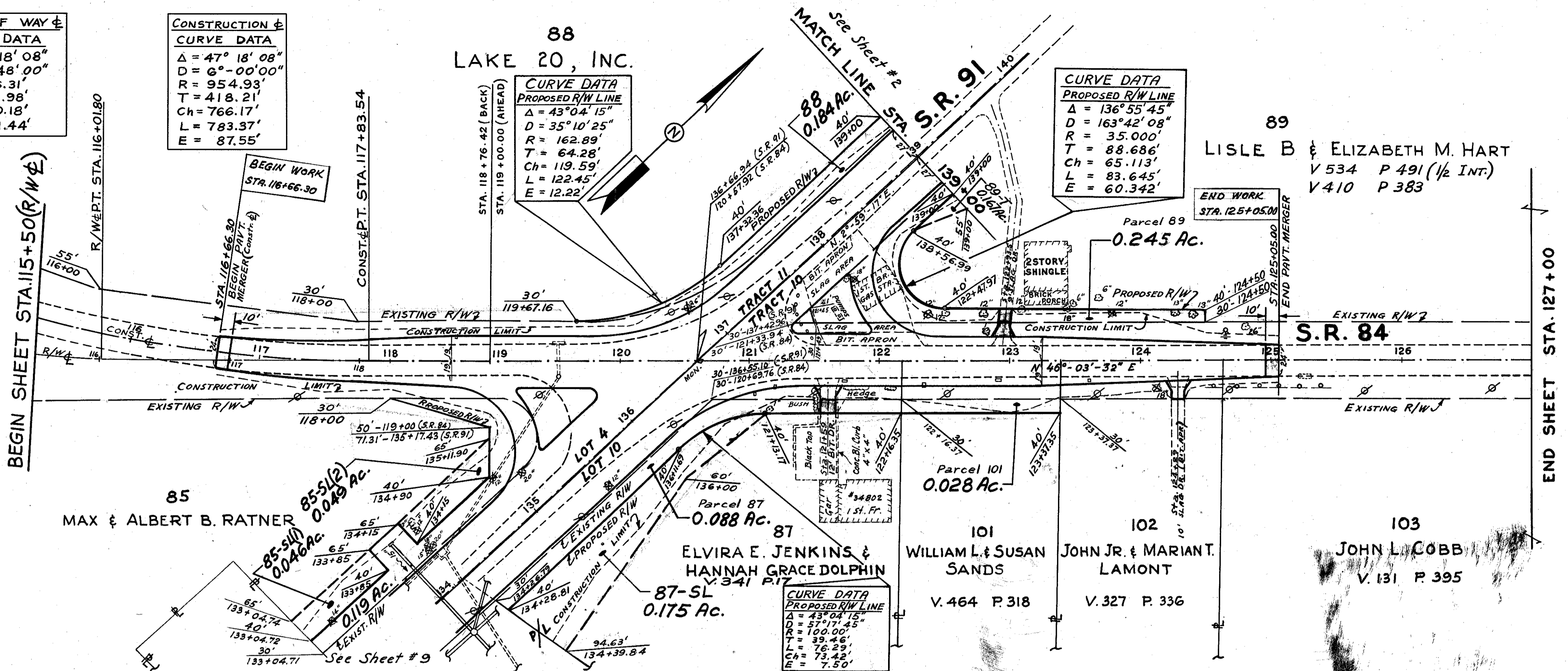
CURVE DATA PROPOSED R/W LINE	
Δ = 136° 55' 45"	D = 163° 42' 08"
R = 35.000'	T = 88.686'
Ch = 65.113'	L = 83.645'
E = 60.342'	

FED. RD. DIVISION	STATE	PROJECT
2	OHIO	

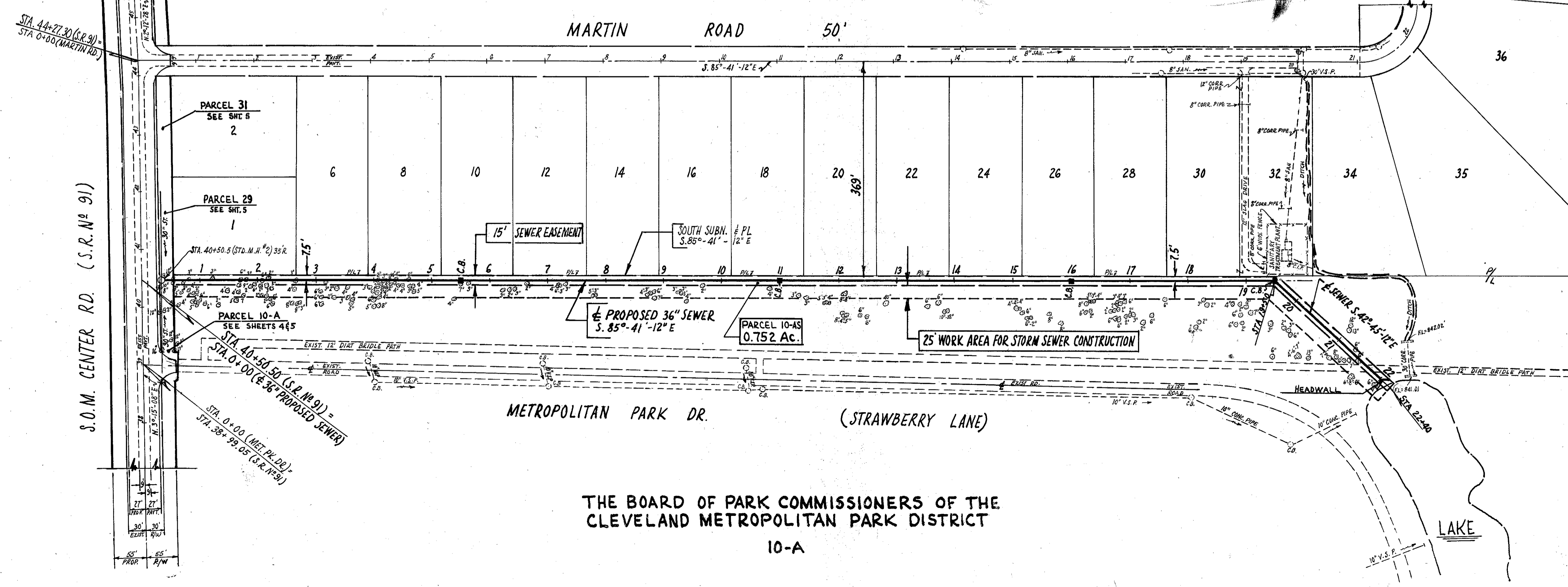
LAKE COUNTY
LAK 91-(0.00)-(2.38)

146
146

R/W. 12
12



SCALE: 1" = 50'



THE BOARD OF PARK COMMISSIONERS OF THE
CLEVELAND METROPOLITAN PARK DISTRICT

10-A

SCALE 1" = 100'

NO.	DATE	REVISIONS	BY	DATE
1	9-19-65	Deleted Parcel 102 - Added Parcel 10 A.S		
2				
3				
4				
5				
6				
7				
8				
9				
10				
11				
12				
13				
14				
15				
16				
17				
18				
19				
20				
21				
22				
23				
24				
25				
26				
27				
28				
29				
30				
31				
32				
33				
34				
35				
36				
37				
38				
39				
40				
41				
42				
43				
44				
45				
46				
47				
48				
49				
50				

R/W PLAN - S.R. 91 AND S.R. 84 INTERSECTION AND MARTIN ROAD.

FEB 24 1964