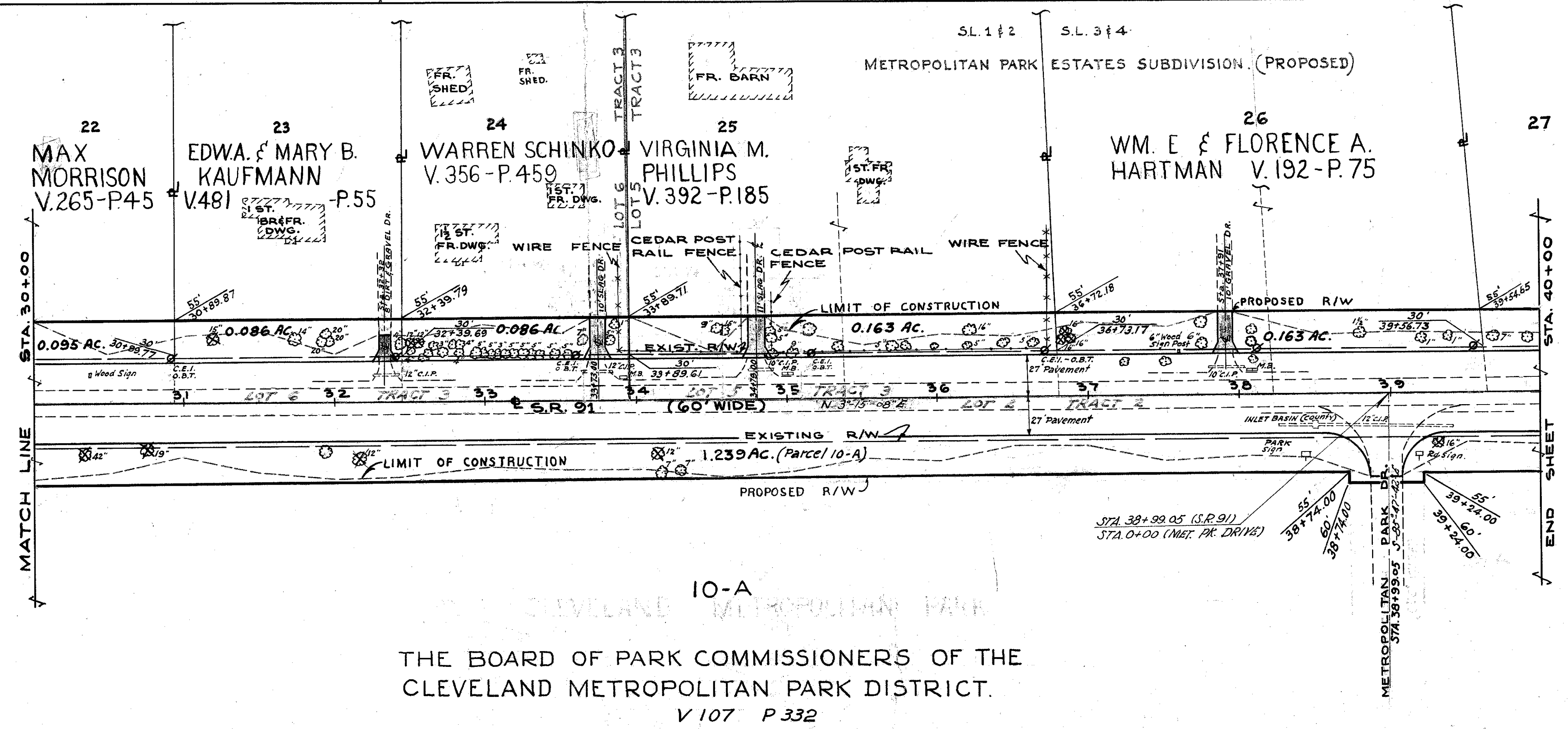


R/W 4/12

THE BOARD OF PARK COMMISSIONERS OF THE
CLEVELAND METROPOLITAN PARK DISTRICT.
V 107 P 332



10-A
THE BOARD OF PARK COMMISSIONERS OF THE
CLEVELAND METROPOLITAN PARK DISTRICT.
V 107 P 332

Date	REVISIONS	BY
12-3-63	Parcel 19-5, deleted.	H.M.

R/W PLAN STA. 20+00 TO STA. 40+00

FEB 24 1964