

# 21" & 30" PIPE CULVERT

STA. 92+06

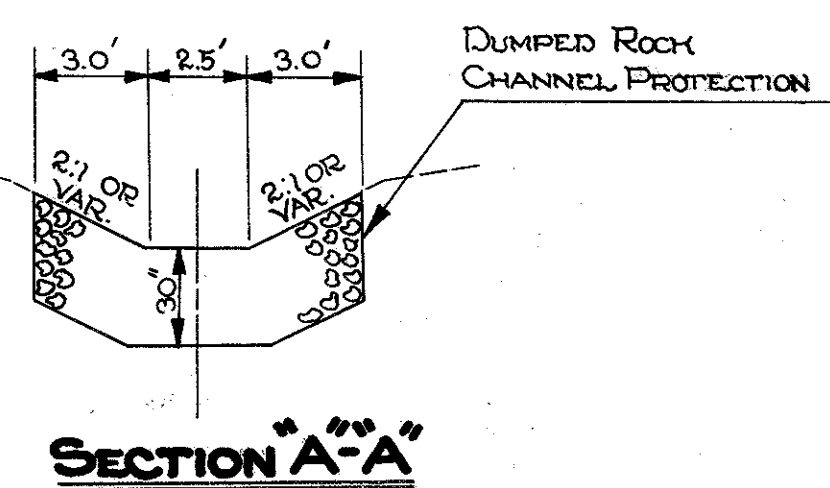
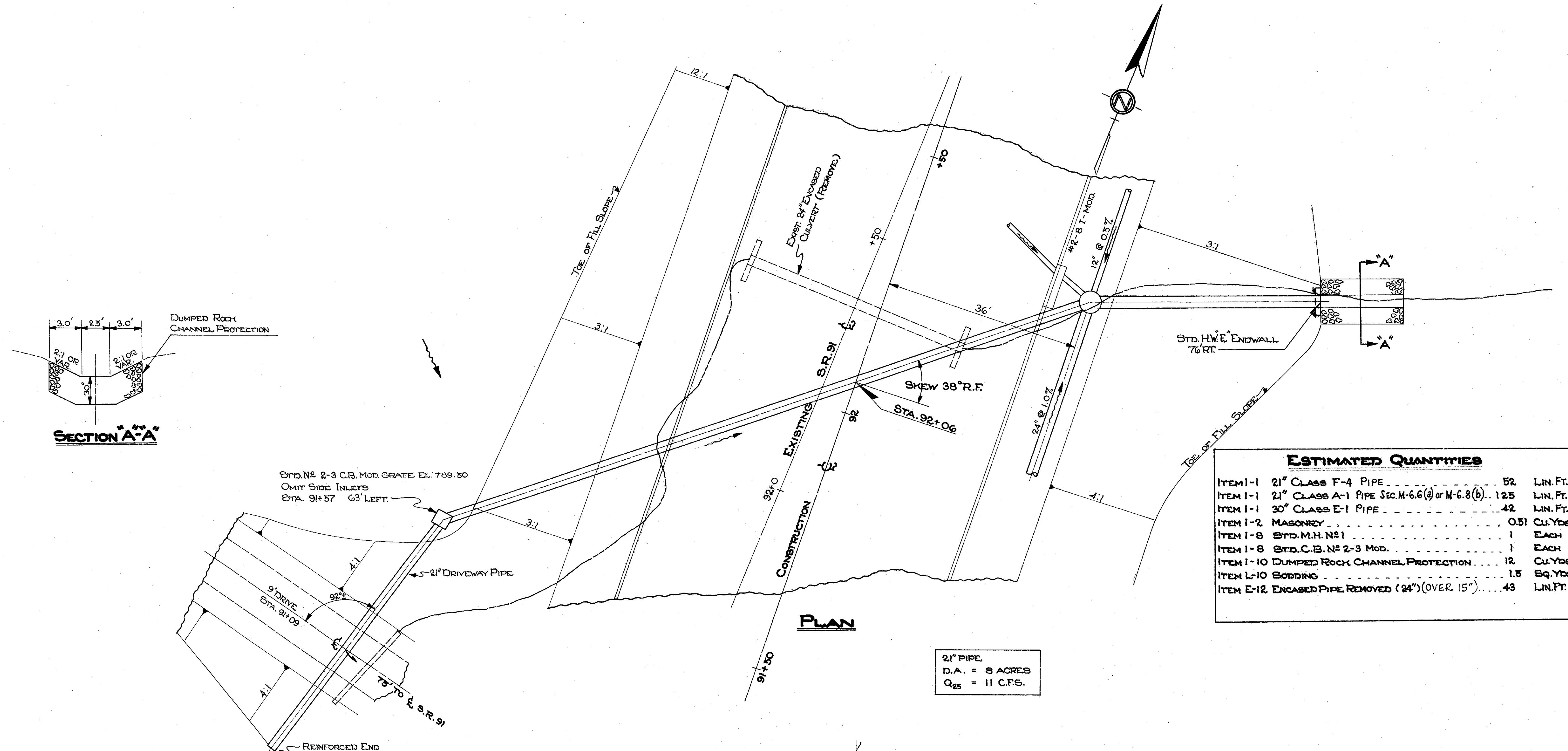
SCALE: 1" = 10'

FED. RD. DIVISION	STATE	PROJECT
2	OHIO	

53  
146

LAKE COUNTY  
LAK- 91-(0.00)-(2.38)

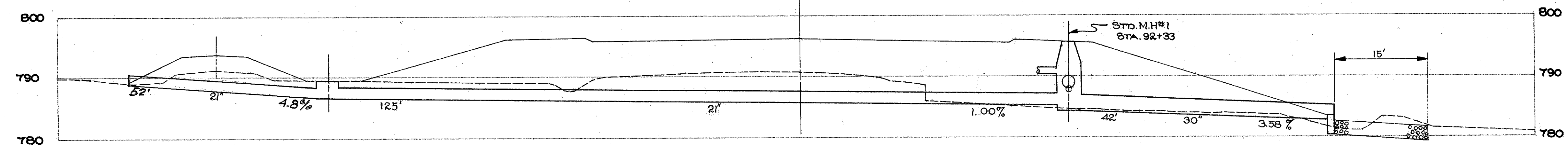
I-C SHEET NO 27



ESTIMATED QUANTITIES		
ITEM 1-1	21" CLASS F-4 PIPE	52 LIN. FT.
ITEM 1-1	21" CLASS A-1 PIPE SEC. M-6.6 (a) or M-6.8 (b)	125 LIN. FT.
ITEM 1-1	30" CLASS E-1 PIPE	42 LIN. FT.
ITEM 1-2	MASONRY	0.51 CU. YDS.
ITEM 1-8	STD. M.H. #1	1 EACH
ITEM 1-8	STD. C.B. #2-3 MOD.	1 EACH
ITEM 1-10	DUMPED ROCK CHANNEL PROTECTION	12 CU. YDS.
ITEM 1-10	BODDING	1.5 SQ. YDS.
ITEM E-12	ENCASED PIPE REMOVED (24") (OVER 15")	43 LIN. FT.

STD. #2-3 C.B. MOD. GRATE EL. 789.50  
OMIT SIDE INLETS  
STA. 91+57 6' LEFT.

21" PIPE  
D.A. = 8 ACRES  
Q<sub>25</sub> = 11 C.F.S.



FL. 21" 789.00

FL. C.B. # 21" 786.50

FL. 21" S.W. 785.25  
FL. 24" S. 789.0  
FL. M.H. # 30" 784.5  
FL. 12" N. 787.84  
FL. 12" N.W. 790.45

FL. 30" 783.00

STRUCTURE NO LAK- 91-1.74

PIPE CULVERT STA. 92+06