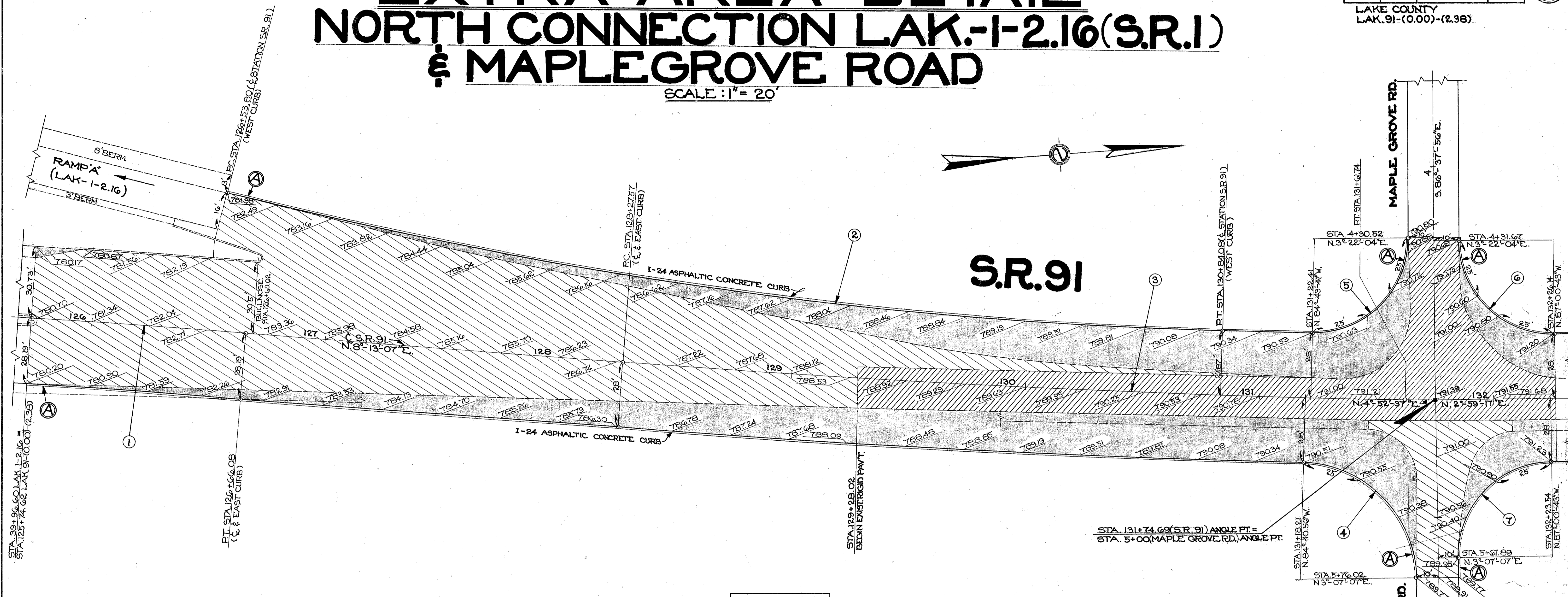


EXTRA AREA DETAIL NORTH CONNECTION LAK-1-2.16(S.R.1) & MAPLE GROVE ROAD

SCALE: 1" = 20'

FED. RD. DIVISION	STATE	PROJECT	44 146
2	OHIO		

LAKE COUNTY
LAK. 91-(0.00)-(2.38)



STATION	EXTRA AREA QUANTITIES					
	E-8	B-35	T-35	B-21	I-22	I-24
FROM TO	REMOVAL & DISPOSAL OF EXISTING PAVEMENT	1 1/2" ASPH. CONCRETE LEVELING COURSE	1" ASPH. CONCRETE SURFACE COURSE	WATERPROOFED AGGREGATE BASE COURSE	SUBBASE	ASPHALTIC CONCRETE CURB
	SQ. YDS.	CU. YDS.	CU. YDS.	CU. YDS.	CU. YDS.	LIN. FT.
125+74.62 132+26.14	801	210.1	140.5	1008	888.1	1291
TOTAL	801	210.1	140.5	1008	888.1	1291

① Δ = 3°-45'-45" D = 1°-00' R = 5729.58' T = 188.19' L = 376.25' Ch = 376.18' E = 3.09'	② Δ = 12°-41'-09" D = 2°-56'-49" R = 1945.26' T = 216.23' L = 430.70' Ch = 429.82' E = 11.98'	③ Δ = 3°-20'-30" D = 1°-00' R = 5729.58' T = 167.13' L = 334.17' Ch = 334.12' E = 2.44'
④ Δ = 87°-50'-54" D = 114°-35'-30" R = 50' T = 48.16' L = 76.66' Ch = 69.37' E = 19.42'	⑤ Δ = 91°-57'-00" D = 143°-14'-22" R = 40' T = 41.39' L = 64.19' Ch = 57.52' E = 17.56'	⑥ Δ = 90°-22'-47" D = 143°-14'-22" R = 40' T = 40.27' L = 63.10' Ch = 56.75' E = 16.76'
⑦ Δ = 89°-52'-10" D = 143°-14'-22" R = 40' T = 39.91' L = 62.74' Ch = 57.48' E = 16.50'		

LEGEND

- REMOVAL & DISPOSAL OF EXISTING NON-RIGID PAVEMENT. **REPLACE WITH NEW PAVEMENT.**
- REMOVAL & DISPOSAL OF EXISTING RIGID PAVEMENT. REPLACE WITH NEW PAVEMENT.**
- NEW PAVEMENT.**
- REDUCE 6" CURB HEIGHT TO 2" IN 15'

* COST OF REMOVAL AND DISPOSAL OF EXISTING NON-RIGID PAVEMENT TO BE INCLUDED WITH ITEM E-1, ROADWAY EXCAVATION.

** NEW PAVEMENT TO BE: 1" T-35, 1/2" B-35, 7" B-21, 6" I-22.