

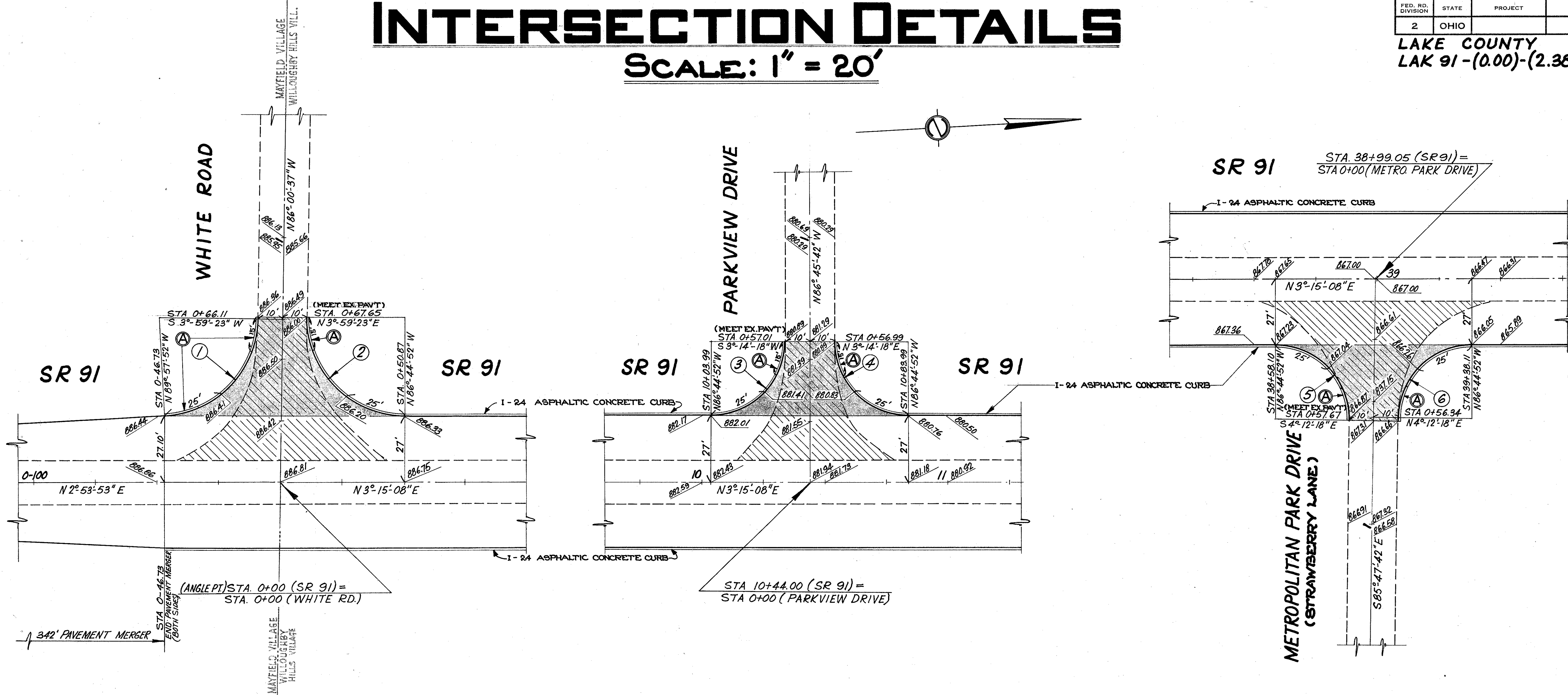
# INTERSECTION DETAILS

SCALE: 1" = 20'

FED. RD. DIVISION	STATE	PROJECT
2	OHIO	

39  
146

LAKE COUNTY  
LAK 91-(0.00)-(2.38)



CURVE DATA		
① D = 143°-14'-22" Δ = 86°-02'-45" R = 40' T = 37.35' L = 60.07' Ch = 54.58' E = 14.72'	② D = 143°-14'-22" Δ = 90°-44'-15" R = 40' T = 40.52' L = 63.35' Ch = 56.93' E = 16.94	③ D = 190°-59'-10" Δ = 90°-00'-50" R = 30' T = 30.44' L = 47.13' Ch = 42.73' E = 12.61'
④ D = 190°-59'-10" Δ = 89°-59'-10" R = 30' T = 29.57' L = 47.12' Ch = 42.12' E = 12.24'	⑤ D = 190°-59'-10" Δ = 90°-57'-10" R = 30' T = 30.50' L = 46.62' Ch = 42.78' E = 12.78'	⑥ D = 190°-59'-10" Δ = 89°-02'-50" R = 30' T = 29.46' L = 46.62' Ch = 42.07' E = 12.06'

**LEGEND**

- REMOVAL AND DISPOSAL OF EXISTING NON-RIGID PAVEMENT
- REMOVAL AND DISPOSAL OF EXISTING NON-RIGID PAVEMENT \* REPLACE WITH NEW PAVEMENT. \*\*
- NEW PAVEMENT

\* COST OF REMOVAL AND DISPOSAL OF EXISTING NON-RIGID PAVEMENT TO BE INCLUDED IN ITEM E-1 ROADWAY EXCAVATIONS.  
 \*\* NEW PAVEMENT TO BE: 1" T-35, 1 1/2" B-35, 7" B-21, 6" I-22  
 (A) REDUCE 6" CURB HEIGHT TO 2" IN 15'

LOCATION	EXTRA AREA QUANTITIES				
	T-35	B-35	B-21	I-22	I-24
	ASPHALTIC CONCRETE SURFACE COURSE	ASPHALTIC CONCRETE LEVELING COURSE	WATERPROOF AGGREGATE BASE COURSE	SUBBASE	ASPHALTIC CONCRETE CURB
	CU. YD.	CU. YD.	CU. YD.	CU. YD.	LIN. FT.
WHITE RD.,	2.8	3.8	19	18.1	61.2
PARKVIEW DR.,	3.5	5.2	26.1	25.1	93.3
METRO PARK DRIVE	3.3	5.0	25	24.1	93.5
<b>TOTAL</b> WILLOUGHBY HILLS VILL.	<b>9.6</b>	<b>14.0</b>	<b>70.1</b>	<b>67.3</b>	<b>248</b>
WHITE ROAD	2.7	3.9	19	18	61
<b>TOTAL</b> MAYFIELD VILLAGE	<b>2.7</b>	<b>3.9</b>	<b>19</b>	<b>18</b>	<b>61</b>