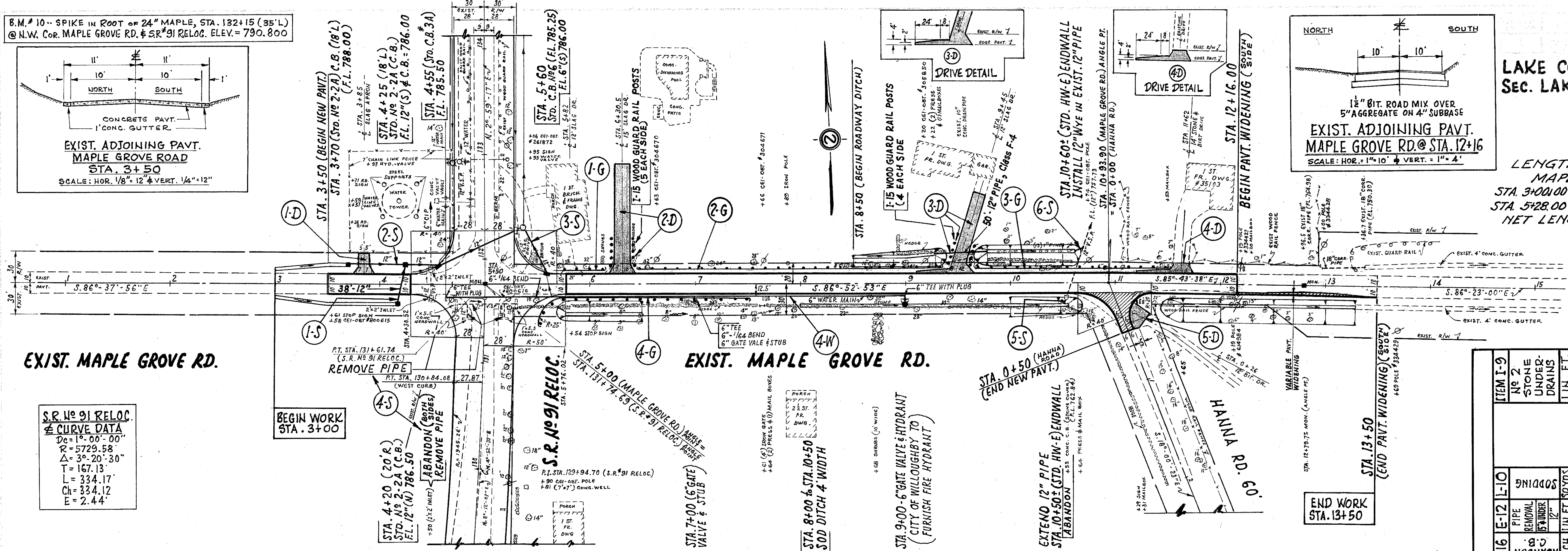
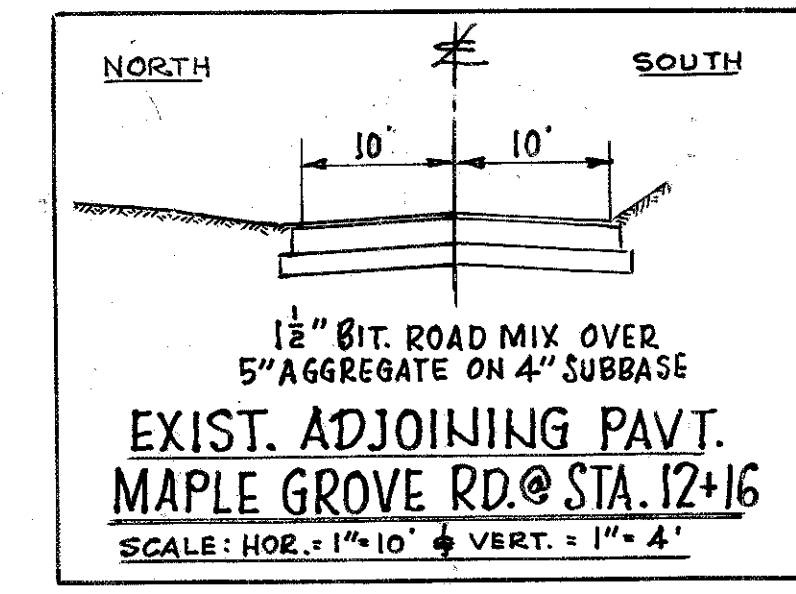
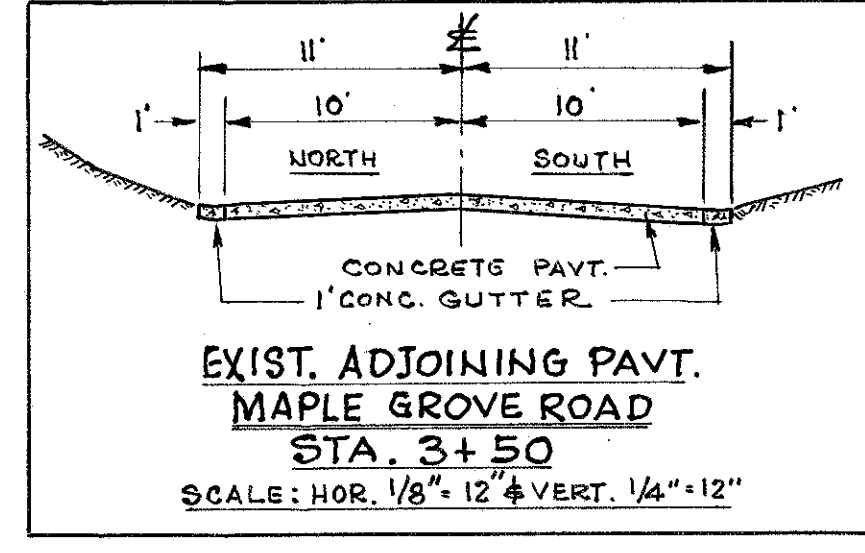


LAKE COUNTY
Sec. LAK 91 - (0.00) - (2.38)

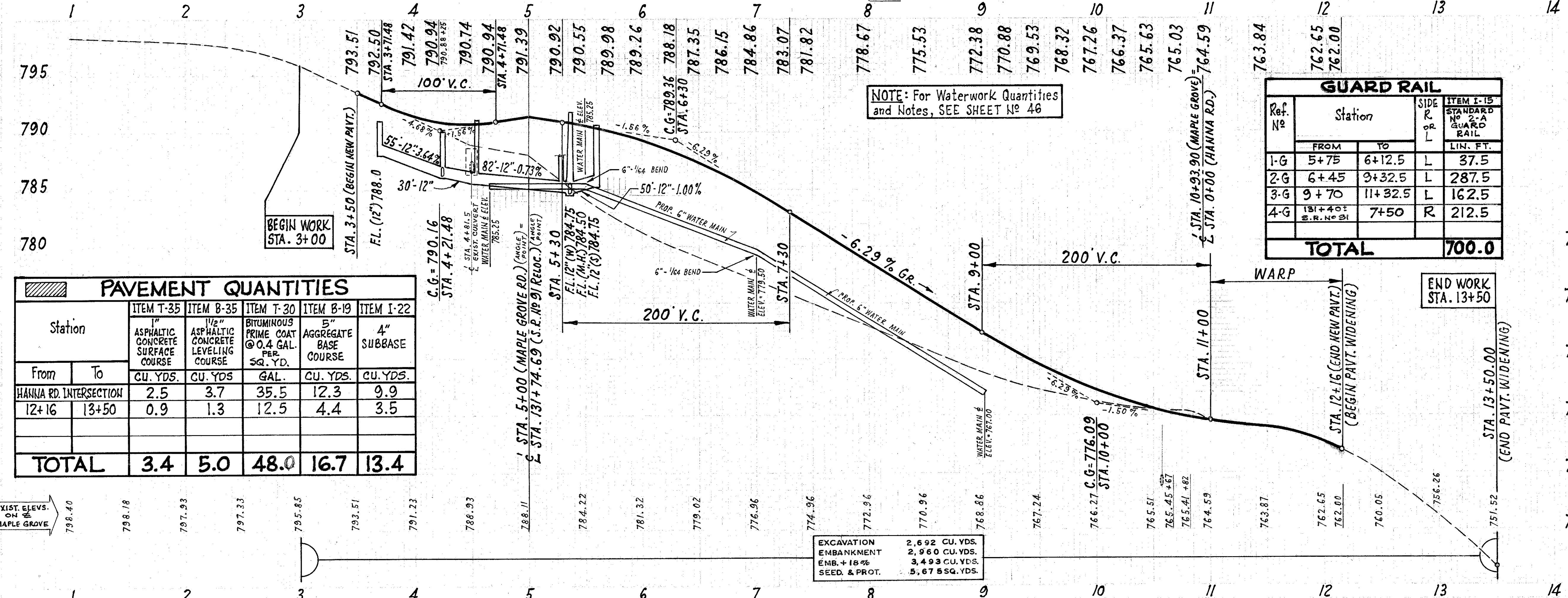
LENGTH OF WORK -
MAPLE GROVE ROAD
STA. 3+00.00 TO STA. 4+72.00 - 172.00 L.F.
STA. 5+28.00 TO STA. 13+50.00 - 822.00 L.F.
NET LENGTH OF WORK - 994.00 L.F.

B.M. # 10 - SPIKE IN ROOT OF 24" MAPLE, STA. 132+15 (35' L)
@ N.W. COR. MAPLE GROVE RD. # SR # 91 RELOC. ELEV. = 790.800



S.R. # 91 RELOC. CURVE DATA

DC = 1° 00' 00"
R = 5729.58'
Δ = 3° 20' 30"
T = 167.13'
L = 334.17'
Ch = 334.12'
E = 2.44'



Station	PAVEMENT QUANTITIES				
	ITEM T-35 1" ASPHALTIC CONCRETE SURFACE COURSE	ITEM B-35 1 1/2" ASPHALTIC CONCRETE LEVELING COURSE	ITEM T-30 BITUMINOUS PRIME COAT @ 0.4 GAL. PER SQ. YD.	ITEM B-19 5" AGGREGATE BASE COURSE	ITEM I-22 4" SUBBASE
From To	CU. YDS.	CU. YDS.	GAL.	CU. YDS.	CU. YDS.
HANNA RD. INTERSECTION 12+16 13+50	2.5	3.7	35.5	12.3	9.9
TOTAL	3.4	5.0	48.0	16.7	13.4

Ref. No	Station		SIDE R. OR L.	ITEM I-15 STANDARD NO. GUARD RAIL
	FROM	TO		
1-G	5+75	6+12.5	L	37.5
2-G	6+45	9+32.5	L	287.5
3-G	9+70	11+32.5	L	162.5
4-G	13+40 ± S.R. # 91	7+50	R	212.5
TOTAL				700.0

EXCAVATION	2,692 CU. YDS.
EMBANKMENT	2,960 CU. YDS.
EMB. + 18%	3,493 CU. YDS.
SEED. & PROT.	5,675 SQ. YDS.

Ref. No	Station	ITEM I-1 LIN. FT.		ITEM I-1 CLASS	ITEM I-8 STD. NO. 3-A C.B.	ITEM I-5 CLASS E-1 PIPE 12" WYE	ITEM I-16 C&G	ITEM I-10 SODDING	ITEM I-9 NO. 2 STONE UNDERDRAINS
		TO	FROM						
1-S	4+20	4+25	38	J-1	1				
2-S	3+70	5+26	82	D-1	2				
3-S	5+60	12+30	50	E-1	1				
4-S	4+47	13+50	9						
5-S	8+00	10+53	8						
6-S	10+60 ±	10+68 ±	8						
	3+75	13+50	9						
TOTAL		110	63	80	9	3	1	1	230

PLAN & PROFILE .. MAPLE GROVE ROAD .. STA. 1+00 to STA. 14+00