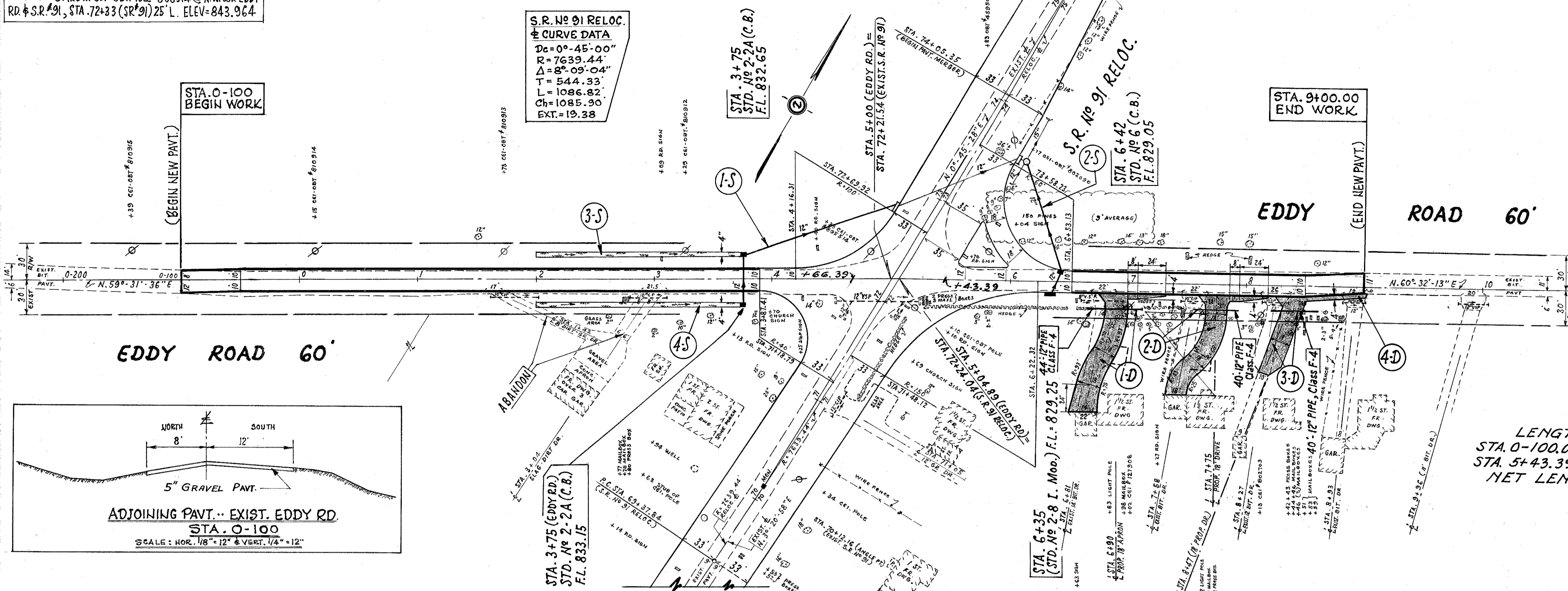
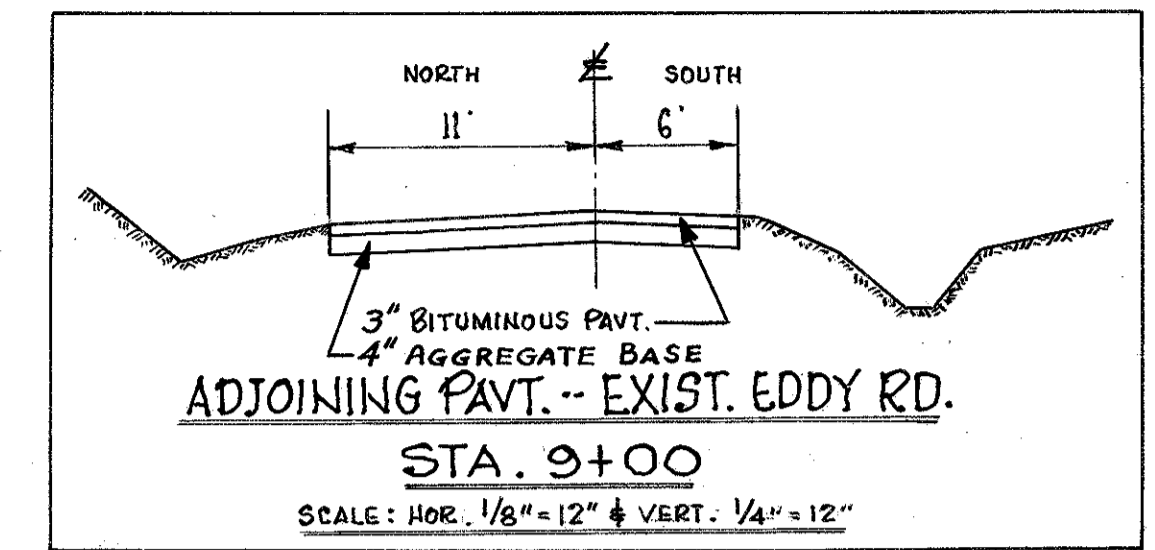
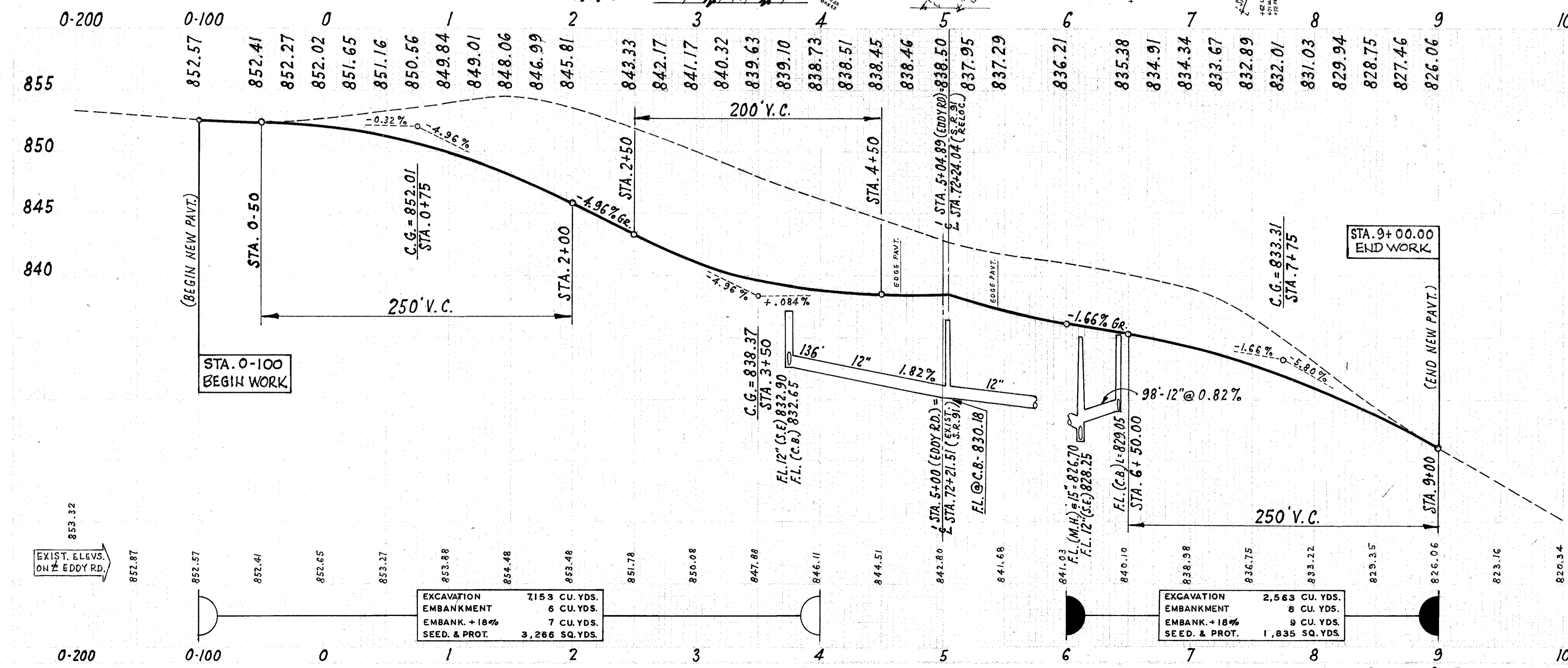


B.M. # 4 - SPIKE IN CEI. DBT. POLE # 808514 @ N.W. COR. EDDY RD. & S.R. # 91, STA. 72+33 (S.R. # 91) 25' L. ELEV. = 843.964

LAKE COUNTY
Sec. LAK. 91-(0.00)-(2.38)



LENGTH OF WORK-EDDY ROAD
STA. 0-100.00 TO STA. 4+66.39 - 566.39 LIN. FT.
STA. 5+43.39 TO STA. 9+00.00 - 356.61 LIN. FT.
NET LENGTH OF WORK - 923.00 LIN. FT.



EXCAVATION	7153 CU. YDS.
EMBANKMENT	6 CU. YDS.
EMBANK. + 18%	7 CU. YDS.
SEED. & PROT.	3,266 SQ. YDS.

EXCAVATION	2,563 CU. YDS.
EMBANKMENT	8 CU. YDS.
EMBANK. + 18%	9 CU. YDS.
SEED. & PROT.	1,835 SQ. YDS.

Ref. No	ITEM 1-1		ITEM 1-8		TOTAL
	Class	Class	STD. No	STD. No	
	12" PIPE	12" PIPE	2-2A C.B. MOD.	2-8 C.B.	
1-S	42	136	2	1	
2-S	20	98		1	
3-S					78
4-S					78
					208
TOTAL	62	234	2	1	156
					208

PLAN & PROFILE - EDDY ROAD - STA. 0-200 to STA. 10+00