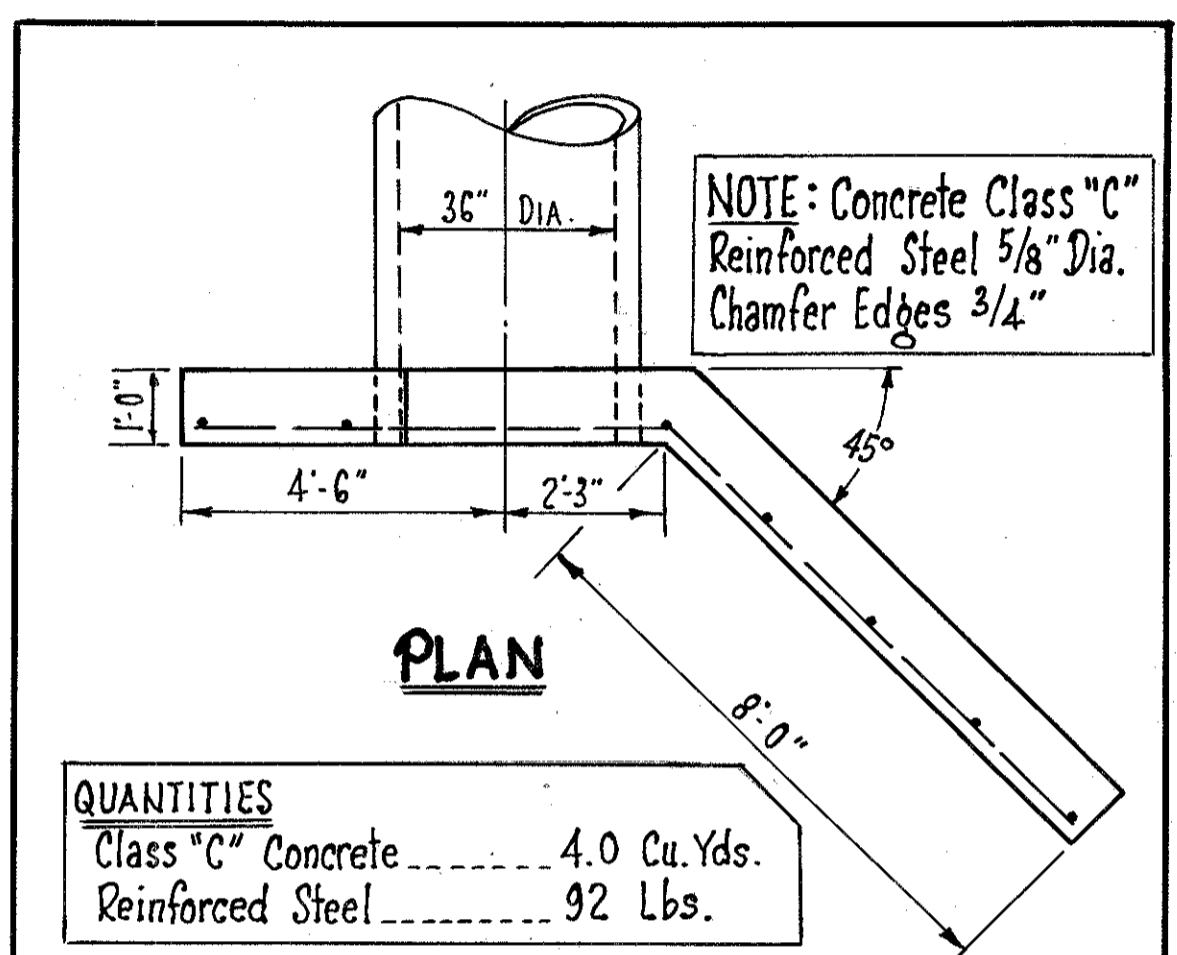
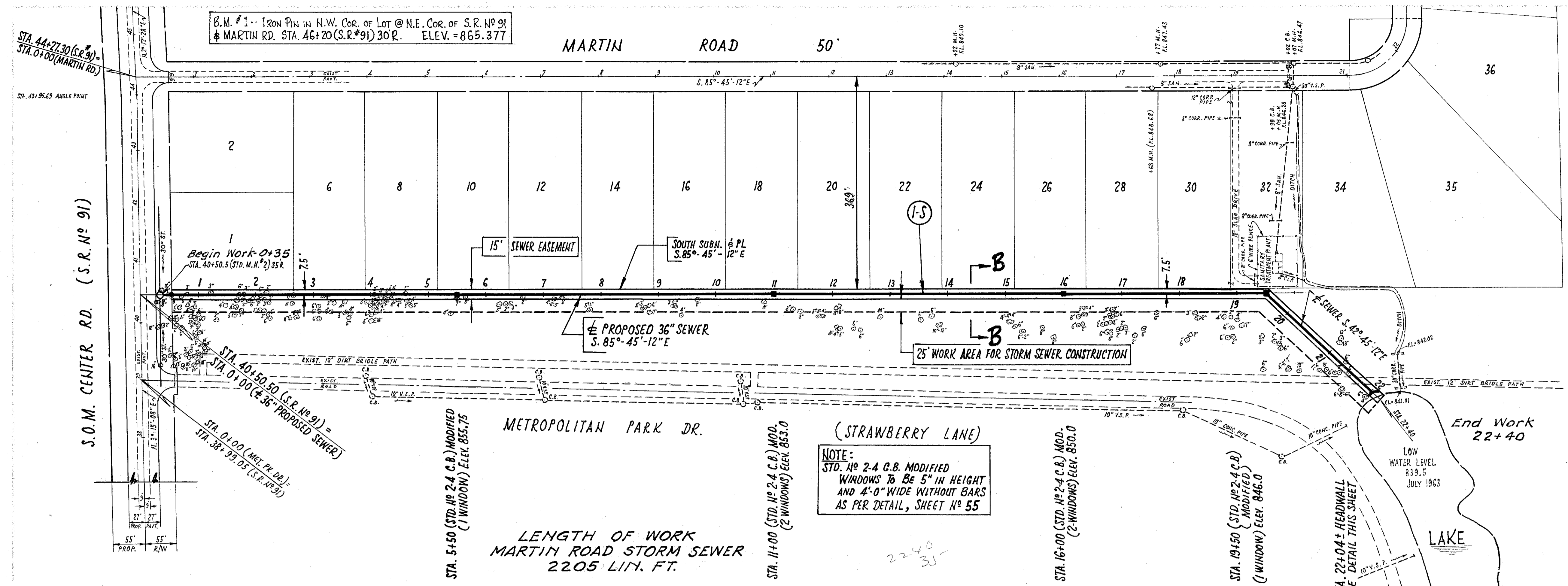
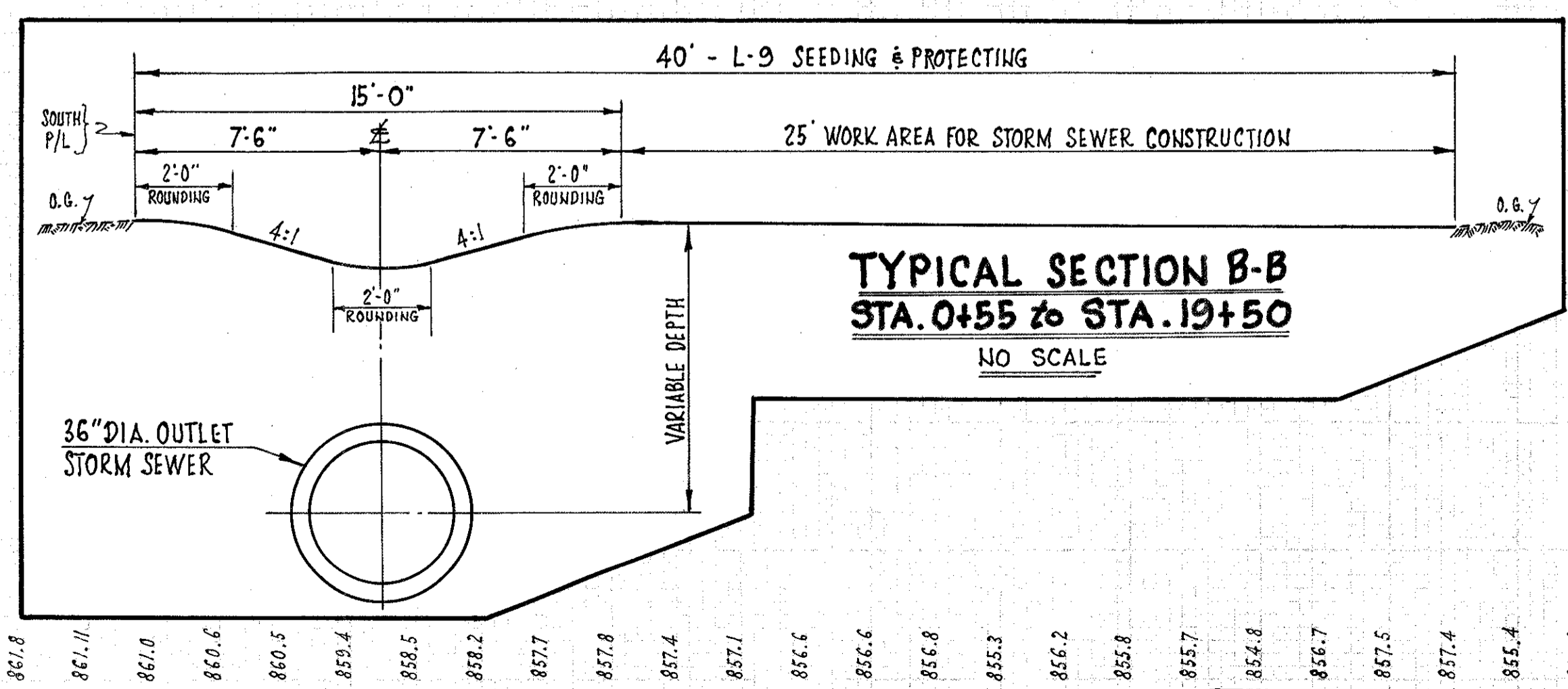
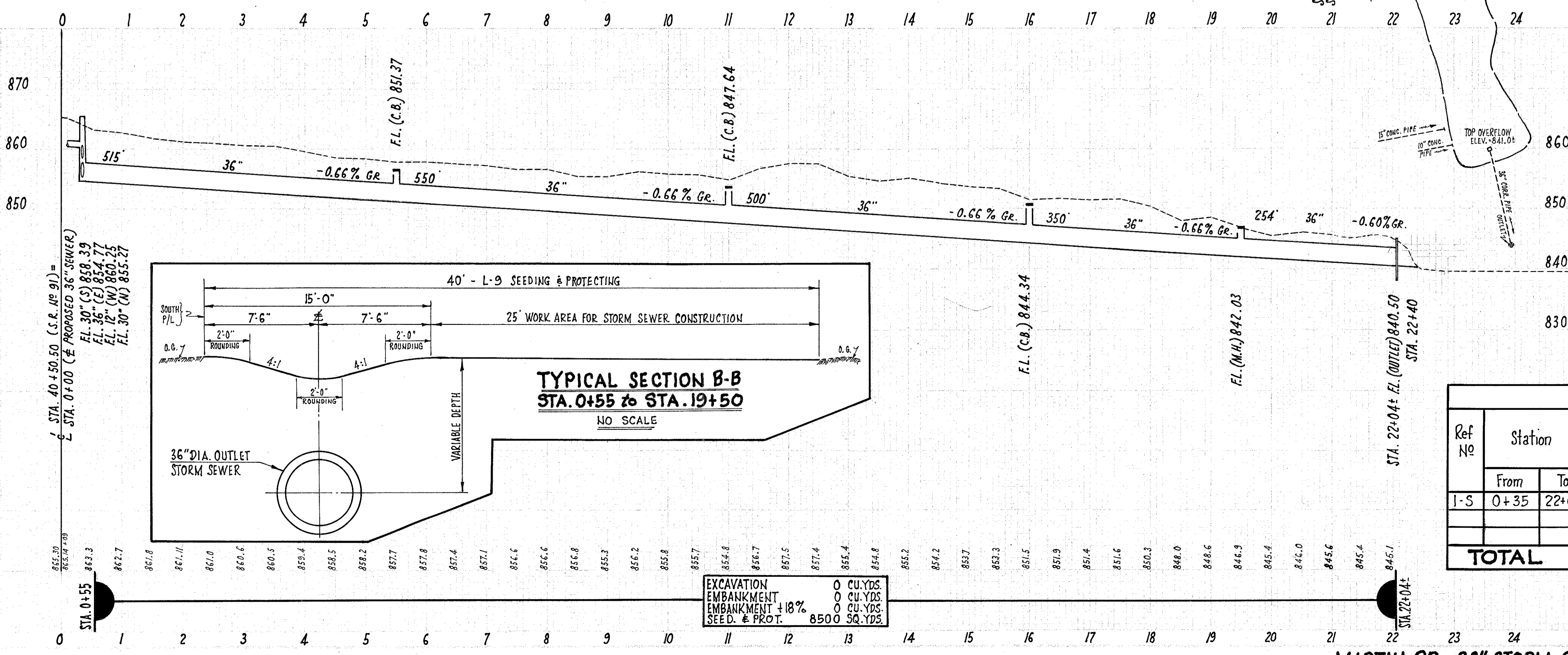
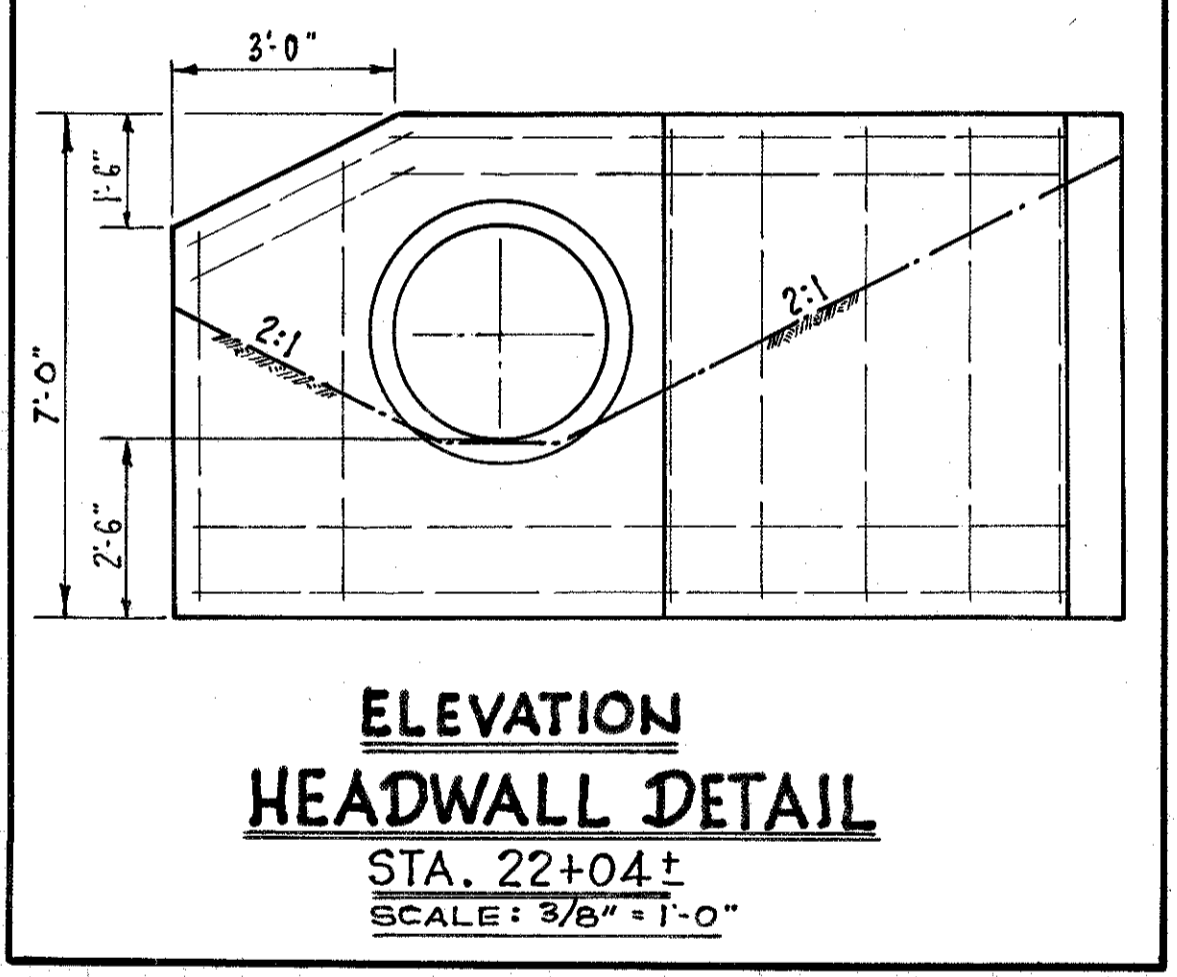


LAKE COUNTY  
Sec. LAK-91-(0.00)-(2.38)  
Scale: 1"=100'



QUANTITIES

Class "C" Concrete	4.0 Cu. Yds.
Reinforced Steel	92 Lbs.



EXCAVATION	0 CU. YDS.
EMBANKMENT	0 CU. YDS.
SEED. & PROT.	8500 SQ. YDS.

STORM SEWER						
Ref No	Station		ITEM I-1	ITEM I-8	ITEM I-2	ITEM E-3
	From	To	36" PIPE Class E-1	STD. NO 2-4 C.B. MODIFIED	MASONRY	CHANNEL EXCAVATION
			LIN. FT.	EACH	CU. YDS.	CU. YDS.
I-S	0+35	22+04±	2169	4	4.0	20
<b>TOTAL</b>			<b>2169</b>	<b>4</b>	<b>4.0</b>	<b>20</b>

MARTIN RD. - 36" STORM SEWER ... STA. 40+50.50 (S.R. NO 91)