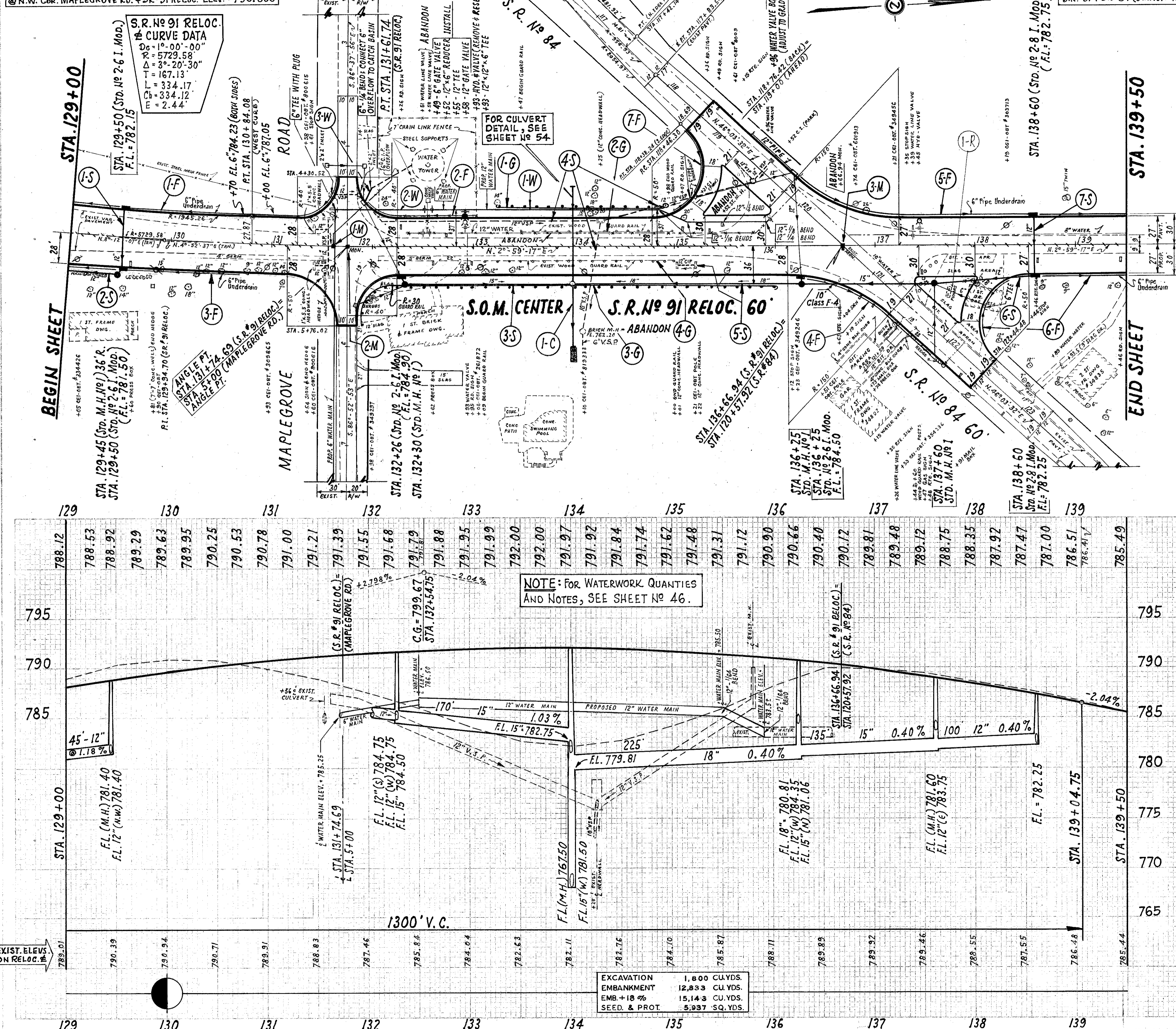


B.M.#10 - SPIKE IN ROOT OF 24" MAPLE, STA. 132+15 (35' L)
 @ N.W. COR. MAPLEGROVE RD. & SR#91 RELOC. ELEV. = 790.800

LAKE COUNTY
 Sec. LAK-91-(0.00)-(2.38)



6" UNDERDRAINS

Ref. No	Station	Side R or L	ITEM I-1				ITEM I-5	ITEM I-1
			6" PIPE Class I-3 (DEEP)	6" PIPE Class I-3 (SHALLOW)	6" PIPE Class J-1 Sec. M-6.6(b) M-6.8(b)	6" PIPE Class F-4		
1-F	129+00	L	154	112			10	
2-F	133+00	L	100				10	
3-F	129+00	R	155				10	
4-F	136+30	R		130	10		10	
5-F	139+50	L	314				10	
6-F	139+50	R	162		55	1		
7-F	135+00	L		85			20	
TOTAL			785	427	55	10	1	70

ITEM I-9 - STONE UNDERDRAINS No 2
 STA. (LEFT) 133+10; 133+90; 134+40 & 134+90.
 STA. (RIGHT) 131+00; 131+50; 132+00; 132+50; 133+00;
 134+00; 134+50; 135+00; 135+50 & 136+00.
TOTAL QUANTITY = 220 LIN. FEET.

MONUMENTS

Ref. No	Station	Loc.	ITEM I-8	ITEM I-16
			STANDARD MONUMENT ASSEMBLY EACH	MONUMENT ASSEMBLY ABANDONED EACH
1-M	PT. 131+61.74		1	
2-M	131+74.69		1	
3-M	136+66.94		1	
TOTAL			3	1

STORM SEWERS

Ref. No	Station	Class	Diameter	Length	ITEM I-1		ITEM I-8	ITEM I-16	Special
					Class J-1 PIPE	Class E-1 PIPE			
1-S	129+45	12"	15"	58	2	2	4		
2-S	129+00	12"	15"	45	1	1	4		
3-S	132+26	12"	15"	8	1	1	2		
4-S	132+00	12"	15"	7	2	2	4		
5-S	134+00	12"	15"	100	1	1	4		
6-S	137+60	12"	15"	56	1	1	4		
7-S	138+60	12"	15"	56	1	1	4		
I-R	137+60						2		Lamp
TOTAL				214	135	68	170	225	

TRAFFIC DIVIDERS

Station	ITEM I-23
129+06	41
132+02	62
137+72	15
TOTAL	118

GUARD RAIL

Ref. No	Station	Side R or L	ITEM I-15		TOTAL
			Standard No 2-A	Removal of Existing Guard Rail	
1-G	133+25	L	162.5	151	
2-G	133+47	L	437.5	191	
3-G	136+00	R			
4-G	133+09	R			
TOTAL			600.0	342	

EXCAVATION 1,800 CU.YDS.
 EMBANKMENT 12,833 CU.YDS.
 EMB.+18% 15,143 CU.YDS.
 SEED. & PROT. 5,937 SQ.YDS.

PLAN & PROFILE ... S.R. No 91 RELOC. ... STA. 129+00 to STA. 139+50