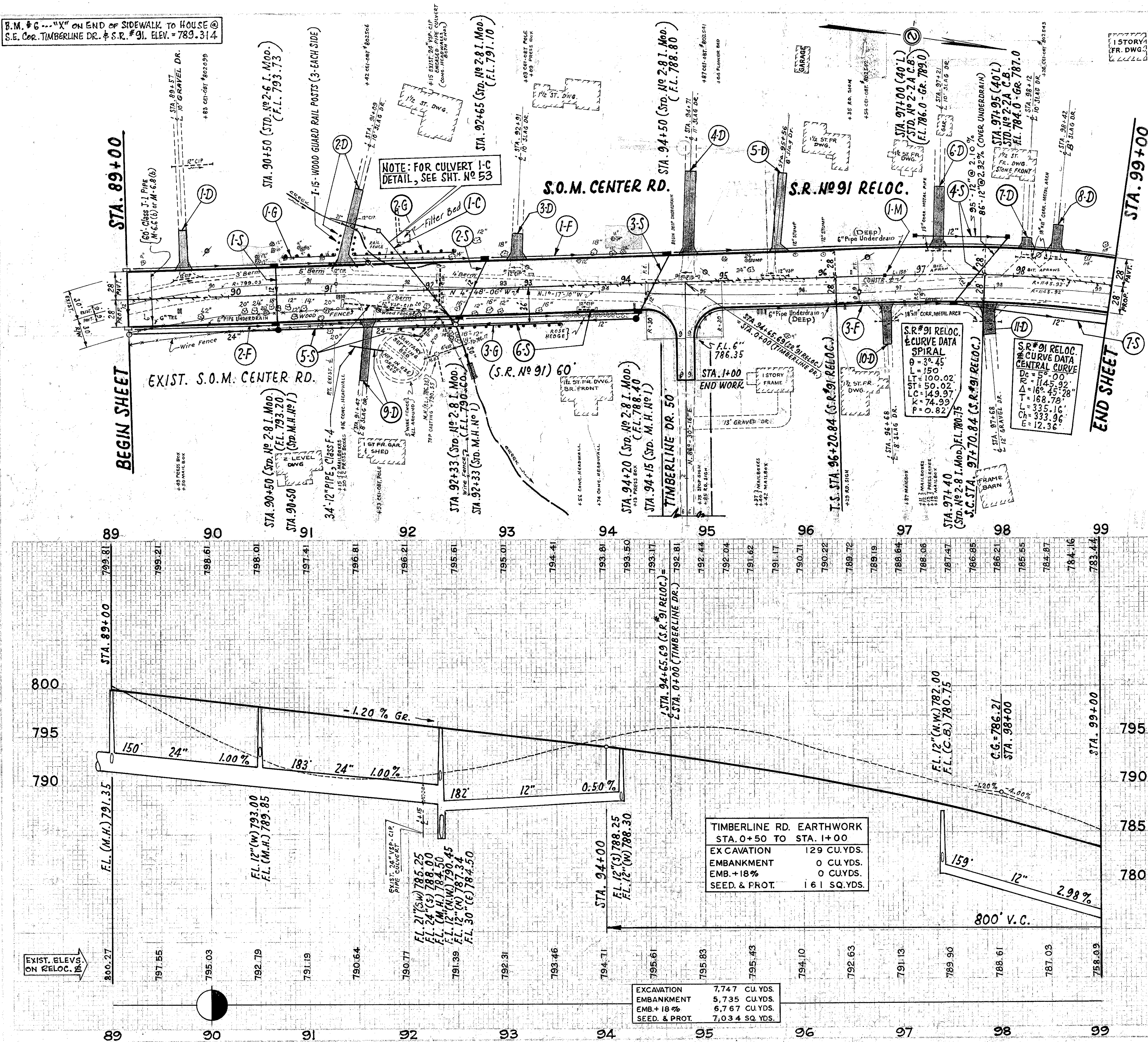


B.M. # 6 --- "X" ON END OF SIDEWALK TO HOUSE @ S.E. COR. TIMBERLINE DR. & S.R. # 91. ELEV. = 789.314

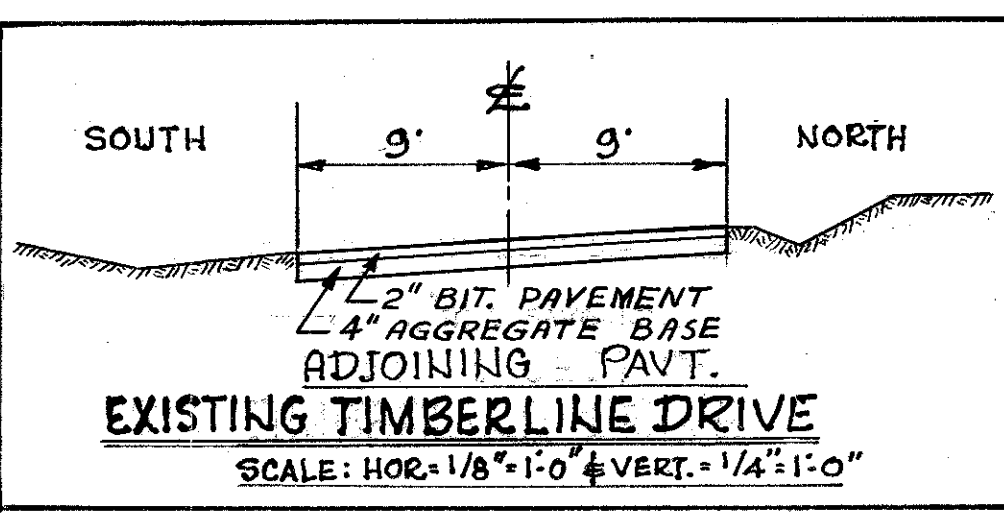
LAKE COUNTY  
LAK. - 91-(0.00)-(2.38)



### MONUMENTS

Ref. No	Station	Loc.	ITEM I-8 STANDARD MONUMENT ASSEMBLY EACH
1-M	P.C. 96+70.84	R/W	1
<b>TOTAL</b>			<b>1</b>

FOR R/W & CURVE DATA, SEE SHEET NO 138



### 6" UNDERDRAINS

REF. No	STATION	SIDE OR L	ITEM I-1				
			6" PIPE Class I-3 (SHALLOW) LIN. FT.	6" PIPE Class I-3 (DEEP) LIN. FT.	6" PIPE Class J-1 Sec. M-6.6(b) M-6.8(b) EACH	6" PIPE SPECIAL Class J-1 Sec. M-6.6(b) M-6.8(b) EACH	6" OUTLET PIPE Class F-4 LIN. FT.
1-F	89+00	99+00	L	502	444		30
2-F	89+00	94+20	R	472		60	30
3-F	90+50	99+00	R		424		10
<b>TOTAL</b>				<b>974</b>	<b>868</b>	<b>60</b>	<b>70</b>

### STORM SEWERS

REF. No	STATION	CLASS	PIPE	ITEM I-1		ITEM I-8		TOTAL
				12" EACH	8" EACH	STD. No 2-8	STD. No 2-6	
1-S	90+50	Class E-1	12"	7		1		7
2-S	92+33	Class E-1	12"	8		2		10
3-S	94+20	Class E-1	12"	8		1		9
4-S	97+00	Class E-1	12"	86				86
5-S	89+00	Class E-1	12"	182				182
6-S	92+33	Class E-1	12"	159				159
7-S	97+40	Class E-1	12"					
<b>TOTAL</b>				<b>272</b>		<b>6</b>	<b>2</b>	<b>280</b>

### TRAFFIC DIVIDERS

Station	FROM	TO	ITEM I-23
			PRECAST WHITE PORTLAND CEMENT TRAFFIC DIVIDERS EACH
89+05	94+45		91
94+91	98+99		69
<b>TOTAL</b>			<b>160</b>

### GUARD RAIL

Ref. No	Station	SIDE OR L	ITEM I-15
			STANDARD No. 2-A GUARD RAIL LIN. FT.
1-G	90+60	91+10	L 50.0
2-G	91+30	92+30	L 100.0
3-G	91+75	93+37.5	R 162.5
<b>TOTAL</b>			<b>312.5</b>