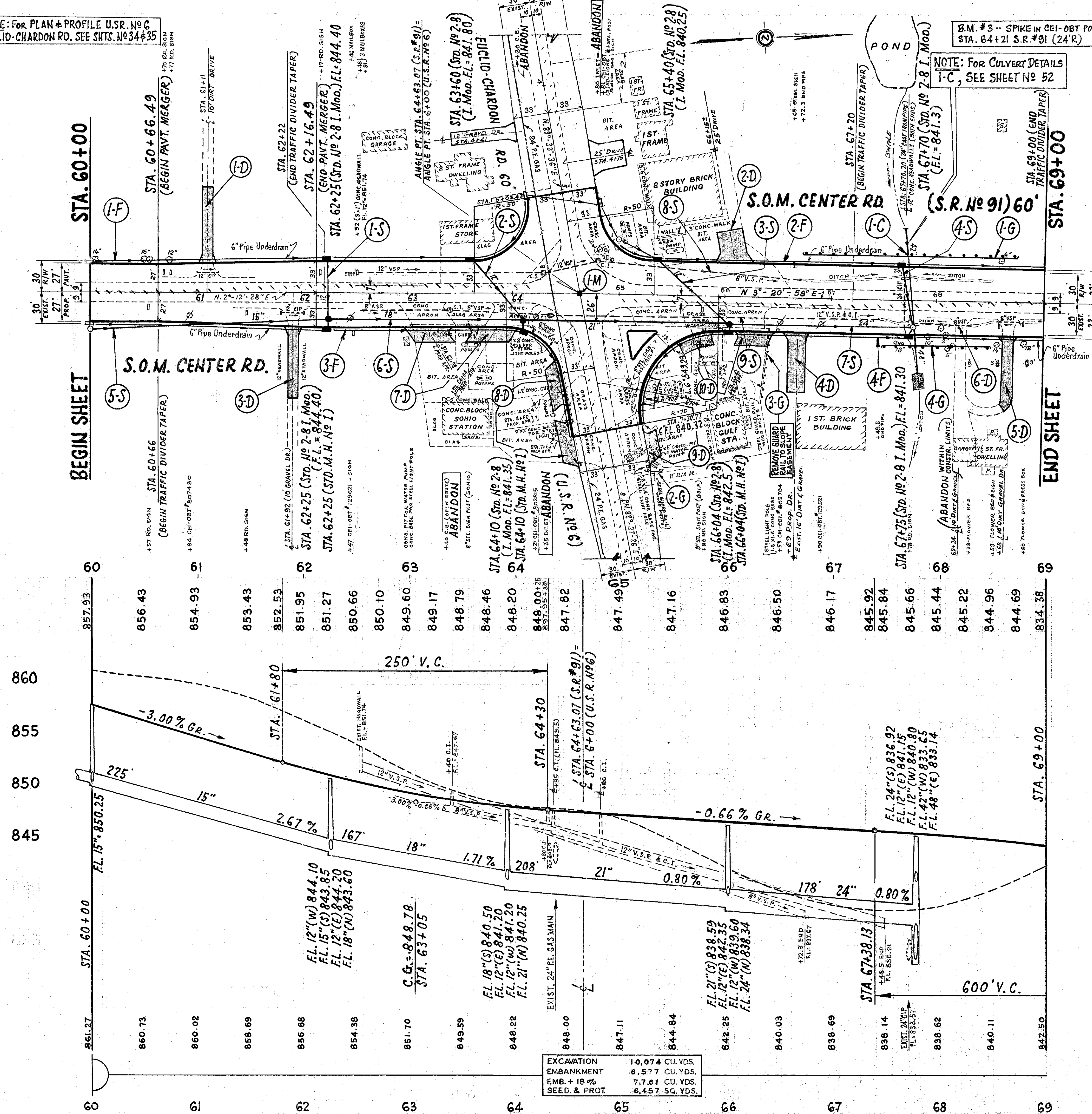


NOTE: For PLAN & PROFILE U.S.R. No 6
EUCLID-CHARDON RD. SEE SHTS. No 34 & 35

LAKE COUNTY
LAK 91 (0.00)-(2.38)

24
146



Ø.M. #3 - SPIKE IN CEI-OBT POLE, S.E. COR. S.R.#91 & U.S.R.#6
ELEV. = 849.038

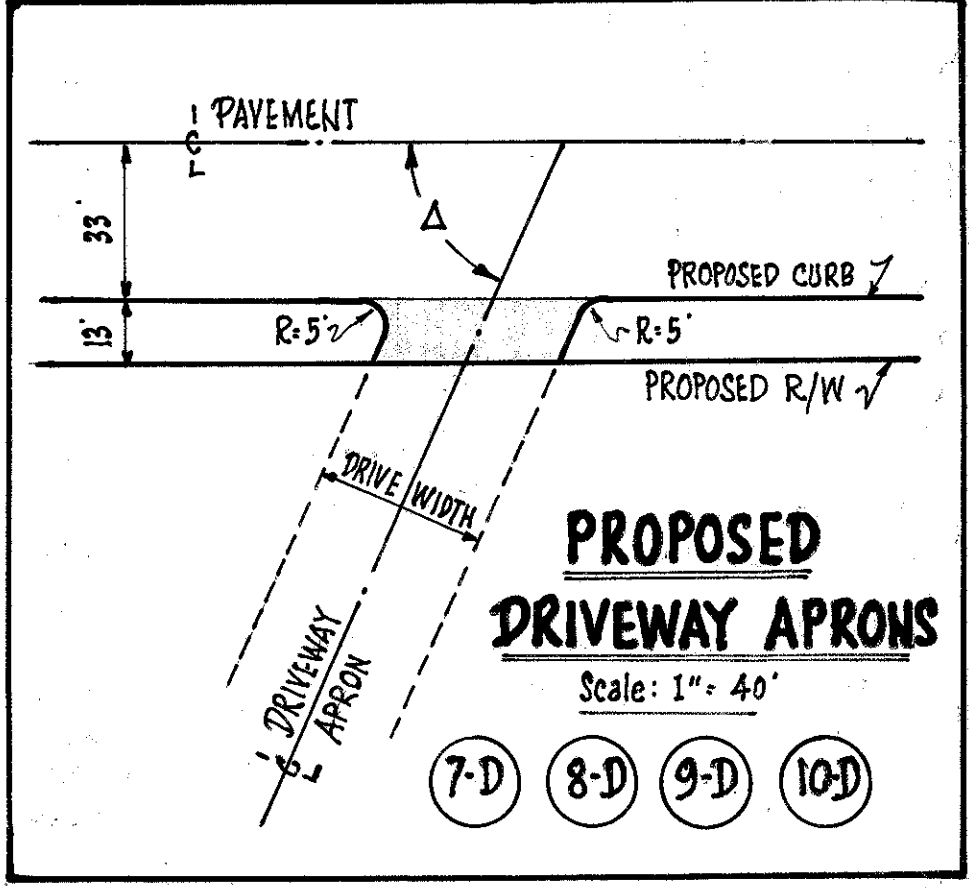
NOTE: FOR CULVERT DETAILS
I-C, SEE SHEET No 52

STORM SEWERS											
REF. No	STATION	ITEM I-1 ... LIN. FEET					ITEM I-8			ITEM E-12	
		Class J-1 Pipe					STD. No 1	STD. No 2-8 I MOD	C.B. ABANDON	PIPE REMOVAL	
		12"	15"	18"	21"	24"				15" & UNDER	PIPE REMOVAL
FROM	TO					EACH	EACH	EACH	8"	12"	
1-S	62+25	68					2				
2-S	63+60	64+10	86				2				
3-S	65+40	66+04	96				2				
4-S	67+70	67+78	70				2				
5-S	60+04	62+25	225								
6-S	62+25	66+04		167	208		2				
7-S	66+00	67+78			178		1				
8-S	64+00	66+72						2	190	82	
9-S	63+40	67+50						2	94	310	
TOTAL		320	225	167	208	178	3	8	4	284	392

6" UNDERDRAINS						
REF. No	STATION	SIDE	ITEM I-1		ITEM I-1	
			6" PIPE Class I-3 (SHALLOW)	6" PIPE Class I-3 (DEEP)	6" OUTLET PIPE Class F-4	
			LIN. FT.	LIN. FT.	LIN. FT.	
1-F	60+00	5+08.42 (U.S.R.#)	L		407	30
2-F	65+00	69+00	L	370		20
3-F	60+00	7+30.77 (U.S.R.#)	R		485	20
4-F	7+30.77 (U.S.R.#)	69+00	R	399		20
TOTAL				769	892	90

GUARD RAIL					
REF. No	Station		Side R or L	ITEM I-15	
	FROM	TO		STANDARD No 2-A GUARD RAIL LIN. FT.	REMOVAL & DISPOSAL OF EXIST. GUARD RAIL LIN. FT.
1-G	66+75	68+75	L	200.0	
2-G	7+80± (U.S.R.#)		L		12.5
3-G	66+40±		R		37.5
4-G	67+50	68+50	R	100.0	
TOTAL				300.0	50.0

TRAFFIC DIVIDERS			
Station	ITEM I-23		EACH
	FROM	TO	
60+06	64+14	35	
65+04	69+00	34	
TOTAL		69	



MONUMENTS			
Ref. No	Station	Loc.	ITEM I-8
			MONUMENT ADJUST TO GRADE
			EACH
1-M	64+63.07	±	1
TOTAL			1

EXCAVATION	10,074 CU. YDS.
EMBANKMENT	6,577 CU. YDS.
EMB. + 18% SEED. & PROT.	7,761 CU. YDS.
	6,457 SQ. YDS.

PLAN & PROFILE .. S.R. 91 ... STA. 60+00 to STA. 69+00