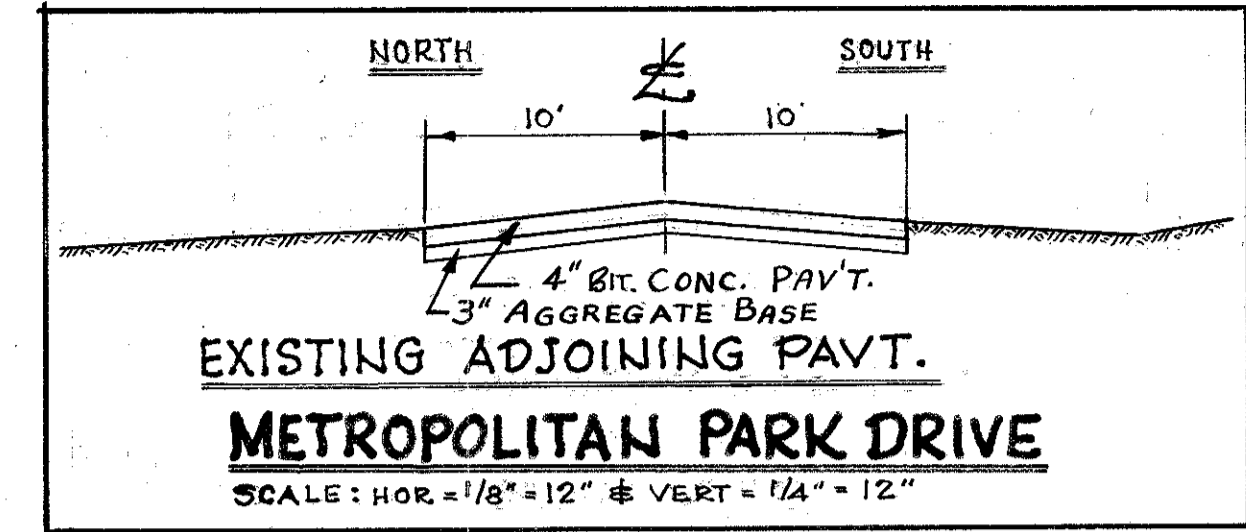
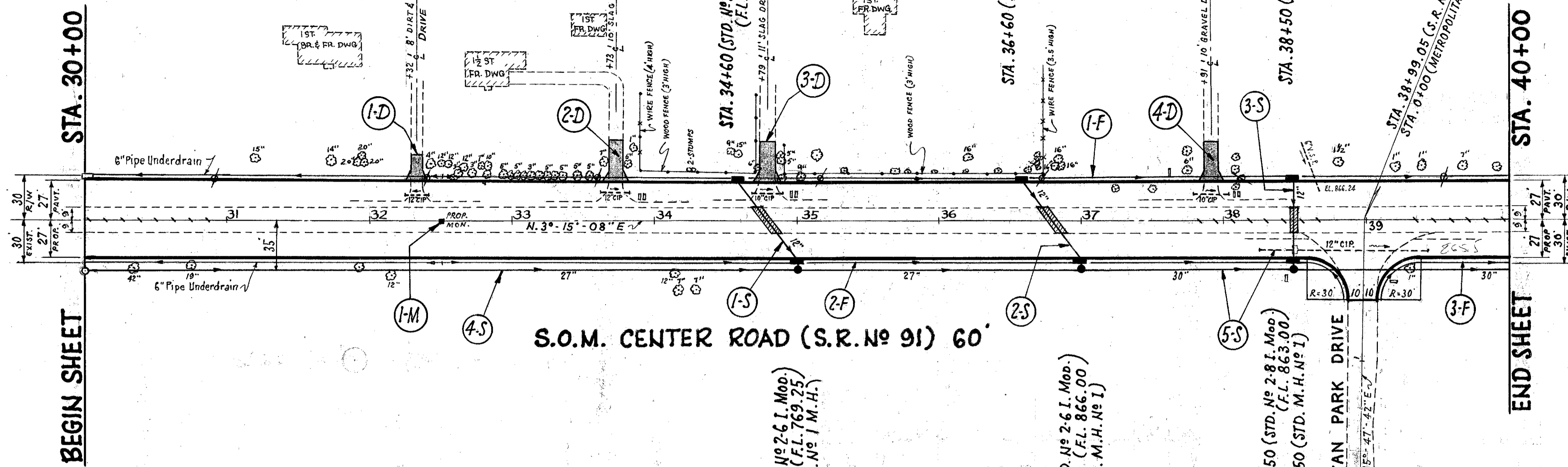


B.M. #14 - SPIKE IN CEI-OBT. POLE # 325 017
 STA. 33+60 (S.R.#91) 30' L. ELEV. = 876.747

LAKE COUNTY
 LAK-91-(0.00)-(2.38)

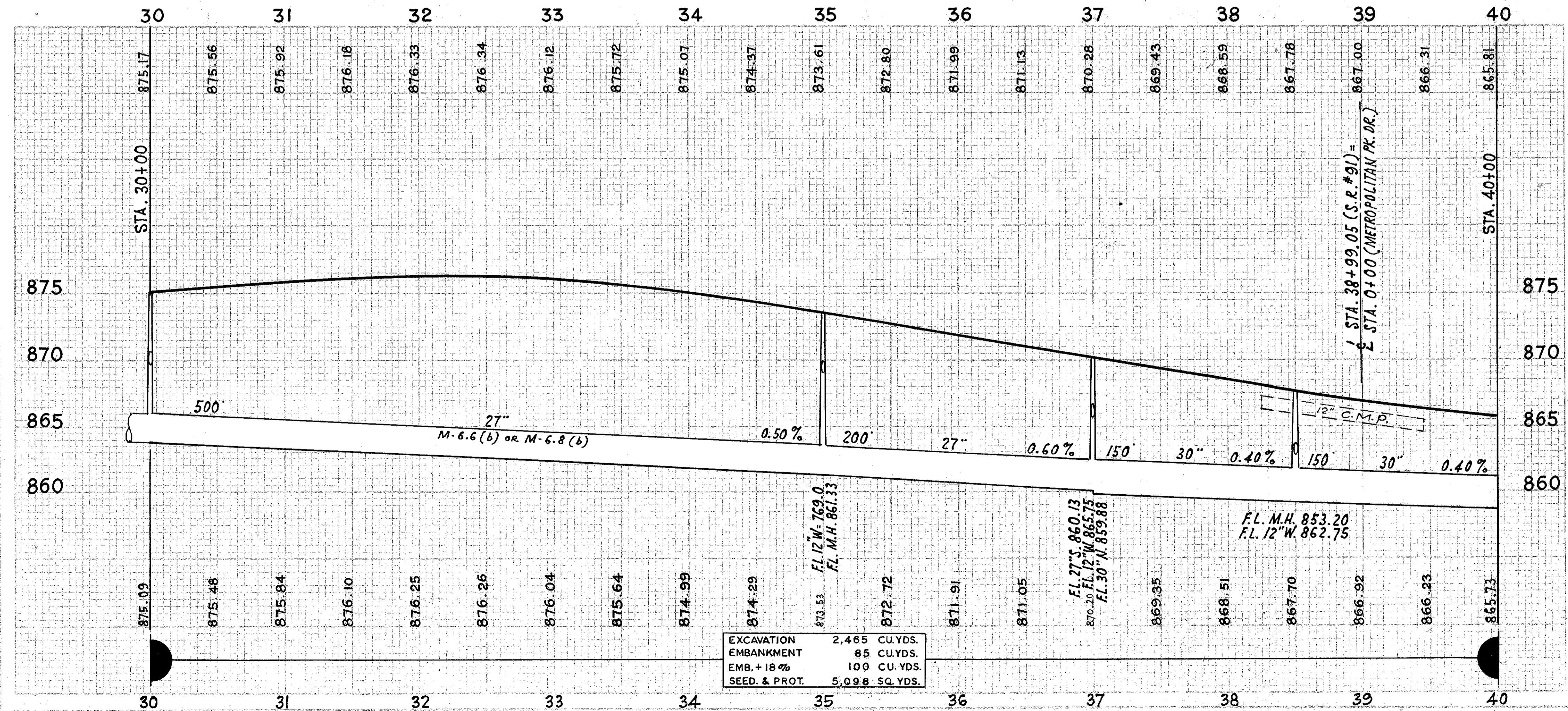
PROJECT	STATE	DIVISION
	OHIO	2

21
146



REF. No	STATION	SIDE	ITEM I-1		
			6" PIPE Class I-3 SHALLOW	6" OUTLET PIPE Class F-4	
	FROM TO		LIN. FT.	LIN. FT.	
1-F	30+00	40+00	L	942	40
2-F	30+00	35+00	R	848	40
3-F	35+00	40+00	R	105	
TOTAL				1895	80

Station		ITEM I-23
FROM	TO	PRECAST WHITE PORTLAND CEMENT TRAFFIC DIVIDERS
30+02	38+66	73
39+36	39+96	6
TOTAL		79



REF. No	STATION	ITEM I-1		ITEM I-8		ITEM I-12	ITEM E-8	ITEM B-70	ITEM B-35
		Class	Length	STP. No	STP. No				
	FROM TO	12" 27" 30"	LI. FT.	2-8	8TD. M.H. No	PIPE REMOVAL	REMOVAL AND DISPOSAL OF EXISTING PAVT.	9" CONCRETE BASE COURSE	2 1/2" ASPHALTIC CONCRETE LEVELING COURSE
1-S	34+60	35+00	70	7			13	13	0.9
2-S	36+60	37+00	70	7			13	13	0.9
3-S	38+50	39+00	56	7	1		10	10	0.7
4-S	30+00	35+00	500			1	10	10	
5-S	35+00	40+00	200	300		3	13	13	
TOTAL			196	21	700	300	36	36	2.5

Station	Loc.	ITEM I-8
		STANDARD MONUMENT ASSEMBLY
32+50	±	1
TOTAL		1

EXCAVATION	2,465 CU. YDS.
EMBANKMENT	85 CU. YDS.
EMB. + 18%	100 CU. YDS.
SEED. & PROT.	5,098 SQ. YDS.