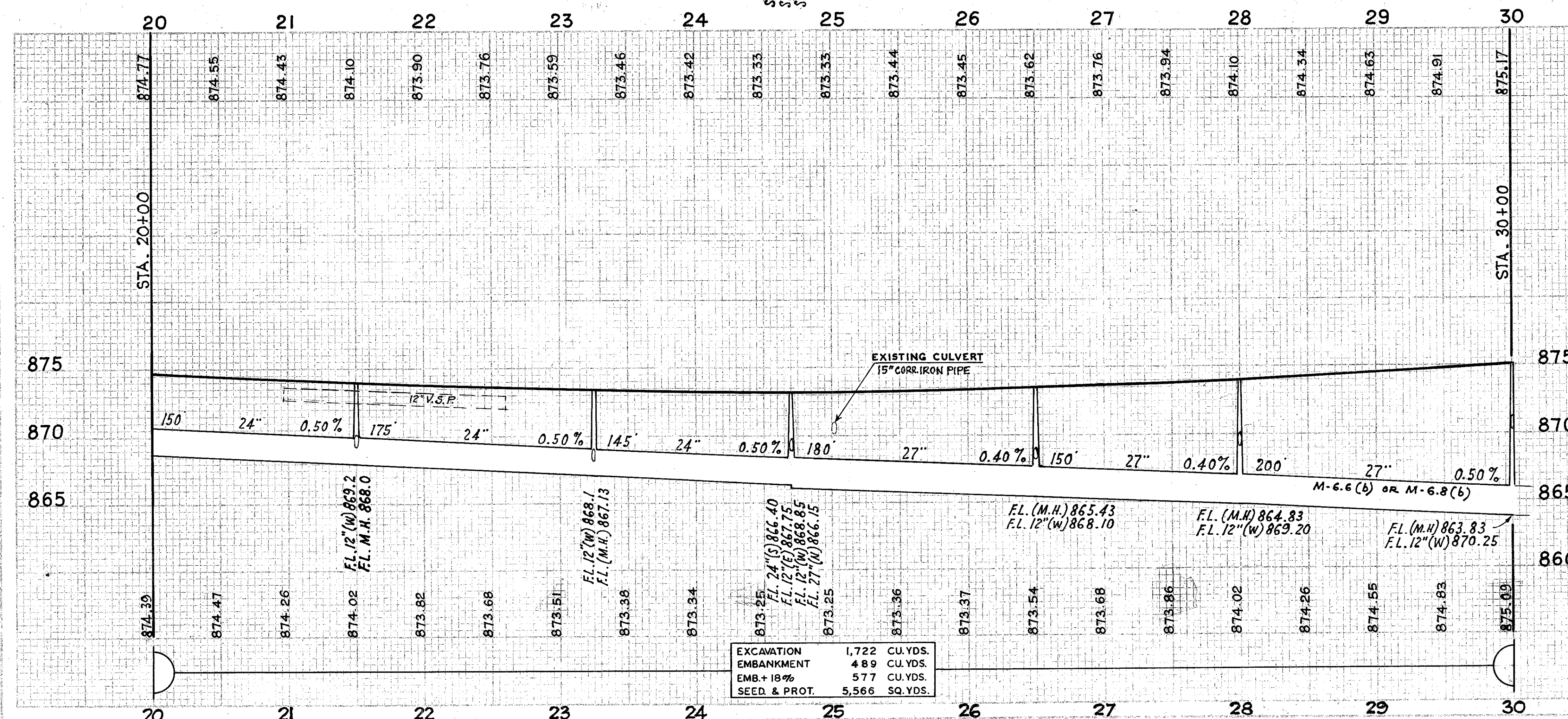
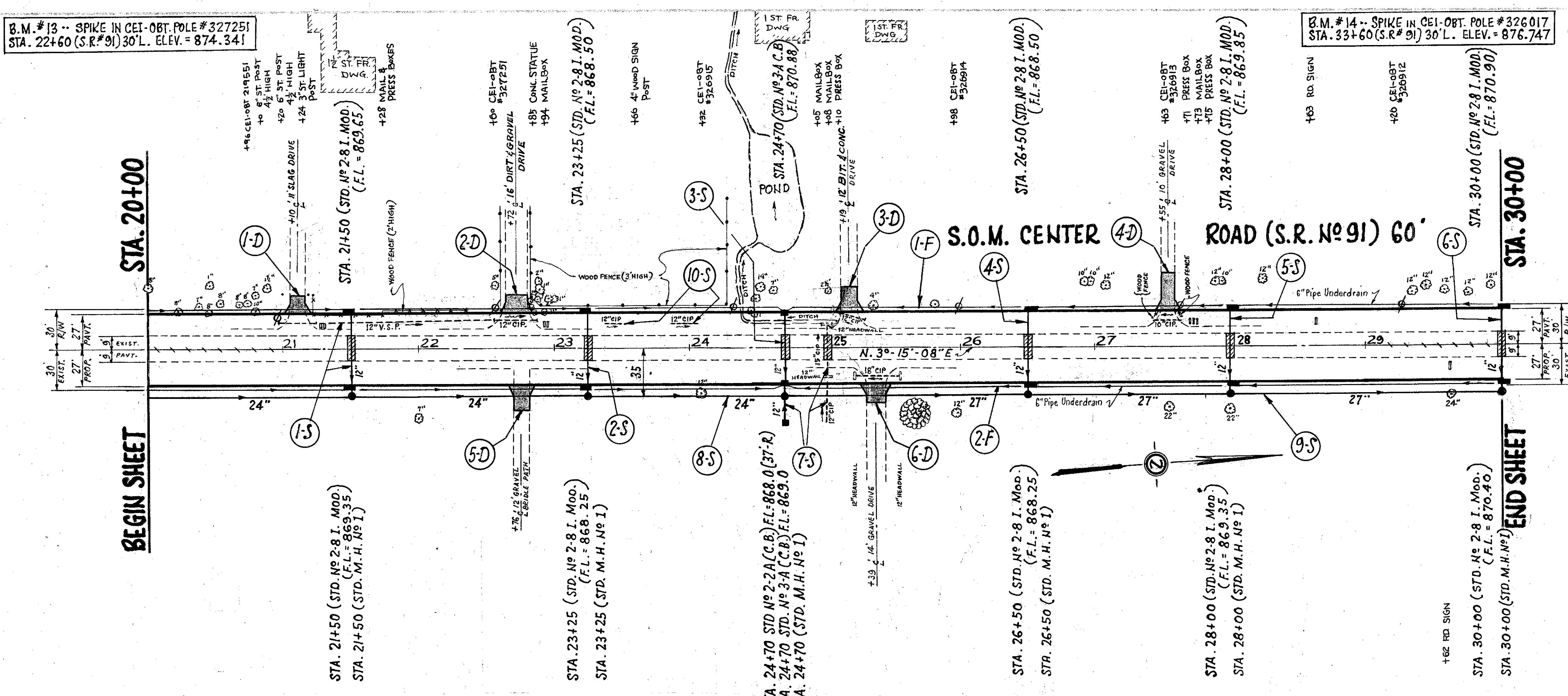


B.M. #13 -- SPIKE IN CEI-OBT. POLE #327251
 STA. 22+60 (S.R.#91) 30' L. ELEV. = 874.341

B.M. #14 -- SPIKE IN CEI-OBT. POLE #326017
 STA. 33+60 (S.R.#91) 30' L. ELEV. = 876.747

LAKE COUNTY
 LAK - 91 - (0.00) - (2.38)



EXCAVATION	1,722	CU. YDS.
EMBANKMENT	489	CU. YDS.
EMB.+ 18%	577	CU. YDS.
SEED & PROT.	5,566	SQ. YDS.

TRAFFIC DIVIDERS		
Station		ITEM I-23
FROM	TO	PRECAST WHITE PORTLAND CEMENT TRAFFIC DIVIDERS
20+06	29+90	EACH 83
TOTAL		83

6" UNDERDRAINS	
REF. NO.	STATION
1-F	20+00
2-F	20+00
TOTAL	
1820	
120	

REF. NO.	STATION	ITEM I-1 PIPE		ITEM E-12		ITEM I-8		ITEM B-70		ITEM E-8	
		Class J-1	Class E-1	PIPE REMOVAL	PIPE REMOVAL	STD. M.H. NO. 1	STD. NO. 2-8	STD. NO. 2-2A	STD. NO. 3-A	CONCRETE BASE COURSE	ASPHALTIC PORTLAND CEMENT LEVELING COURSE
1-S	20+97	12"	27"	12"	15"	2	2	10	10	10	10
2-S	23+25	56	7	193		2	2	10	10	10	10
3-S	24+70	56	7			2	2	10	10	10	10
4-S	26+50	56	7			2	2	10	10	10	10
5-S	28+00	56	7			2	2	10	10	10	10
6-S	30+00	56	7			2	2	10	10	10	10
7-S	24+70	25+02	26	30	40	1	1	10	10	10	10
8-S	20+00	24+70	470			2	4				
9-S	24+70	30+00	330	200							
10-S	23+37	24+07		32							
TOTAL		336	61	470	330	200	255	40	70	70	4.9

PLAN & PROFILE -- S.R. No 91 -- STA. 20+00 to STA. 30+00