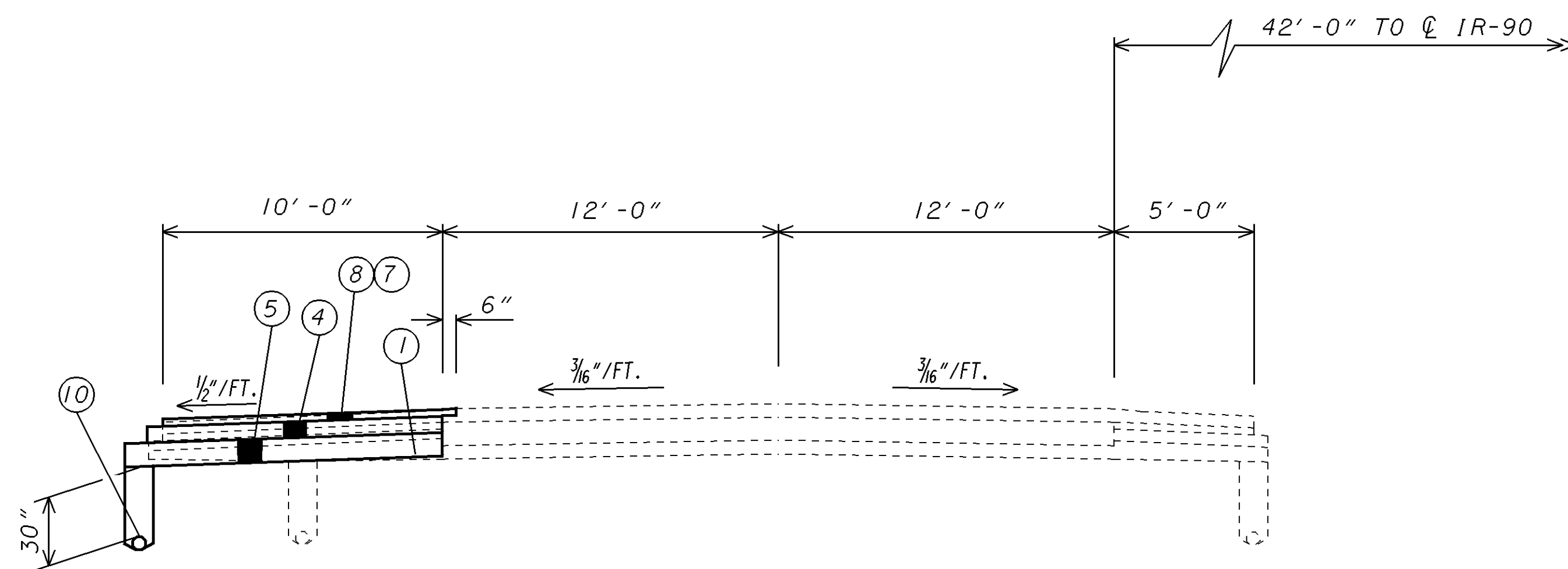


PROPOSED

- ① ITEM-203 EXCAVATION NOT INCLUDING EMBANKMENT CONSTRUCTION
- ④ ITEM-301 7" BITUMINOUS AGGREGATE BASE AC-20
- ⑤ ITEM-304 10" AGGREGATE BASE, AS PER PLAN (SEE SHEET)
- ⑦ ITEM-404 1-1/4" ASPHALT CONCRETE SURFACE COURSE, TYPE 1, AC-20, AS PER PLAN
- ⑧ ITEM-402 1-3/4" ASPHALT CONCRETE, INTERMEDIATE COURSE, TYPE 2, AC-20
- ⑩ ITEM-605 6" SHALLOW PIPE UNDERDRAIN WITH FABRIC WRAP



WESTBOUND
 STA. 824+03 TO STA. 829+83
 STA. 838+48 TO STA. 849+88

ESTIMATED QUANTITIES - OUTSIDE SHOULDER REPLACEMENT

ITEM 603 - 6" CONDUIT, TYPE F, 707.17 NON PERF. ASTM 3034, SDR 35, SS931 OR SS944.....	40 L.F.
ITEM 605 - 6" SHALLOW PIPE UNDERDRAIN WITH FABRIC WRAP.....	988 L.F.
ITEM 605 - 6" UNCLASSIFIED PIPE UNDERDRAIN WITH FABRIC WRAP.....	739 L.F.
ITEM 203 - EXCAVATION.....	1171 CY
ITEM 404 - ASPHALT CONCRETE SURFACE, TYPE 1, AC-20, AS PER PLAN....	67 CY
ITEM 402 - ASPHALT CONCRETE INTERMEDIATE COURSE, TYPE 2, AC-20....	93 CY
ITEM 301 - BITUMINOUS AGGREGATE BASE AC-20.....	395 CY
ITEM 304 - AGGREGATE BASE, AS PER PLAN.....	609 CY