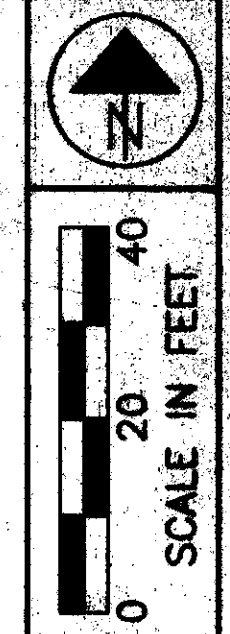


LAKE COUNTY
CITY OF MENTOR & VILLAGE OF KIRTLAND HILLS
 T = 9&10 N, R = 9 W



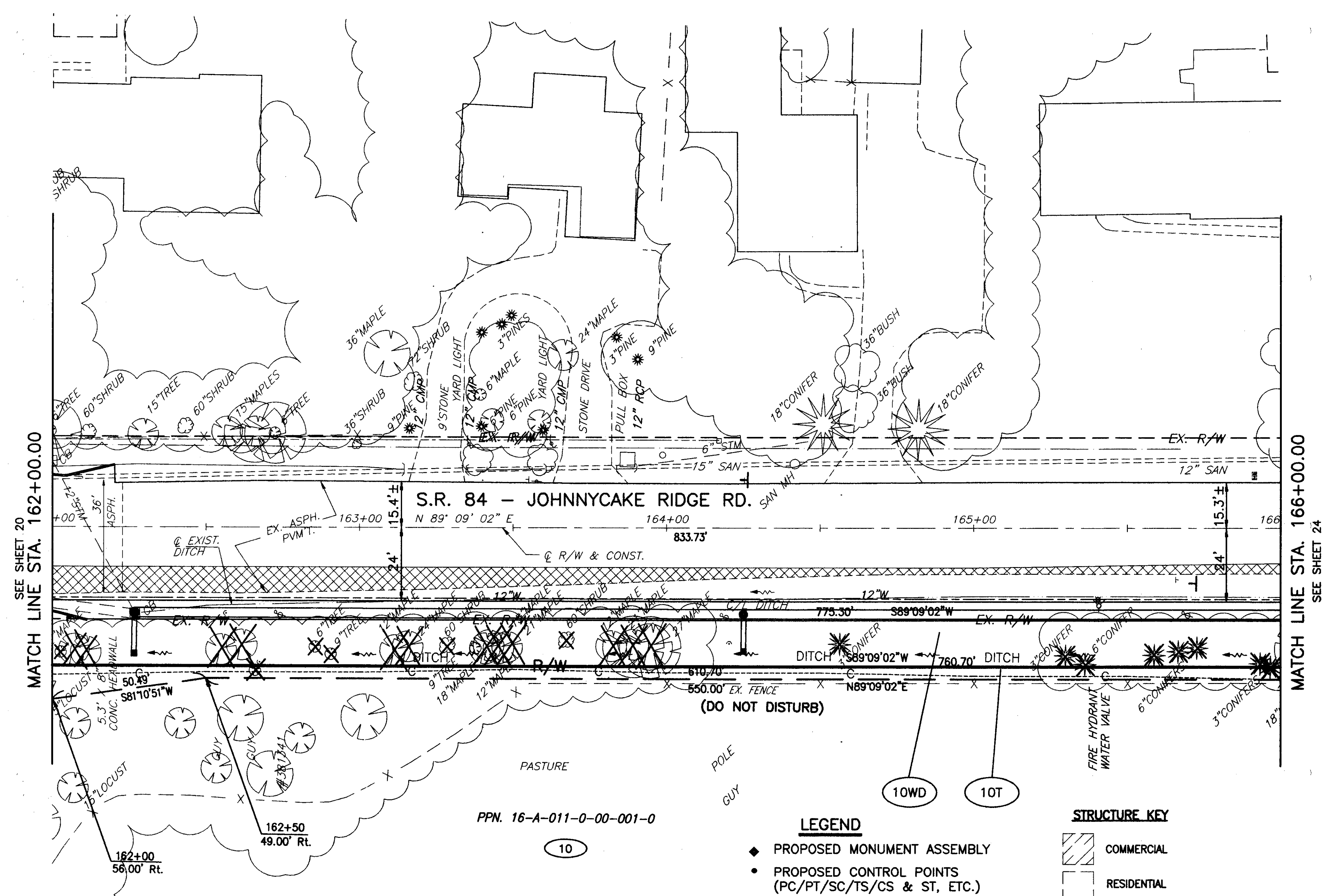
PID NO. **9331**
 R/W DESIGNER P.S.L.
 R/W REVIEWER W.D.B.

RIGHT OF WAY PLAN
 STA. 161+16.27 TO STA. 166+00.00

LAK-1R90/SR615-9.26/1.51

25/24

392A
 393



- LEGEND**
- ◆ PROPOSED MONUMENT ASSEMBLY
 - PROPOSED CONTROL POINTS (PC/PT/SC/TS/CS & ST, ETC.)
- STRUCTURE KEY**
- COMMERCIAL
 - RESIDENTIAL

ALL BEARINGS FOR THIS PROJECT ARE BASED ON THE ODOT PROJECT LAK-1-6.97 (APRIL 1960)

THE LOCATION & WIDTH OF THE EXISTING LIMITED ACCESS & RIGHT OF WAY LINES WERE ESTABLISHED USING ODOT PROJECT LAK-1-6.97 (1960) & COUNTY RECORDS.

REV	DATE	DESCRIPTION

DATE COMPLETED:

H:\CT\97125\SDSK\RW\PRRW6.dwg 08/23/2000 09:40:04 AM EDT