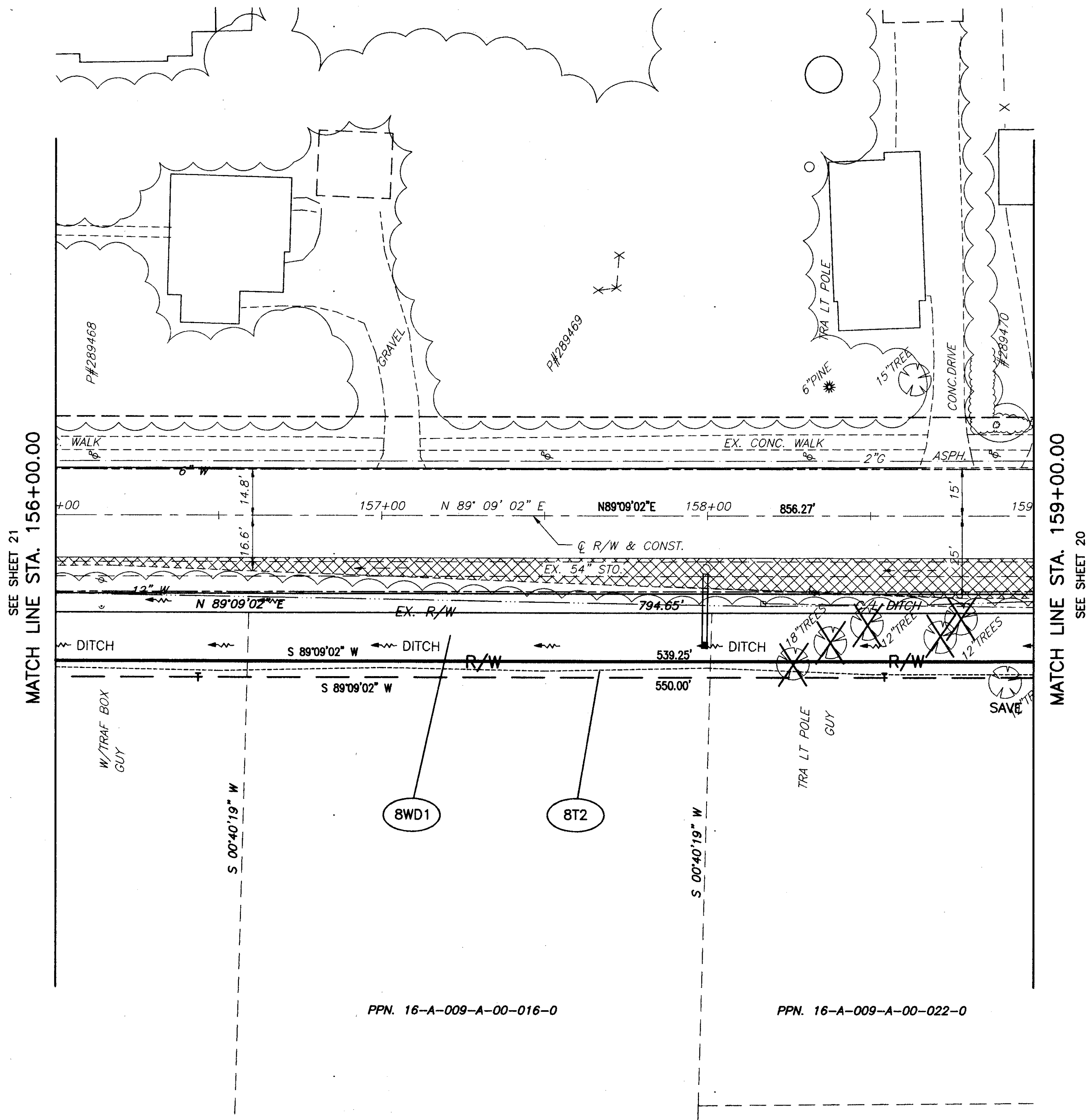


H:\CT\97125\SDSK\RW\PARCEL8.dwg 08/23/2000 10:48:00 AM EDT

LAKE COUNTY  
 CITY OF MENTOR & VILLAGE OF KIRTLAND HILLS  
 T = 9&10 N, R = 9 W





SEE SHEET 21  
 MATCH LINE STA. 156+00.00

MATCH LINE STA. 159+00.00  
 SEE SHEET 20

PPN. 16-A-009-A-00-016-0

PPN. 16-A-009-A-00-022-0

STRUCTURE KEY

-  COMMERCIAL
-  RESIDENTIAL

THE LOCATION & WIDTH OF THE EXISTING LIMITED ACCESS & RIGHT OF WAY LINES WERE ESTABLISHED USING ODOT PROJECT LAK-1-6.97 (1960) & COUNTY RECORDS.

ALL BEARINGS FOR THIS PROJECT ARE BASED ON THE ODOT PROJECT LAK-1-6.97 ( APRIL 1960 )

REV	DATE	DESCRIPTION

DATE COMPLETED:

RIGHT OF WAY PLAN  
 STA. 156+00.00 TO STA. 159+00.00

LAK-IR90/SR615-9.26/1.51

PID NO. 9331

R/W DESIGNER P.S.L.  
 R/W REVIEWER W.D.B.

22 / 24

392  
393

