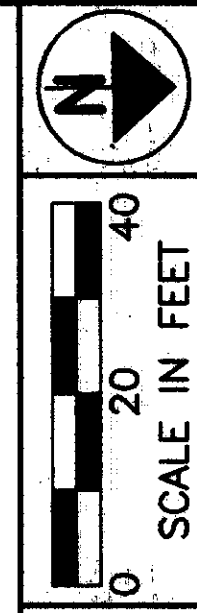


LAKE COUNTY
 CITY OF MENTOR & VILLAGE OF KIRTLAND HILLS
 T = 9 & 10 N, R = 9 W



PID NO. 9331
 R/W DESIGNER P.S.L.
 R/W REVIEWER W.D.B.

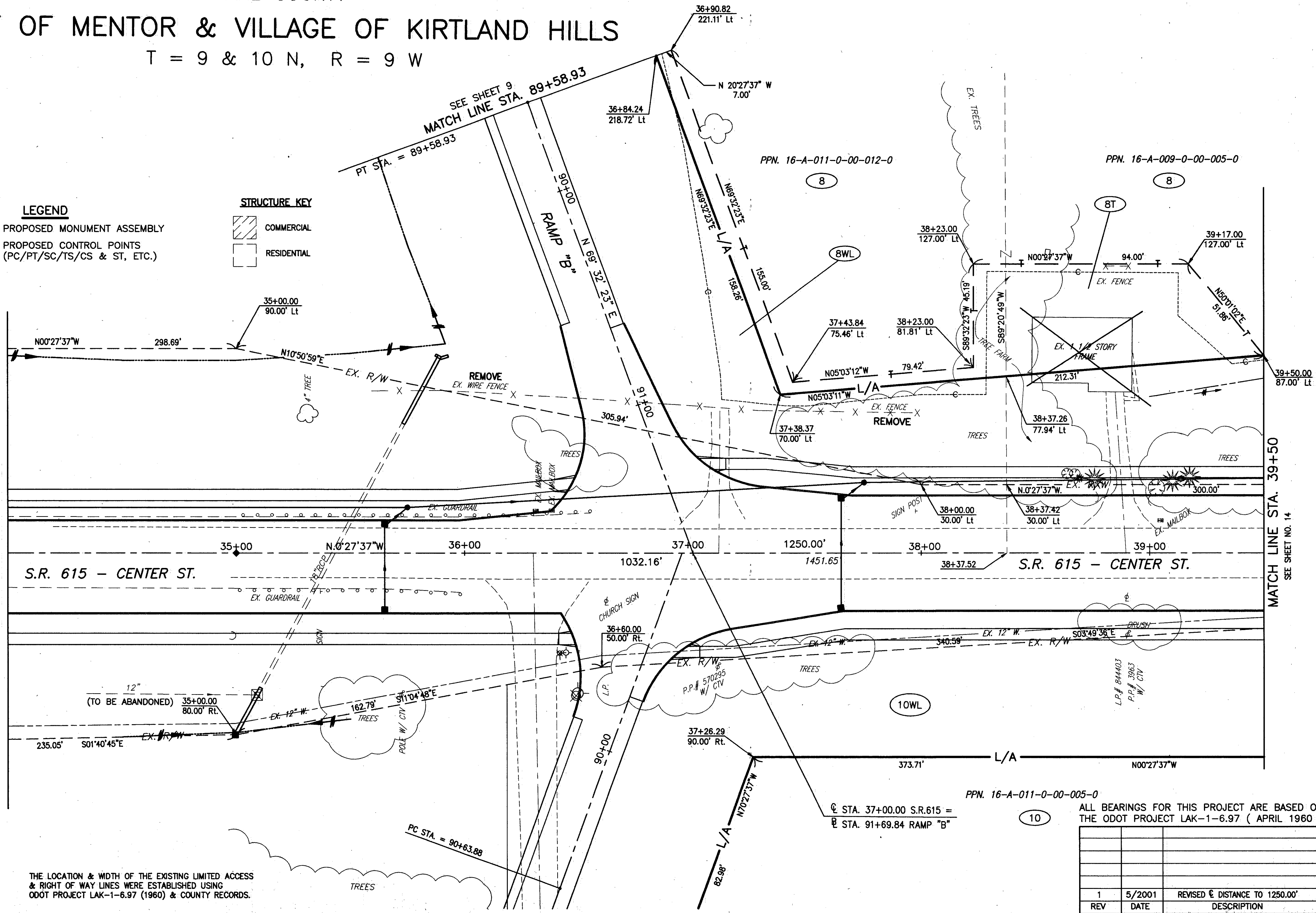
RIGHT OF WAY PLAN
 STA. 34+00 TO STA. 39+50

LAK-IR90/SR615-9.26/1.51

13/24
 383
 393

- LEGEND**
- ◆ PROPOSED MONUMENT ASSEMBLY
 - PROPOSED CONTROL POINTS (PC/PT/SC/TS/CS & ST, ETC.)

- STRUCTURE KEY**
- ▨ COMMERCIAL
 - RESIDENTIAL



THE LOCATION & WIDTH OF THE EXISTING LIMITED ACCESS & RIGHT OF WAY LINES WERE ESTABLISHED USING ODOT PROJECT LAK-1-6.97 (1960) & COUNTY RECORDS.

ALL BEARINGS FOR THIS PROJECT ARE BASED ON THE ODOT PROJECT LAK-1-6.97 (APRIL 1960)

REV	DATE	DESCRIPTION
1	5/2001	REVISED @ DISTANCE TO 1250.00'
DATE COMPLETED:		

H:\CT\97125\SDSK\PRERW.DWG 5/09/01