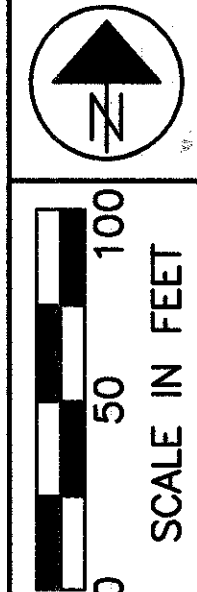


LAKE COUNTY
 CITY OF MENTOR & VILLAGE OF KIRTLAND HILLS
 T = 9 & 10 N, R = 9 W



PID NO. 9331
 R/W DESIGNER P.S.L.
 R/W REVIEWER W.D.B.

RIGHT OF WAY PLAN

LAK-IR90/SR615-9.26/1.51

11/24
 380
 393

BOLTON PROPERTIES LIMITED
 PPN. 16-A-011-0-00-005-0
 10

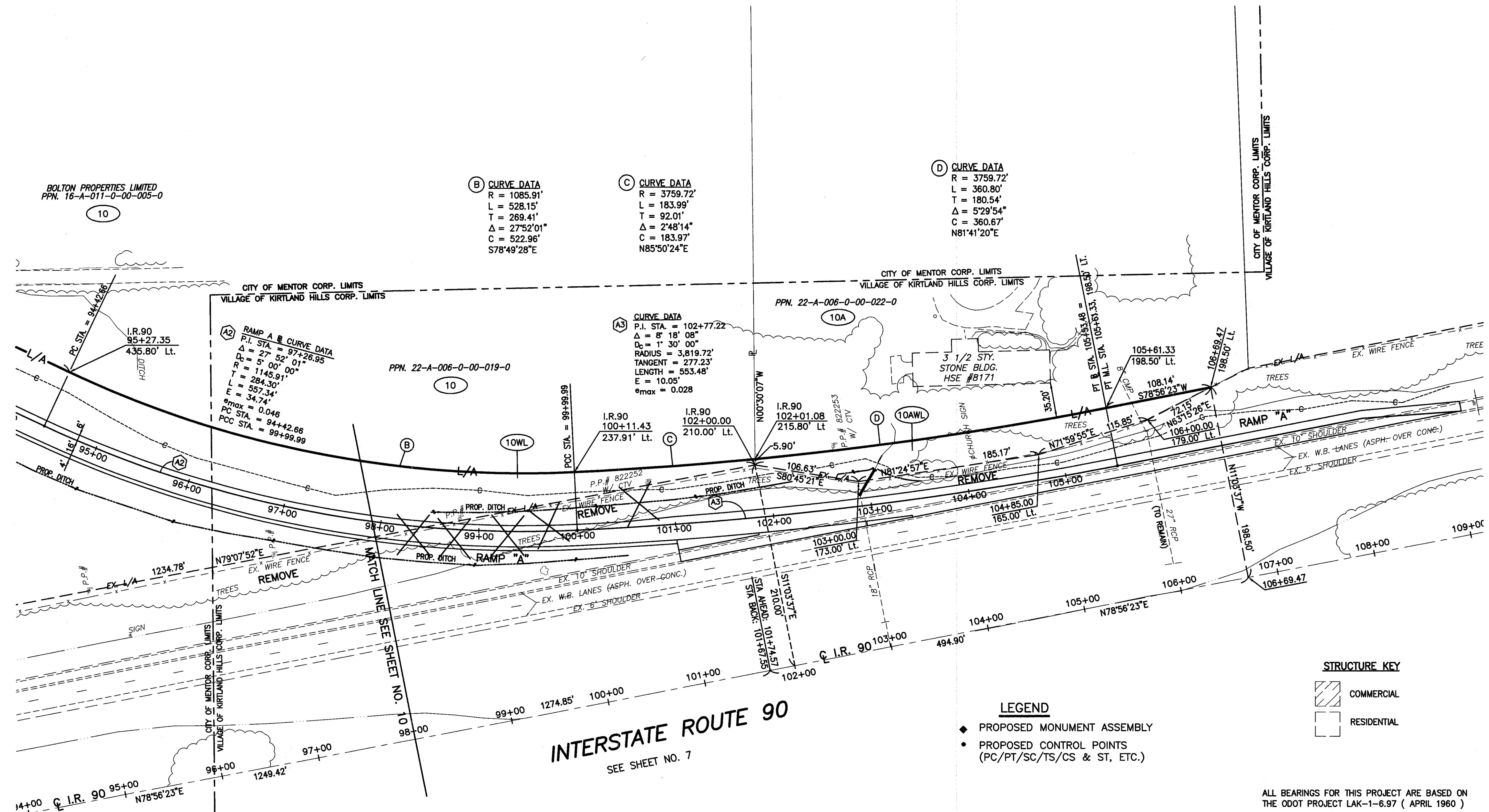
(B) CURVE DATA
 R = 1085.91'
 L = 528.15'
 T = 269.41'
 $\Delta = 27^{\circ}52'01''$
 C = 522.96'
 S78°49'28"E

(C) CURVE DATA
 R = 3759.72'
 L = 183.99'
 T = 92.01'
 $\Delta = 2^{\circ}48'14''$
 C = 183.97'
 N85°50'24"E

(D) CURVE DATA
 R = 3759.72'
 L = 360.80'
 T = 180.54'
 $\Delta = 5^{\circ}29'54''$
 C = 360.67'
 N81°41'20"E

(A2) RAMP A & B CURVE DATA
 P.I. STA. = 97+26.95
 $\Delta = 27^{\circ}52'01''$
 $D_c = 5^{\circ}00'00''$
 R = 1145.91'
 T = 284.30'
 L = 557.34'
 E = 34.74'
 $e_{max} = 0.046$
 PC STA. = 94+42.66
 PCC STA. = 99+99.99

(A3) CURVE DATA
 P.I. STA. = 102+77.22
 $\Delta = 8^{\circ}18'08''$
 $D_c = 1^{\circ}30'00''$
 RADIUS = 3,819.72'
 TANGENT = 277.23'
 LENGTH = 553.48'
 E = 10.05'
 $e_{max} = 0.028$



INTERSTATE ROUTE 90
 SEE SHEET NO. 7

- LEGEND**
- ◆ PROPOSED MONUMENT ASSEMBLY
 - PROPOSED CONTROL POINTS (PC/PT/SC/TS/CS & ST, ETC.)

STRUCTURE KEY

	COMMERCIAL
	RESIDENTIAL

ALL BEARINGS FOR THIS PROJECT ARE BASED ON THE ODOT PROJECT LAK-1-6.97 (APRIL 1960)

NOTE: ALL STATION & OFFSETS USED FOR RIGHT OF WAY TAKES ARE BASED OFF OF I.R. 90 & S.R. 615. RAMP A STATIONING DOES NOT APPLY.

THE LOCATION & WIDTH OF THE EXISTING LIMITED ACCESS & RIGHT OF WAY LINES WERE ESTABLISHED USING ODOT PROJECT LAK-1-6.97 (1960) & COUNTY RECORDS.

REV	DATE	DESCRIPTION
1	2/03	ADDED PARCEL 10AWL
DATE COMPLETED:		

H:\CT\97125\SDSK\RW\10LA2.dwg 08/17/2000 03:03:52 PM EDT