

LAKE COUNTY
 CITY OF MENTOR & VILLAGE OF KIRTLAND HILLS
 T = 9 & 10 N, R = 9 W



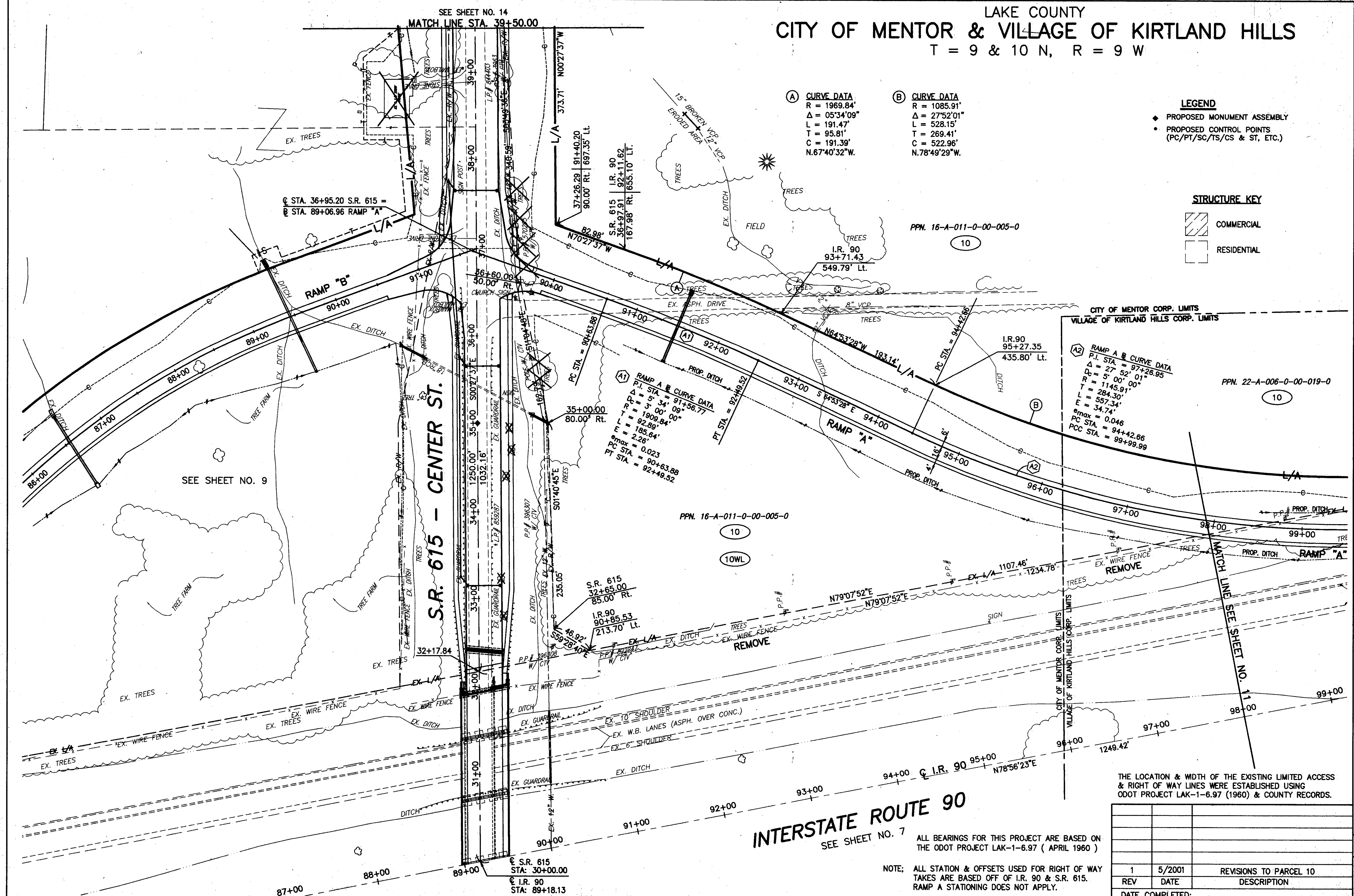
SEE SHEET NO. 14
 MATCH LINE STA. 39+50.00

- (A) CURVE DATA**
 R = 1969.84'
 Δ = 05°34'09"
 L = 191.47'
 T = 95.81'
 C = 191.39'
 N.67°40'32"W.
- (B) CURVE DATA**
 R = 1085.91'
 Δ = 27°52'01"
 L = 528.15'
 T = 269.41'
 C = 522.96'
 N.78°49'29"W.

- LEGEND**
- ◆ PROPOSED MONUMENT ASSEMBLY
 - PROPOSED CONTROL POINTS (PC/PT/SC/TS/CS & ST, ETC.)

- STRUCTURE KEY**
- ▨ COMMERCIAL
 - RESIDENTIAL

PID NO. 9331
 R/W DESIGNER P.S.L.
 R/W REVIEWER W.D.B.



CITY OF MENTOR CORP. LIMITS
VILLAGE OF KIRTLAND HILLS CORP. LIMITS

(A2) RAMP A & B CURVE DATA
 P.I. STA. = 97+26.95
 Δ = 27°52'01"
 D = 5' 00" 00"
 R = 1145.91'
 T = 284.30'
 L = 557.34'
 E = 34.74'
 Emax = 0.046
 PC STA. = 94+42.66
 PCC STA. = 99+99.99

(A1) RAMP A & B CURVE DATA
 P.I. STA. = 91+56.77
 Δ = 5°34'09"
 D = 3' 00" 00"
 R = 1909.84'
 T = 92.89'
 L = 185.64'
 E = 2.26'
 Emax = 0.023
 PC STA. = 90+63.88
 PT STA. = 92+49.52

S.R. 615
 32+65.00
 85.00' Rt.

I.R. 90
 90+85.53
 213.70' Lt.

INTERSTATE ROUTE 90
 SEE SHEET NO. 7

NOTE: ALL STATION & OFFSETS USED FOR RIGHT OF WAY TAKES ARE BASED OFF OF I.R. 90 & S.R. 615. RAMP A STATIONING DOES NOT APPLY.

THE LOCATION & WIDTH OF THE EXISTING LIMITED ACCESS & RIGHT OF WAY LINES WERE ESTABLISHED USING ODOT PROJECT LAK-1-6.97 (1960) & COUNTY RECORDS.

REV	DATE	DESCRIPTION
1	5/2001	REVISIONS TO PARCEL 10
DATE COMPLETED:		

RIGHT OF WAY PLAN

LAK-IR90/SR615-9.26/1.51

10/24

381
 393

H:\CT\97125\SDSKY\RW\10LA.dwg 05/09/2001 02:04:56 PM PM EDT