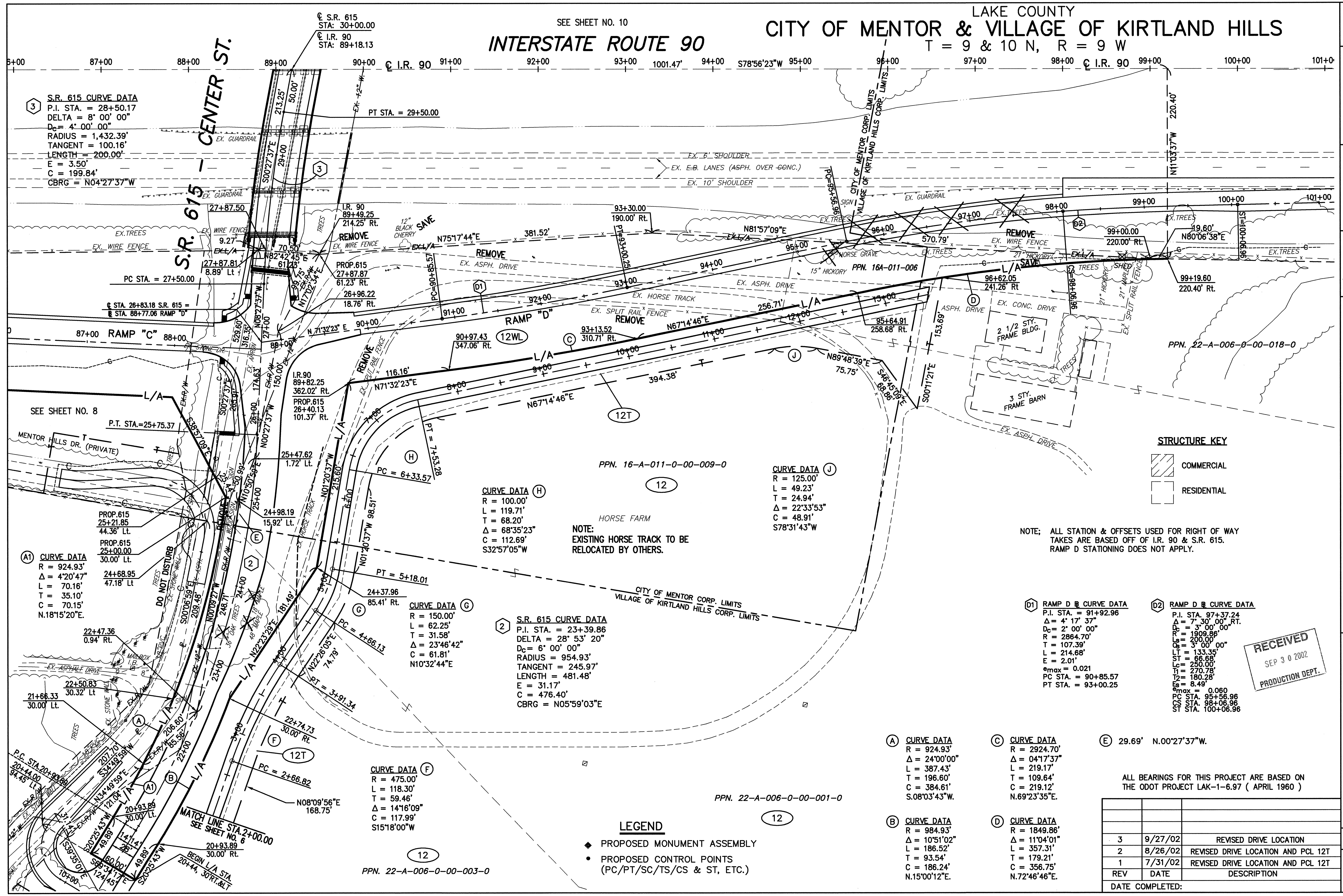


LAKE COUNTY  
**CITY OF MENTOR & VILLAGE OF KIRTLAND HILLS**  
 T = 9 & 10 N, R = 9 W

SEE SHEET NO. 10

**INTERSTATE ROUTE 90**



**S.R. 615 CURVE DATA**  
 P.I. STA. = 28+50.17  
 DELTA = 8° 00' 00"  
 Dc = 4' 00' 00"  
 RADIUS = 1,432.39'  
 TANGENT = 100.16'  
 LENGTH = 200.00'  
 E = 3.50'  
 C = 199.84'  
 CBRG = N04°27'37"W

**S.R. 615 - CENTER ST.**

**CURVE DATA (H)**  
 R = 100.00'  
 L = 119.71'  
 T = 68.20'  
 Δ = 68°35'23"  
 C = 112.69'  
 S32°57'05"W

**S.R. 615 CURVE DATA**  
 P.I. STA. = 23+39.86  
 DELTA = 28° 53' 20"  
 Dc = 6' 00' 00"  
 RADIUS = 954.93'  
 TANGENT = 245.97'  
 LENGTH = 481.48'  
 E = 31.17'  
 C = 476.40'  
 CBRG = N05°59'03"E

**CURVE DATA (J)**  
 R = 125.00'  
 L = 49.23'  
 T = 24.94'  
 Δ = 22°33'53"  
 C = 48.91'  
 S78°31'43"W

**CURVE DATA (G)**  
 R = 150.00'  
 L = 62.25'  
 T = 31.58'  
 Δ = 23°46'42"  
 C = 61.81'  
 N10°32'44"E

**CURVE DATA (F)**  
 R = 475.00'  
 L = 118.30'  
 T = 59.46'  
 Δ = 14°16'09"  
 C = 117.99'  
 S15°18'00"W

**CURVE DATA (A1)**  
 R = 924.93'  
 Δ = 4°20'47"  
 L = 70.16'  
 T = 35.10'  
 C = 70.15'  
 N.18°15'20"E

**PROP. 615**  
 25+21.85  
 44.36' Lt.  
**PROP. 615**  
 25+00.00  
 30.00' Lt.  
 24+68.95  
 47.18' Lt.

21+66.33  
 30.00' Lt.  
 22+50.83  
 30.32' Lt.

P.C. STA. 20+93.89  
 20+44.00  
 94.45' Lt.

20+93.89  
 30.00' Lt.  
 20+93.89  
 30.00' Lt.

**STRUCTURE KEY**  
 COMMERCIAL  
 RESIDENTIAL

NOTE: ALL STATION & OFFSETS USED FOR RIGHT OF WAY TAKES ARE BASED OFF OF I.R. 90 & S.R. 615. RAMP D STATIONING DOES NOT APPLY.

**(D1) RAMP D @ CURVE DATA**  
 P.I. STA. = 91+92.96  
 Δ = 4° 17' 37"  
 Dc = 2' 00' 00"  
 R = 2864.70'  
 T = 107.39'  
 E = 2.01'  
 e<sub>max</sub> = 0.021  
 PC STA. = 90+85.57  
 PT STA. = 93+00.25

**(D2) RAMP D @ CURVE DATA**  
 P.I. STA. 97+37.24  
 Δ = 7° 30' 00" RT.  
 Dc = 3' 00' 00"  
 R = 1909.86'  
 Ls = 200.00'  
 Cs = 3' 00' 00"  
 LT = 133.35'  
 ST = 66.68'  
 Lc = 250.00'  
 T = 270.78'  
 T2 = 180.28'  
 Es = 8.49'  
 e<sub>max</sub> = 0.060  
 PC STA. 95+56.96  
 CS STA. 98+06.96  
 ST STA. 100+06.96

**(A) CURVE DATA**  
 R = 924.93'  
 Δ = 24°00'00"  
 L = 387.43'  
 T = 196.60'  
 C = 384.61'  
 S.08°03'43"W.

**(C) CURVE DATA**  
 R = 2924.70'  
 Δ = 04°17'37"  
 L = 219.17'  
 T = 109.64'  
 C = 219.12'  
 N.69°23'35"E.

**(B) CURVE DATA**  
 R = 984.93'  
 Δ = 10°51'02"  
 L = 186.52'  
 T = 93.54'  
 C = 186.24'  
 N.15°00'12"E.

**(D) CURVE DATA**  
 R = 1849.86'  
 Δ = 11°04'01"  
 L = 357.31'  
 T = 179.21'  
 C = 356.25'  
 N.72°46'46"E.

**LEGEND**  
 ◆ PROPOSED MONUMENT ASSEMBLY  
 • PROPOSED CONTROL POINTS (PC/PT/SC/TS/CS & ST, ETC.)

**RECEIVED**  
 SEP 3 0 2002  
 PRODUCTION DEPT.

ALL BEARINGS FOR THIS PROJECT ARE BASED ON THE ODOT PROJECT LAK-1-6.97 ( APRIL 1960 )

| REV | DATE    | DESCRIPTION                        |
|-----|---------|------------------------------------|
| 3   | 9/27/02 | REVISED DRIVE LOCATION             |
| 2   | 8/26/02 | REVISED DRIVE LOCATION AND PCL 12T |
| 1   | 7/31/02 | REVISED DRIVE LOCATION AND PCL 12T |
| REV |         | DESCRIPTION                        |

DATE COMPLETED:

SCALE IN FEET

PID NO. 9331  
 R/W DESIGNER P.S.L.  
 R/W REVIEWER W.D.B.

**RIGHT OF WAY PLAN**

LAK-IR90/SR615-9.26/1.51

7 / 24  
 376  
 393

H:\CT\97125\305K\RW\12LA.DWG 08/26/02 02:30:27 PM PW EDT