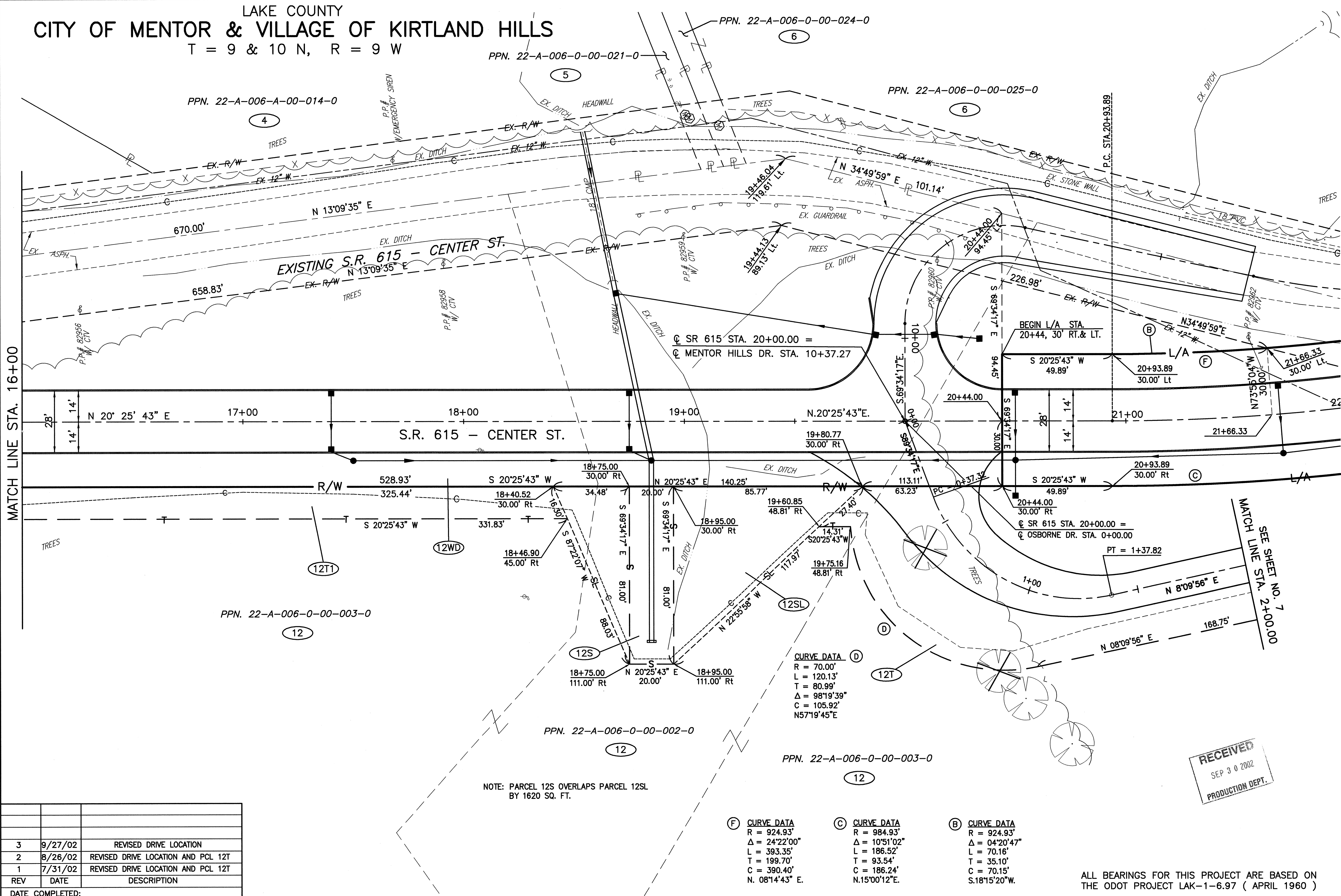
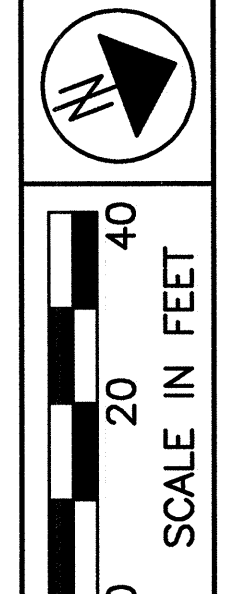


LAKE COUNTY
CITY OF MENTOR & VILLAGE OF KIRTLAND HILLS

T = 9 & 10 N, R = 9 W



SEE SHEET 5

MATCH LINE STA. 16+00

MATCH LINE STA. 2+00.00
SEE SHEET NO. 7

RIGHT OF WAY PLAN
STA. 16+00.00 TO STA. 21+00.00

LAK-IR90/SR615-9.26/1.51

6/24
375
393

PPN. 22-A-006-A-00-014-0

PPN. 22-A-006-0-00-021-0

PPN. 22-A-006-0-00-025-0

PPN. 22-A-006-0-00-003-0

PPN. 22-A-006-0-00-002-0

PPN. 22-A-006-0-00-003-0

NOTE: PARCEL 12S OVERLAPS PARCEL 12SL BY 1620 SQ. FT.

CURVE DATA (D)
R = 70.00'
L = 120.13'
T = 80.99'
Δ = 98°19'39"
C = 105.92'
N57°19'45"E

(F) CURVE DATA
R = 924.93'
Δ = 24°22'00"
L = 393.35'
T = 199.70'
C = 390.40'
N. 08°14'43" E.

(C) CURVE DATA
R = 984.93'
Δ = 10°51'02"
L = 186.52'
T = 93.54'
C = 186.24'
N.15°00'12"E.

(B) CURVE DATA
R = 924.93'
Δ = 04°20'47"
L = 70.16'
T = 35.10'
C = 70.15'
S.18°15'20"W.

RECEIVED
SEP 3 0 2002
PRODUCTION DEPT.

ALL BEARINGS FOR THIS PROJECT ARE BASED ON THE ODOT PROJECT LAK-1-6.97 (APRIL 1960)

H:\CT\97125\SDSK\RW\12WD.dwg 08/26/02 02:15:18 PM PM EDT

REV	DATE	DESCRIPTION
3	9/27/02	REVISED DRIVE LOCATION
2	8/26/02	REVISED DRIVE LOCATION AND PCL 12T
1	7/31/02	REVISED DRIVE LOCATION AND PCL 12T
DATE COMPLETED:		