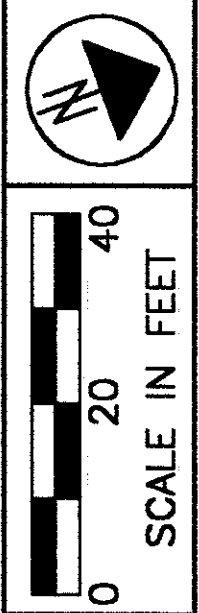


LAKE COUNTY
CITY OF MENTOR & VILLAGE OF KIRTLAND HILLS
T = 9 & 10 N, R = 9 W



PID NO. 9331
R/W DESIGNER P.S.L.
R/W REVIEWER W.D.B.

RIGHT OF WAY PLAN
STA. 11+00.00 TO STA. 16+00.00

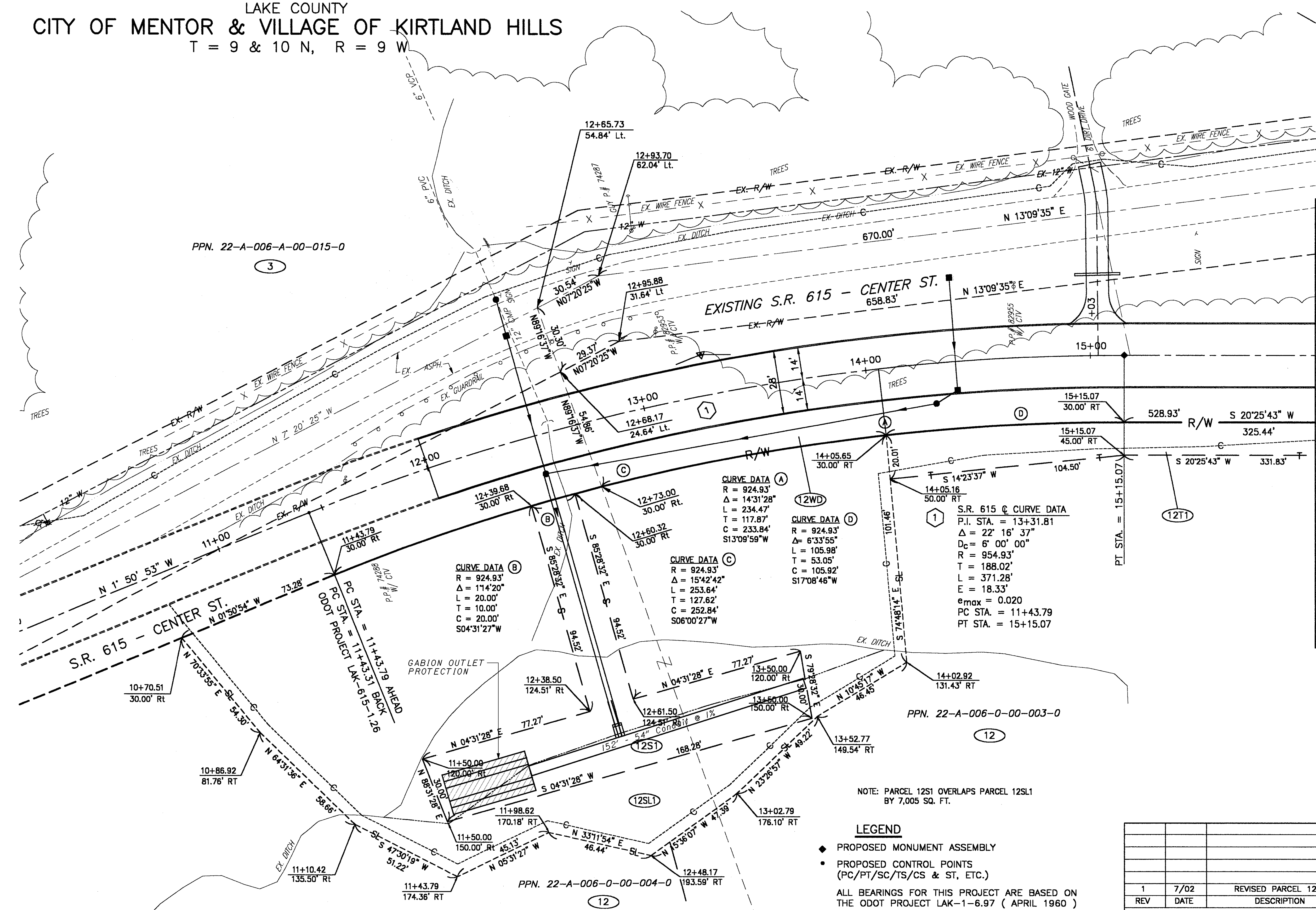
LAK-IR90/SR615-9.26/1.51

5/24
374
393

PPN. 22-A-006-A-00-015-0
3

EXISTING S.R. 615 - CENTER ST.
658.83'

MATCH LINE STA. 16+00
SEE SHEET 6



CURVE DATA (B)
R = 924.93'
Δ = 114°20'
L = 20.00'
T = 10.00'
C = 20.00'
S04°31'27"W

CURVE DATA (C)
R = 924.93'
Δ = 15°42'42"
L = 253.64'
T = 127.62'
C = 252.84'
S08°00'27"W

CURVE DATA (A)
R = 924.93'
Δ = 14°31'28"
L = 234.47'
T = 117.87'
C = 233.84'
S13°09'59"W

CURVE DATA (D)
R = 924.93'
Δ = 6°33'55"
L = 105.98'
T = 53.05'
C = 105.92'
S17°08'46"W

S.R. 615 @ CURVE DATA
P.I. STA. = 13+31.81
Δ = 22° 16' 37"
D_C = 6' 00" 00"
R = 954.93'
T = 188.02'
L = 371.28'
E = 18.33'
e_{max} = 0.020
PC STA. = 11+43.79
PT STA. = 15+15.07

NOTE: PARCEL 12S1 OVERLAPS PARCEL 12S1
BY 7,005 SQ. FT.

LEGEND

- ◆ PROPOSED MONUMENT ASSEMBLY
- PROPOSED CONTROL POINTS (PC/PT/SC/TS/CS & ST, ETC.)

ALL BEARINGS FOR THIS PROJECT ARE BASED ON THE ODOT PROJECT LAK-1-6.97 (APRIL 1960)

REV	DATE	DESCRIPTION
1	7/02	REVISED PARCEL 12S1
DATE COMPLETED:		

I:\PROJECTS\125\125\503K\RW\12WD.dwg 08/25/2000 10:28:11 AM EDT jlorincz 08-AUG-2002 12:23PM