

PID NO. 9331
 R/W DESIGNER P.S.L.
 R/W REVIEWER W.D.B.

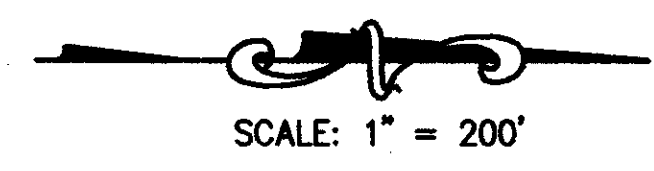
CENTERLINE SURVEY PLAT

LAK-IR90/SR615-9.26/1.51

1/24

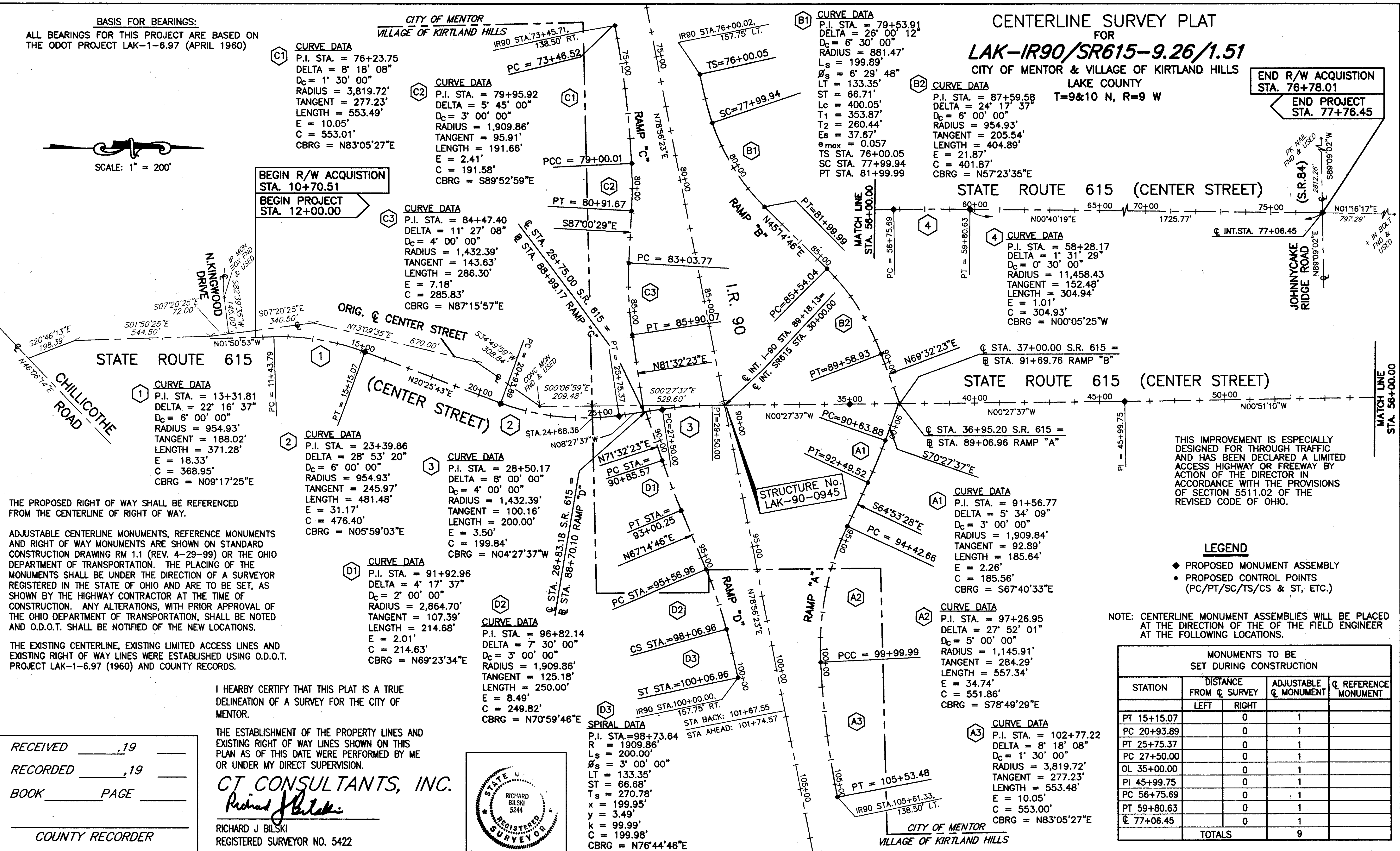
370A
393

BASIS FOR BEARINGS:
 ALL BEARINGS FOR THIS PROJECT ARE BASED ON THE ODOT PROJECT LAK-1-6.97 (APRIL 1960)



CENTERLINE SURVEY PLAT
 FOR
LAK-IR90/SR615-9.26/1.51
 CITY OF MENTOR & VILLAGE OF KIRTLAND HILLS
 LAKE COUNTY

END R/W ACQUISITION STA. 76+78.01
 END PROJECT STA. 77+76.45



CURVE DATA 1
 P.I. STA. = 13+31.81
 DELTA = 22° 16' 37"
 D_c = 6' 00" 00"
 RADIUS = 954.93'
 TANGENT = 188.02'
 LENGTH = 371.28'
 E = 18.33'
 C = 368.95'
 CBRG = N09°17'25"E

CURVE DATA 2
 P.I. STA. = 23+39.86
 DELTA = 28° 53' 20"
 D_c = 6' 00" 00"
 RADIUS = 954.93'
 TANGENT = 245.97'
 LENGTH = 481.48'
 E = 31.17'
 C = 476.40'
 CBRG = N05°59'03"E

CURVE DATA 3
 P.I. STA. = 28+50.17
 DELTA = 8° 00' 00"
 D_c = 4' 00" 00"
 RADIUS = 1,432.39'
 TANGENT = 100.16'
 LENGTH = 200.00'
 E = 3.50'
 C = 199.84'
 CBRG = N04°27'37"W

CURVE DATA D1
 P.I. STA. = 91+92.96
 DELTA = 4° 17' 37"
 D_c = 2' 00" 00"
 RADIUS = 2,864.70'
 TANGENT = 107.39'
 LENGTH = 214.68'
 E = 2.01'
 C = 214.63'
 CBRG = N69°23'34"E

CURVE DATA D2
 P.I. STA. = 96+82.14
 DELTA = 7° 30' 00"
 D_c = 3' 00" 00"
 RADIUS = 1,909.86'
 TANGENT = 125.18'
 LENGTH = 250.00'
 E = 8.49'
 C = 249.82'
 CBRG = N70°59'46"E

SPIRAL DATA
 P.I. STA. = 98+73.64
 R = 1909.86'
 L_s = 200.00'
 D_c = 3' 00" 00"
 LT = 133.35'
 ST = 66.68'
 T_s = 270.78'
 x = 199.95'
 y = 3.49'
 k = 99.99'
 C = 199.98'
 CBRG = N76°44'46"E

CURVE DATA B1
 P.I. STA. = 79+53.91
 DELTA = 26° 00' 12"
 D_c = 6' 30" 00"
 RADIUS = 881.47'
 L_s = 199.89'
 θ_s = 6° 29' 48"
 LT = 133.35'
 ST = 66.71'
 L_c = 400.05'
 T₁ = 353.87'
 T₂ = 260.44'
 E_s = 37.67'
 e_{max} = 0.057
 TS STA. 76+00.05
 SC STA. 77+99.94
 PT STA. 81+99.99

CURVE DATA B2
 P.I. STA. = 87+59.58
 DELTA = 24° 17' 37"
 D_c = 6' 00" 00"
 RADIUS = 954.93'
 TANGENT = 205.54'
 LENGTH = 404.89'
 E = 21.87'
 C = 401.87'
 CBRG = N57°23'35"E

CURVE DATA 4
 P.I. STA. = 58+28.17
 DELTA = 1° 31' 29"
 D_c = 0' 30" 00"
 RADIUS = 11,458.43'
 TANGENT = 152.48'
 LENGTH = 304.94'
 E = 1.01'
 C = 304.93'
 CBRG = N00°05'25"W

CURVE DATA A1
 P.I. STA. = 91+56.77
 DELTA = 5° 34' 09"
 D_c = 3' 00" 00"
 RADIUS = 1,909.84'
 TANGENT = 92.89'
 LENGTH = 185.64'
 E = 2.26'
 C = 185.56'
 CBRG = S67°40'33"E

CURVE DATA A2
 P.I. STA. = 97+26.95
 DELTA = 27° 52' 01"
 D_c = 5' 00" 00"
 RADIUS = 1,145.91'
 TANGENT = 284.29'
 LENGTH = 557.34'
 E = 34.74'
 C = 551.86'
 CBRG = S78°49'29"E

CURVE DATA A3
 P.I. STA. = 102+77.22
 DELTA = 8° 18' 08"
 D_c = 1' 30" 00"
 RADIUS = 3,819.72'
 TANGENT = 277.23'
 LENGTH = 553.48'
 E = 10.05'
 C = 553.00'
 CBRG = N83°05'27"E

THIS IMPROVEMENT IS ESPECIALLY DESIGNED FOR THROUGH TRAFFIC AND HAS BEEN DECLARED A LIMITED ACCESS HIGHWAY OR FREEWAY BY ACTION OF THE DIRECTOR IN ACCORDANCE WITH THE PROVISIONS OF SECTION 5511.02 OF THE REVISED CODE OF OHIO.

LEGEND
 ◆ PROPOSED MONUMENT ASSEMBLY
 ● PROPOSED CONTROL POINTS (PC/PT/SC/TS/CS & ST, ETC.)
 NOTE: CENTERLINE MONUMENT ASSEMBLIES WILL BE PLACED AT THE DIRECTION OF THE OF THE FIELD ENGINEER AT THE FOLLOWING LOCATIONS.

STATION	DISTANCE FROM C SURVEY		ADJUSTABLE C MONUMENT	C REFERENCE MONUMENT
	LEFT	RIGHT		
PT 15+15.07		0	1	
PC 20+93.89		0	1	
PT 25+75.37		0	1	
PC 27+50.00		0	1	
OL 35+00.00		0	1	
PI 45+99.75		0	1	
PC 56+75.69		0	1	
PT 59+80.63		0	1	
C 77+06.45		0	1	
TOTALS			9	

RECEIVED _____, 19____
 RECORDED _____, 19____
 BOOK _____ PAGE _____
 COUNTY RECORDER

I HERBY CERTIFY THAT THIS PLAT IS A TRUE DELINEATION OF A SURVEY FOR THE CITY OF MENTOR.
 THE ESTABLISHMENT OF THE PROPERTY LINES AND EXISTING RIGHT OF WAY LINES SHOWN ON THIS PLAN AS OF THIS DATE WERE PERFORMED BY ME OR UNDER MY DIRECT SUPERVISION.
CT CONSULTANTS, INC.
Richard J. Bilski
 RICHARD J. BILSKI
 REGISTERED SURVEYOR NO. 5422

