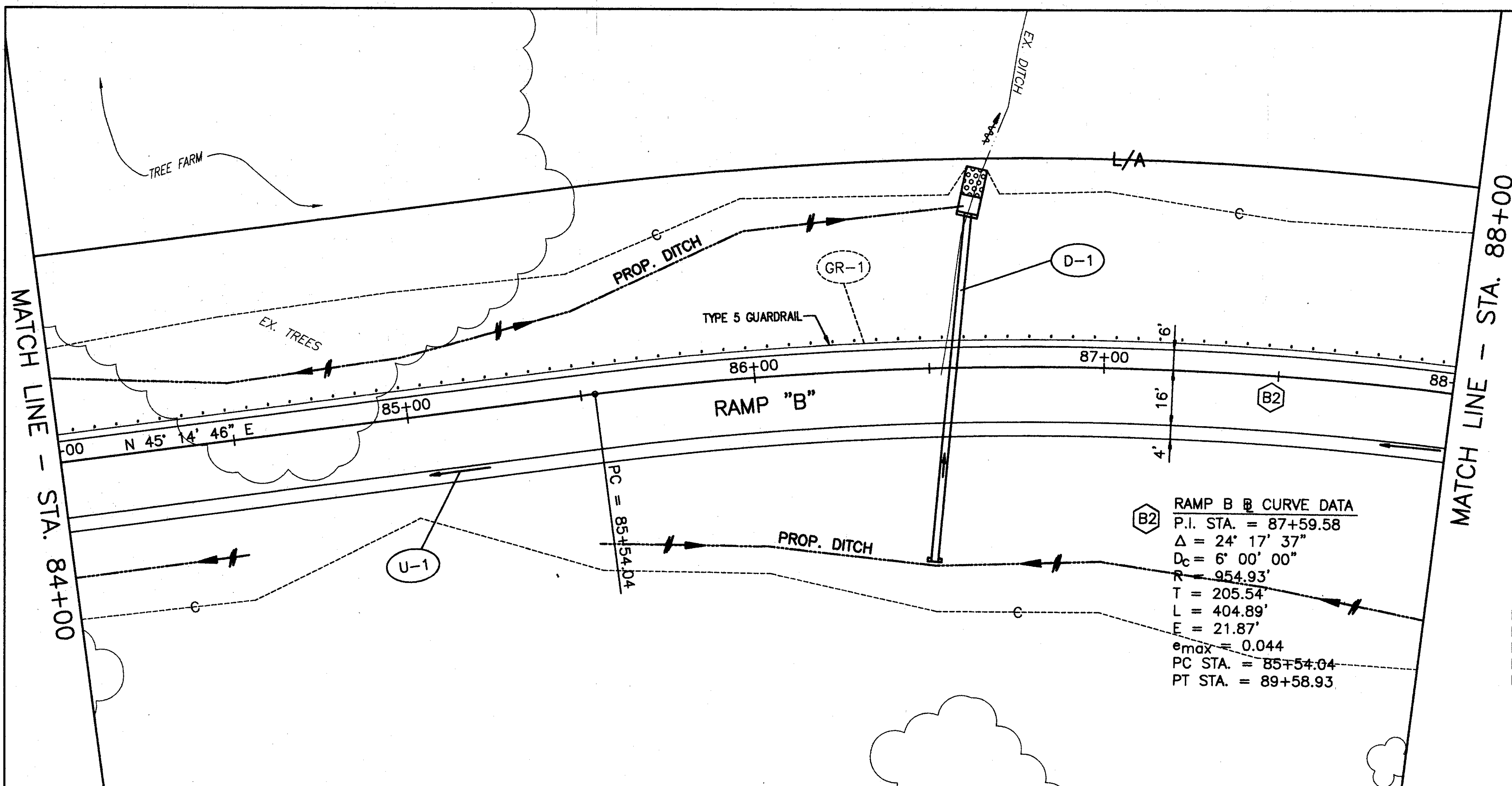
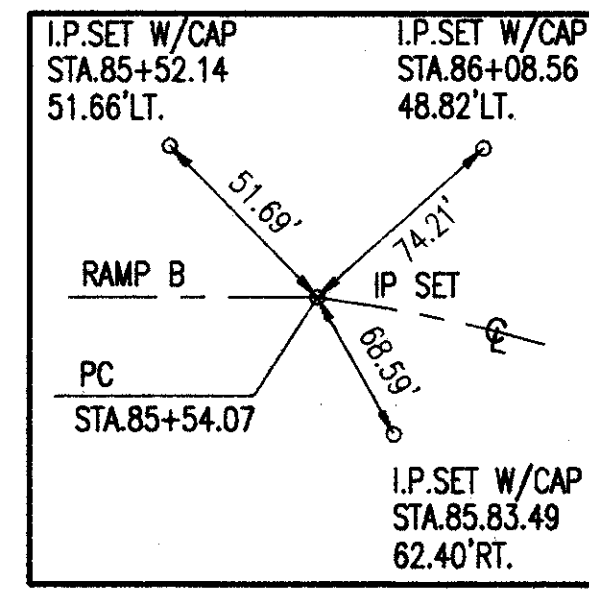


H:\CT\97125\SDSK\7125707B.DWG - PLOT SCALE = 1 : 1



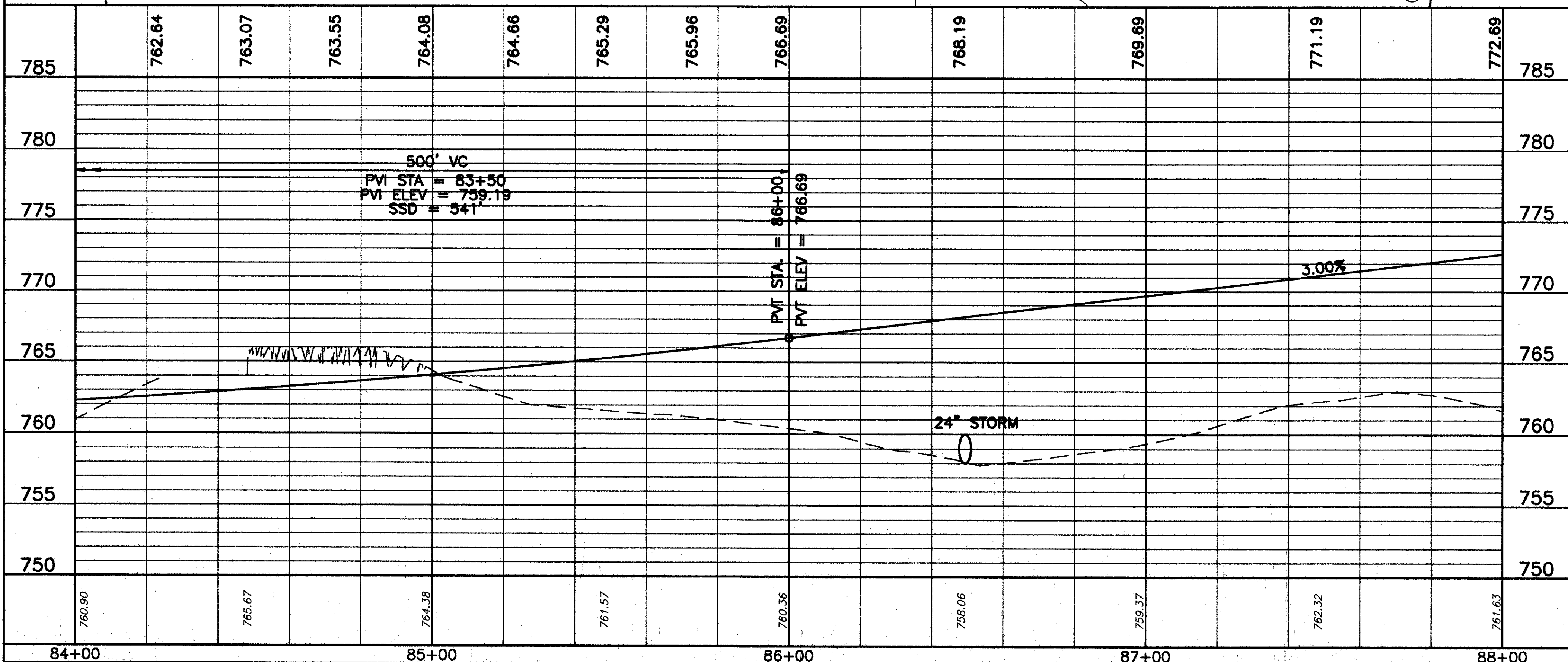
RAMP B @ CURVE DATA
 P.I. STA. = 87+59.58
 $\Delta = 24^\circ 17' 37''$
 $D_c = 6' 00' 00''$
 $R = 954.93'$
 $T = 205.54'$
 $L = 404.89'$
 $E = 21.87'$
 $e_{max} = 0.044$
 PC STA. = 85+54.04
 PT STA. = 89+58.93

PROPOSED STRUCTURE DATA - STA. 86+56.84	
TYPE	= 24" CONDUIT, TYPE A, 706.02
DRAINAGE AREA	= 2.3 AC.
Q ₂₅	= 6.00 C.F.S.
Q ₁₀₀	= 8.00 C.F.S.
HW ₂₅	= 760.87
HW ₁₀₀	= 761.44
V ₂₅	= 9.55 F.P.S.
V ₁₀₀	= 10.42 F.P.S.



SWTIE#20

FOR TYPICAL SECTIONS, SEE SHEETS 5 THRU 15
 FOR CROSS SECTIONS AND PIPE PROFILES, SEE SHEETS 194 THRU 210
 FOR SUPERELEVATION TABLES, SEE SHEETS 246 THRU 254
 FOR INTERSECTION DETAILS, SEE SHEETS 255 THRU 262
 FOR SIGNING AND PAVEMENT MARKING PLAN, SEE SHEETS 308 THRU 310



REF	LOCATION	SQ. YD.	CU. YD.	LN. FT.
603	24" CONDUIT, TYPE A, 706.02, OR 30" CONDUIT, TYPE A, 707.09 (0.109), AS PER PLAN			101
602	CONCRETE MASONRY		0.43	
601	ROCK CHANNEL PROTECTION, TYPE C WITH FILTER	2.7		
601	RIPRAP 6" REINFORCED CONCRETE SLAB	3.33		
TOTALS				101

REF	LOCATION	SQ. YD.	CU. YD.	LN. FT.
D-1	STA. 86+50, 54.5 RT. TO STA. 86+62, 44.5 LT.			
TOTALS				

LAK-IR90/SR615-9.26/1.51

RAMP B - PLAN AND PROFILE STA. 84+00 TO STA. 88+00

RAMP B

SCALE IN FEET

CALCULATED

PLW

CHECKED

WDB

192

93