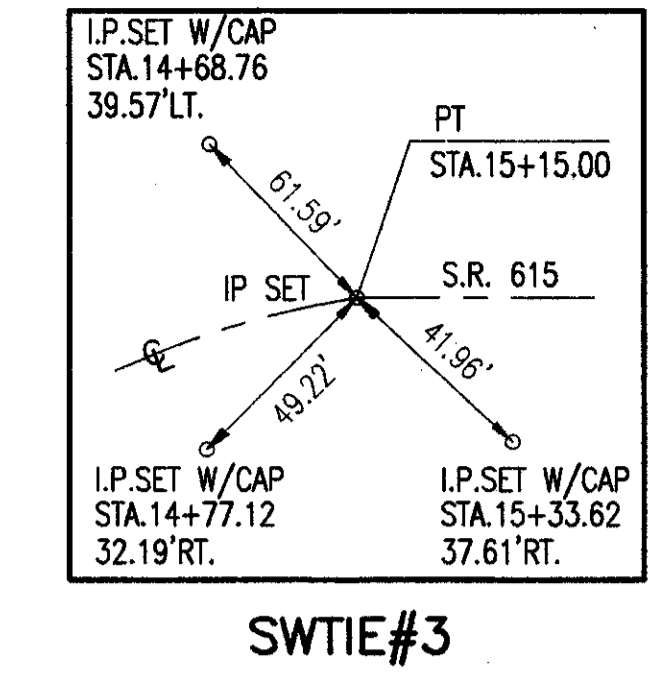
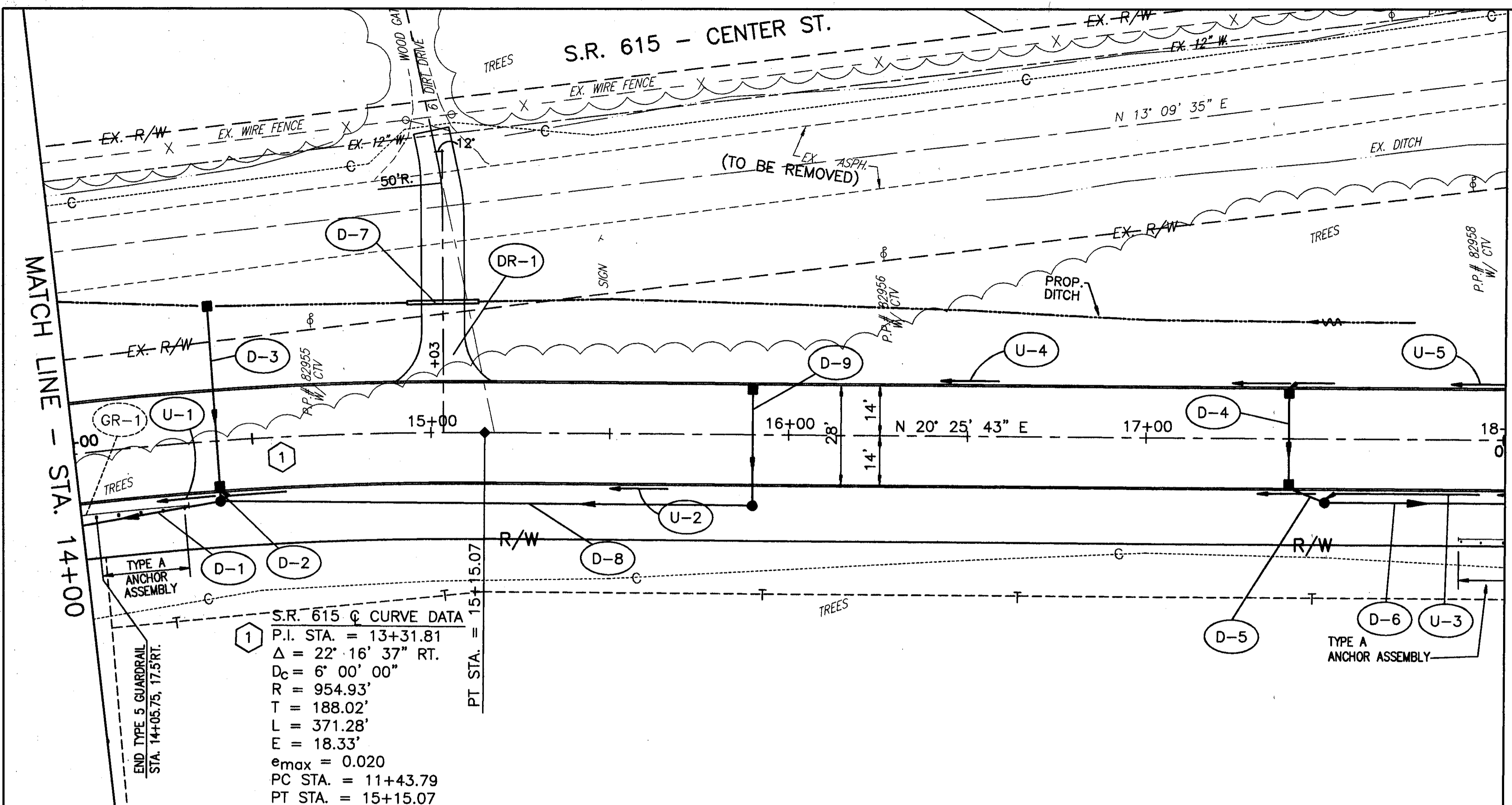


H:\CT\97125\SDSK\7125704.DWG - PLOT SCALE = 1 : 1



	770.37		770.65		770.93		771.21		771.49		771.77		772.05		772.33
780															780
775															775
770															770
765															765
760															760
755															755
750															750
	766.7		766.9		769.1		769.8		770.8		771.6		771.7		771.5
-00			15+00				16+00				17+00				18+

20 L.F. - 12" CONDUIT, TYPE D @ 0.56%  
 150 L.F. - 12" CONDUIT, TYPE C @ 1.00%  
 40 L.F. - 12" CONDUIT, TYPE C @ 1.00%  
 50 L.F. - 12" CONDUIT, TYPE C @ 0.50%

FL. 768.97  
 FL. 769.08

EX. 12" W.  
 STD. MH 3 STA = 14+40.00, 20' RT. RIM = 770.44 INV. 12" W = 763.55 INV. 12" S = 763.52 INV. 12" N = 764.04  
 STD. MH 3 STA = 15+90, 20' RT. RIM = 771.31 INV. 12" N & S = 765.54  
 STD. MH 3 STA = 17+50, 18' RT. RIM = 772.19 INV. 12" NE&W = 766.21

MATCH LINE - STA. 18+00

MATCH LINE - STA. 14+00

FOR TYPICAL SECTIONS, SEE SHEETS 5 THRU 15  
 FOR ROADWAY AND DRAINAGE QUANTITIES, SEE SHEET 64  
 FOR CROSS SECTIONS AND PIPE PROFILES, SEE SHEETS 97 THRU 144  
 FOR SUPERELEVATION TABLES, SEE SHEETS 246 THRU 254  
 FOR INTERSECTION DETAILS, SEE SHEETS 255 THRU 262  
 FOR DRIVEWAY PLANS AND PROFILES, SEE SHEETS 267 THRU 281  
 FOR DRIVEWAY DETAILS, SEE SHEET 282  
 FOR SIGNING AND PAVEMENT MARKING PLAN, SEE SHEETS 299 THRU 307

BENCH MARK #2  
 TOP I.P. SET SWING TIE #3  
 STA. 15+33.62, 37.61' RT.  
 ELEV. 769.12

S.R. 615  
 S.R. 615 - PLAN AND PROFILE STA. 14+00 TO STA. 18+00  
 LAK-IR90/SR615-9-26/1.51

CALCULATED  
 CHECKED

SCALE IN FEET  
 20  
 10  
 0

63  
 393