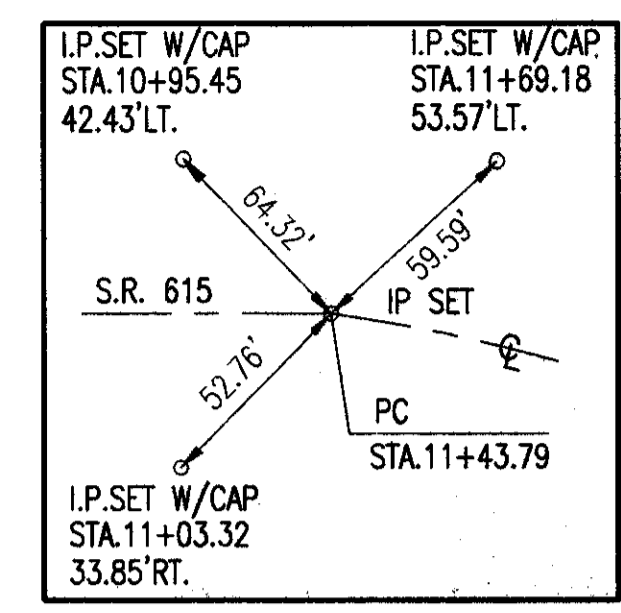


NOTE:
PROJECT LIMIT SET TO TIE INTO THE PROPOSED S.R. 615 PROJECT TO THE SOUTH WITHIN THE VILLAGE OF KIRTLAND HILLS.



S.R. 615 C CURVE DATA
P.I. STA. = 13+31.81
 $\Delta = 22^\circ 16' 37''$ RT.
 $D_c = 6' 00'' 00''$
 $R = 954.93'$
 $T = 188.02'$
 $L = 371.28'$
 $E = 18.33'$
 $e_{max} = 0.020$
PC STA. = 11+43.79
PT STA. = 15+15.07

