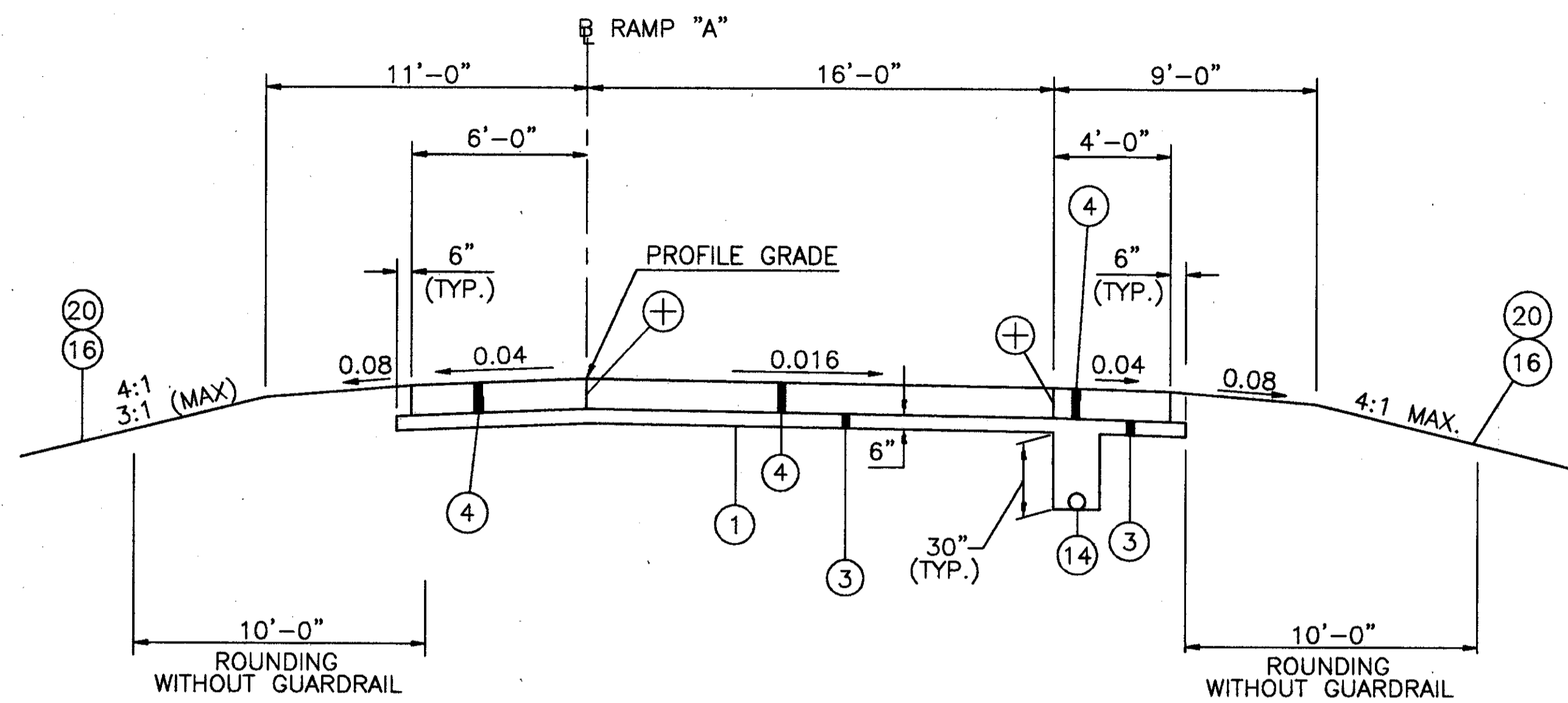
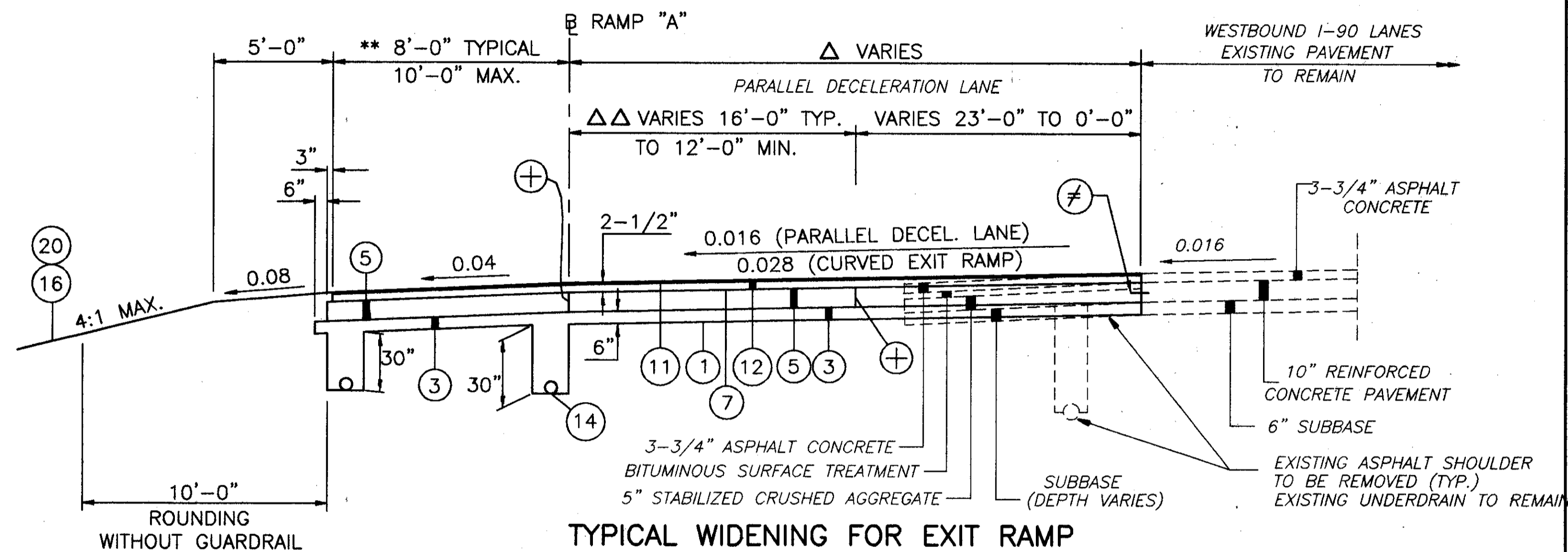


* VARIES FROM 6'-0" TO 8'-0" STA. 100+50.00 TO STA. 101+00.00
 **8'-0" FROM STA. 101+00.00 TO STA. 108+07.02
 **VARIES FROM 8'-0" TO 10'-0" STA. 108+07.02 TO STA. 109+07.02

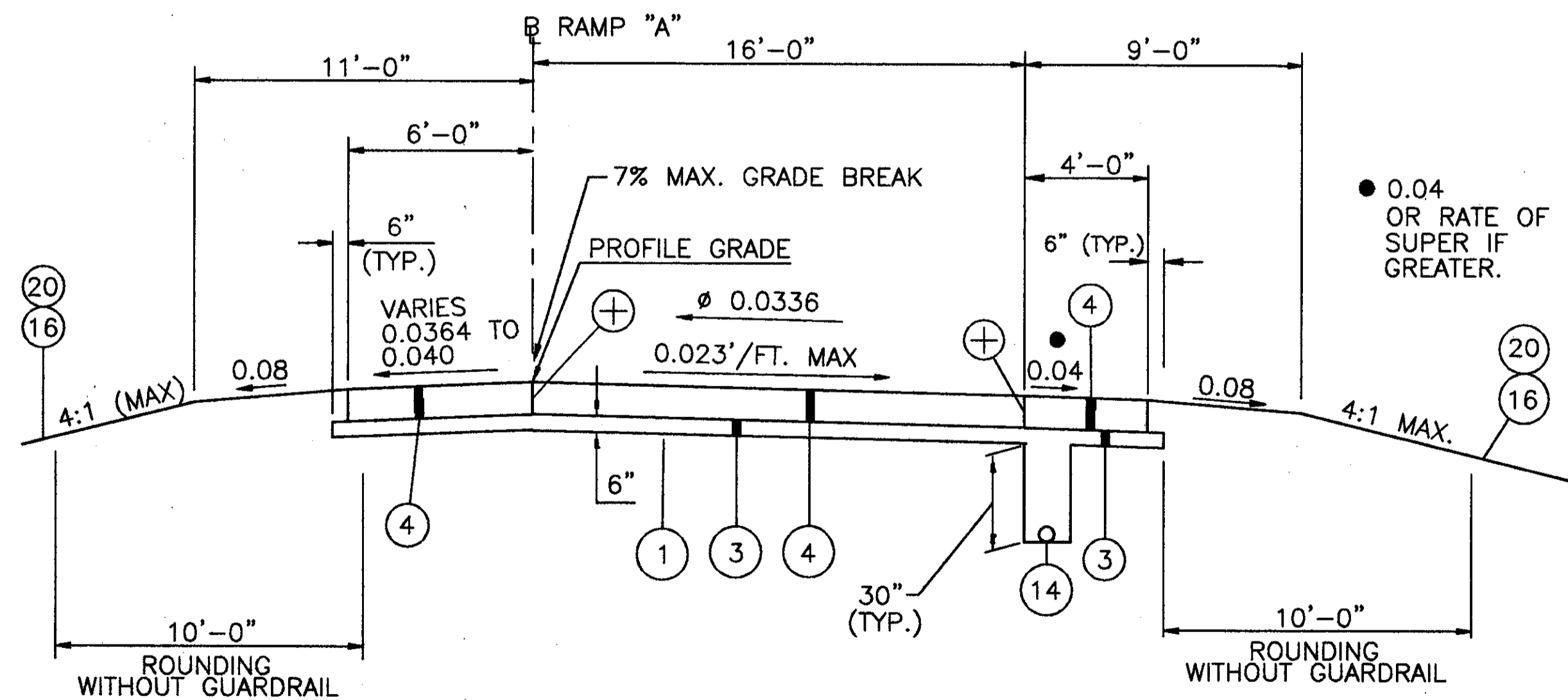
△ VARIES 39'-0" TO 12'-0" +/- STA. 101+00.00 TO STA. 105+53.48
 △ 12'-0" STA. 105+53.48 TO STA. 108+14.88
 △ VARIES 12'-0" TO 0'-0" STA. 108+14.88 TO STA. 109+14.88
 △△ STA. 101+00.00 TO STA. 105+53.48



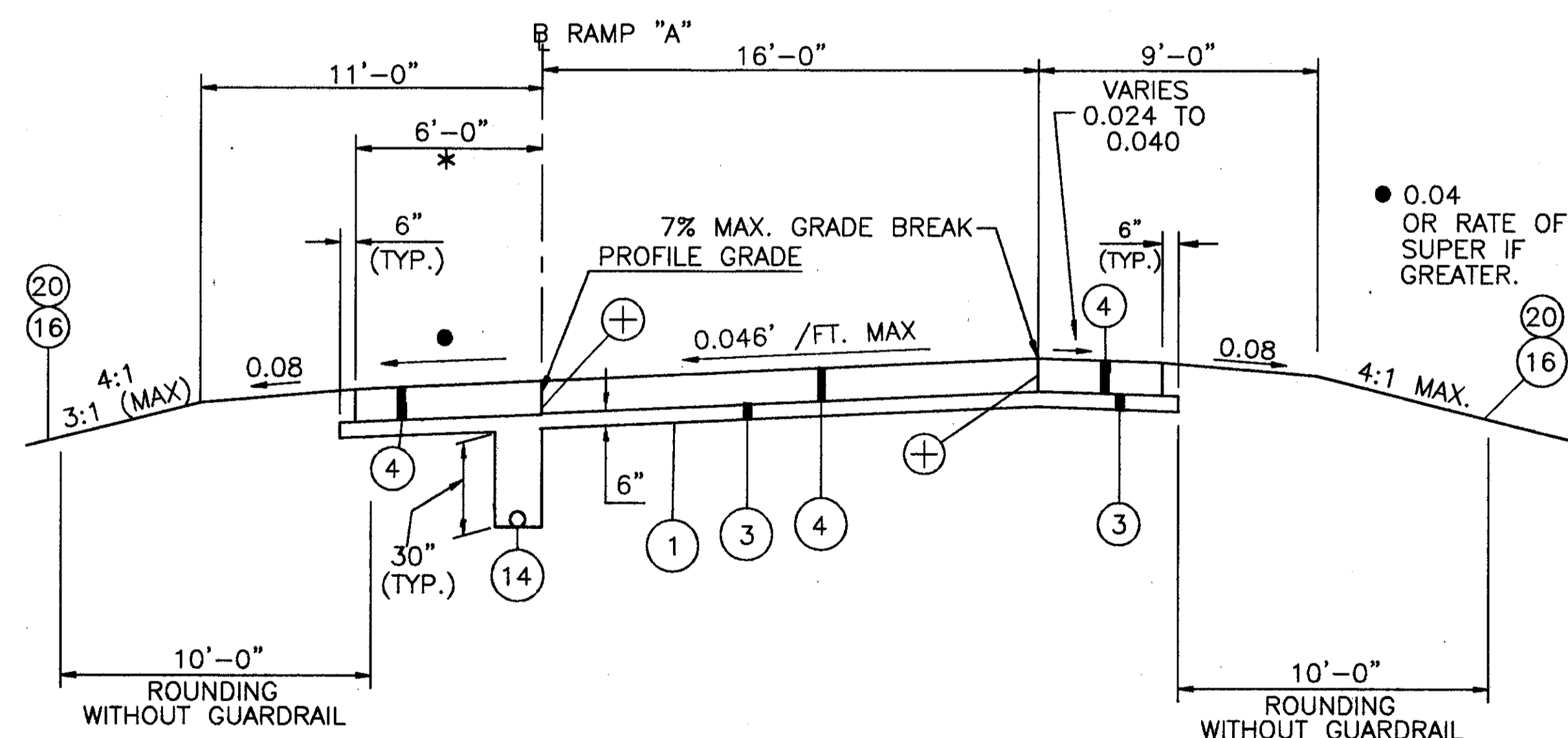
ONE LANE RAMP - NORMAL SECTION
 STA. 92+63.52 TO STA. 93+17.66 = 54.14 LIN. FT.



TYPICAL WIDENING FOR EXIT RAMP
 STA. 101+00.00 TO STA. 105+41.48 - FULL SUPERELEVATION = 441.48 LIN. FT. (CURVE LEFT)
 STA. 105+41.48 TO STA. 105+81.48 - SUPERELEVATION TRANSITION = 40.00 LIN. FT. (CURVE LEFT)
 STA. 105+81.48 TO STA. 109+07.02 = 325.54 LIN. FT. (TANGENT)
 807.02 LIN. FT.



ONE LANE RAMP, SUPERELEVATED SECTION
 STA. 89+34.63 TO STA. 89+68.88 - FULL SUPERELEVATION = 34.25 LIN. FT. (TANGENT)
 STA. 89+68.88 TO STA. 91+03.88 - SUPERELEVATION TRANSITION = 135.00 LIN. FT. (CURVE RIGHT)
 STA. 91+03.88 TO STA. 92+43.52 - FULL SUPERELEVATION = 139.64 LIN. FT. (CURVE RIGHT)
 STA. 92+43.52 TO STA. 92+63.52 - SUPERELEVATION TRANSITION = 20.00 LIN. FT. (CURVE RIGHT)



ONE LANE RAMP, SUPERELEVATED SECTION
 STA. 93+17.66 TO STA. 94+92.66 - SUPERELEVATION TRANSITION = 175.00 LIN. FT. (CURVE LEFT)
 STA. 94+92.66 TO STA. 99+69.99 - FULL SUPERELEVATION = 477.33 LIN. FT. (CURVE LEFT)
 STA. 99+69.99 TO STA. 100+29.99 - SUPERELEVATION TRANSITION = 60.00 LIN. FT. (CURVE LEFT)
 STA. 100+29.99 TO STA. 101+00.00 - FULL SUPERELEVATION = 70.01 LIN. FT. (CURVE LEFT)

H:\CT\97125\SDSK\97125206.DWG - PLOT SCALE 1:4

SR 615
 I.R. 90 PROPOSED RAMP "A" TYPICAL SECTIONS

LAK-IR90/SR615-9.26/1.51

FOR LEGEND SEE SHEET 6.