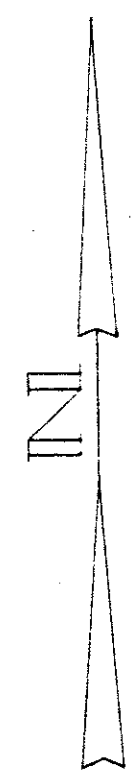
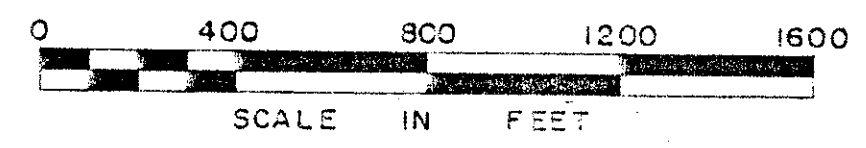


# LOCATION PLAN

LAK - 1 - 6.97

MENTOR TOWNSHIP    MENTOR VILLAGE    KIRTLAND HILLS VILLAGE  
LAKE COUNTY

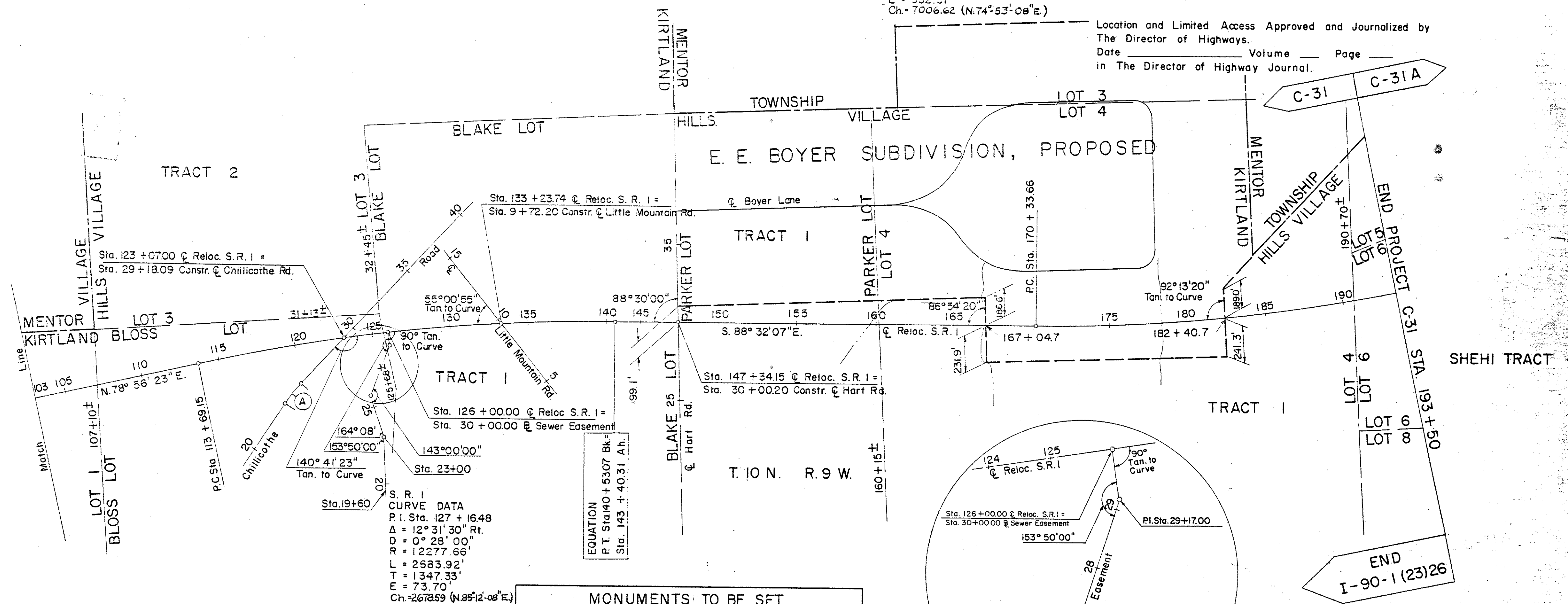


Received \_\_\_\_\_ Time \_\_\_\_\_ **38-1**  
 Recorded \_\_\_\_\_  
 Plat Book \_\_\_\_\_ Page \_\_\_\_\_  
 Signed \_\_\_\_\_ Recorder Lake County, Ohio  
 Fee \_\_\_\_\_ Paid \_\_\_\_\_

Signed Wm. B. Henry  
 Division Engineer  
 Date: 9-12-60  
 Signed \_\_\_\_\_  
 Robert E. Smith P.E. No. 18042  
 Partner - Capitol Engineering Associates  
 Date \_\_\_\_\_

S.R. 1  
 CURVE DATA  
 P.I. Sta. 206 + 38.93  
 $\Delta = 33^{\circ} 09' 30''$  Lt.  
 $D = 0^{\circ} 29' 00''$   
 $R = 12277.66'$   
 $L = 7105.36'$   
 $T = 3655.27'$   
 $E = 532.51'$   
 $Ch = 7006.62$  (N.74°53'08"E.)

Location and Limited Access Approved and Journalized by  
 The Director of Highways.  
 Date \_\_\_\_\_ Volume \_\_\_\_\_ Page \_\_\_\_\_  
 in The Director of Highway Journal.



(A)  
 CURVE DATA  
 P.I. Sta. 24 + 39.26  
 $\Delta = 9^{\circ} 40' 00''$  Rt.  
 $D = 6^{\circ} 00' 00''$   
 $R = 954.93'$   
 $L = 161.11'$   
 $T = 80.75'$   
 $E = 3.41'$   
 P.C. Sta. 23 + 58.51  
 P.T. Sta. 25 + 19.62  
 $Ch = 160.92$

S. R. 1  
 CURVE DATA  
 P.I. Sta. 127 + 16.48  
 $\Delta = 12^{\circ} 31' 30''$  Rt.  
 $D = 0^{\circ} 29' 00''$   
 $R = 12277.66'$   
 $L = 2583.92'$   
 $T = 1347.33'$   
 $E = 73.70'$   
 $Ch = 2678.59$  (N.85°12'08"E.)

EQUATION  
 P.T. Sta. 140 + 53.07 BK =  
 Sta. 143 + 40.31 A.H.

MONUMENTS TO BE SET AFTER CONSTRUCTION			
STATION	©	STATION	©
105 + 00	P.O.T.	170 + 33.66	P.C.
113 + 69.15	P.C.	177 + 50	P.O.C.
122 + 50	P.O.C.	185 + 50	P.O.C.
132 + 00	P.O.C.	193 + 50	P.O.C.
140 + 38.97 BK =	P.T.		
152 + 00	P.O.T.		
161 + 00	P.O.T.		

