

# LOCATION PLAN

## LAK - 1 - 6.97

MENTOR TOWNSHIP    MENTOR VILLAGE    KIRTLAND HILLS VILLAGE  
LAKE COUNTY

351096

Received SEPT 22, 1960 Time 1:06 P.M.  
 Recorded SEPT 22, 1960  
 Plat Book N Page 38-38-1  
 Signed R. G. Jenkins Recorder Lake County, Ohio  
 Fee 10.80 Paid

38

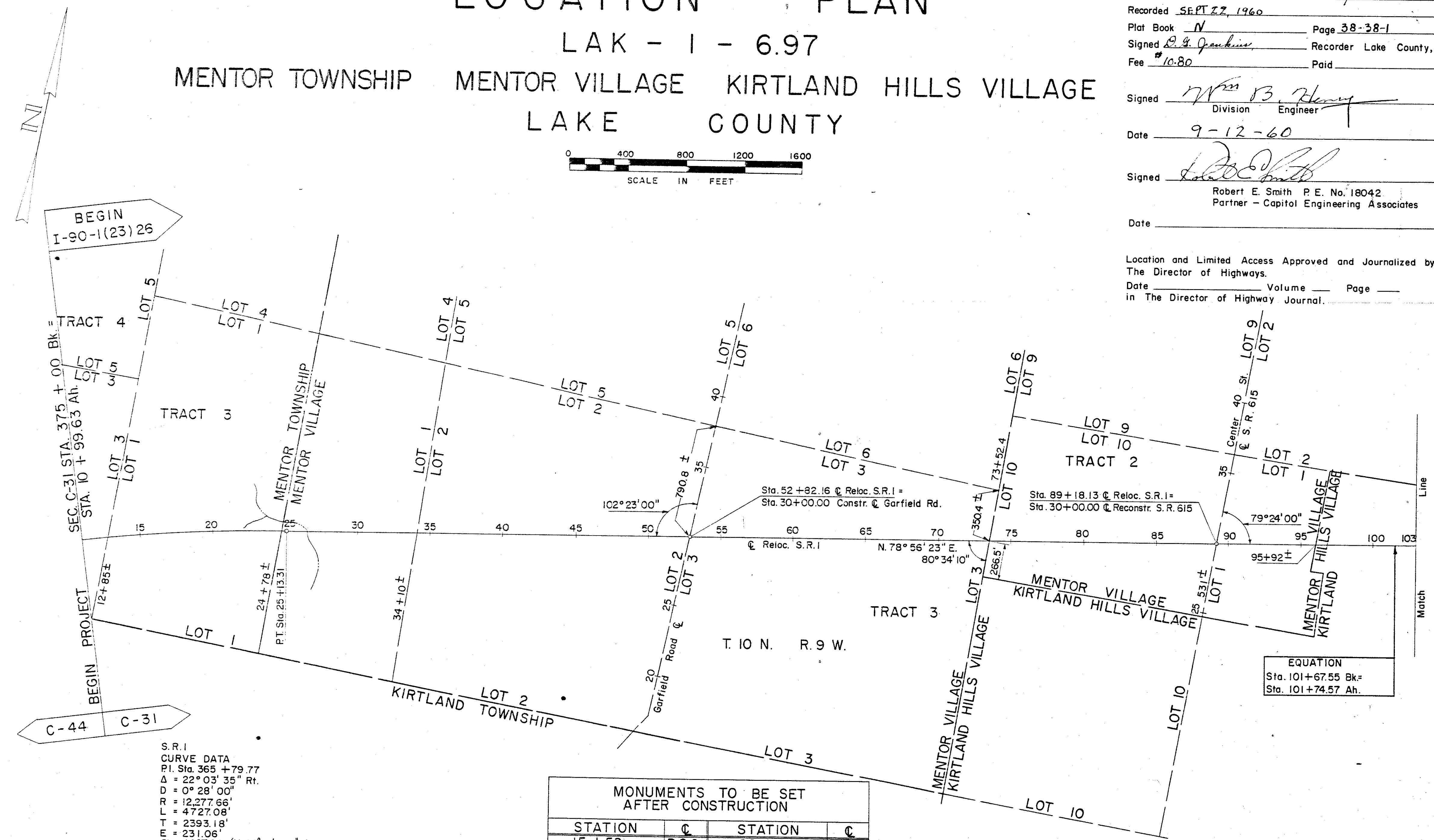
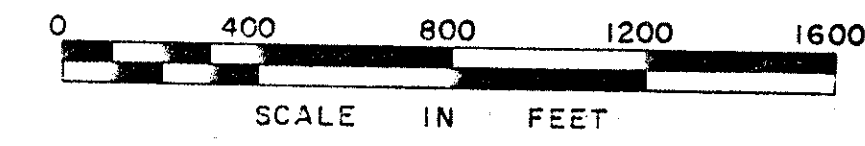
262  
277

1  
16

Signed Wm B. Henry  
 Division Engineer  
 Date 9-12-60

Signed Robert E. Smith  
 Robert E. Smith P. E. No. 18042  
 Partner - Capitol Engineering Associates  
 Date \_\_\_\_\_

Location and Limited Access Approved and Journalized by  
 The Director of Highways.  
 Date \_\_\_\_\_ Volume \_\_\_\_\_ Page \_\_\_\_\_  
 in The Director of Highway Journal.



BEGIN  
I-90-1(23)26

C-44    C-31

S.R.1  
 CURVE DATA  
 P.I. Sta. 365 + 79.77  
 $\Delta = 22^\circ 03' 35''$  Rt.  
 $D = 0^\circ 28' 00''$   
 $R = 12,277.66'$   
 $L = 4,727.08'$   
 $T = 2,393.18'$   
 $E = 231.06'$   
 $Ch = 4697.94$  (N.  $67^\circ 54' 35.5''$  E.)

MONUMENTS TO BE SET AFTER CONSTRUCTION			
STATION	℄	STATION	℄
15 + 50	P.O.C.	60 + 00	P.O.T.
25 + 13.31	P.T.	69 + 00	P.O.T.
34 + 00	P.O.T.	78 + 00	P.O.T.
42 + 00	P.O.T.	87 + 00	P.O.T.
51 + 00	P.O.T.	96 + 00	P.O.T.

EQUATION  
 Sta. 101 + 67.55 Bk =  
 Sta. 101 + 74.57 Ah.

TRANSFER NOT NECESSARY  
 Date 9/22/60  
 John H. Mumfery  
 Lake County Auditor