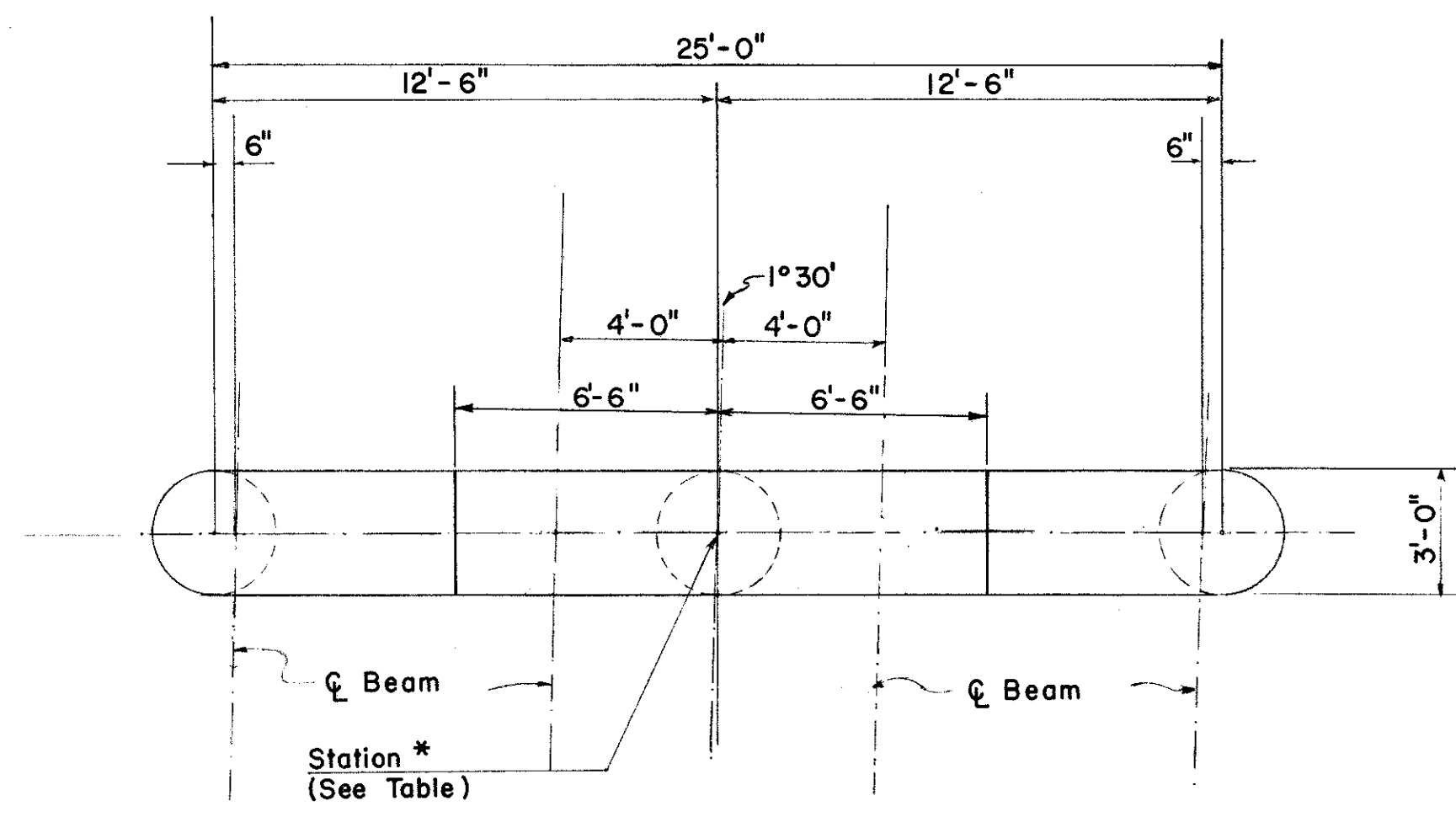


MICROFILMED
JUN 27 1985

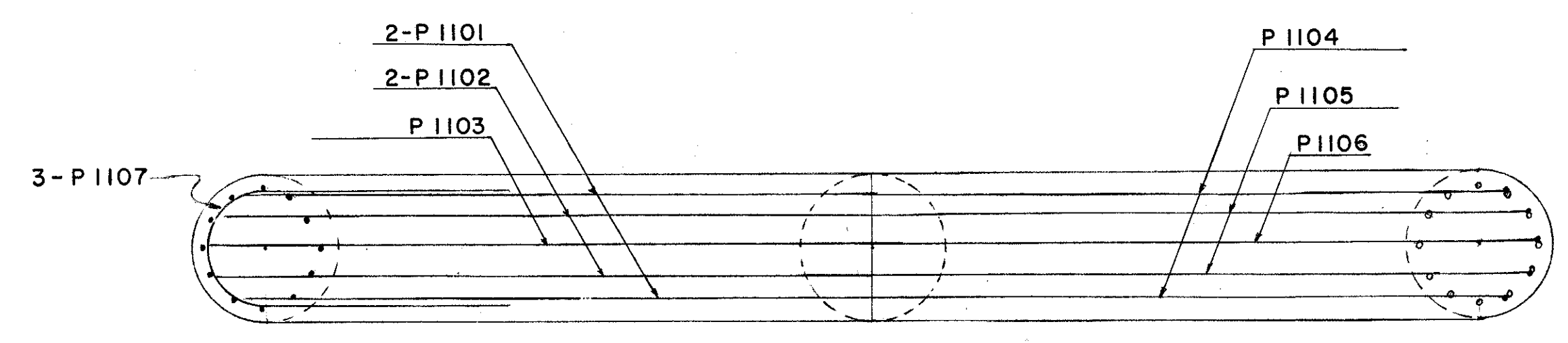
FED. RD. DIVISION	STATE	PROJECT	
2	OHIO		

259
277

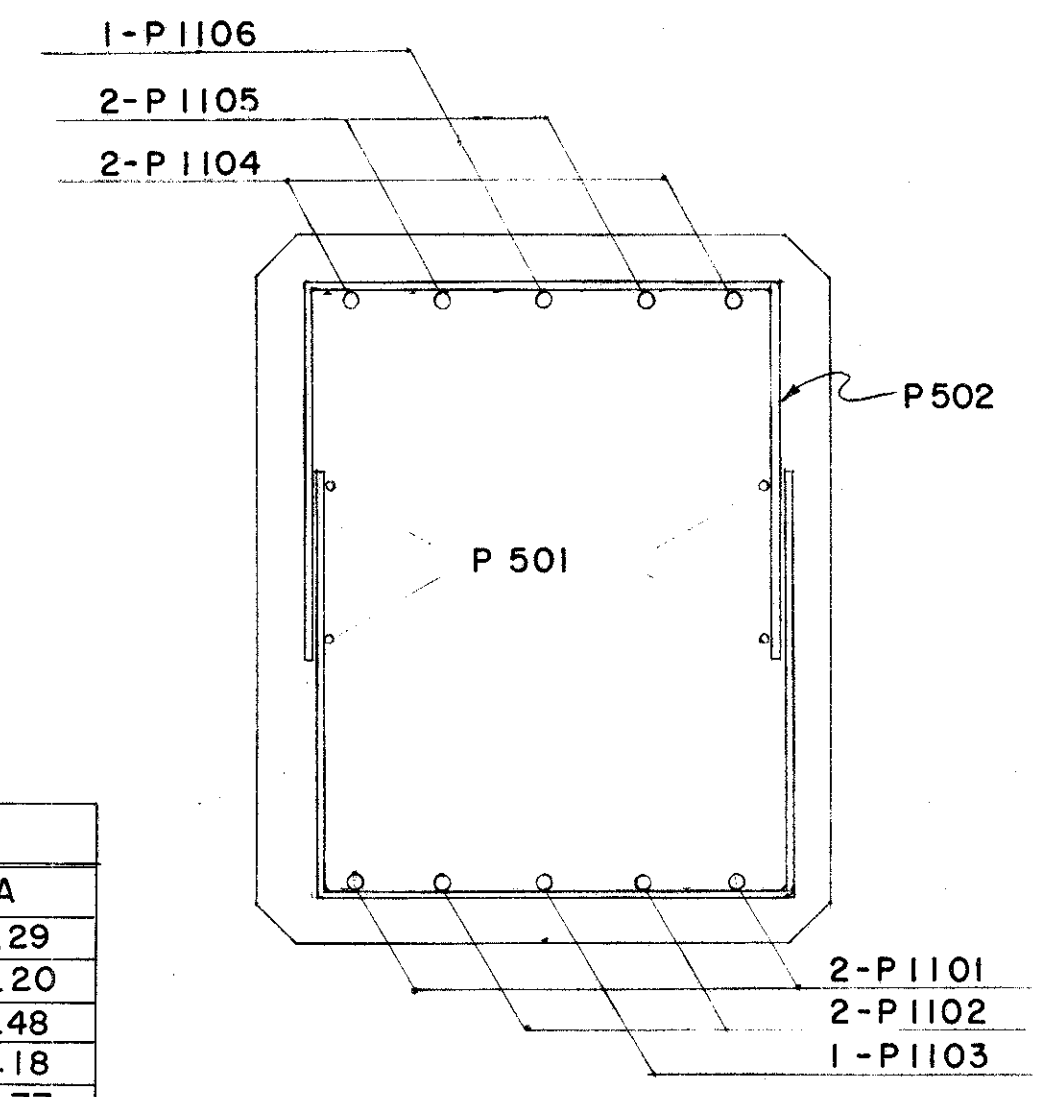
LAKE COUNTY
SEC. LAK - I - 6.97



TYPICAL PIER CAP PLAN

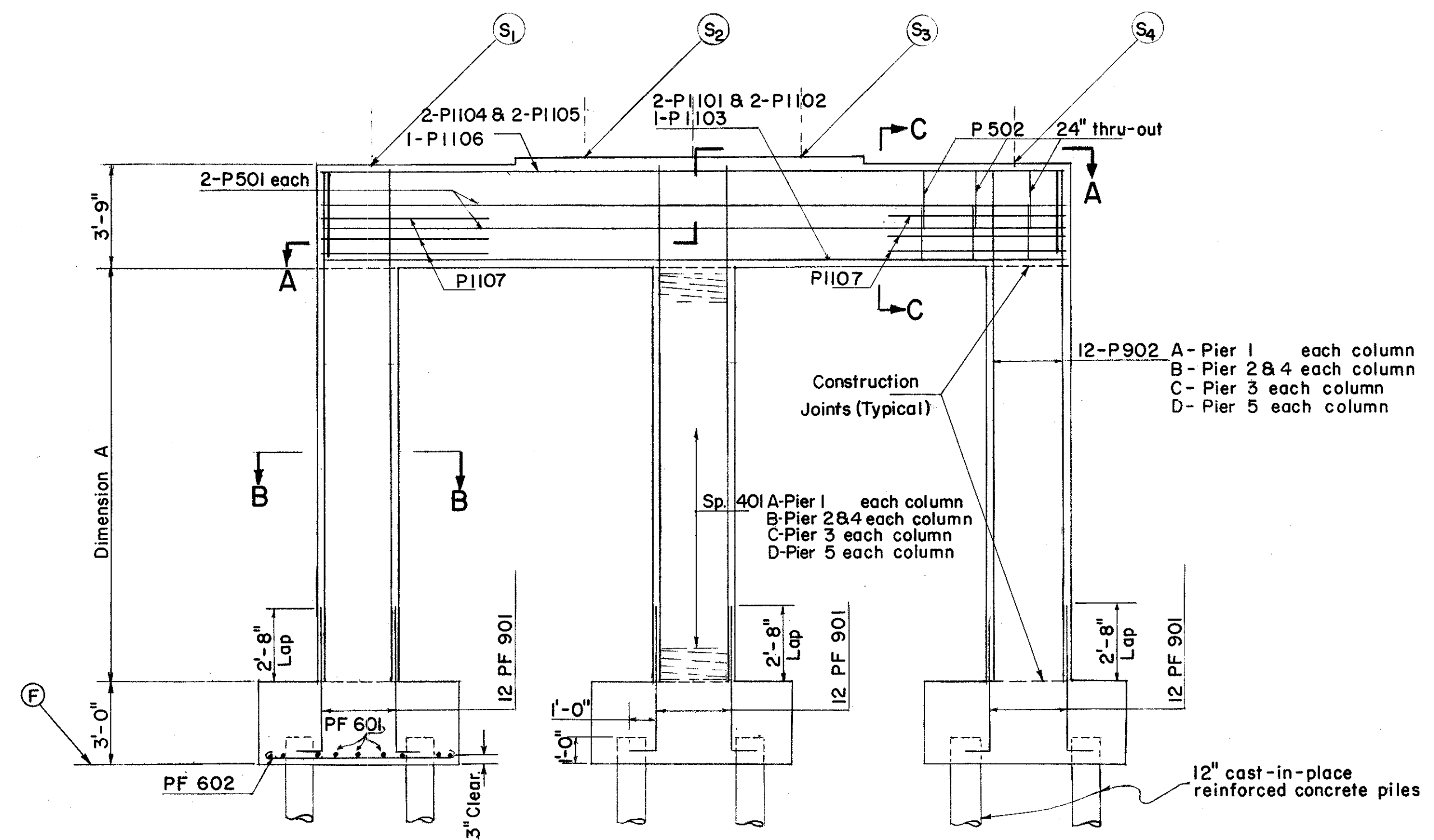


SECTION A-A



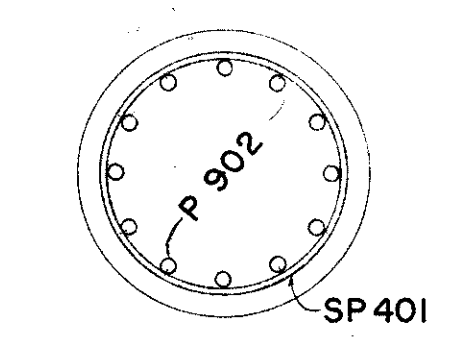
SECTION C-C

LOCATION		TABLE OF ELEVATIONS					
PIER NO.	STATION *	S ₁	S ₂	S ₃	S ₄	F	A
1	28 + 58.2000	787.54	787.64	787.66	787.53	765.5	15.29
2	29 + 29.2000	788.43	788.55	788.55	788.44	765.5	16.20
3	30 + 00.2000	788.73	788.85	788.85	788.73	765.5	16.48
4	30 + 71.2000	788.43	788.56	788.55	788.44	765.5	16.18
5	31 + 42.2000	787.52	787.65	787.64	787.53	766.0	14.77

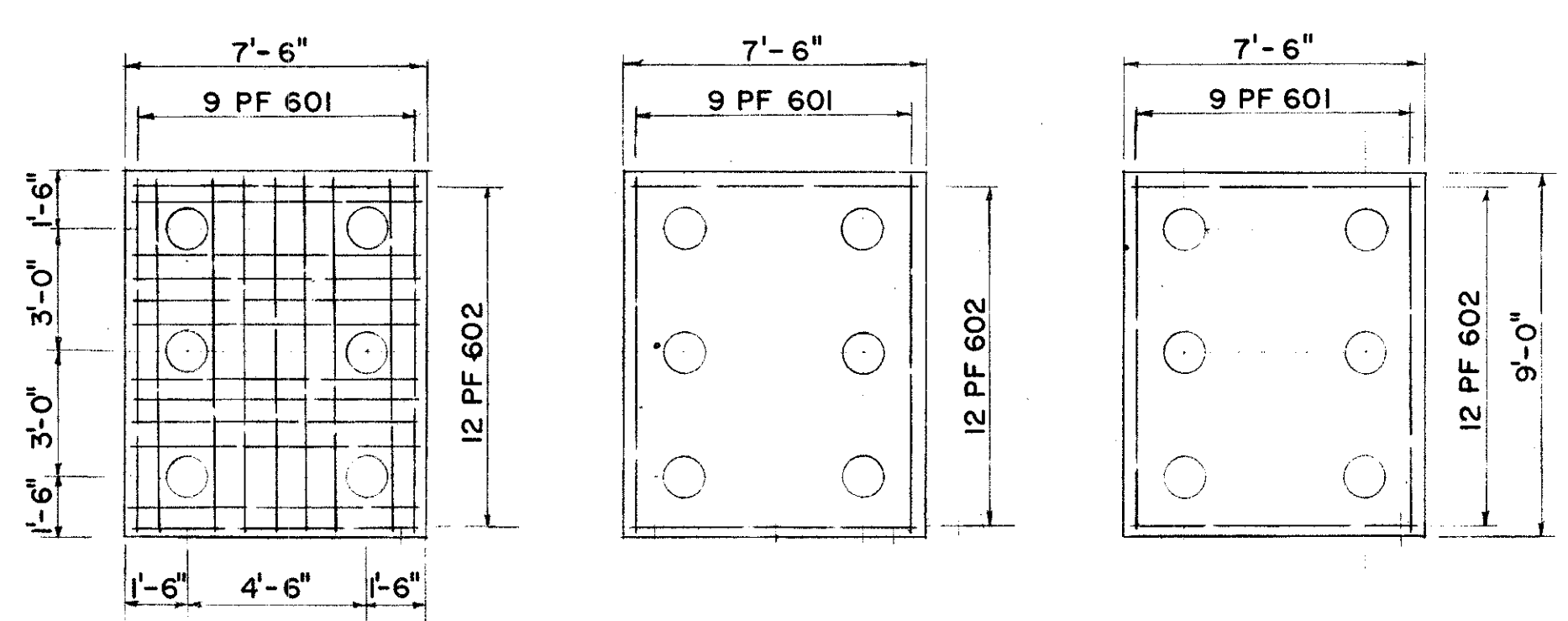


ELEVATION

NOTE:
Piles shall be driven to a minimum bearing capacity of 40 tons per pile for the piers.
Estimated Length of vertical piles 30', battered piles 33'.



SECTION B-B



PLAN OF FOOTING

SEC. C-31					
PREPARED BY CAPITOL ENGINEERING ASSOCIATES, DILLSBURG, PA. FOR					
STATE OF OHIO DEPARTMENT OF HIGHWAYS DIVISION OF DESIGN AND CONSTRUCTION BUREAU OF BRIDGES					
PIERS BRIDGE NO. LAK - I - 0950 S. R. I UNDER HART ROAD LAKE COUNTY STA. 147 + 34.15					
DESIGNED	DRAWN	TRACED	CHECKED	REVIEWED DATE	REVISED
	MCP				