

MICROFILMED
JUN 27 1985

FED. RD. DIVISION	STATE	PROJECT	247 277
2	OHIO		

LAKE COUNTY
SEC. LAK-1-6.97

REFERENCE shall be made to Standard Drawing CSB-2-56, Sheets 2 & 3 of 6, revised 2-2-59 for Details of End Dams, Gutters, Pipe Drains, Scuppers, Curb Plates and End Crossframes.

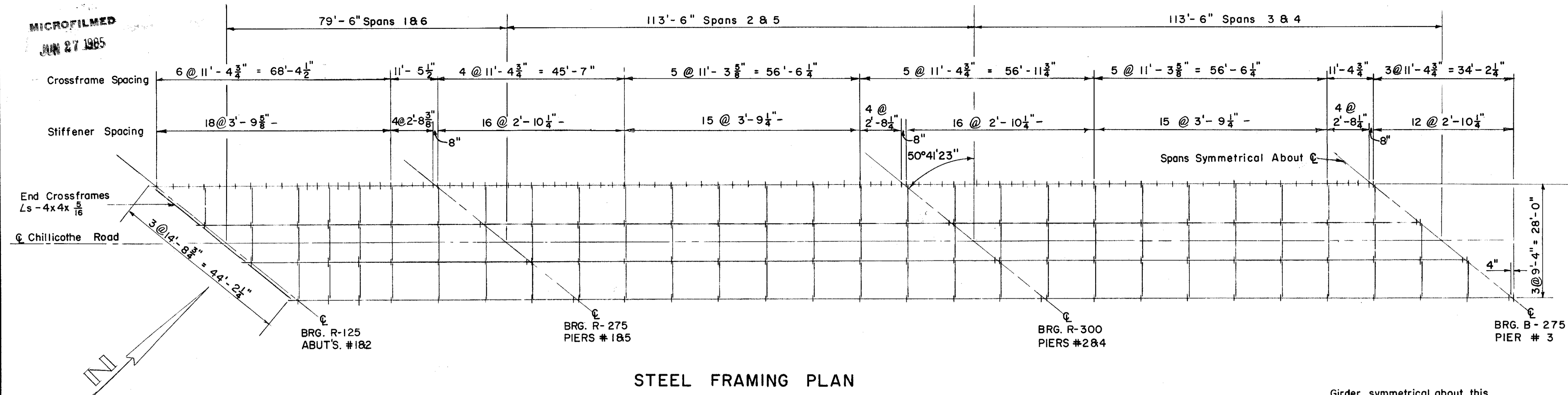
REFERENCE shall be made to Standard Drawing RB-1-55 revised 2-2-59 for Details of Rockers and Bolsters.

REFERENCE shall be made to Standard Drawing AR-1-57 revised 2-2-59 for Details of Aluminum Rolling Type A and Concrete Parapet Details.

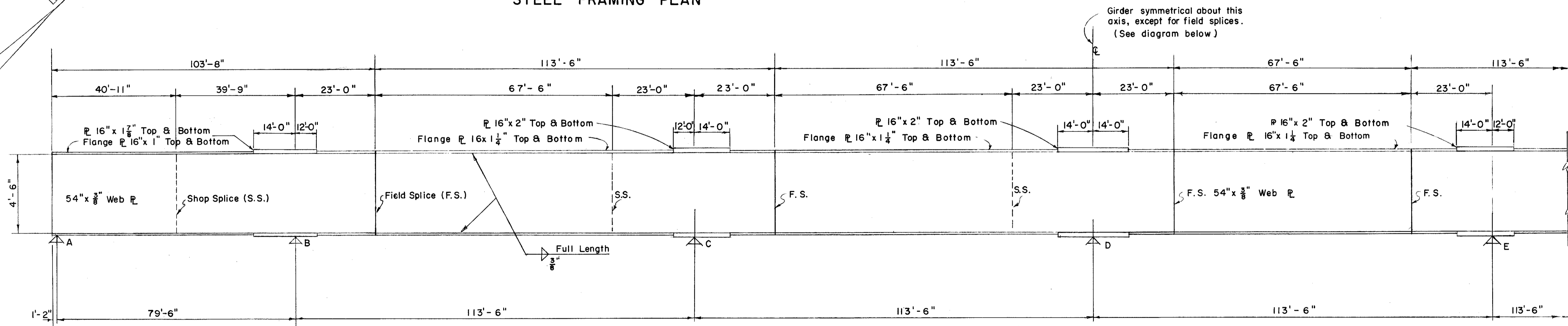
PAINTING: After erection and after the shop coat has been cleaned and, where necessary, repainted in accordance with Sec. 8.04, an additional coat of the same paint as used in the shop shall be applied over the outside face of the outside steel girders and all sides of the bottom flange.

SHOP DRAWINGS for the girders shall include an overall layout with dimensions showing the relative unloaded vertical position of each girder or girder segment with respect to the others in the same girder line and with respect to a full length base or work line taking into account (camber and) the profile of the highway.

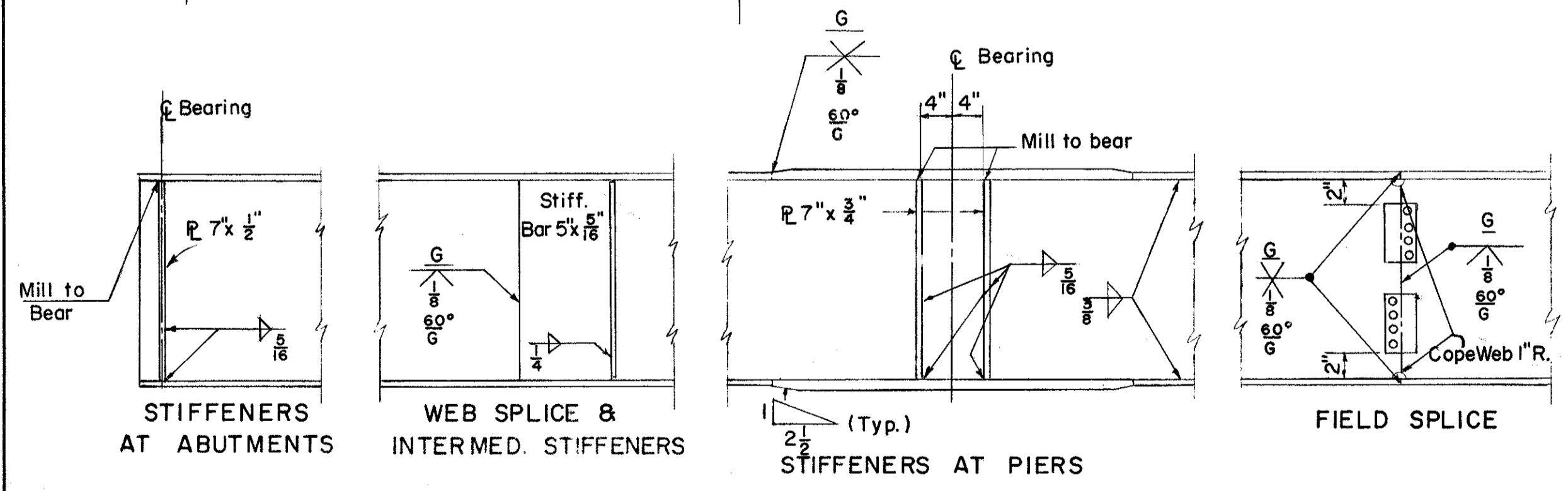
SHOP ASSEMBLY: At least three adjacent girder segments shall be assembled in the shop in their correct unloaded positions as shown on the shop drawing layout required in the above note so that the faced joints for welding the segments together may be checked for proper fit-up.



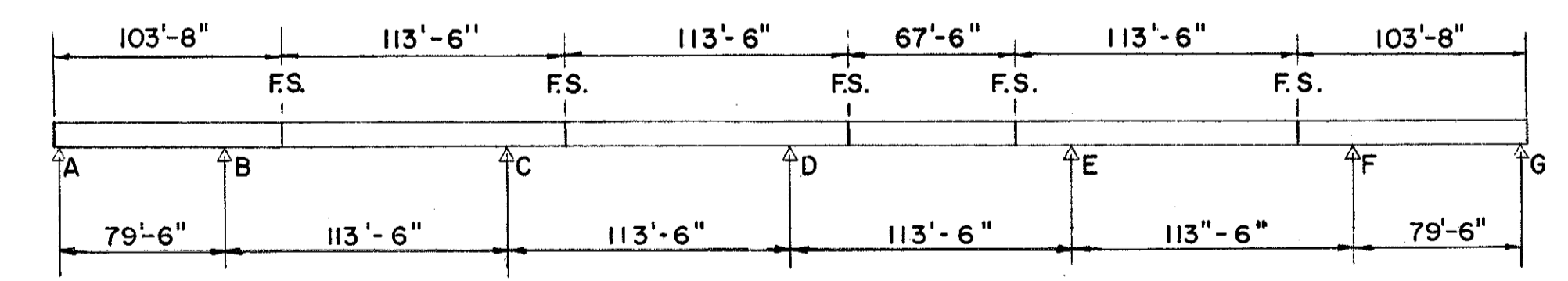
STEEL FRAMING PLAN



GIRDER ELEVATION

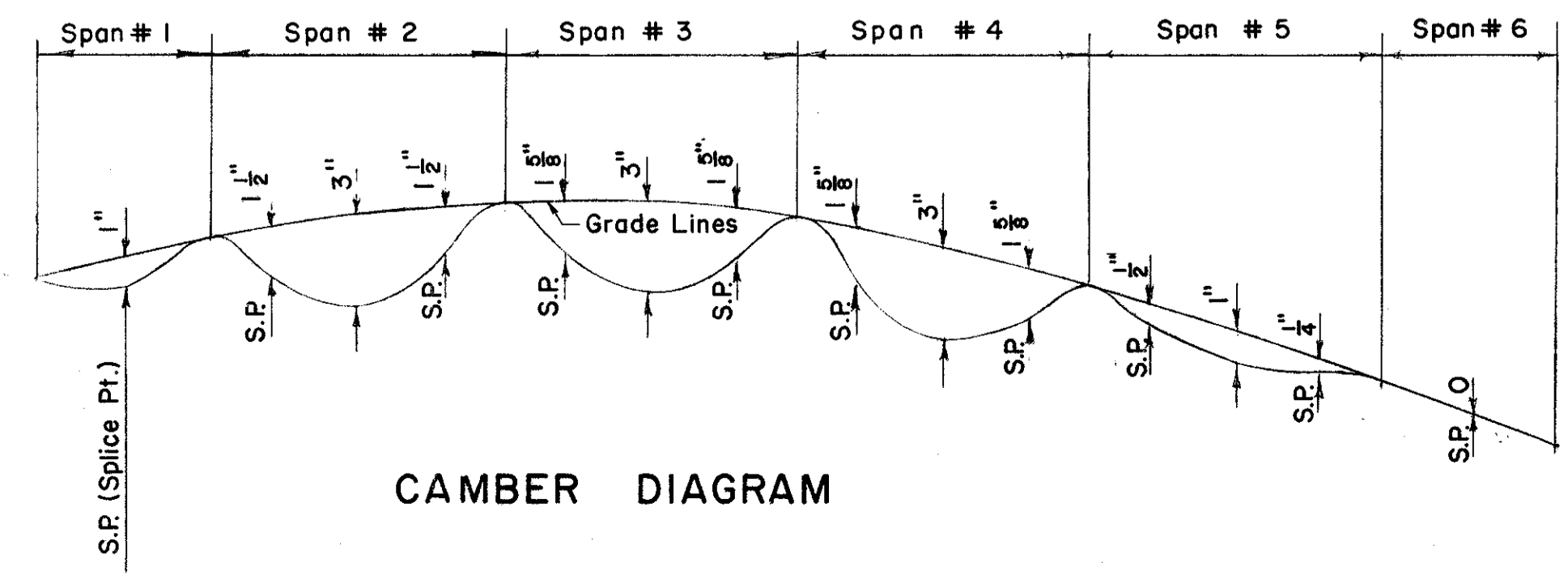


NOTE: V-Groove Butt welds to be finished smooth and flush with the base material on all surfaces. Clip all Stiffeners to clear Flange - Web Welds as required. Stiffeners to be on both faces of all girders.

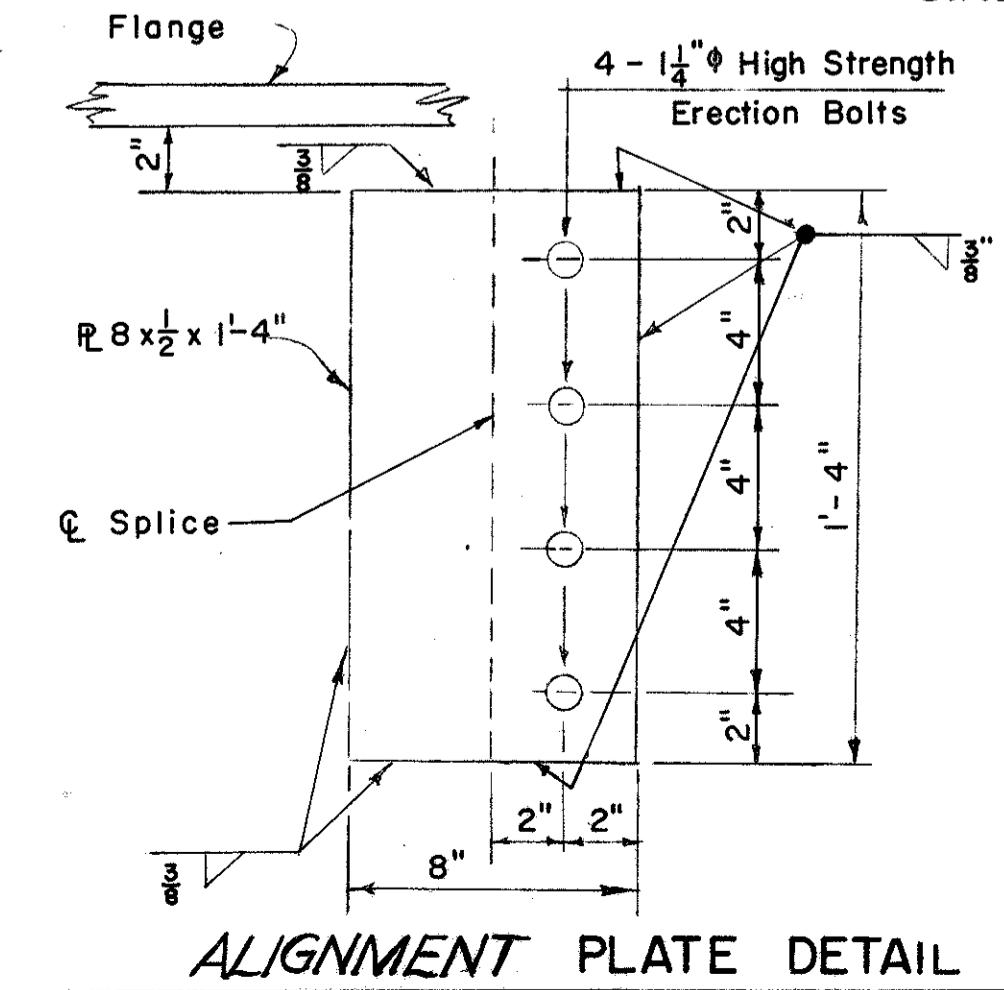


GIRDER SEGMENTS & FIELD SPLICES

	DEFLECTION & CAMBER					
	SPAN NO. 1	SPAN NO. 2	SPAN NO. 3	SPAN NO. 4	SPAN NO. 5	SPAN NO. 6
Deflection due to Weight of Steel	1/8"	1/4"	1/4"	1/4"	1/4"	1/8"
Deflection due to remaining Dead Load	3/8"	5/8"	5/8"	5/8"	5/8"	3/8"
Convexity required for Vertical Curve	1/2"	2"	2"	2"	1/16"	0"
Sum of Deflection and Convexity	1"	2 7/8"	2 7/8"	2 7/8"	15/16"	1/2"
Required Camber	1"	3"	3"	3"	1"	0"



CAMBER DIAGRAM



ALIGNMENT PLATE DETAIL

These Plates shall be used on interior face of girders only. After the girder welds have been completed the erection bolts in outside girders only shall be removed, the holes welded shut and the field welding of erection plates completed.

SEC. C-31

PREPARED BY
CAPITOL ENGINEERING ASSOCIATES, DILLSBURG, PA.
FOR

STATE OF OHIO
DEPARTMENT OF HIGHWAYS
DIVISION OF DESIGN AND CONSTRUCTION
BUREAU OF BRIDGES

STEEL FRAMING PLAN
BRIDGE NO. LAK-1-0906
S.R. UNDER CHILLICOTHE ROAD
LAKE COUNTY
STA. 123 + 07.00

DESIGNED	DRAWN	TRACED	CHECKED	REVIEWED DATE	REVISED
H. M.	J. T.		ORT		