

LAKE COUNTY
SEC. LAK-1-6.97

S.R. 1
CURVE DATA
P.I. Sta. 127+16.48
 $\Delta = 12^\circ 31' 30''$ Rt.
D = $0^\circ 28' 00''$
R = 12277.66'
L = 2683.92'
T = 1347.33'
E = 73.70'

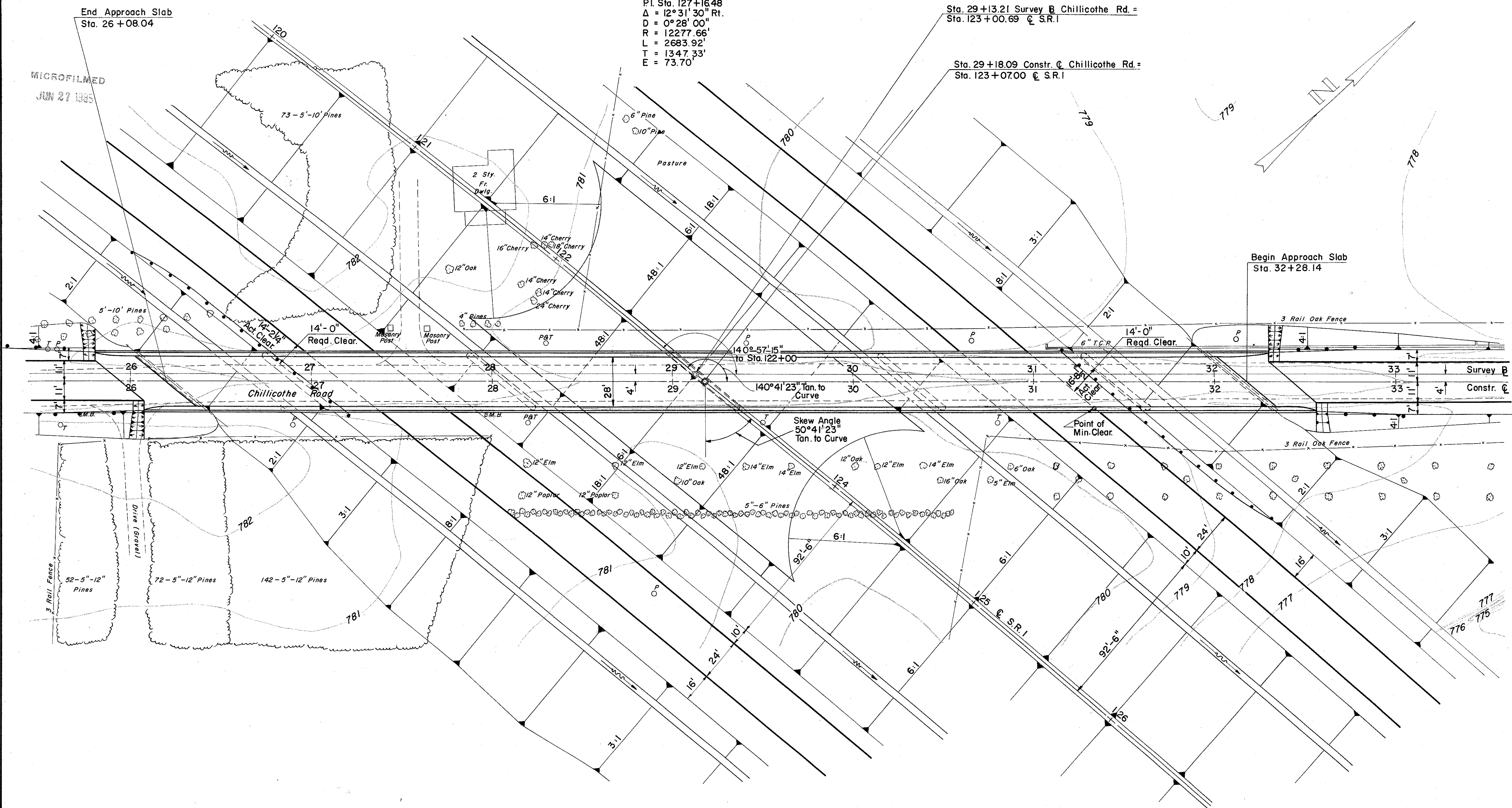
Sta. 29+13.21 Survey \oslash Chillicothe Rd. =
Sta. 123+00.69 \oslash S.R.1

Sta. 29+18.09 Constr. \oslash Chillicothe Rd. =
Sta. 123+07.00 \oslash S.R.1

End Approach Slab
Sta. 26+08.04

Begin Approach Slab
Sta. 32+28.14

MICROFILMED
JUN 27 1985

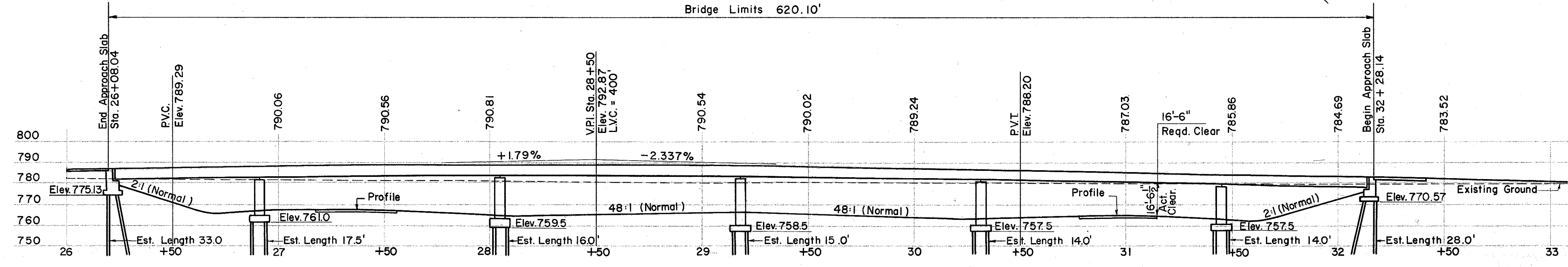


FOUNDATION SOUNDINGS:
Foundation design and foundation quantities are based on a study of rod soundings and soil sampling soundings made at the site. This sounding information may be inspected in the Bureau of Bridges in Columbus or in the Division Office, but the State does not guarantee the accuracy thereof.

B.M. #12 Lag Bolt in Root of 30" Twin Ash
350' Left of \oslash Sta. 123+50
Elev. 782.14'

PROPOSED STRUCTURE
TYPE: Welded, Continuous Steel Girder with Reinforced Concrete Deck & Substructure.
SPANS: 79'-6", 113'-6", 113'-6", 113'-6", 79'-6" c/c Bearings.
ROADWAY: 28'-0" f/f of 2'-2" Safety Curbs.
LOAD FREQUENCY: CF = 130
SKEW: $50^\circ 41' 23''$ Rt.
WEARING SURFACE: $\frac{3}{4}$ " Monolithic.
APPROACH SLABS: 25' Long (Special)
ALIGNMENT: Tangent
TRAFFIC COUNT: A.D.T. 2720 (1975)

Bridge Limits 620.10'



All piles are 12-BP-53

SEC. C-31

PREPARED BY
CAPITOL ENGINEERING ASSOCIATES, DILLSBURG, PA.
FOR

STATE OF OHIO
DEPARTMENT OF HIGHWAYS
DIVISION OF DESIGN AND CONSTRUCTION
BUREAU OF BRIDGES

SITE PLAN
BRIDGE NO. LAK-1-0906
S.R.1 UNDER CHILlicothe ROAD
LAKE COUNTY
STA. 123+07.00

DESIGNED	DRAWN	TRACED	CHECKED	REVIEWED	DATE	REVISED
			DET			