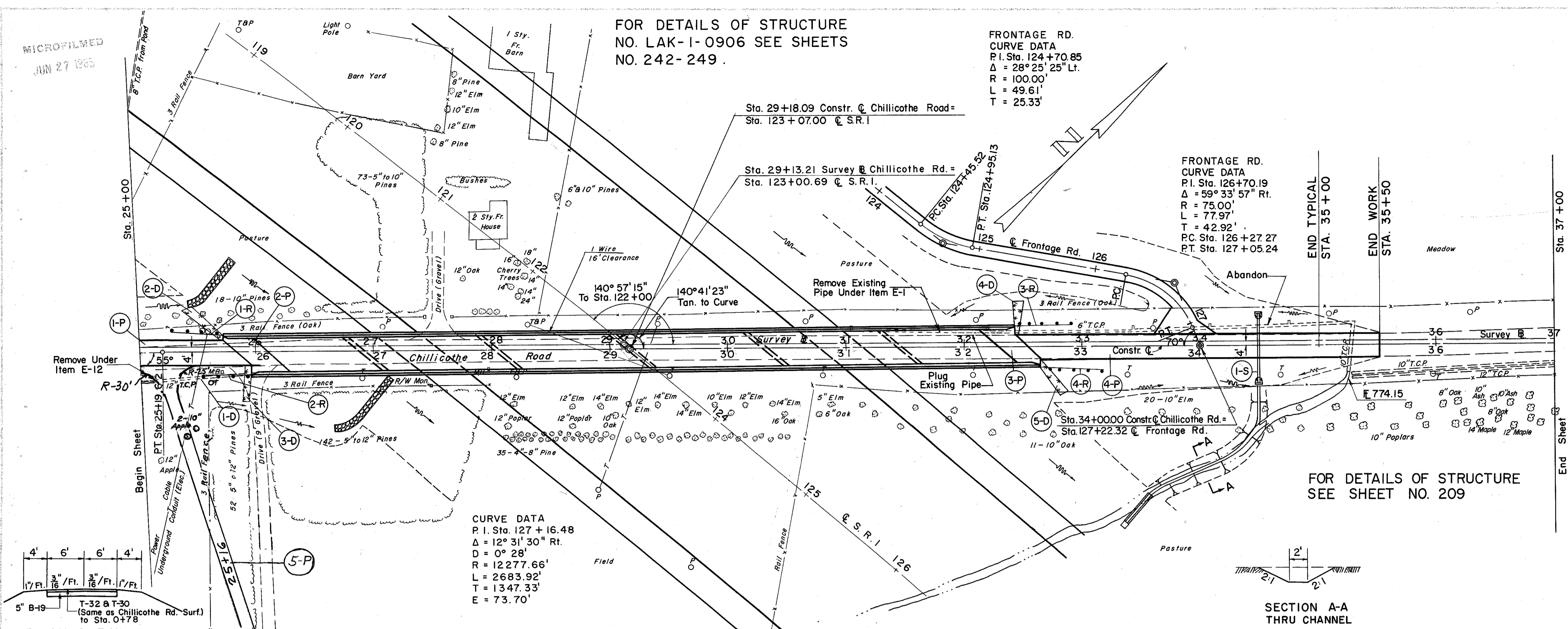


MICROFILMED
JUN 27 1965

FOR DETAILS OF STRUCTURE
NO. LAK-1-0906 SEE SHEETS
NO. 242-249.

FRONTAGE RD.
CURVE DATA
P.I. Sta. 124+70.85
Δ = 28° 25' 25" Lt.
R = 100.00'
L = 49.61'
T = 25.33'

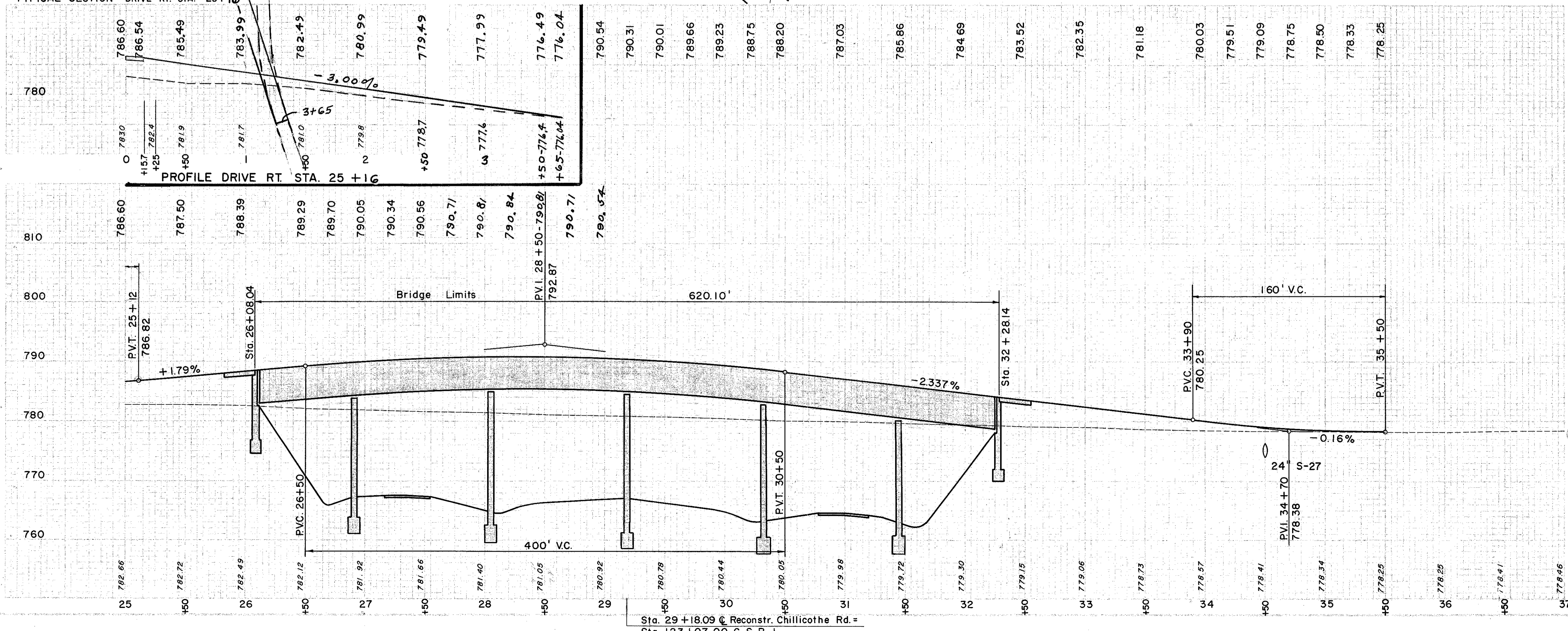
LAKE COUNTY
LAK-1-6.97



FRONTAGE RD.
CURVE DATA
P.I. Sta. 126+70.19
Δ = 59° 33' 57" Rt.
R = 75.00'
L = 77.97'
T = 42.92'
PC. Sta. 126+27.27
PT. Sta. 127+05.24

CURVE DATA
P.I. Sta. 127+16.48
Δ = 12° 31' 30" Rt.
D = 0° 28'
R = 12277.66'
L = 2663.92'
T = 1347.33'
E = 73.70'

SECTION A-A
THRU CHANNEL



(R) ROADWAY

REF. NO.	STATION		SIDE	RAIL/STEEL BEAM STD. TYPE (SHALLOW)
	FROM	TO		
I-R	25+20 ±	25+70 ±	LT	50
2-R	25+45 ±	25+95 ±	RT	50
3-R	32+40 ±	32+90 ±	LT	50
4-R	32+65 ±	33+15 ±	RT	50

(D) DRAINAGE

REF. NO.	STATION		SIDE	SODDING PIPE FOR REMOVED SPECIAL BEAM & SLOPE UNDER PROTECT.
	FROM	TO		
I-D	25+00	26+16	RT	116
2-D	25+80	—	LT	47
3-D	26+03	—	RT	31
4-D	32+32	—	LT	24
5-D	32+58	—	RT	34

(S) STRUCTURES

REF. NO.	STATION		SIDE	EXC. FOR STRUCT.	CHANNEL EXC.	SODDING	CONC. FOR STRUCT. CL "E"	S-27 24" PIPE FOR CULVERTS OR SEC. M-68(b) OR SEC. M-68(b)
	FROM	TO						
I-S	34+50	—	—	37	176	7	0.82	66

(P) PAVEMENT

REF. NO.	STATION		SIDE	ROAD MIX BIT. MATL.	SEAL COAT BIT. MATL.	#46 AGGR. FOR ROAD MIX	#6 AGGR. FOR ROAD CHOKE	#6 AGGR. FOR SEAL COAT	#6 AGGR. FOR ROWS FOR CULVERTS	T-32	T-30	B-19	I-7	I-22	E-1	I-9
	FROM	TO														
I-P	25+00	25+83.04	—	2.23	51	11.4	0.8	1.6	—	—	81	29	77	9	77	19
2-P	25+83.04	26+28.04	—	7.98	181	40.6	2.9	5.8	—	290	290	105	77	88	726	124
3-P	32+28.14	32+53.14	—	1.75	40	9.0	0.7	1.35	—	65	65	55	77	88	400	124
4-P	32+53.14	35+5.0	—	11.96	272	61.0	4.4	8.75	—	436	189	154	154	131	1483	143
5-P	25+16	—	—	—	—	—	—	—	—	—	—	—	—	—	—	—
TOTALS																

EXCAVATION	417 C.Y.
EMBANKMENT	2137 C.Y.
EMBANKMENT - 18"	2522 C.Y.

REV. 4-20-1960
REV. 3-9-1960