

LAKE COUNTY  
LAK-1-6.97

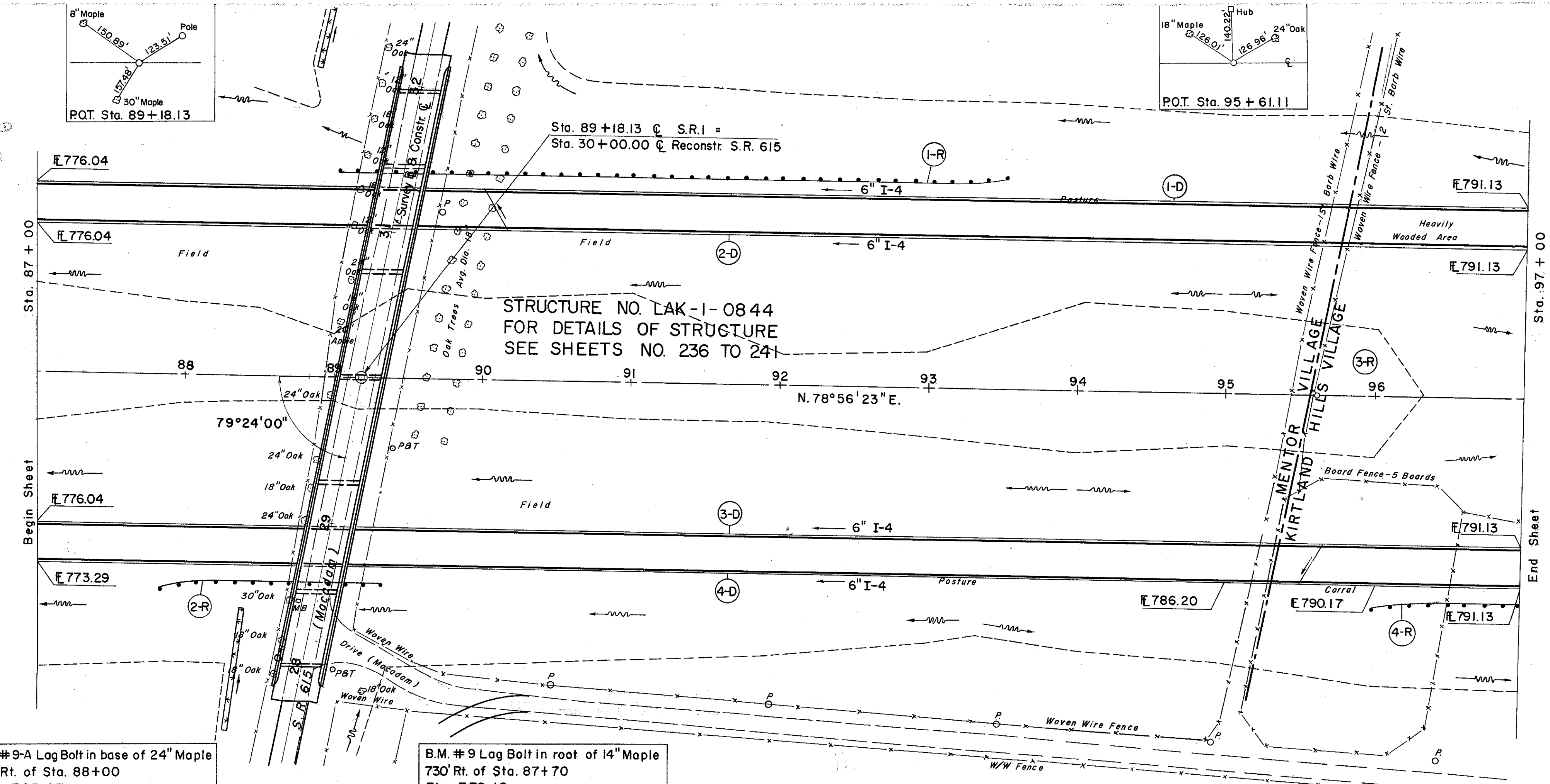
D DRAINAGE

REF NO	STATION	SIDE	I-4		I-5
			6" PIPE UNDERDRAIN		6" WYE
			SHALLOW	DEEP	EA
	FROM	TO	L.F.	DEEP	
1-D	87+00	97+00	LT.	1027	
2-D	87+00	97+00	LT.	1000	
3-D	87+00	97+00	RT.	1000	
4-D	87+00	97+00	RT.	100	927

R ROADWAY

REF NO.	STATION	SIDE	I-15 GUARD RAIL, STEEL BEAM STD. TYPE (D.EEP)	L-6	
				ROAD-SIDE CLEANUP	
				UNITS	
1-R	89+00	93+50	LT.	450	
2-R	87+82	89+32	RT.	150	
3-R	95+60	96+35	CL.	5	
4-R	96+00	97+00	RT.	100	
TOTALS				700	5

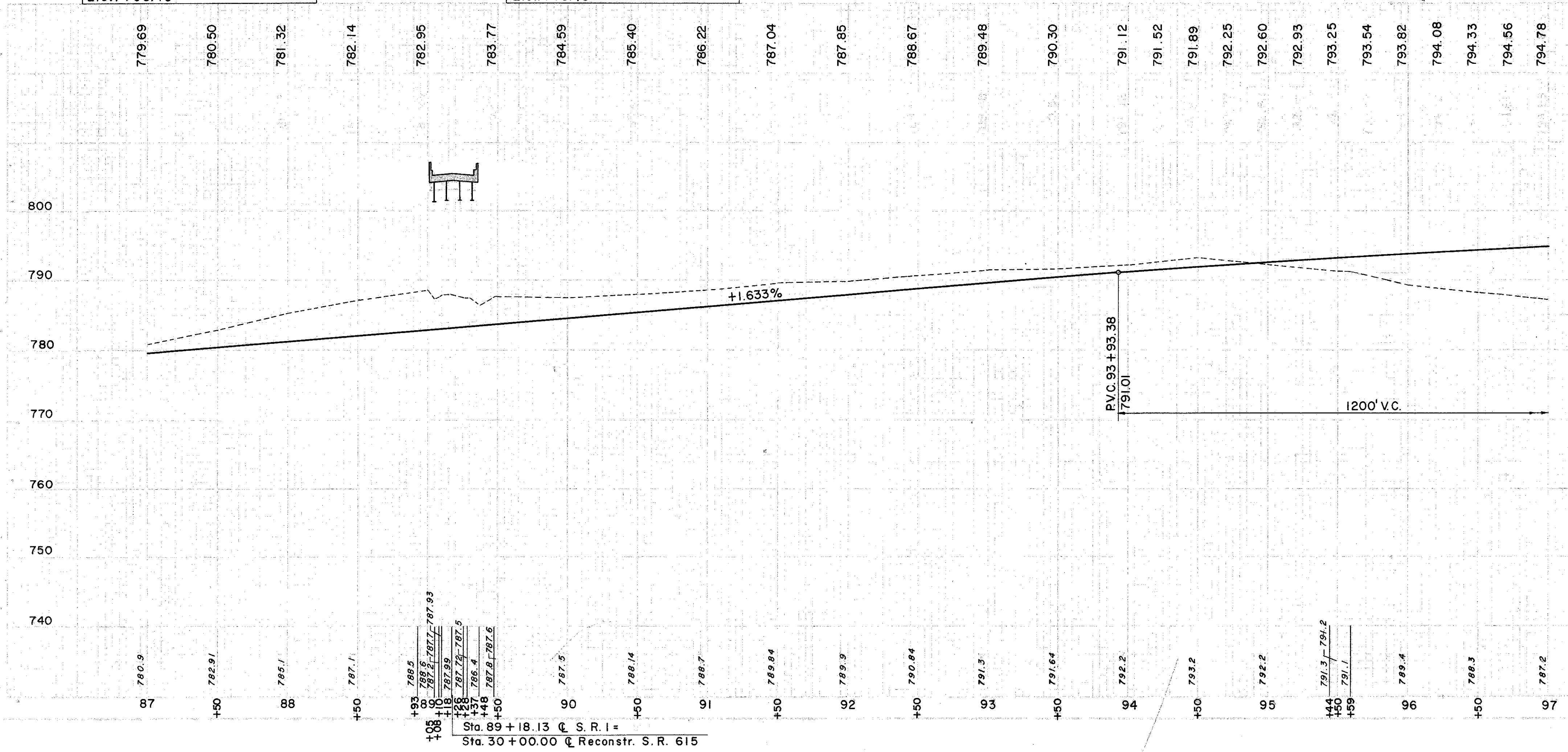
MICROFILMED  
JUN 27 1963



STRUCTURE NO. LAK-1-0844  
FOR DETAILS OF STRUCTURE  
SEE SHEETS NO. 236 TO 241

B.M. #9-A Lag Bolt in base of 24" Maple  
195' Rt. of Sta. 88+00  
Elev. 793.15

B.M. #9 Lag Bolt in root of 14" Maple  
730' Rt. of Sta. 87+70  
Elev. 778.18



Excavation	26,827 C.Y.
Embankment	13,535 C.Y.
Clearing	15,971 C.Y.