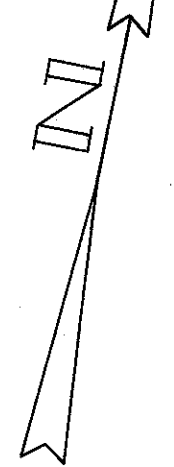
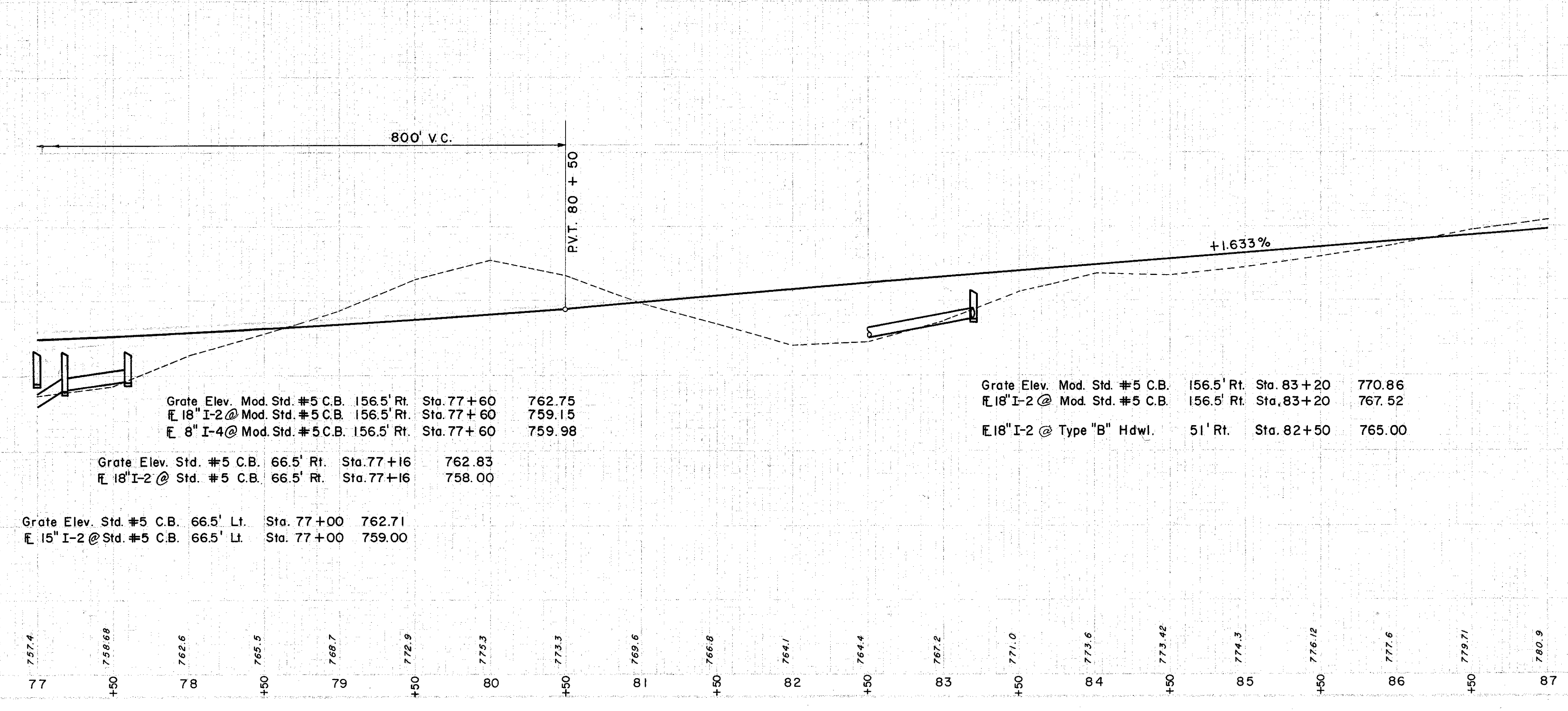
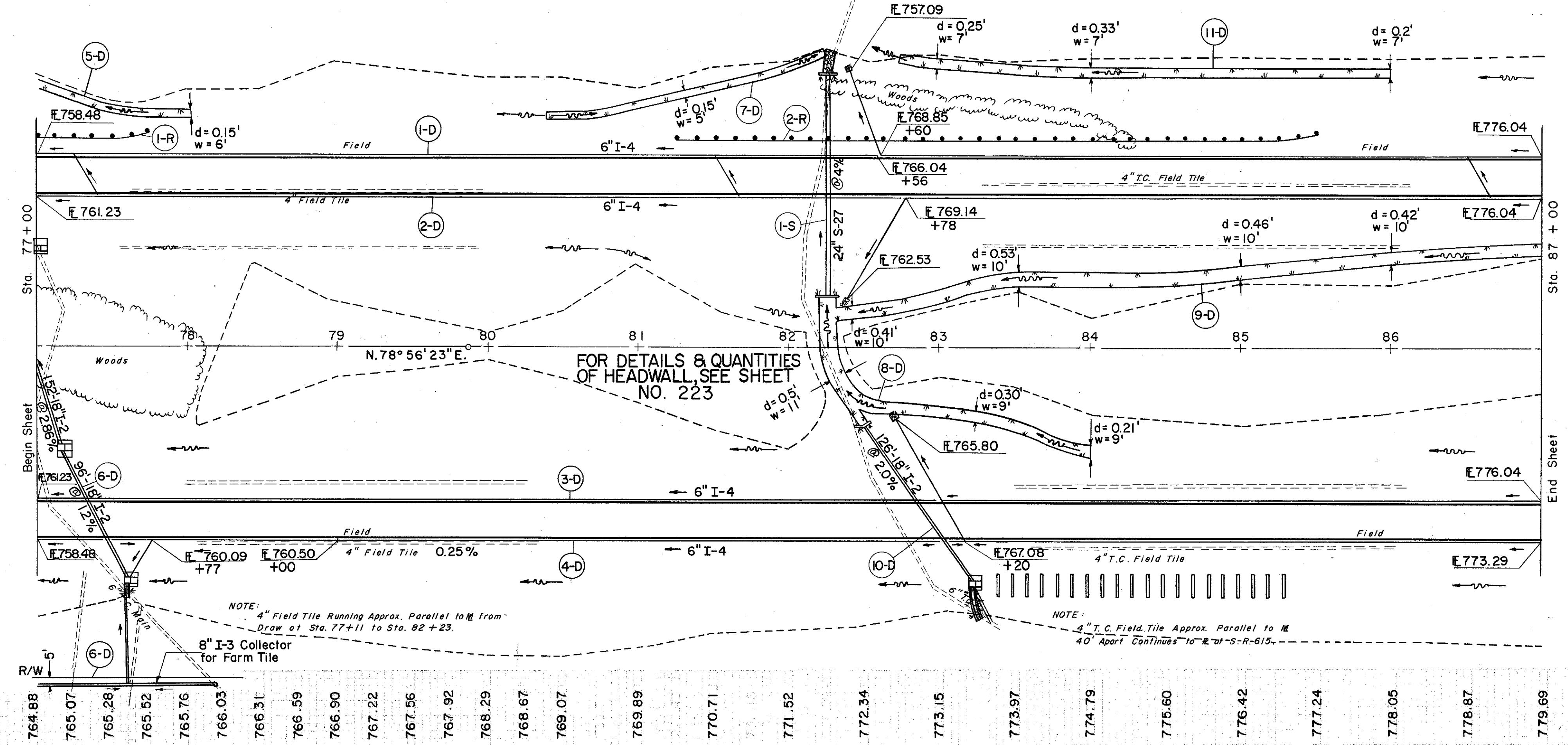


FOR DETAILS OF STRUCTURE
NO. LAK-I-0832
SEE SHEET NO. 220

LAKE COUNTY
LAK-I-6.97



(D) DRAINAGE

REF. NO.	STATION	FROM	TO	CL. 'A' STM. SWR. UNDER PAVT SEC. M-65(D) OR SEC. M-68(D)	8" I-2	8" I-3	10" I-3	6" I-4	8" I-4	I-5	I-8	MOD. STD. #5 CATCH BASIN	I-14	L-10	S-1	S-4	S-29	E-2	
1-D	77+00	87+00	LT.																
2-D	77+00	87+00	LT.																
3-D	77+00	87+00	RT.																
4-D	77+00	87+00	RT.																
5-D	77+00	78+00	LT.																
6-D	77+00	78+20	RT.																
7-D	80+50	82+25	LT.																
8-D	82+25	84+00	RT.																
9-D	82+32	87+00	LT.																
10-D	82+50	83+20	RT.																
11-D	82+40	86+00	LT.																
TOTALS																			

(S) STRUCTURES

REF. NO.	STATION	FROM	TO	E-2	E-3	I-10	L-10	S-1	S-4	S-27
I-S	82+25									
TOTALS										

(R) ROADWAY

REF. NO.	STATION	FROM	TO	I-15	TOTALS
I-R	77+00	77+75	LT.	425	
2-R	81+25	85+50	LT.	500	
TOTALS					925

Excavation	30,860 C.Y.
Concrete	17,525 C.Y.
Reinforcement	20,680 C.Y.