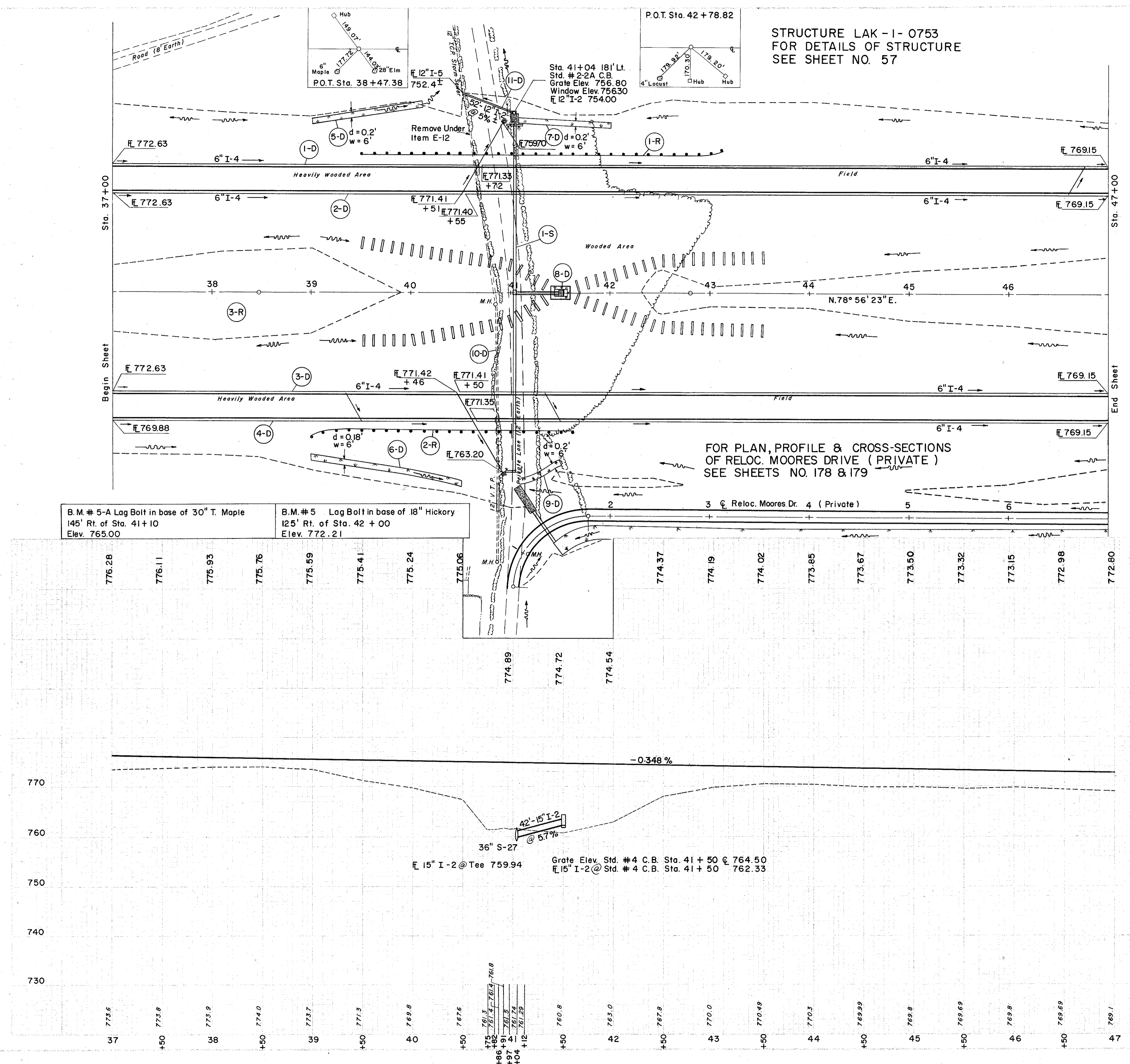
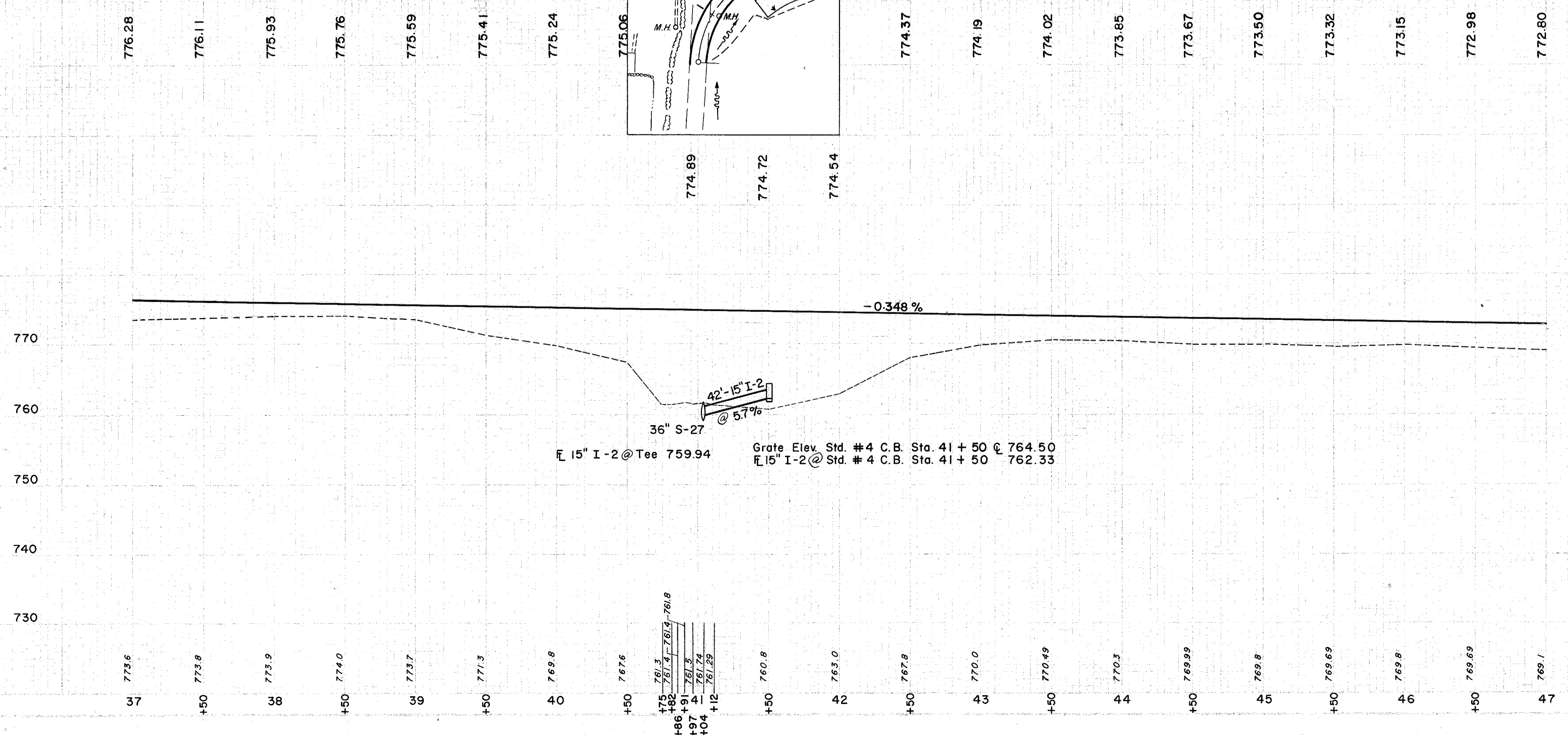


STRUCTURE LAK-1-0753  
FOR DETAILS OF STRUCTURE  
SEE SHEET NO. 57



B.M. # 5-A Lag Bolt in base of 30" T. Maple  
145' Rt. of Sta. 41+10  
Elev. 765.00

B.M. # 5 Lag Bolt in base of .18" Hickory  
125' Rt. of Sta. 42 + 00  
Elev. 772.21



REF. NO.	STATION	STATION		SIDE	STATION		L.F.	C.Y.	S.Y.	S-29	E-12	I-2	I-5	I-8	I-10	I-5	I-5	I-10	I-15	L-6	
		FROM	TO		FROM	TO															FROM
I-D	37+00	47+00	LT	10	1022	8	10	1022	8	0.3	400	52									
2-D	37+00	47+00	RT	10	995	8	10	995	8												
3-D	37+00	47+00	RT	10	995	8	10	995	8	0.3											
4-D	37+00	47+00	RT	10	663	8	10	663	8												
5-D	39+00	40+50	LT																		
6-D	39+00	40+50	RT																		
7-D	41+00	42+00	LT	42																	
8-D	41+50	41+50	RT																		
9-D	41+00	41+50	RT																		
10-D	40+50	41+00	LT																		
11-D	40+50	41+00	LT																		

(S) STRUCTURES

(R) ROADWAY

REF. NO.	STATION	STATION		SIDE	STATION		L.F.	C.Y.	S.Y.	S-27	I-10	I-5	I-10
		FROM	TO		FROM	TO							
E-2	37+00	47+00	LT	5	237	5	5	237	5	838	346	6	6
E-3	37+00	47+00	RT	5	995	5	5	995	5	838	346	6	6
S-1	37+00	47+00	RT	82			82						
S-4	37+00	47+00	RT	388			388						
I-15	39+53	43+15	LT	362.5			362.5						
I-6	39+03	41+65	RT	262.5			262.5						
TOTALS				625			625						

5,237 C.Y.  
34,619 C.Y.  
40,850 C.Y.