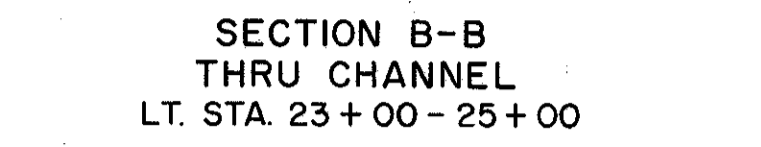
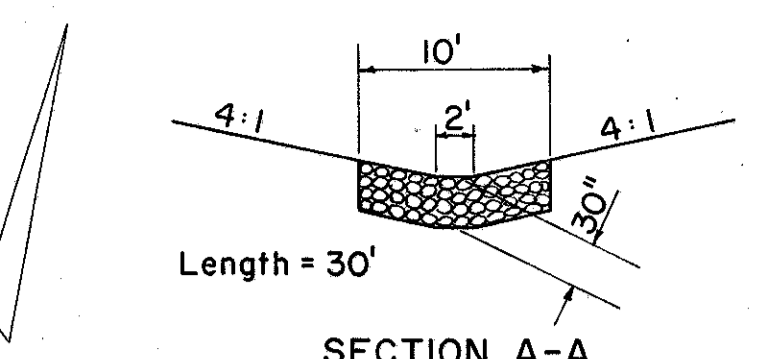
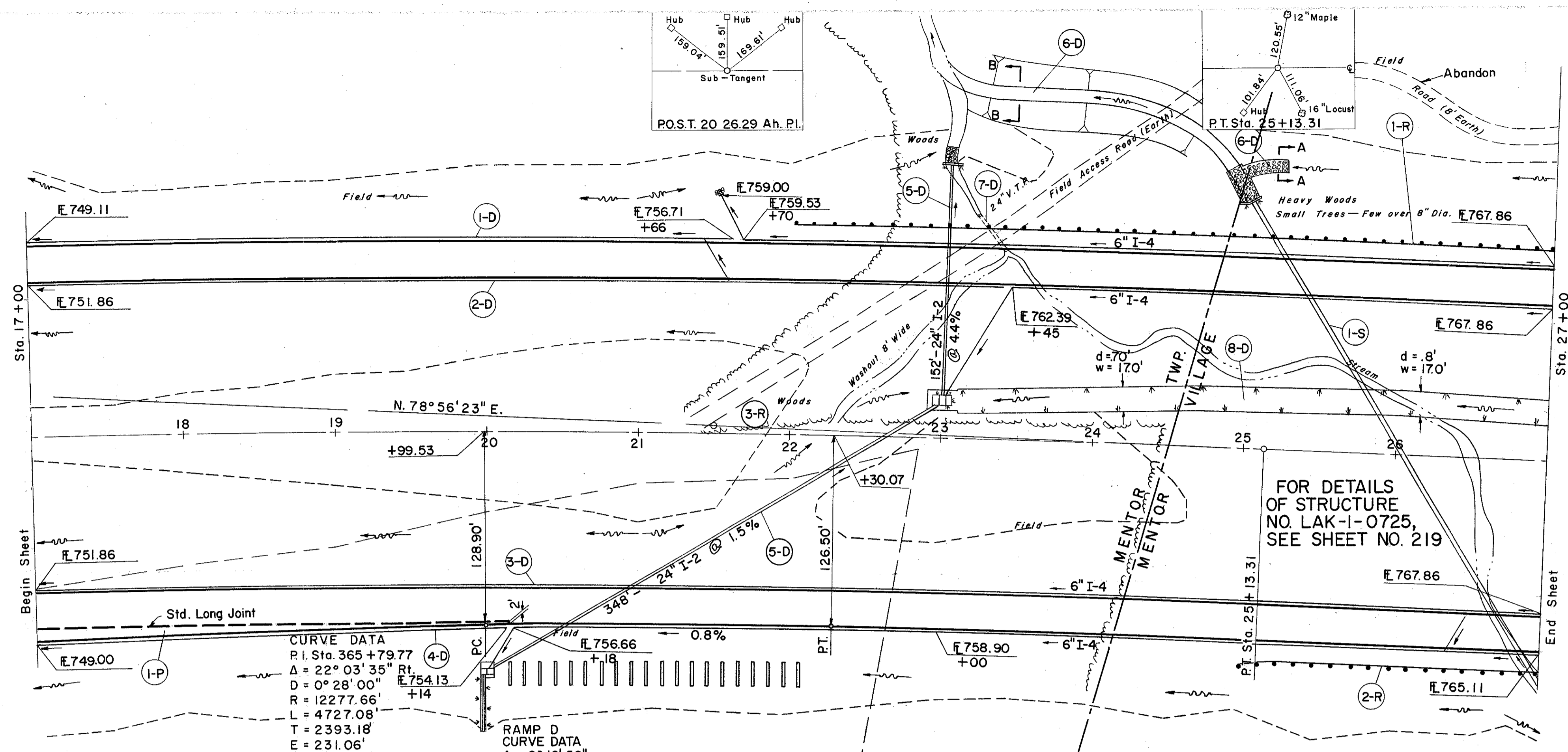


LAKE COUNTY  
LAK-I-6.97



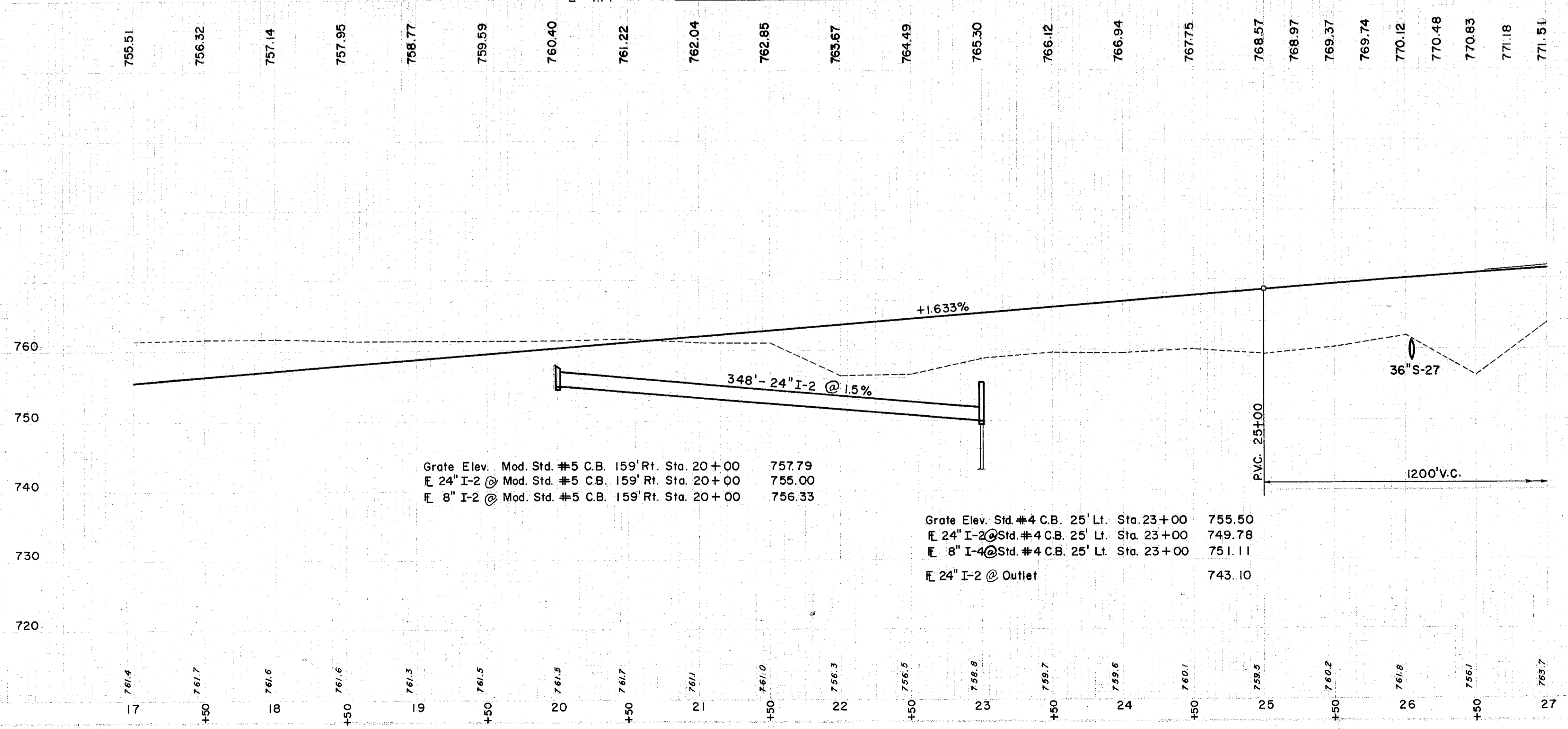
FOR DETAILS OF STRUCTURE NO. LAK-I-0725, SEE SHEET NO. 219

**CURVE DATA**  
 P.I. Sta. 365+79.77  
 Δ = 22° 03' 35" Rt.  
 D = 0° 28' 00" Rt.  
 R = 12277.66'  
 L = 4727.08'  
 T = 2393.18'  
 E = 231.06'

**RAMP D CURVE DATA**  
 P.I. Sta. 22+00  
 Δ = 2° 16' 56" Rt.  
 D = 0° 28' 00" Rt.  
 R = 12277.66'  
 L = 4727.08'  
 T = 2393.18'  
 E = 231.06'

B.M. #3 Lag Bolt in base of 10" Elm  
 260' Lt. of Sta. 22+00  
 Elev. 756.50

B.M. #3-A Lag Bolt in root of 16" W. Cherry  
 94' Lt. of Sta. 22+90  
 Elev. 752.24



Grate Elev. Mod. Std. #5 C.B. 159' Rt. Sta. 20+00 757.79  
 E 24" I-2 @ Mod. Std. #5 C.B. 159' Rt. Sta. 20+00 755.00  
 E 8" I-2 @ Mod. Std. #5 C.B. 159' Rt. Sta. 20+00 756.33

Grate Elev. Std. #4 C.B. 25' Lt. Sta. 23+00 755.50  
 E 24" I-2 @ Std. #4 C.B. 25' Lt. Sta. 23+00 749.78  
 E 8" I-4 @ Std. #4 C.B. 25' Lt. Sta. 23+00 751.11  
 E 24" I-2 @ Outlet 743.10

REF. NO.	STATION	FROM	TO	DESCRIPTION	QTY	UNIT
I-10	26+04	26+04	26+04	CONC. FOR STRUCT. CL. C	16.9	C.Y.
I-10	26+04	26+04	26+04	REIN. STEEL	771	LBS.
I-10	26+04	26+04	26+04	MOD. STD. #5 CATCH BASIN	1	EA.
I-10	26+04	26+04	26+04	STD. #4 CATCH BASIN	1	EA.
I-10	26+04	26+04	26+04	DUMPED PAVED ROCK GUTTER CHANNEL TYPE 1	28	L.F.
I-10	26+04	26+04	26+04	CONC. FOR STRUCT. CL. C	5.2	C.Y.
I-10	26+04	26+04	26+04	REIN. STEEL	218	LBS.
E-2	27+00	27+00	27+00	EXC. FOR STRUCT.	10	C.Y.
S-29	27+00	27+00	27+00	DRAINAGE OF STRUCT. NO. 2	0.3	C.Y.
E-3	27+00	27+00	27+00	PIPE CHANNEL REMOVED OVER 15"	1845	L.F.
E-12	27+00	27+00	27+00	PIPE OVER 15"	30	L.F.
I-5	27+00	27+00	27+00	RAILSTEEL BEAM	500	L.F.
L-6	27+00	27+00	27+00	ROADSIDE CLEANUP	200	UNITS
I-1	21+30	21+30	21+30	SIDE	700	L.F.
I-2	21+30	21+30	21+30	STANDARD DEEP	200	L.F.
I-3	21+30	21+30	21+30	UNITS	4	UNITS
<b>TOTALS</b>					<b>700</b>	<b>L.F.</b>

REF. NO.	STATION	FROM	TO	DESCRIPTION	QTY	UNIT
I-1	22+00	22+00	22+00	SIDE	500	L.F.
I-2	25+00	25+00	25+00	STANDARD DEEP	200	L.F.
I-3	21+30	21+30	21+30	UNITS	4	UNITS
<b>TOTALS</b>					<b>700</b>	<b>L.F.</b>

REF. NO.	STATION	FROM	TO	DESCRIPTION	QTY	UNIT
I-10	26+04	26+04	26+04	CONC. FOR STRUCT. CL. C	16.9	C.Y.
I-10	26+04	26+04	26+04	REIN. STEEL	771	LBS.
I-10	26+04	26+04	26+04	MOD. STD. #5 CATCH BASIN	1	EA.
I-10	26+04	26+04	26+04	STD. #4 CATCH BASIN	1	EA.
I-10	26+04	26+04	26+04	DUMPED PAVED ROCK GUTTER CHANNEL TYPE 1	28	L.F.
I-10	26+04	26+04	26+04	CONC. FOR STRUCT. CL. C	5.2	C.Y.
I-10	26+04	26+04	26+04	REIN. STEEL	218	LBS.
E-2	27+00	27+00	27+00	EXC. FOR STRUCT.	10	C.Y.
S-29	27+00	27+00	27+00	DRAINAGE OF STRUCT. NO. 2	0.3	C.Y.
E-3	27+00	27+00	27+00	PIPE CHANNEL REMOVED OVER 15"	1845	L.F.
E-12	27+00	27+00	27+00	PIPE OVER 15"	30	L.F.
I-5	27+00	27+00	27+00	RAILSTEEL BEAM	500	L.F.
L-6	27+00	27+00	27+00	ROADSIDE CLEANUP	200	UNITS
I-1	21+30	21+30	21+30	SIDE	700	L.F.
I-2	21+30	21+30	21+30	STANDARD DEEP	200	L.F.
I-3	21+30	21+30	21+30	UNITS	4	UNITS

REF. NO.	STATION	FROM	TO	DESCRIPTION	QTY	UNIT
I-1	17+00	17+00	17+00	SIDE	500	L.F.
I-2	25+00	25+00	25+00	STANDARD DEEP	200	L.F.
I-3	21+30	21+30	21+30	UNITS	4	UNITS

PAVEMENT 18 35,773 C.Y.  
 GRADATION 19,117 C.Y.  
 TOTAL 54,890 C.Y.