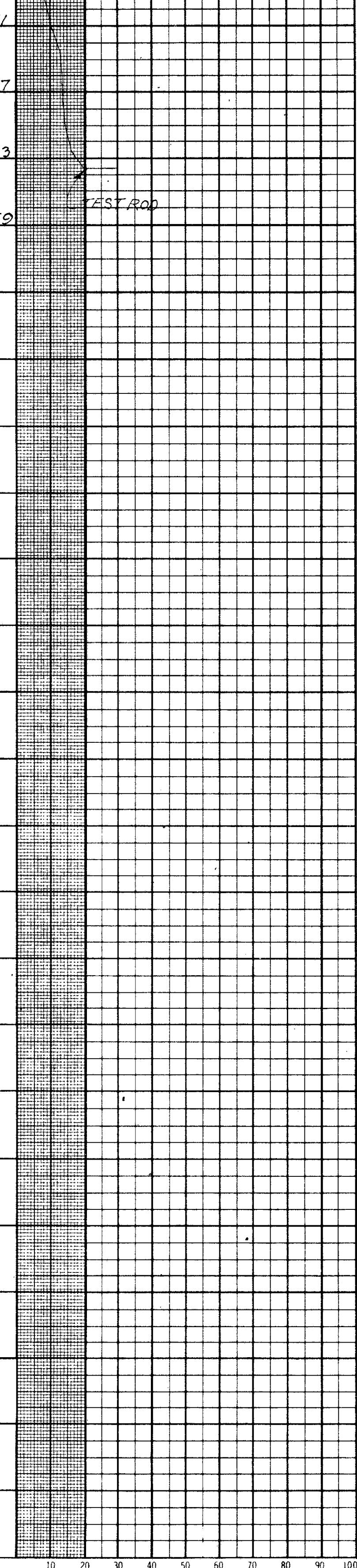


AUG 12 1960

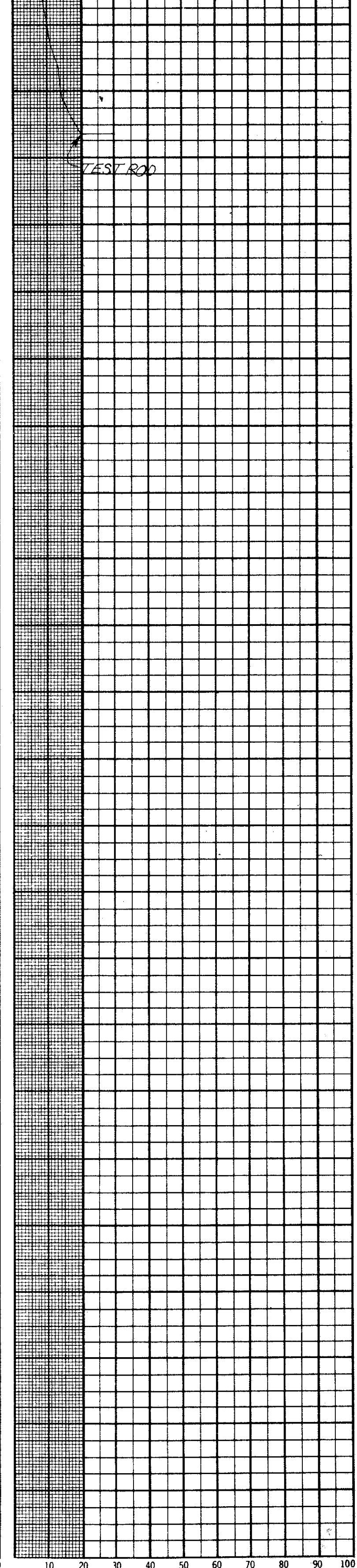
Test Location No. 1  
Station & Offset 207+01.60 RT  
REAR ABUTMENT  
Surface Elev. 777.4 Water Elev. DRY-Hole Open

Piling \_\_\_\_\_  
Hammer \_\_\_\_\_  
Formula \_\_\_\_\_  
Reference \_\_\_\_\_  
Rod Condition POINT BENT-A



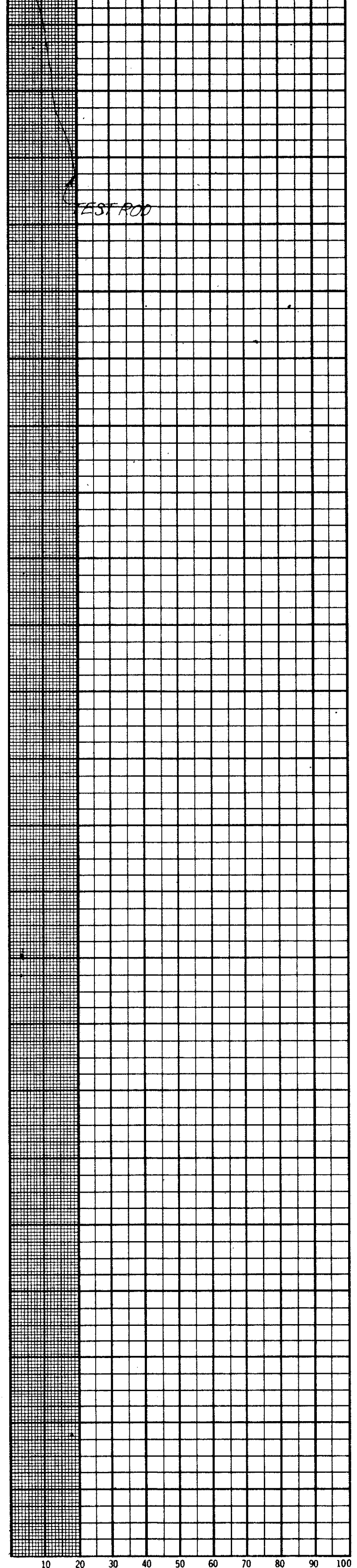
Test Location No. 3  
Station & Offset 207+39.61 LT  
REAR ABUTMENT  
Surface Elev. 778.4 Water Elev. DRY-Hole Open

Piling \_\_\_\_\_  
Hammer \_\_\_\_\_  
Formula \_\_\_\_\_  
Reference \_\_\_\_\_  
Rod Condition GOOD



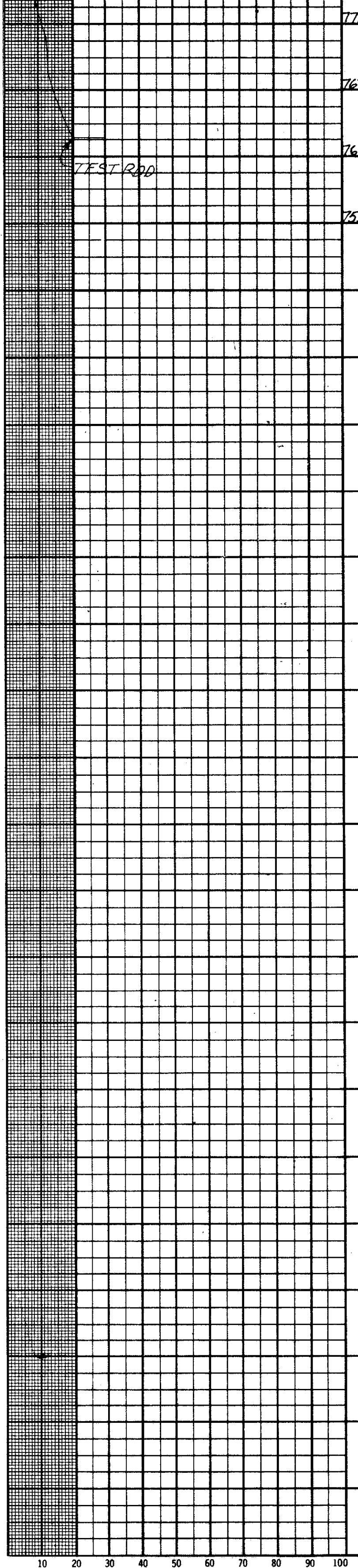
Test Location No. 4  
Station & Offset 207+42.56 RT  
REAR PIER  
Surface Elev. 778.1 Water Elev. DRY-Hole Open

Piling \_\_\_\_\_  
Hammer \_\_\_\_\_  
Formula \_\_\_\_\_  
Reference \_\_\_\_\_  
Rod Condition GOOD



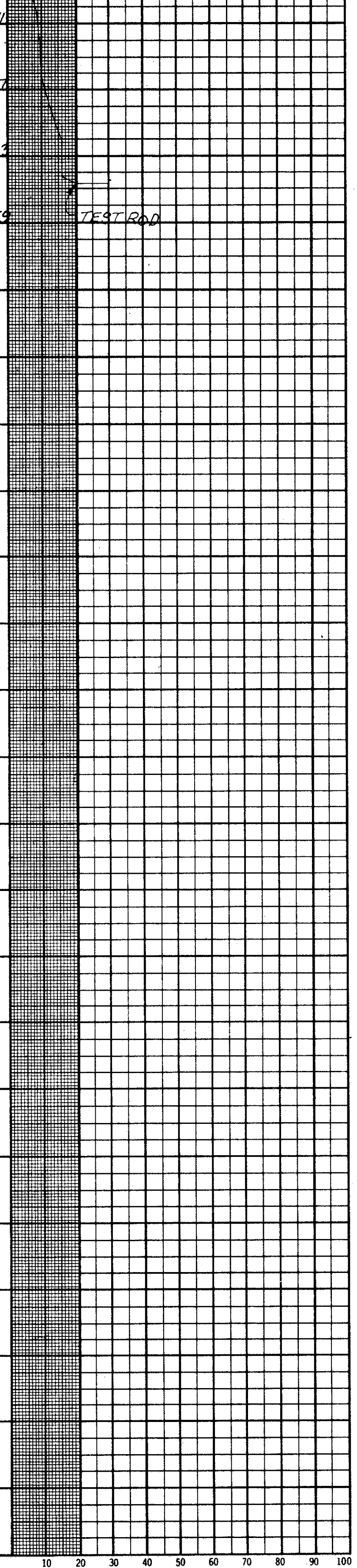
Test Location No. 6  
Station & Offset 207+77.56 LT  
REAR PIER  
Surface Elev. 778.1 Water Elev. DRY-Hole Open

Piling \_\_\_\_\_  
Hammer \_\_\_\_\_  
Formula \_\_\_\_\_  
Reference \_\_\_\_\_  
Rod Condition GOOD



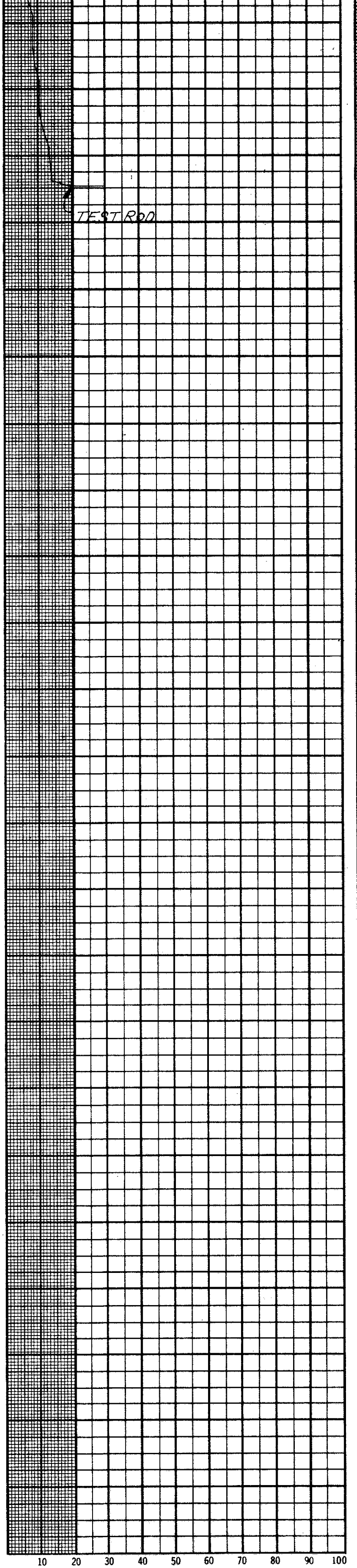
Test Location No. 7  
Station & Offset 207+92.56 RT  
FORWARD PIER  
Surface Elev. 777.7 Water Elev. DRY-Hole Open

Piling \_\_\_\_\_  
Hammer \_\_\_\_\_  
Formula \_\_\_\_\_  
Reference \_\_\_\_\_  
Rod Condition GOOD



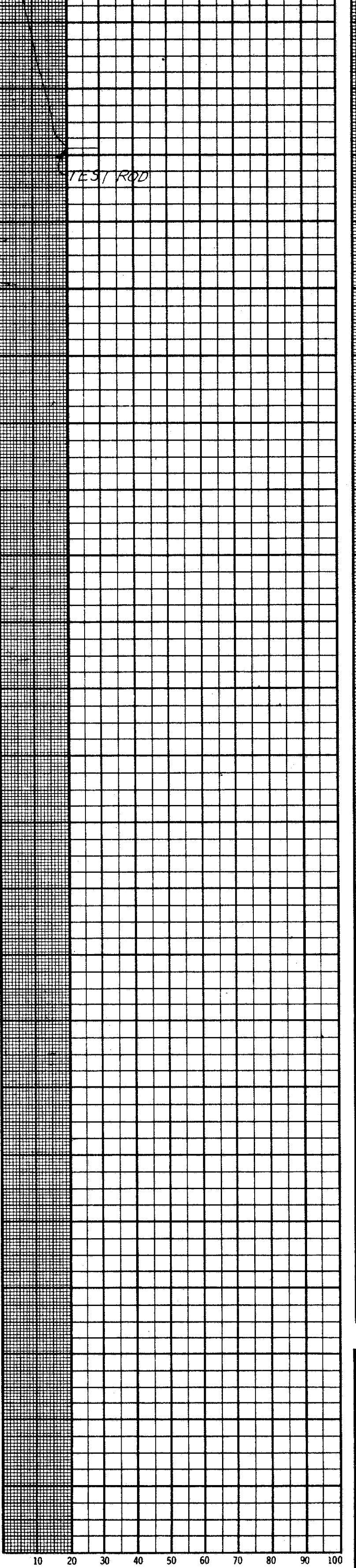
Test Location No. 9  
Station & Offset 208+27.55 LT  
FORWARD PIER  
Surface Elev. 777.5 Water Elev. DRY-Hole Open

Piling \_\_\_\_\_  
Hammer \_\_\_\_\_  
Formula \_\_\_\_\_  
Reference \_\_\_\_\_  
Rod Condition GOOD



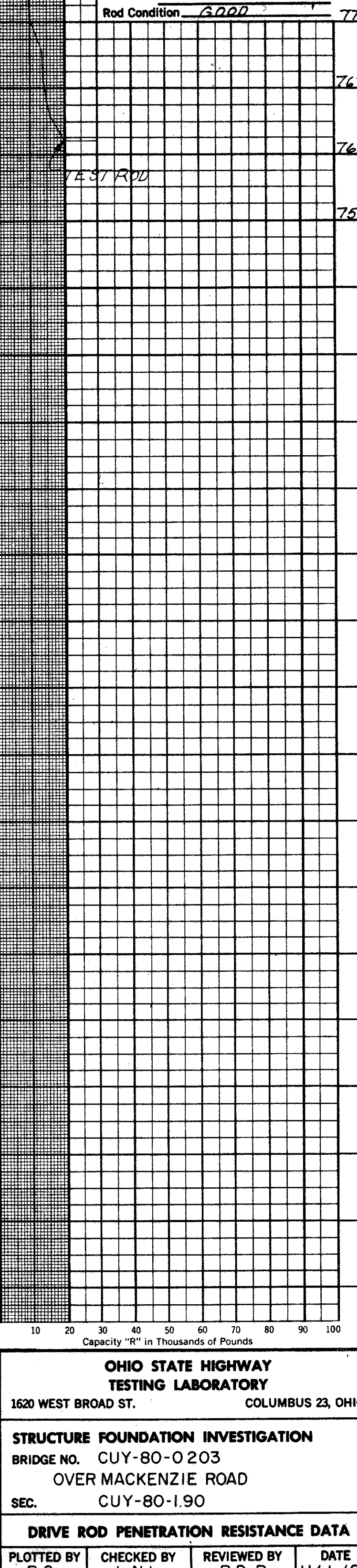
Test Location No. 10  
Station & Offset 208+30.61 RT  
FORWARD ABUTMENT  
Surface Elev. 778.2 Water Elev. DRY-Hole Open

Piling \_\_\_\_\_  
Hammer \_\_\_\_\_  
Formula \_\_\_\_\_  
Reference \_\_\_\_\_  
Rod Condition GOOD



Test Location No. 12  
Station & Offset 208+69.61 LT  
FORWARD ABUTMENT  
Surface Elev. 777.3 Water Elev. DRY-Hole Open

Piling \_\_\_\_\_  
Hammer \_\_\_\_\_  
Formula \_\_\_\_\_  
Reference \_\_\_\_\_  
Rod Condition GOOD



13  
25  
3  
3

**OHIO STATE HIGHWAY TESTING LABORATORY**  
1620 WEST BROAD ST. COLUMBUS 23, OHIO

**STRUCTURE FOUNDATION INVESTIGATION**  
BRIDGE NO. CUY-80-0203  
OVER MACKENZIE ROAD  
SEC. CUY-80-1.90

**DRIVE ROD PENETRATION RESISTANCE DATA**

PLOTTED BY R.C.	CHECKED BY L.N.L.	REVIEWED BY R.D.R.	DATE 11/1/68
--------------------	----------------------	-----------------------	-----------------