

EDWARD C. SHIMANDLE
&
SOPHIE R. SHIMANDLE

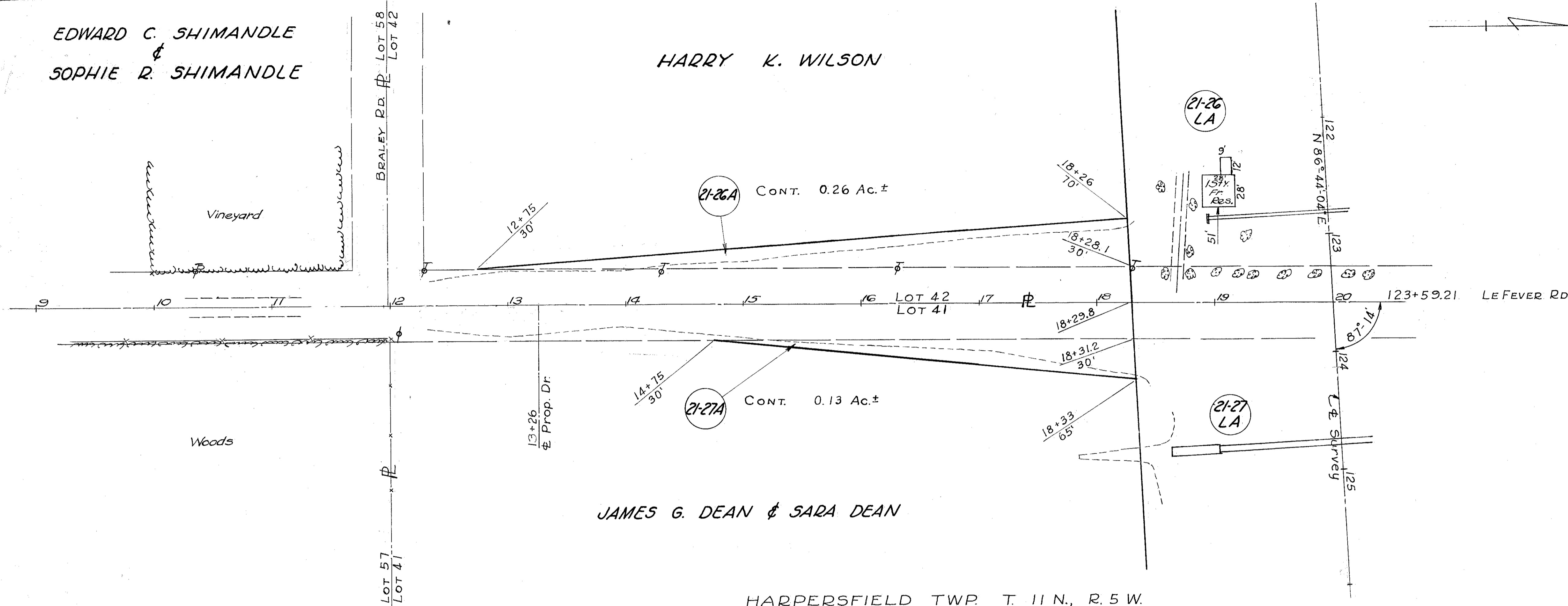
HARRY K. WILSON

FED. RD. DIVISION	STATE	PROJECT
2	OHIO	I-1103(15)

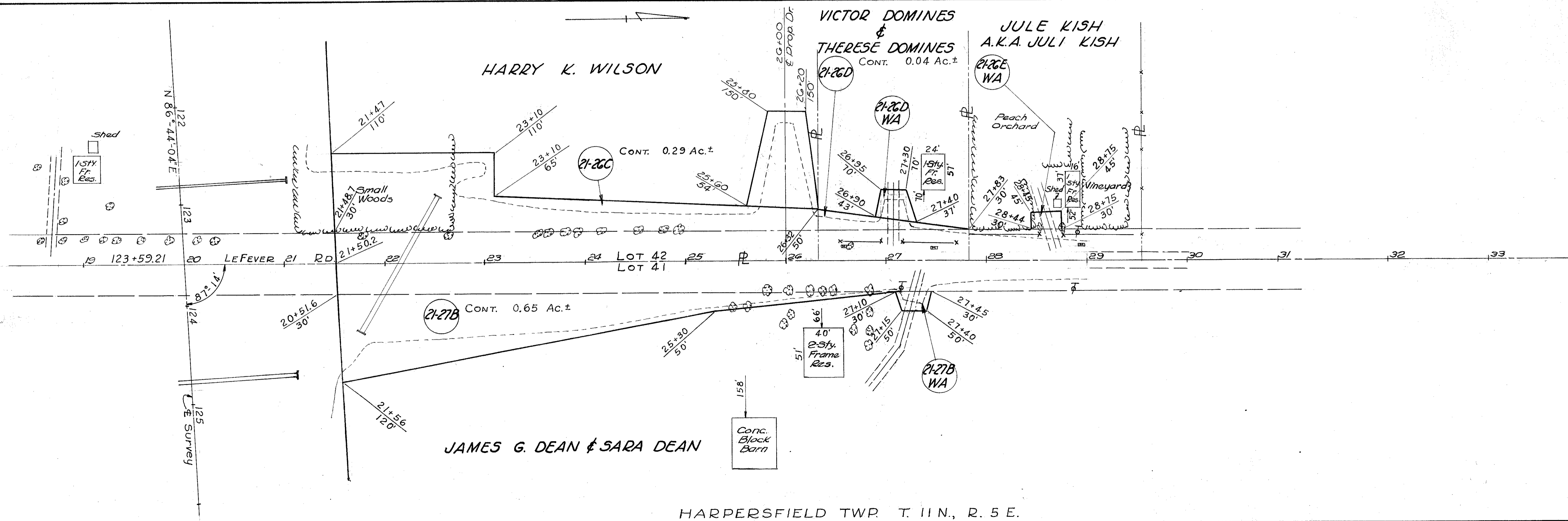
176
176

LAK. 1 - 26.51
ATB. 1 - 0.00
R/W PLANS
LIMITED ACCESS

14



HARPERSFIELD TWP. T. 11 N., R. 5 W.



HARPERSFIELD TWP. T. 11 N., R. 5 E.

LE FEVER RD.