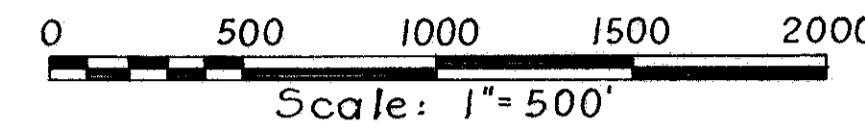


# LOCATION PLAN

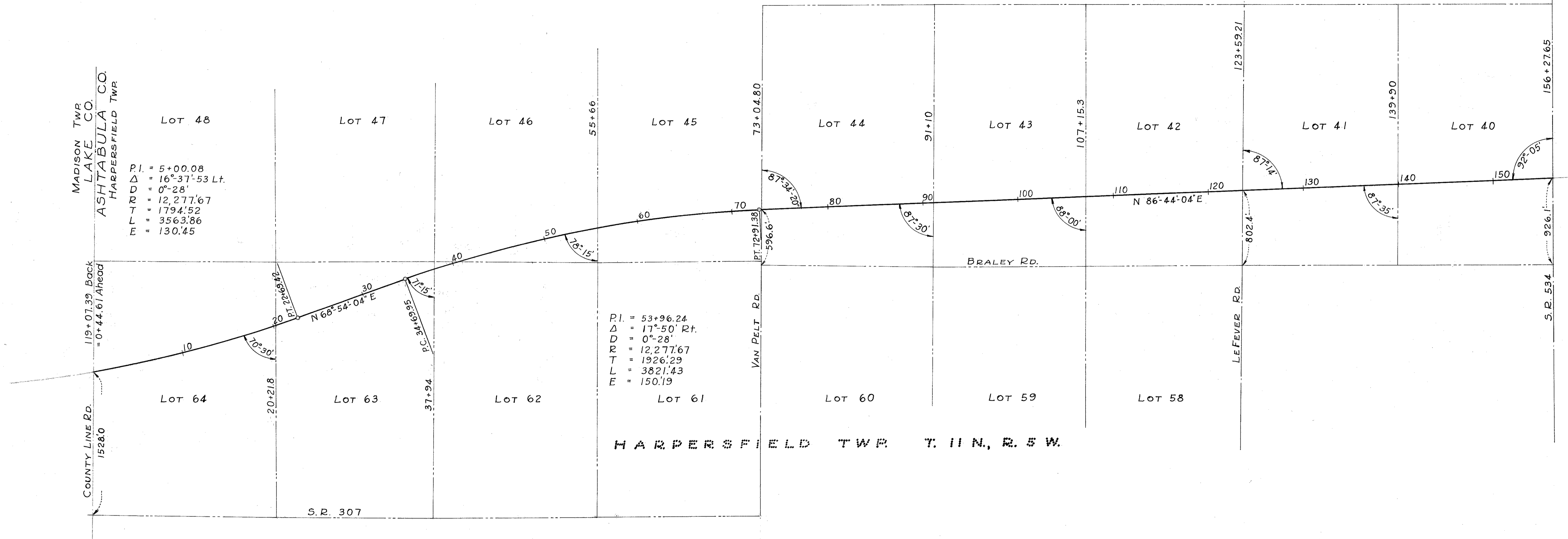
S. R. 1                      LAK 1 -26.51  
S. R. 1                      ATB 1 -0.00  
ASHTABULA COUNTY



## LIMITED ACCESS

Received \_\_\_\_\_ at \_\_\_\_\_  
 Recorded \_\_\_\_\_  
 Plat Book \_\_\_\_\_ Page \_\_\_\_\_  
 Signed \_\_\_\_\_ Recorder, Ashtabula County, Ohio  
 Fee \_\_\_\_\_

Signed John Russell  
 Right of Way Engineer - Interstate Projects  
 Date 7/18/57 Registered Surveyor No. 104  
 Signed Valden J. Farnham  
 Charles L. Barber & Assoc. Engrs. & Architects  
 Date 3-10-57 Registered Surveyor No. 4862



### CENTERLINE REFERENCE MONUMENTS

—○—	—○—	—○—	—○—									
STA. 105+00	STA. 115+00	STA. 125+00	STA. 135+00									
—○—	—○—	—○—	—○—	—○—	—○—	—○—	—○—	—○—	—○—	—○—	—○—	
STA. 5+00	STA. 15+00	P.T. STA. 22+69.42	STA. 28+00	P.C. STA. 34+69.95	STA. 44+00	STA. 54+00	STA. 60+00	STA. 65+00	P.T. STA. 72+91.38	STA. 80+00	STA. 90+00	STA. 99+00

Centerline reference monuments are to be set at the locations shown after completion of construction.