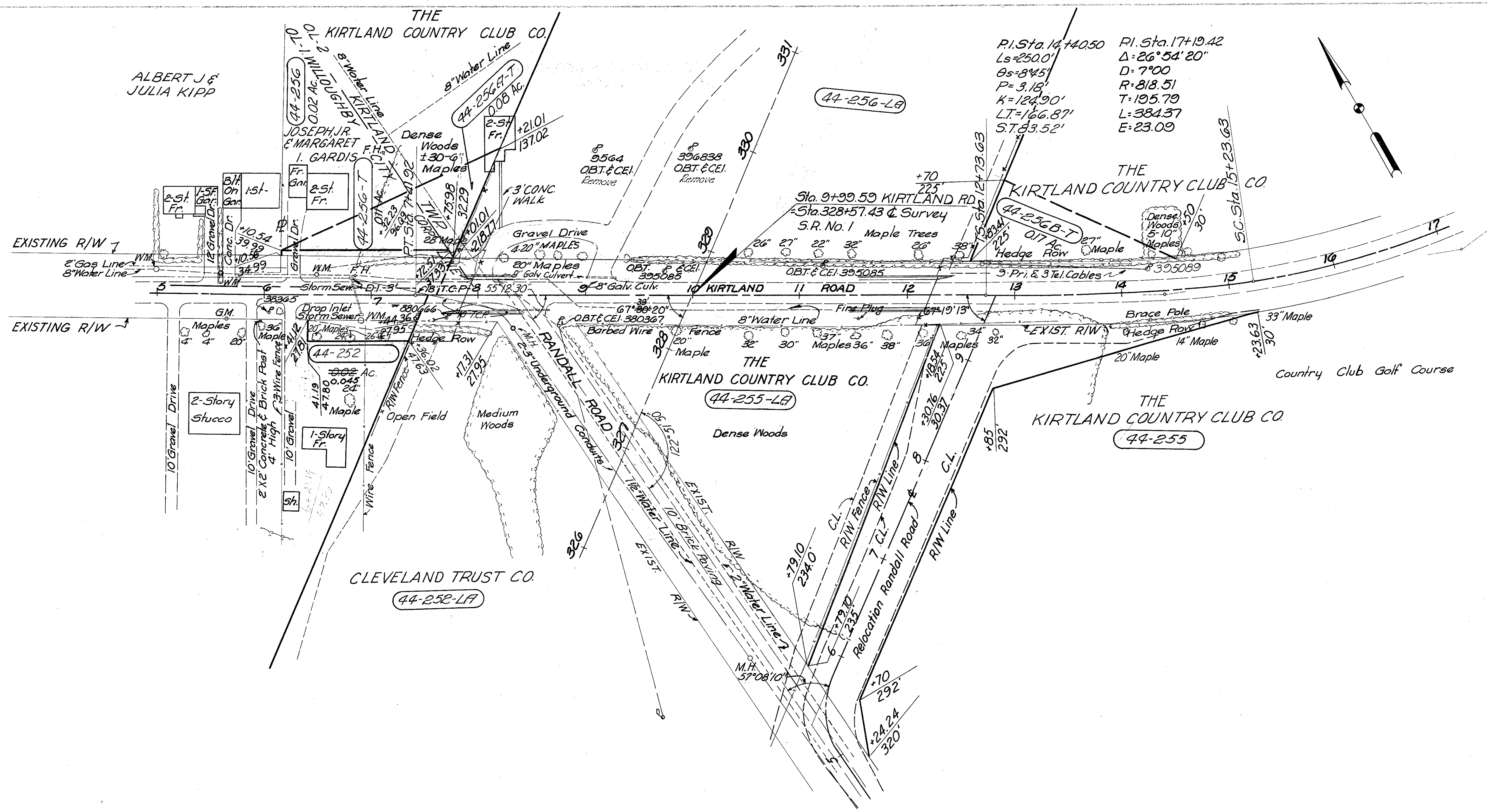
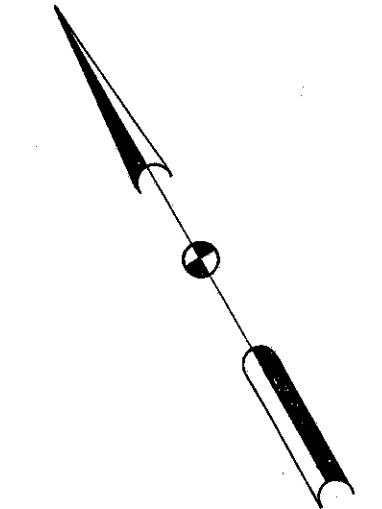


LAKE COUNTY
LAK-1-4.02
LIMITED ACCESS
R/W
18 of 22



P.I. Sta. 14+40.50
 Ls=250.0'
 θs=84.5'
 P=3.18
 K=124.90'
 LT=166.87'
 ST. 83.52'
 P.I. Sta. 17+19.42
 Δ=26°54'20"
 D=7°00'
 R=818.51
 T=195.79
 L=384.37
 E=23.09

MICHAEL BAKER, JR., CONSULTING ENGINEERS ROCHESTER, PENNSYLVANIA					
DATE: 3-23-59 10-8-59					
STATE OF OHIO DEPARTMENT OF HIGHWAYS RIGHT OF WAY PLANS STATE HIGHWAY NO. 1 C-44 KIRTLAND ROAD					
Designed	Drawn	Traced	Checked	Reviewed Date	Revised
J.S.	R.P.	K.A.	J.P.		