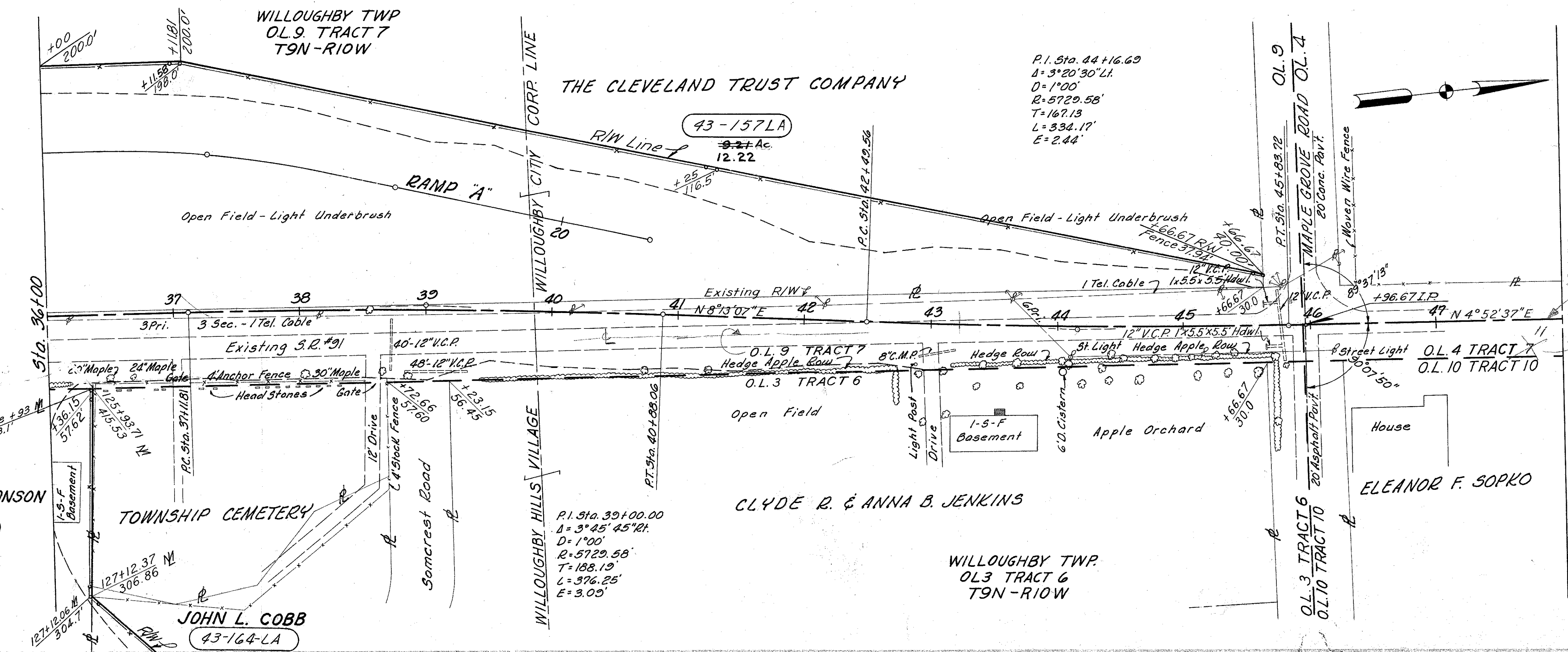
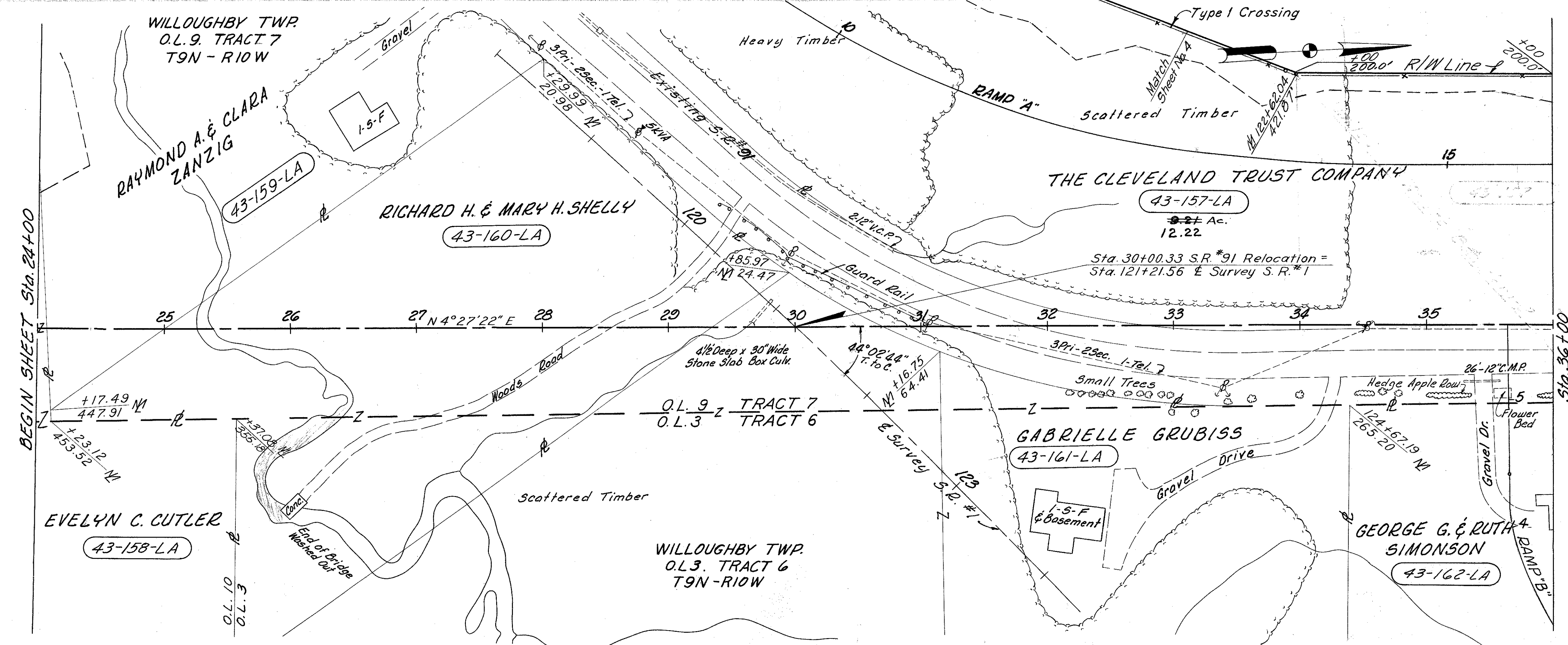


LAKE COUNTY  
LAK-1-2.16  
LIMITED ACCESS

R/W  
15 of 17



1283 L.F. Type "D" Fence

MICHAEL BAKER JR., CONSULTING ENGINEERS  
ROCHESTER, PENNSYLVANIA

DATE:  
3-25-59  
10-26-59

STATE OF OHIO  
DEPARTMENT OF HIGHWAYS  
RIGHT OF WAY PLANS  
STATE HIGHWAY NO. 1  
C-43

S.R. NO. 91 STA. 24+00 TO STA. 48+00

Designed	Drawn	Traced	Checked	Reviewed Date	Revised
J.R.	A.L.H.	K.A.	B.P.		

GEORGE G. & RUTH SIMONSON  
43-162-LA

TOWNSHIP CEMETERY  
JOHN L. COBB  
43-164-LA

CLYDE R. & ANNA B. JENKINS  
WILLOUGHBY TWP.  
O.L. 3 TRACT 6  
T9N-R10W

ELEANOR F. SOPKO

P.I. Sta. 44+16.69  
Δ = 3°20'30" L.I.  
D = 1'00'  
R = 5729.58'  
T = 167.13'  
L = 334.17'  
E = 2.44'

P.I. Sta. 39+00.00  
Δ = 3°45'45" R.I.  
D = 1'00'  
R = 5729.58'  
T = 188.19'  
L = 376.25'  
E = 3.03'