

Lake County Perry Twp.
T-11-N R-7-W
Lot 21

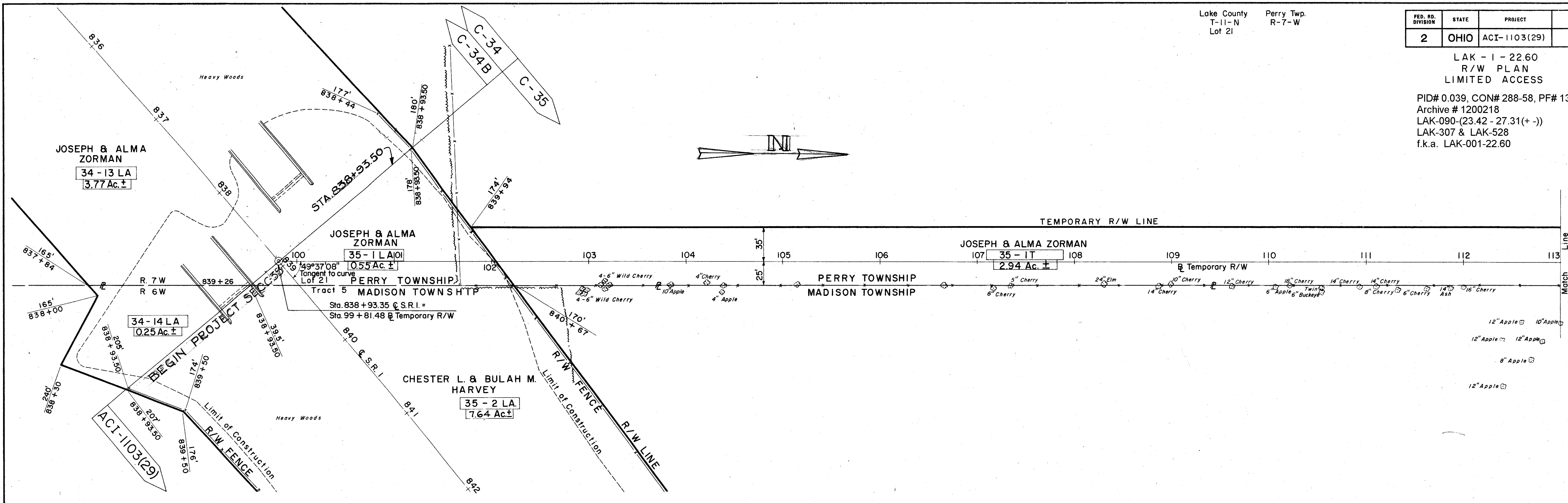
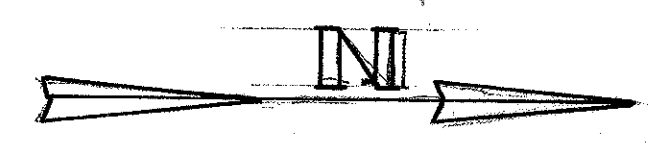
FED. RD. DIVISION	STATE	PROJECT
2	OHIO	ACI-1103(29)

280
280

LAK - I - 22.60
R/W PLAN
LIMITED ACCESS

14
14

PID# 0.039, CON# 288-58, PF# 130R
Archive # 1200218
LAK-090-(23.42 - 27.31(+ -))
LAK-307 & LAK-528
f.k.a. LAK-001-22.60



Lake County Perry Twp.
T-11-N R-7-W
Lot 31

