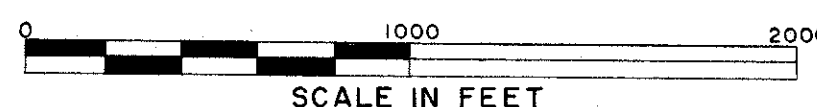
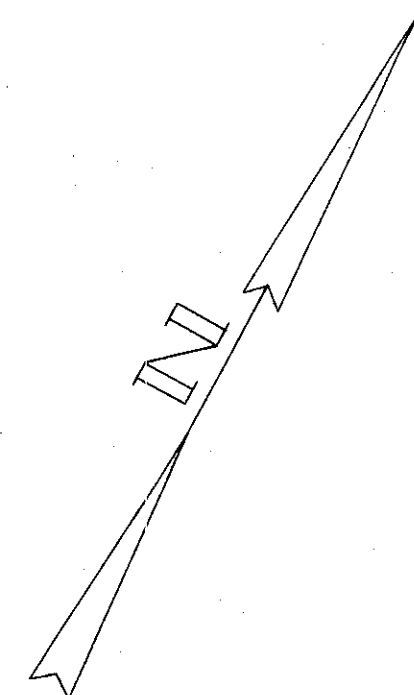


LOCATION PLAN

LAK-1-22.60

PERRY & MADISON TOWNSHIPS & VILLAGE OF MADISON LAKE COUNTY



Received _____ Time _____
 Recorded _____
 Plat Book M Pages 47 and 47-1
 Signed _____ Recorder, Lake County, Ohio
 Fee _____ Paid _____

267
280

1
14

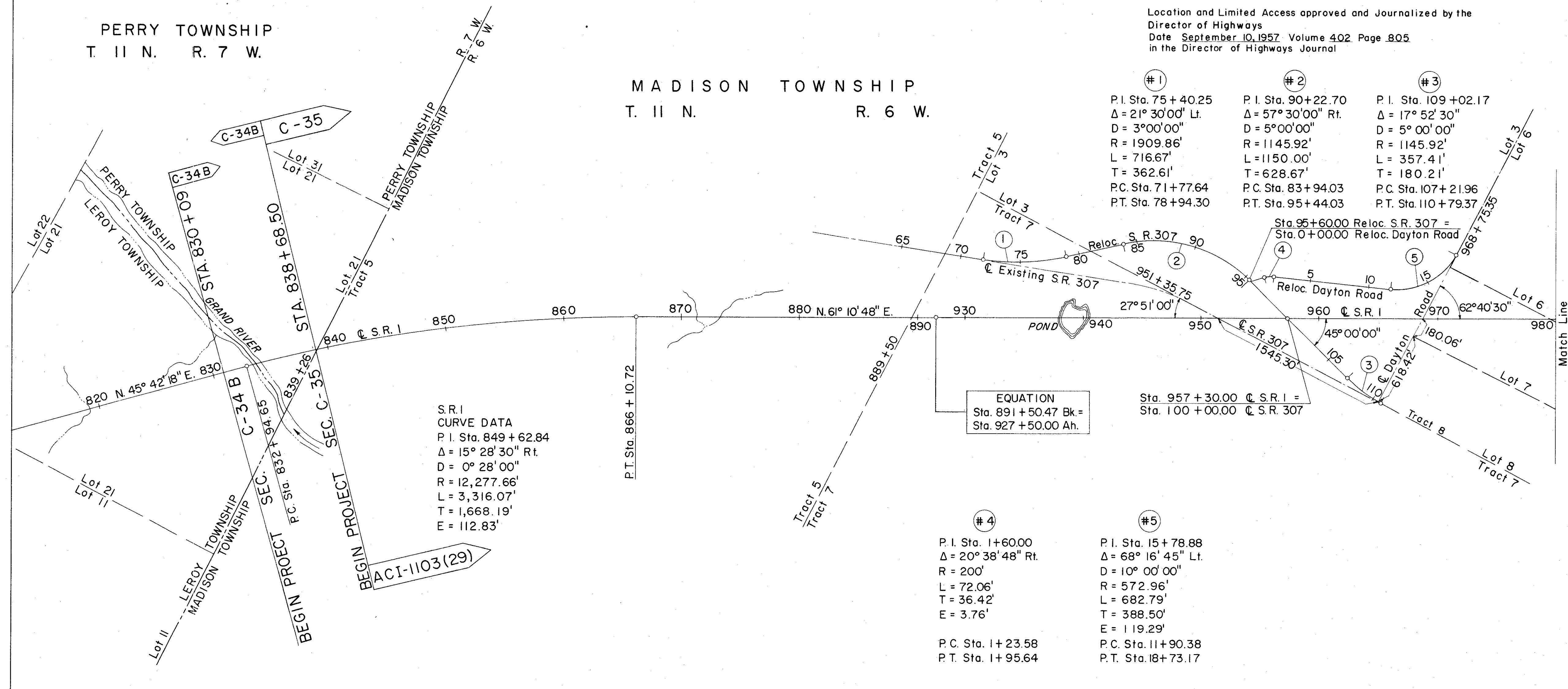
Signed _____
 Right-of-Way Engineer, Interstate Projects

Date _____

Signed Robert E. Smith
 Robert E. Smith P.E. No. 18042
 Partner - Capitol Engineering Associates

Date _____

Location and Limited Access approved and Journalized by the
 Director of Highways
 Date September 10, 1957 Volume 402 Page 805
 in the Director of Highways Journal



S.R. 1
 CURVE DATA
 P. I. Sta. 849 + 62.84
 $\Delta = 15^\circ 28' 30''$ Rt.
 $D = 0^\circ 28' 00''$
 $R = 12,277.66'$
 $L = 3,316.07'$
 $T = 1,668.19'$
 $E = 112.83'$

EQUATION
 Sta. 891 + 50.47 Bk. =
 Sta. 927 + 50.00 Ah.

#1 P. I. Sta. 75 + 40.25 $\Delta = 21^\circ 30' 00''$ Lt. $D = 3^\circ 00' 00''$ $R = 1909.86'$ $L = 716.67'$ $T = 362.61'$ P.C. Sta. 71 + 77.64 P.T. Sta. 78 + 94.30	#2 P. I. Sta. 90 + 22.70 $\Delta = 57^\circ 30' 00''$ Rt. $D = 5^\circ 00' 00''$ $R = 1145.92'$ $L = 1150.00'$ $T = 628.67'$ P.C. Sta. 83 + 94.03 P.T. Sta. 95 + 44.03	#3 P. I. Sta. 109 + 02.17 $\Delta = 17^\circ 52' 30''$ $D = 5^\circ 00' 00''$ $R = 1145.92'$ $L = 357.41'$ $T = 180.21'$ P.C. Sta. 107 + 21.96 P.T. Sta. 110 + 79.37
---	--	--

#4
 P. I. Sta. 1 + 60.00
 $\Delta = 20^\circ 38' 48''$ Rt.
 $R = 200'$
 $L = 72.06'$
 $T = 36.42'$
 $E = 3.76'$
 P.C. Sta. 1 + 23.58
 P.T. Sta. 1 + 95.64

#5
 P. I. Sta. 15 + 78.88
 $\Delta = 68^\circ 16' 45''$ Lt.
 $D = 10^\circ 00' 00''$
 $R = 572.96'$
 $L = 682.79'$
 $T = 388.50'$
 $E = 119.29'$
 P.C. Sta. 11 + 90.38
 P.T. Sta. 18 + 73.17