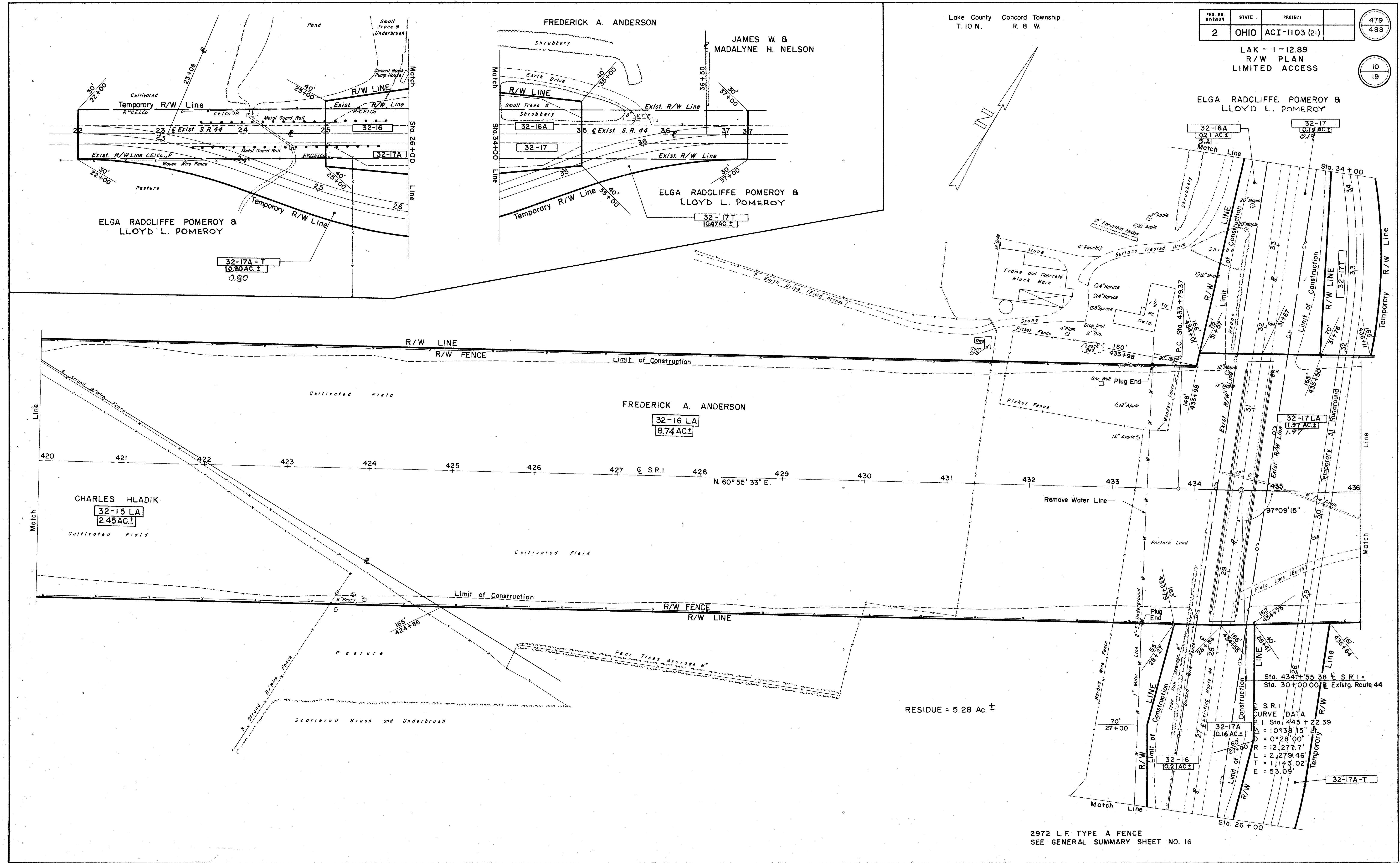


FED. RD. DIVISION	STATE	PROJECT	479
2	OHIO	ACI-1103 (21)	488

LAK-1-12.89  
R/W PLAN  
LIMITED ACCESS

ELGA RADCLIFFE POMEROY &  
LLOYD L. POMEROY

Lake County Concord Township  
T. 10 N. R. 8 W.



RESIDUE = 5.28 Ac. ±

2972 L.F. TYPE A FENCE  
SEE GENERAL SUMMARY SHEET NO. 16